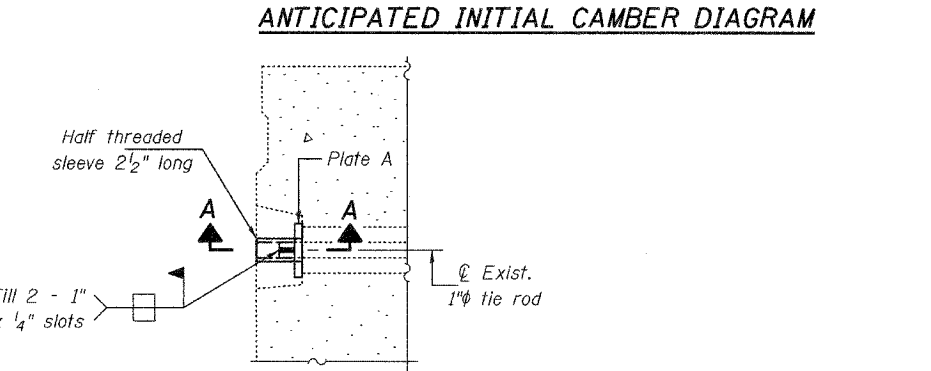
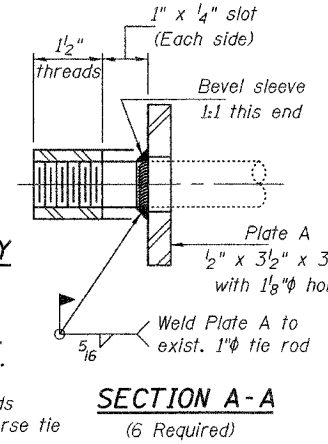
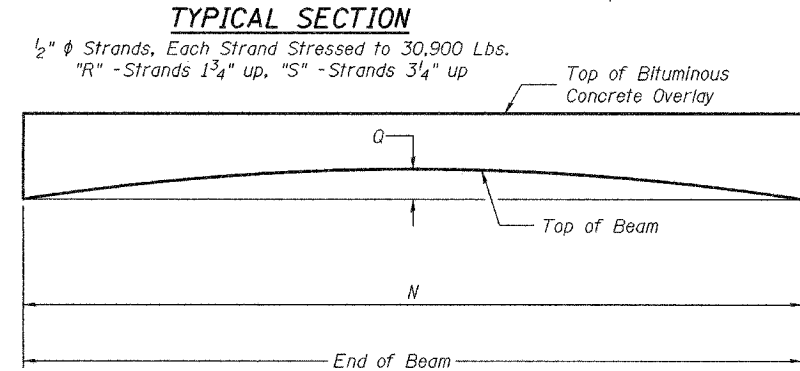
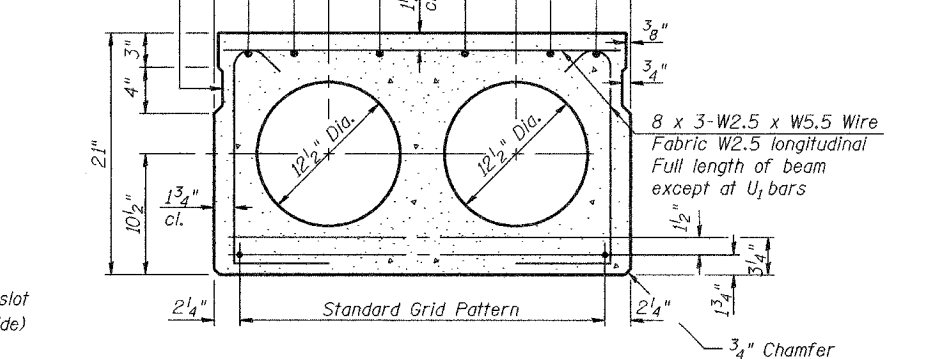
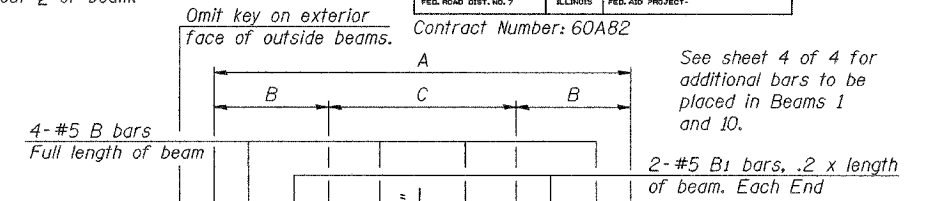


STATE OF ILLINOIS
DEPARTMENT OF TRANSPORTATION

Note:
Place strands symmetrically
about \bar{C} of beam.

ROUTE NO.	SECTION	COUNTY	SHEET NO.	SHEET NO.
		Cook	12	5
Contract Number: 60A82				
4 SHEETS				

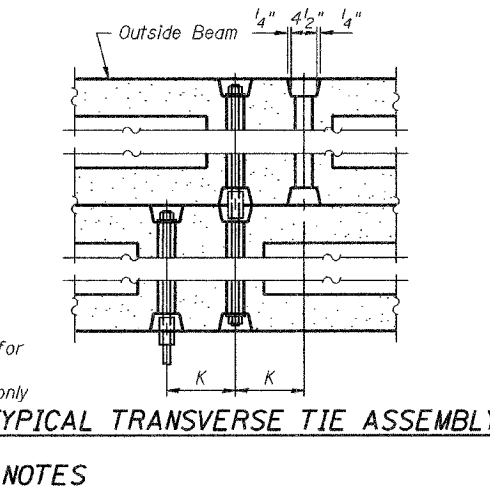
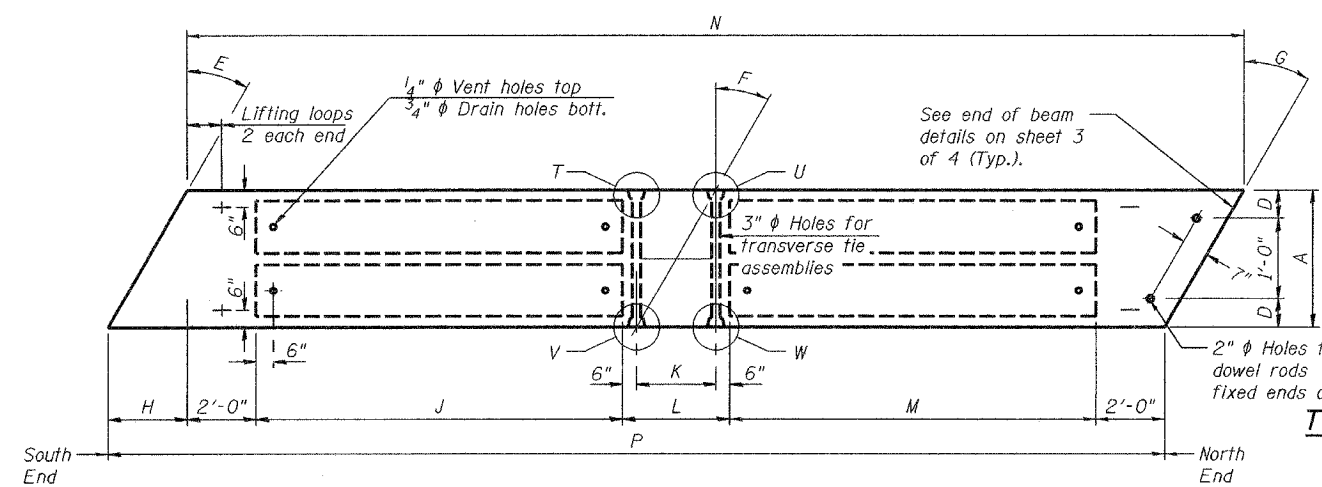
Span	Beam	Beam Width Dimensions				Skew Angle			Beam Length Dimensions								Camber	# of Strands			Tie Rod Detail			
		A	B	C	D	E	F	G	H	J	K	L	M	N	P	Q		R	S	T	U	V	W	
4	1	36"	10 1/4"	15 1/2"	1'-0"	24°-0'	29°-57'	35°-16'	1'-4"	14'-6 3/4"	1'-8 3/4"	2'-8 3/4"	14'-6 3/4"	37'-11 1/2"	37'-2 1/8"	3/8"	8	0	E	-	B	-		
4	9	36"	10 1/4"	15 1/2"	1'-0"	24°-0'	29°-57'	35°-16'	1'-4"	11'-4 7/8"	1'-8 3/4"	2'-8 3/4"	11'-5"	31'-8 8/8"	30'-10 5/8"	1/4"	8	0	A	B	C	D		
4	10	35"	10"	15"	11 1/2"	24°-0'	29°-57'	35°-16'	1'-4"	11'-0 1/4"	1'-8 3/4"	2'-8 3/4"	11'-0 1/4"	30'-10 3/8"	30'-1 1/4"	1/4"	8	0	D	C	B	A		
5	1	36"	10 1/4"	15 1/2"	1'-0"	35°-16'	35°-16'	35°-16'	2'-1 1/2"	18'-3 3/8"	2'-1 1/2"	3'-1 1/2"	18'-3 1/2"	45'-9 7/8"	45'-9 7/8"	1"	4	8	E	-	B	-		
6	1	36"	10 1/4"	15 1/2"	1'-0"	35°-16'	35°-16'	35°-16'	2'-1 1/2"	16'-0 3/8"	2'-1 1/2"	3'-1 1/2"	16'-0 1/2"	41'-3 7/8"	41'-3 7/8"	3/4"	6	4	E	-	C	-		
6	2	36"	10 1/4"	15 1/2"	1'-0"	35°-16'	35°-16'	35°-16'	2'-1 1/2"	16'-0 3/8"	2'-1 1/2"	3'-1 1/2"	16'-0 1/2"	41'-3 7/8"	41'-3 7/8"	3/4"	6	4	D	C	B	A		
7	1	36"	10 1/4"	15 1/2"	1'-0"	35°-16'	35°-16'	35°-16'	2'-1 1/2"	16'-1 5/8"	2'-1 1/2"	3'-1 1/2"	16'-1 5/8"	41'-6 1/4"	41'-6 1/4"	3/4"	6	4	E	-	B	-		



BILL OF MATERIAL

Bar	No.	Size	Length	Shape
a(E)	18	#5	3'-6"	
a1(E)	12	#5	7'-2"	
Precast Prestressed Conc. Deck Bms.		Sq. Ft.	808	
Reinforcing Bars, Epoxy Coated		Pound	160	

BEAM DETAILS
NORTH BOUND LANES
PULASKI ROAD / BRC R.R.
COOK COUNTY
SN 016-1020



NOTES

Prestressing steel shall be uncoated high strength, low relaxation 7-wire strand, Grade 270. The nominal diameter shall be 1/2" and the nominal cross-sectional area shall be 0.153 sq. in. Lifting loops shall be 2-1/2" ϕ -270 ksi strands, as shown.

The 1" ϕ rods in the transverse tie assembly shall be tightened to a snug fit and the threads set. Pockets that receive transverse tie bar on outside shall be filled with grout after transverse tie assembly is in place.

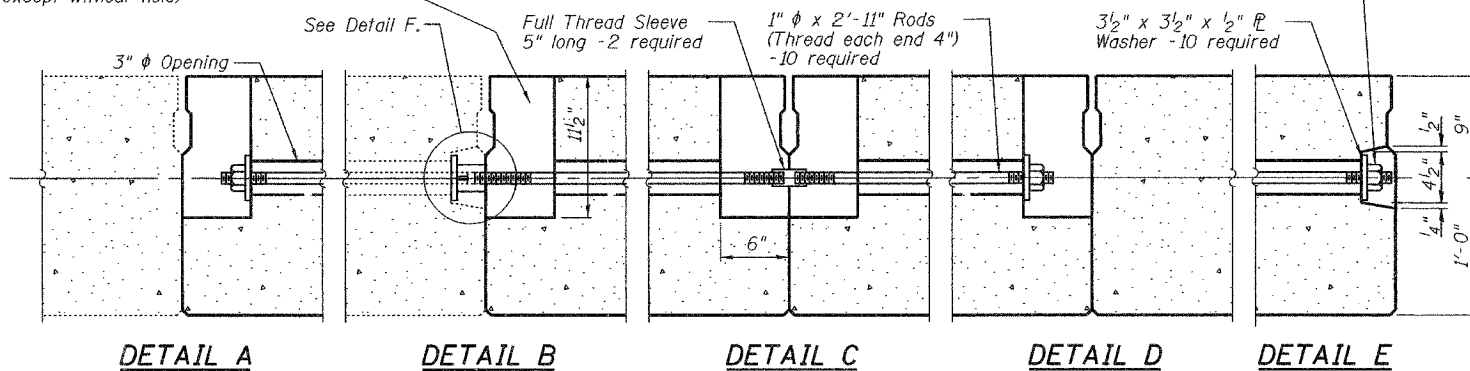
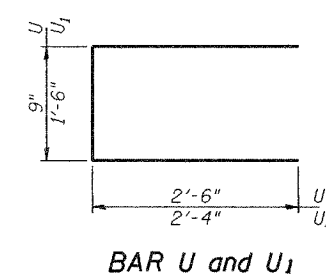
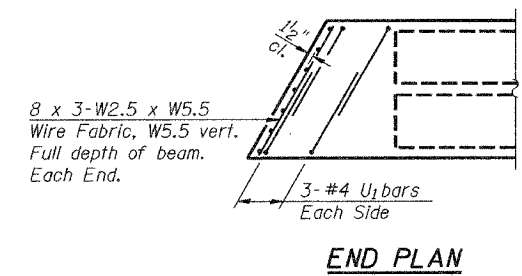
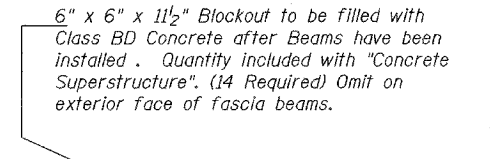
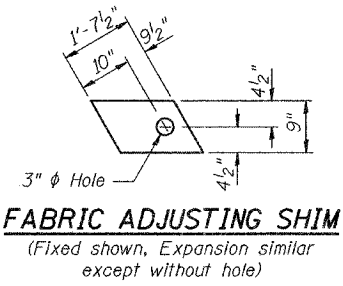
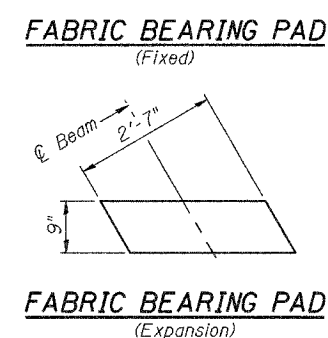
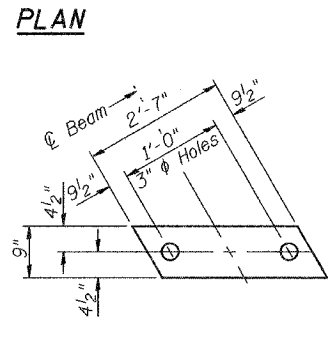
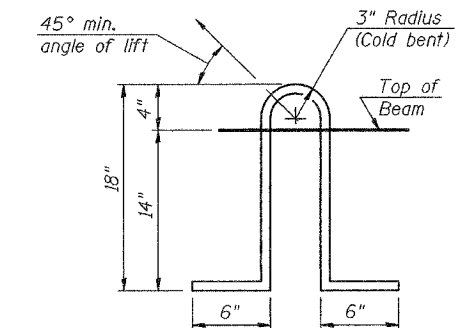
Non prestressing steel shall conform to AASHTO M31 or M322 Grade 60.

The bearing seat surfaces shall be adjusted by shimming to assure firm and even bearing. Two 1/8" fabric adjusting shims of the dimensions shown shall be provided for each bearing.

Keyway surfaces shall be cleaned to remove form oil or other bond breaking material prior to shipment of the beams. Cleaning shall be done by sandblasting the keyway areas between top of the beam and the bottom edge of the key.

Corrosion inhibitor, as covered in the Special Provisions, shall be used in the concrete for precast prestressed concrete deck beams.

Required Release Strength, f'ci, shall be 4000 p.s.i.



DESIGNED V.H.V.
CHECKED S.J.B.
DRAWN Drew Christopher
CHECKED V.H.V. S.J.B.
PD-3-L

November 16, 2005
EXAMINED John A. Morris
ENGINEER OF STRUCTURAL SERVICES
PASSED Ralph E. Anderson
ENGINEER OF BRIDGES AND STRUCTURES
10-22-04