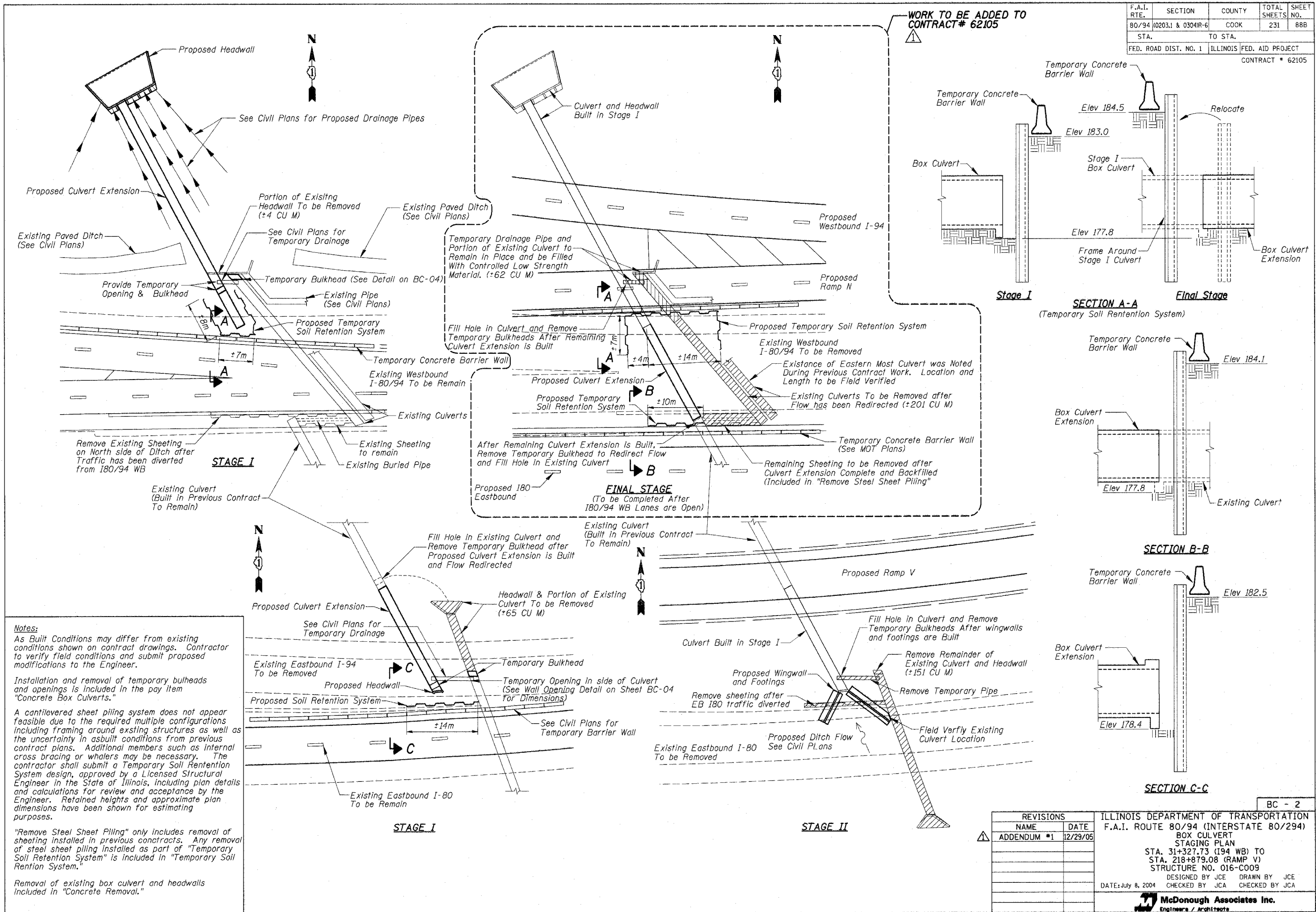
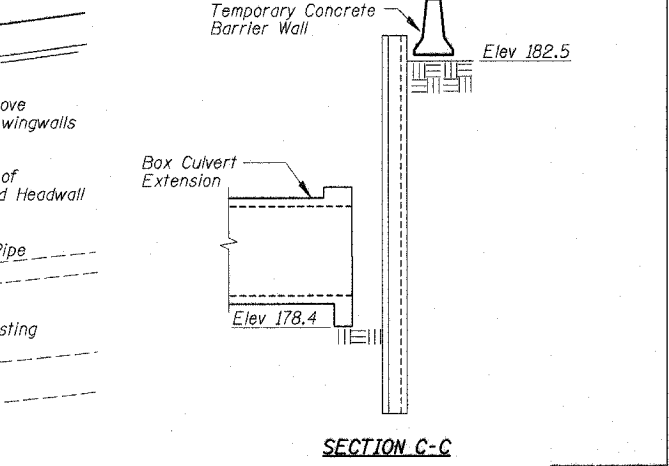
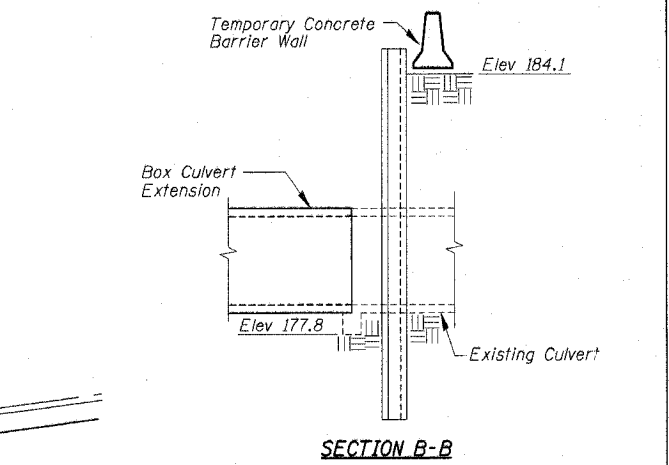
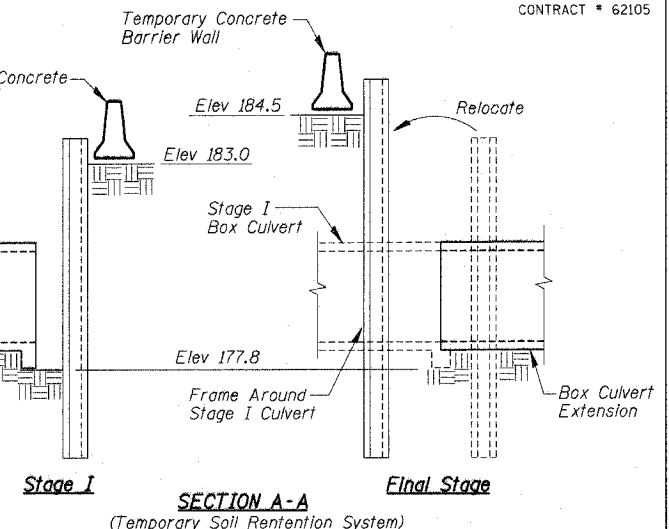


F.A.I. RTE.	SECTION	COUNTY	TOTAL SHEETS	SHEET NO.
80/94	(0203.1 & 0304R-6)	COOK	231	88B
STA.	TO STA.			
FED. ROAD DIST. NO. 1	ILLINOIS FED. AID PROJECT		CONTRACT # 62105	



WORK TO BE ADDED TO CONTRACT # 62105



Notes:
 As Built Conditions may differ from existing conditions shown on contract drawings. Contractor to verify field conditions and submit proposed modifications to the Engineer.
 Installation and removal of temporary bulheads and openings is included in the pay item "Concrete Box Culverts."
 A cantilevered sheet piling system does not appear feasible due to the required multiple configurations including framing around existing structures as well as the uncertainty in asbuilt conditions from previous contract plans. Additional members such as internal cross bracing or walers may be necessary. The contractor shall submit a Temporary Soil Retention System design, approved by a Licensed Structural Engineer in the State of Illinois, including plan details and calculations for review and acceptance by the Engineer. Retained heights and approximate plan dimensions have been shown for estimating purposes.
 "Remove Steel Sheet Piling" only includes removal of sheeting installed in previous contracts. Any removal of steel sheet piling installed as part of "Temporary Soil Retention System" is included in "Temporary Soil Retention System."
 Removal of existing box culvert and headwalls included in "Concrete Removal."

REVISIONS		ILLINOIS DEPARTMENT OF TRANSPORTATION F.A.I. ROUTE 80/94 (INTERSTATE 80/294) BOX CULVERT STAGING PLAN STA. 31+327.73 (194 WB) TO STA. 218+879.08 (RAMP V) STRUCTURE NO. 016-C009 DESIGNED BY JCE DRAWN BY JCE DATE: July 8, 2004 CHECKED BY JCA CHECKED BY JCA
NAME	DATE	
ADDENDUM #1	12/29/05	

BC - 2

McDonough Associates Inc.
Engineers / Architects