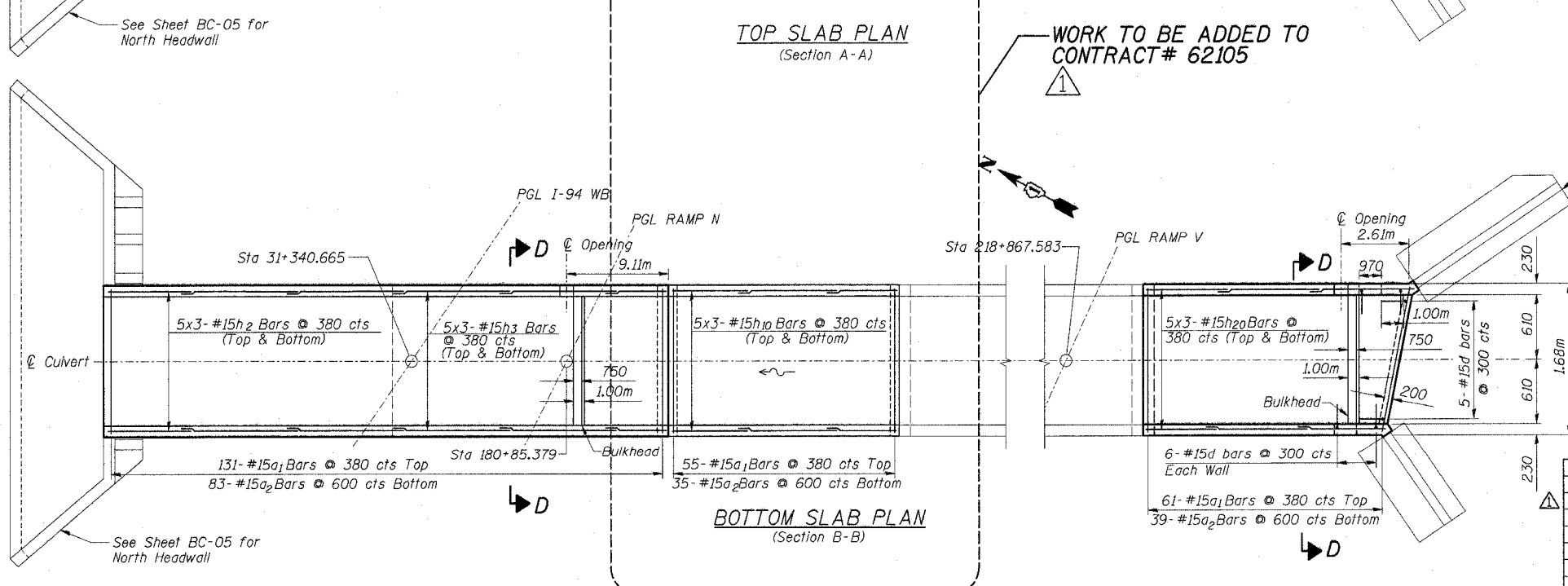
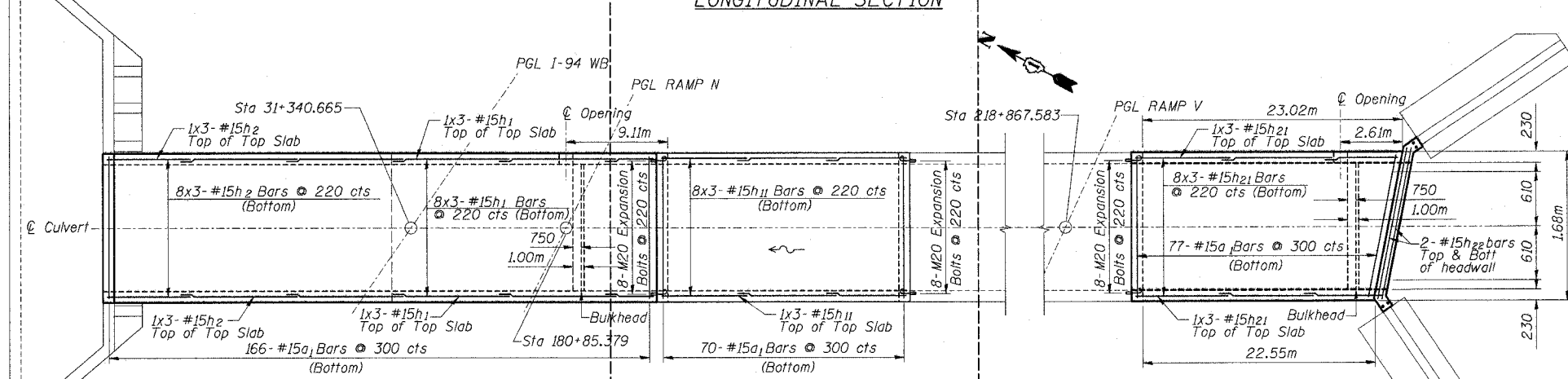
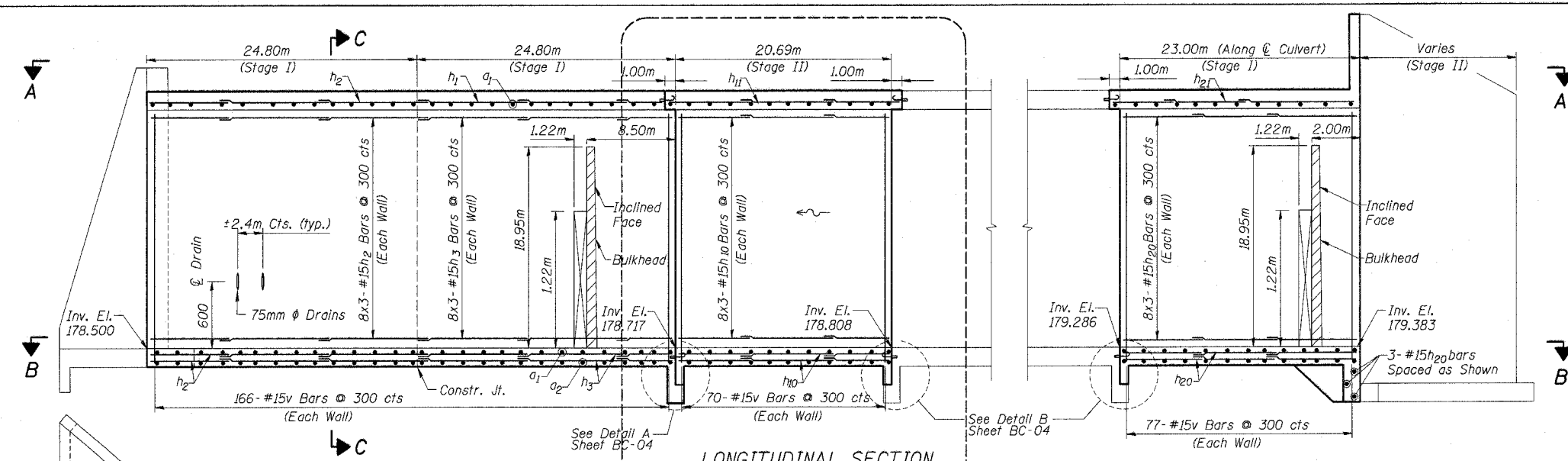


F.A.I. RTE.	SECTION	COUNTY	TOTAL SHEETS	SHEET NO.
80/94	0203.1 & 0304R-6	COOK	231	88C
STA.	TO STA.			
FED. ROAD DIST. NO. 1	ILLINOIS	FED. AID PROJECT		
CONTRACT # 62105				



**WORK TO BE ADDED TO CONTRACT # 62105**

- NOTES:**
1. Temporary openings on the east side of culvert shall be closed after Stage II work is complete. See Detail on BC-04.
  2. The purpose of the Bulkheads is to block the flow in culvert at ends to facilitate construction of the Stage II culvert extensions. The bulkhead shall be included for payment with "Concrete Box Culvert". These walls shall be removed after Stage II extensions are in place.
  3. For Sections C-C & D-D, see sheet BC-04.

REVISIONS		ILLINOIS DEPARTMENT OF TRANSPORTATION F.A.I. ROUTE 80/94 (INTERSTATE 80/294) BOX CULVERT PLAN & SECTIONS - BARREL STA. 31+327.73 (I94 WB) TO STA. 218+879.08 (RAMP V) STRUCTURE NO. 016-C009
NAME	DATE	
ADDENDUM #1	12/29/05	DESIGNED BY JCE DRAWN BY JCE DATE: July 8, 2004 CHECKED BY JCA CHECKED BY JCA

BC - 3

**McDonough Associates Inc.**  
Engineers / Architects