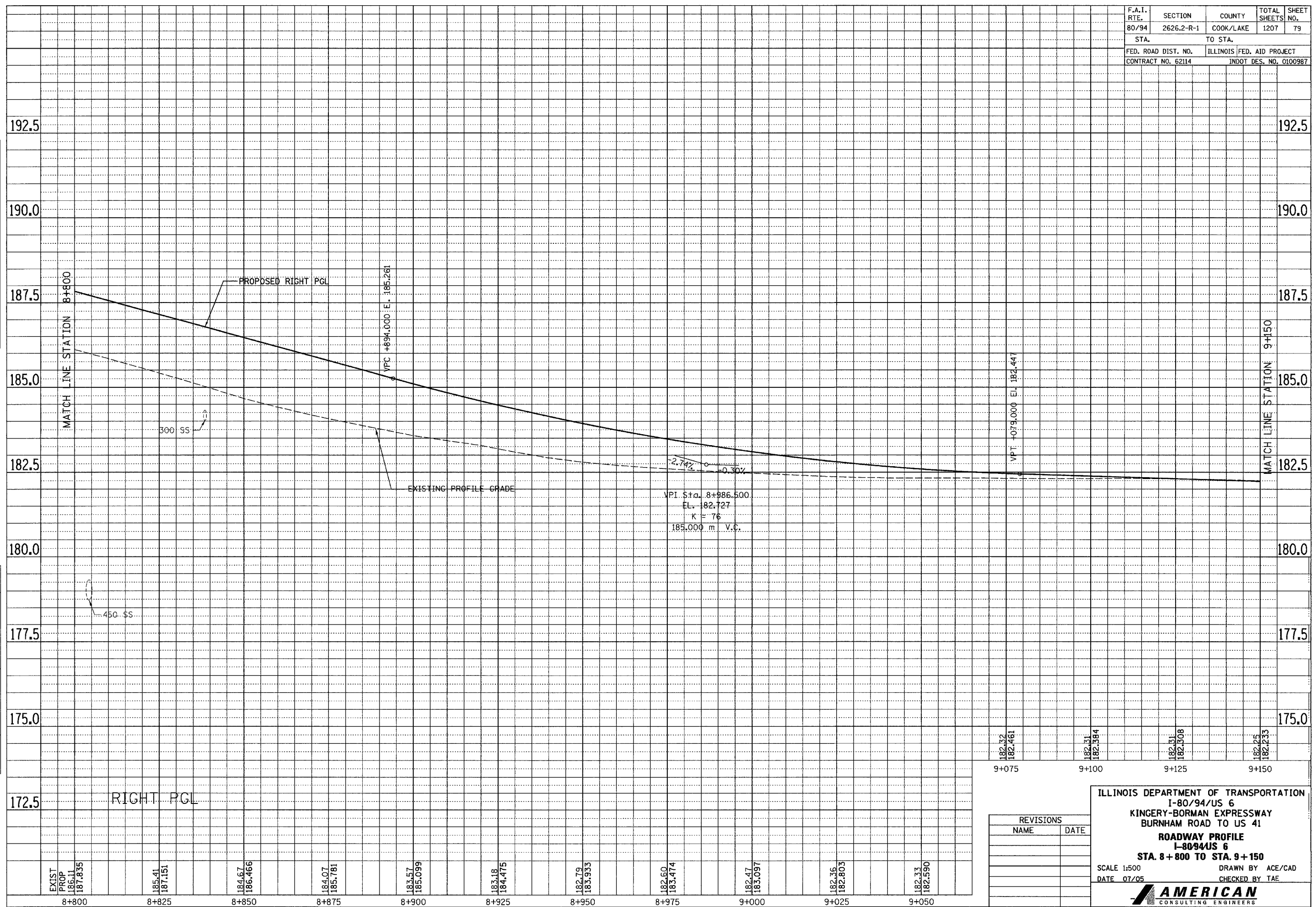


F.A.I. RTE. 80/94	SECTION 2626.2-R-1	COUNTY COOK/LAKE	TOTAL SHEETS 1207	SHEET NO. 79
STA. 8+800		TO STA. 9+150		
FED. ROAD DIST. NO. CONTRACT NO. 62114		ILLINOIS FED. AID PROJECT INDOT DES. NO. 0100987		

FINAL SURVEY PLOTTED	BY	DATE
NOTE BOOK TEMPLATE NO.		
AREAS CHECKED		

ORIGINAL SURVEY PLOTTED	BY	DATE
NOTE BOOK TEMPLATE NO.		
AREAS CHECKED		



EXIST PROP	183.57	183.18	182.79	182.60	182.47	182.36	182.33
186.11	185.41	184.67	184.07	183.57	183.09	182.36	182.33
187.835	187.151	186.466	185.781	185.099	184.475	183.803	182.590
8+800	8+825	8+850	8+875	8+900	8+925	8+950	8+975
						9+000	9+025
							9+050

182.32	182.31	182.31	182.31	182.25
182.461	182.364	182.308	182.253	
9+075	9+100	9+125	9+150	

REVISIONS	
NAME	DATE

ILLINOIS DEPARTMENT OF TRANSPORTATION
I-80/94/US 6
KINGERY-BORMAN EXPRESSWAY
BURNHAM ROAD TO US 41
ROADWAY PROFILE
I-80/94/US 6
STA. 8+800 TO STA. 9+150

SCALE 1:500 DRAWN BY ACE/CAD
DATE 07/05 CHECKED BY TAE

AMERICAN
CONSULTING ENGINEERS