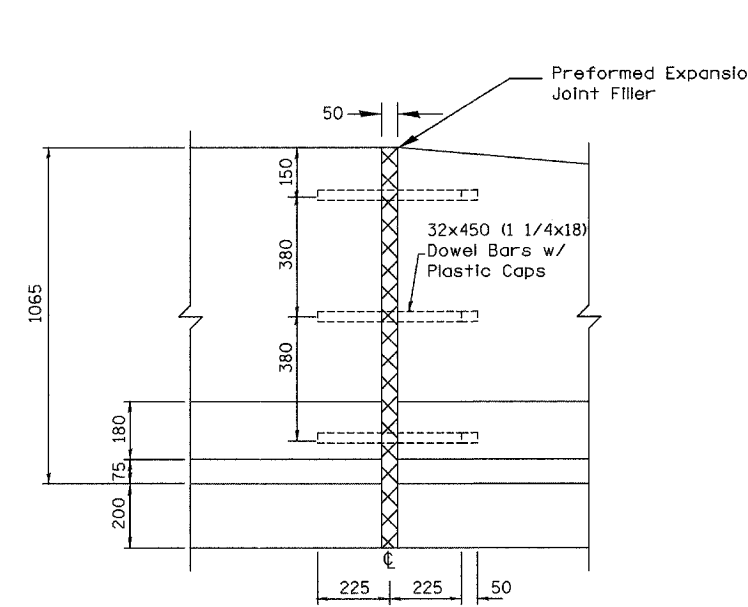
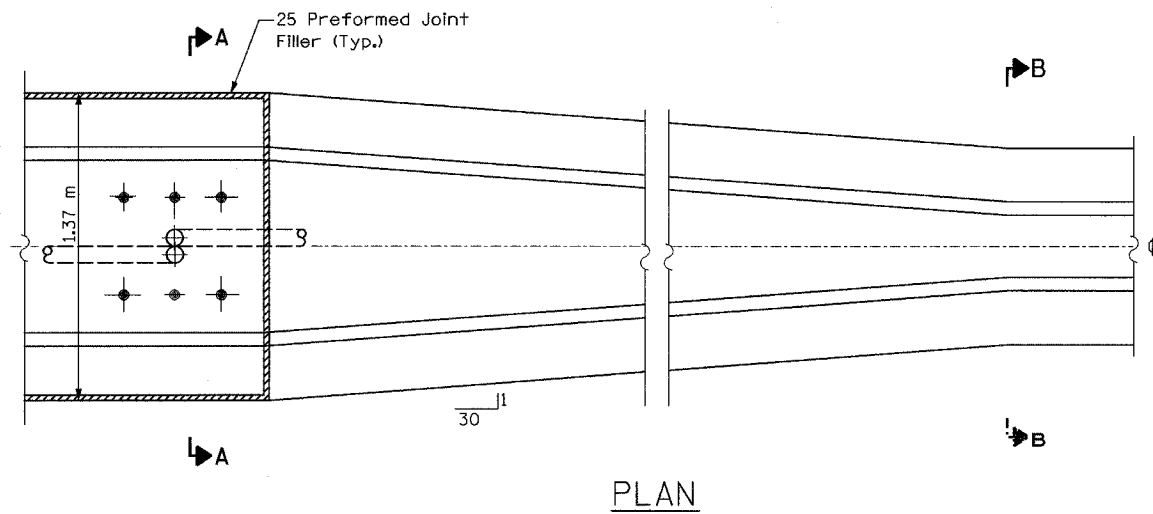
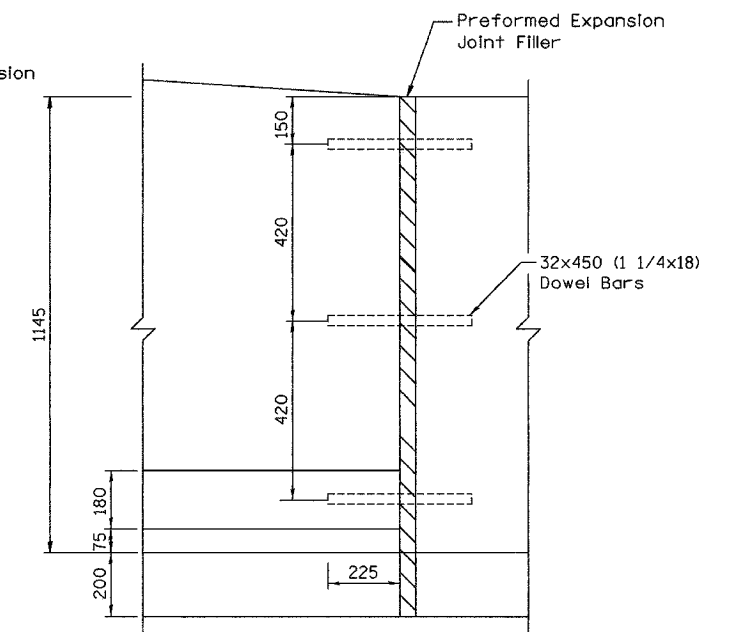


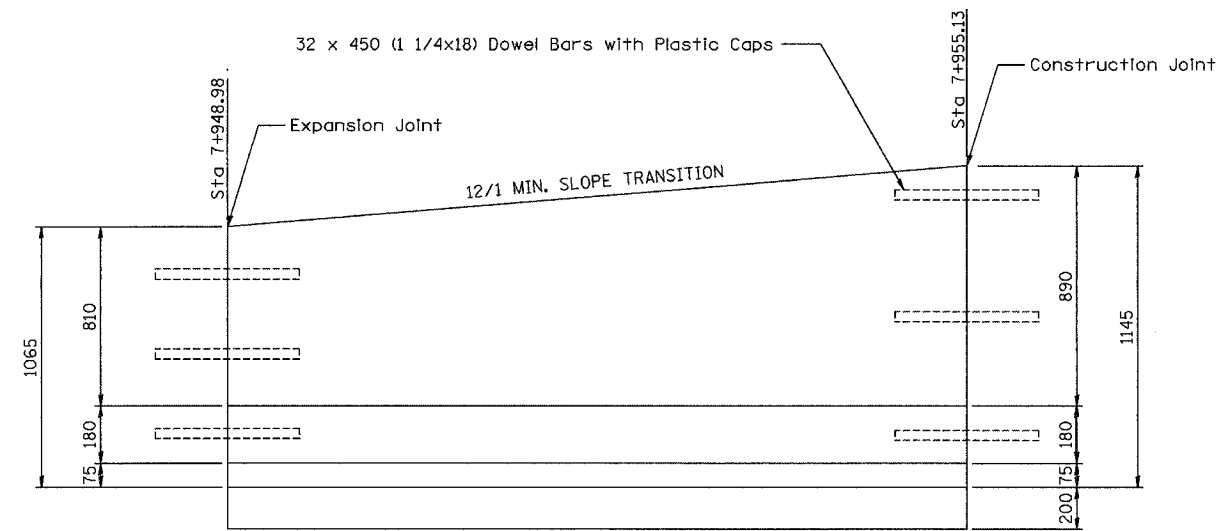
F.A.I. RTE.	SECTION	COUNTY	TOTAL SHEETS	SHEET NO.
80/94	2626.2-R-2	COOK/LAKE	1207	93
STA.	TO STA.			
FED. ROAD DIST. NO.	ILLINOIS	FED. AID PROJECT		
CONTRACT NO. 62114	INDOT DES. NO. 0100987			



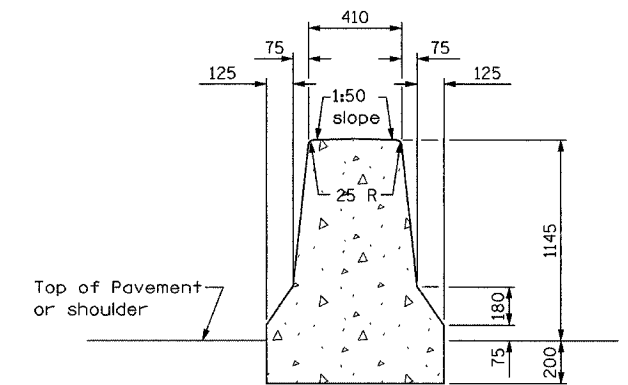
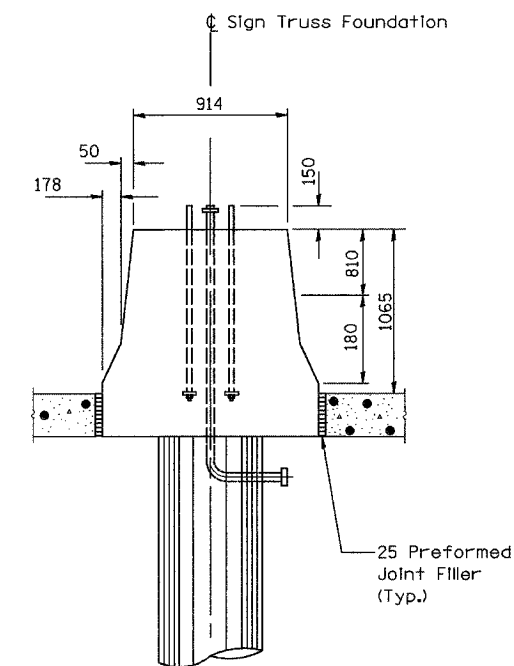
EXPANSION JOINT (1065 WALL)



CONSTRUCTION JOINT (1145 WALL)



ELEVATION



SECTION B-B

NOTES:

- 1) ALL REINFORCING BARS, BAR SPICERS, TIE BARS AND DOWEL BARS SHALL BE SEATED IN THE FINAL POSITION PRIOR TO THE CONCRETE OPERATIONS. BARS CANNOT BE MUCKED INTO PLACE.
- 2) THE FURNISHING AND PLACING OF TIE BARS AND DOWEL BARS SHALL BE INCLUDED IN THE COST OF THE CONCRETE BARRIER TRANSITION.
- 3) FOR CONDUIT LOCATIONS, SIZE, AND DETAILS, SEE THE ELECTRICAL AND/OR SURVEILLANCE PLANS. THE FURNISHING AND PLACING OF CONDUITS OF THE SIZE SPECIFIED SHALL BE PAID FOR SEPARATELY. EXPANSION/DEFLECTION COUPLES SHALL BE INCLUDED IN THE COST OF THE CONDUITS, OF THE SIZE SPECIFIED.
- 4) LENGTH OF BARRIER TRANSITION SHALL BE EQUAL TO LONGEST TRANSITION REQUIRED.

REVISIONS	
NAME	DATE

ILLINOIS DEPARTMENT OF TRANSPORTATION
 I-80/94/US 6
 KINGERY-BORMAN EXPRESSWAY
 BURNHAM ROAD TO US 41
BARRIER TRANSITION DETAIL

SCALE NONE
 DATE 07/05

DRAWN BY ACE/CAD
 CHECKED BY TAE

AMERICAN
 CONSULTING ENGINEERS