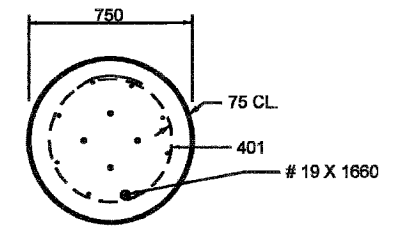
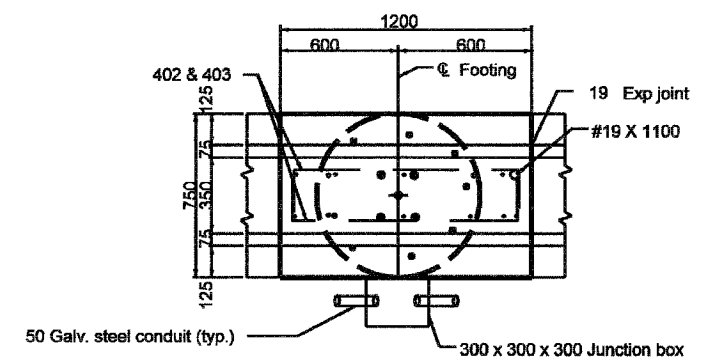
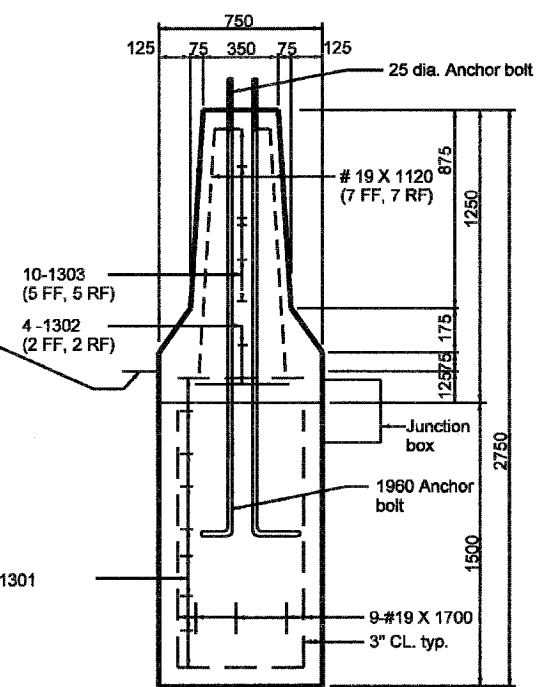
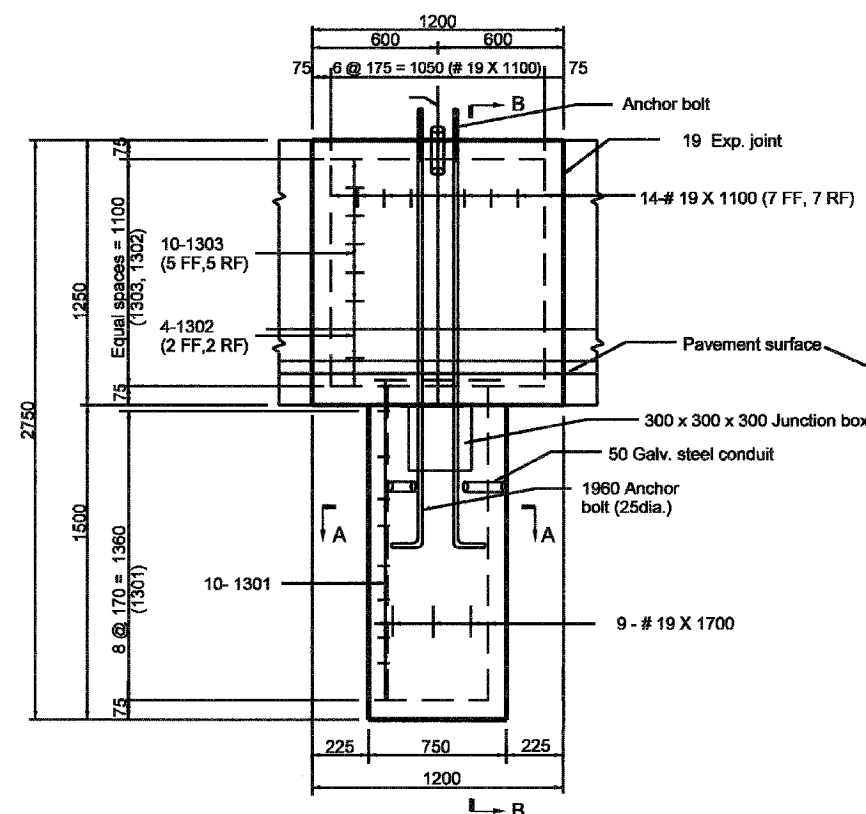
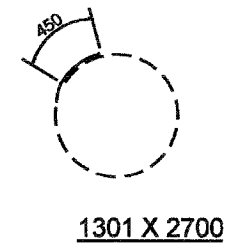
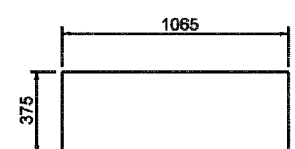
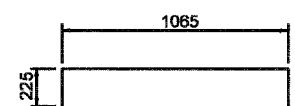


F.A.I. RTE.	SECTION	COUNTY	TOTAL SHEETS	SHEET NO.
80/94	2626.2-R-2	COOK/LAKE	1207	128
STA.	TO STA.			
FED. ROAD DIST. NO.	ILLINOIS	FED. AID PROJECT		
CONTRACT NO. 62114	INDOT DES. NO. 0100987			



- Notes:
- Junction box shall meet the following specifications:
 - Material: Polymer concrete
 - Color: Concrete gray
 - Cover rating: 20,000 lbs.



All Dimension are in mm unless otherwise specified

INDIANA DEPARTMENT OF TRANSPORTATION
CONVENTIONAL LIGHT FOUNDATION
FOR 1145 CONCRETE MEDIAN WALL
INSTALLATION.
SEPTEMBER 2002
STANDARD DRAWING NO. 807-LTFD-10

	<i>/s/ Richard L. VanCleave</i> DESIGN STANDARDS ENGINEER DATE 9-03-02
	<i>/s/ Richard H. Smutzer</i> CHIEF HIGHWAY ENGINEER DATE 9-03-02