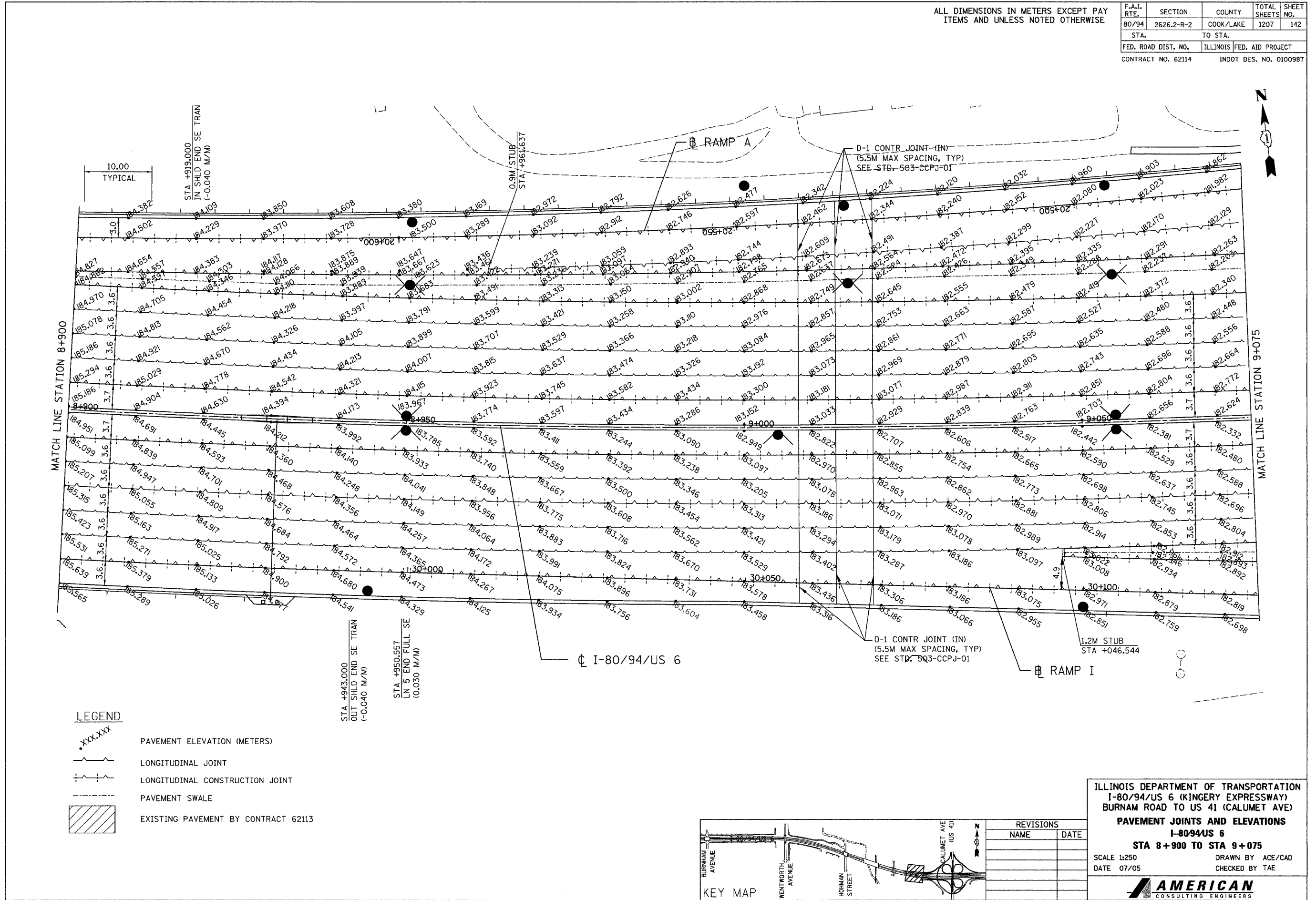


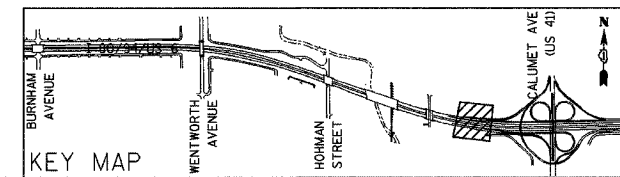
ALL DIMENSIONS IN METERS EXCEPT PAY ITEMS AND UNLESS NOTED OTHERWISE

F.A.I. RTE.	SECTION	COUNTY	TOTAL SHEETS	SHEET NO.
80/94	2626.2-R-2	COOK/LAKE	1207	142
STA.	TO STA.			
FED. ROAD DIST. NO.	ILLINOIS FED. AID PROJECT			
CONTRACT NO. 62114	INDOT DES. NO. 0100987			



**LEGEND**

- XXX.XXX PAVEMENT ELEVATION (METERS)
- LONGITUDINAL JOINT
- + LONGITUDINAL CONSTRUCTION JOINT
- - - PAVEMENT SWALE
- ▨ EXISTING PAVEMENT BY CONTRACT 62113



REVISIONS	
NAME	DATE

ILLINOIS DEPARTMENT OF TRANSPORTATION  
 I-80/94/US 6 (KINGERY EXPRESSWAY)  
 BURNHAM ROAD TO US 41 (CALUMET AVE)  
**PAVEMENT JOINTS AND ELEVATIONS**  
 I-8094US 6  
 STA 8+900 TO STA 9+075  
 SCALE 1:250 DRAWN BY ACE/CAD  
 DATE 07/05 CHECKED BY TAE

**AMERICAN**  
 CONSULTING ENGINEERS