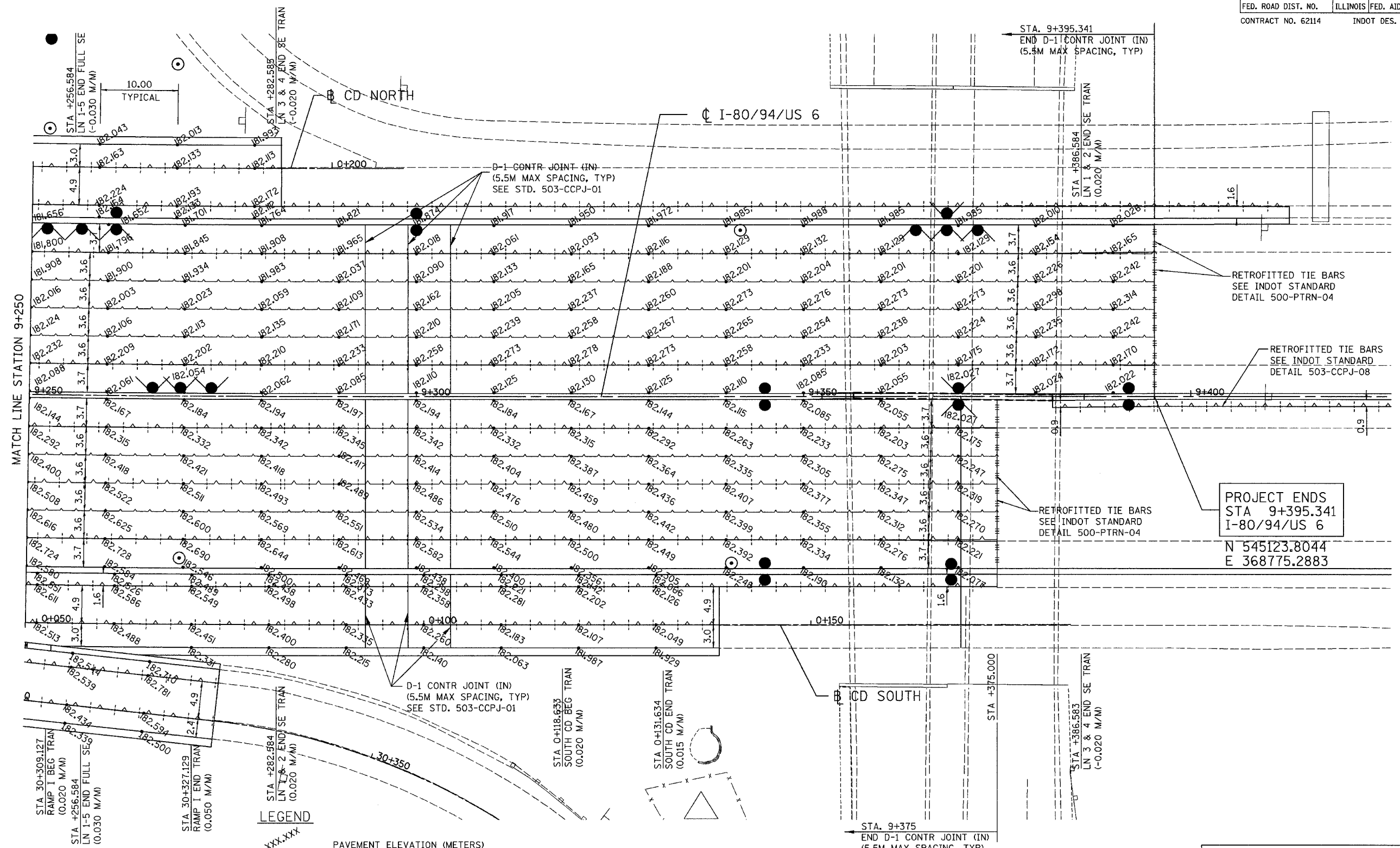


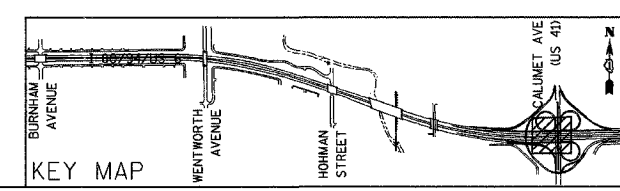
ALL DIMENSIONS IN METERS EXCEPT PAVEMENT ELEVATIONS AND UNLESS NOTED OTHERWISE

F.A.I. RTE.	SECTION	COUNTY	TOTAL SHEETS	SHEET NO.
80/94	2626.2-R-2	COOK/LAKE	1207	144
STA.	TO STA.			
FED. ROAD DIST. NO.	ILLINOIS	FED. AID PROJECT		
CONTRACT NO. 62114	INDOT DES. NO. 0100987			



PROJECT ENDS
STA 9+395.341
I-80/94/US 6
N 545123.8044
E 368775.2883

- LEGEND**
- xxx.xxx PAVEMENT ELEVATION (METERS)
 - |— LONGITUDINAL JOINT
 - |-|- LONGITUDINAL CONSTRUCTION JOINT
 - - - - PAVEMENT SWALE
 - ▨ EXISTING PAVEMENT BY CONTRACT 62113



REVISIONS	
NAME	DATE

ILLINOIS DEPARTMENT OF TRANSPORTATION
 I-80/94/US 6 (KINGERY EXPRESSWAY)
 BURNHAM ROAD TO US 41 (CALUMET AVE)
PAVEMENT JOINTS AND ELEVATIONS
 I-80/94/US 6
STA 9+250 TO STA 9+395.341
 SCALE 1:250 DRAWN BY ACE/CAD
 DATE 07/05 CHECKED BY TAE

AMERICAN
 CONSULTING ENGINEERS