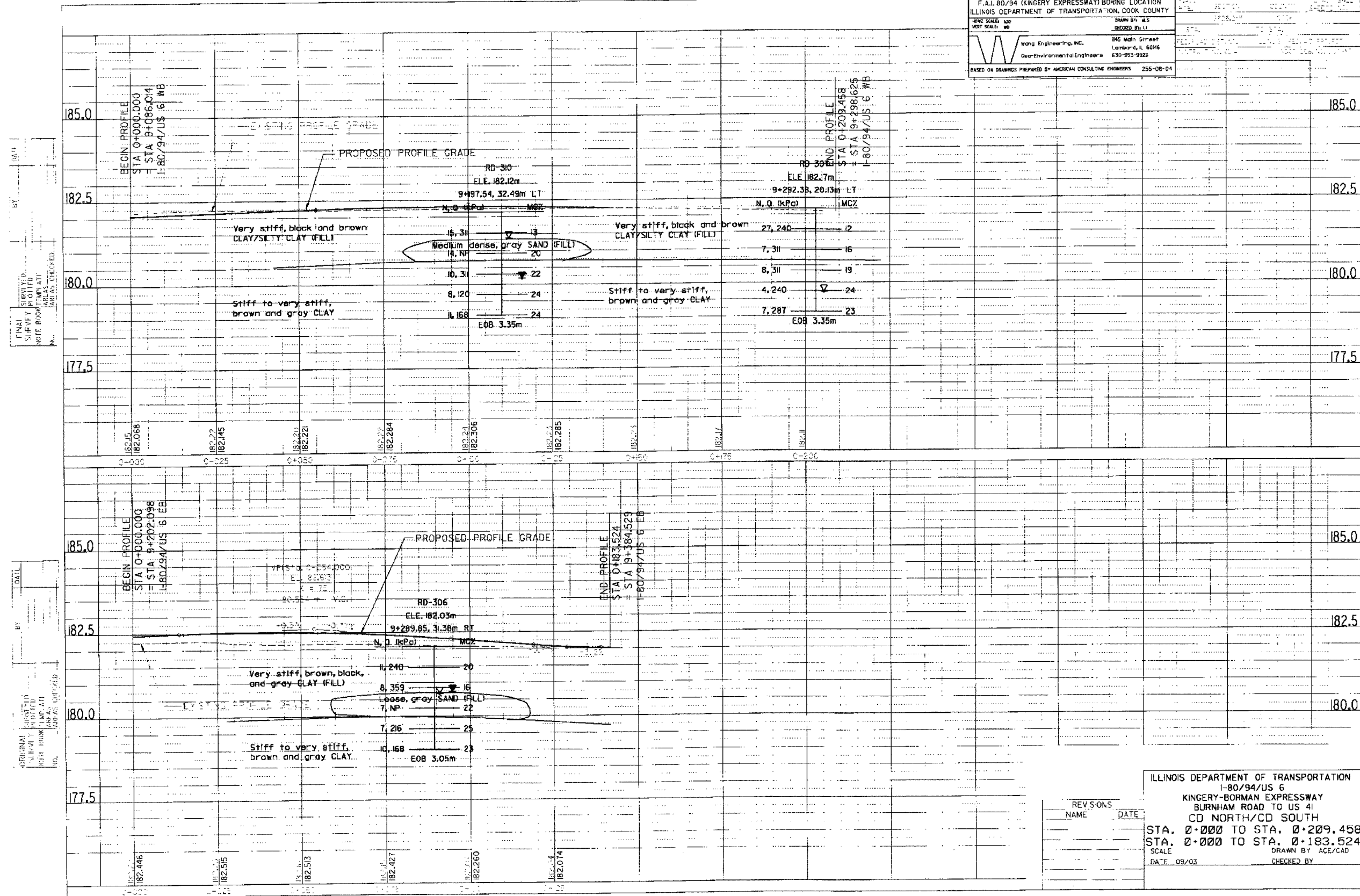


F.A.I. 80/94 (KINGERY EXPRESSWAY) BORING LOCATION
 ILLINOIS DEPARTMENT OF TRANSPORTATION, COOK COUNTY

HORIZ. SCALE: 1/2" = 10'	VERT. SCALE: 1" = 10'	DRAWN BY: M.S. GEORGE (PL)
		845 Main Street Lombard, IL 60148 630-953-9928
BASED ON DRAWINGS PREPARED BY AMERICAN CONSULTING ENGINEERS 255-08-04		



DATE: _____
 BY: _____
 CHECKED BY: _____
 APPROVED BY: _____
 TITLE: _____

DATE: _____
 BY: _____
 CHECKED BY: _____
 APPROVED BY: _____
 TITLE: _____

REV. NO.	NAME	DATE

ILLINOIS DEPARTMENT OF TRANSPORTATION
 I-80/94/US 6
 KINGERY-BORMAN EXPRESSWAY
 BURNHAM ROAD TO US 41
 CD NORTH/CD SOUTH
 STA. 0+000 TO STA. 0+209.458
 STA. 0+000 TO STA. 0+183.524
 SCALE: _____
 DATE: 09/03
 DRAWN BY: ACE/CAD
 CHECKED BY: _____