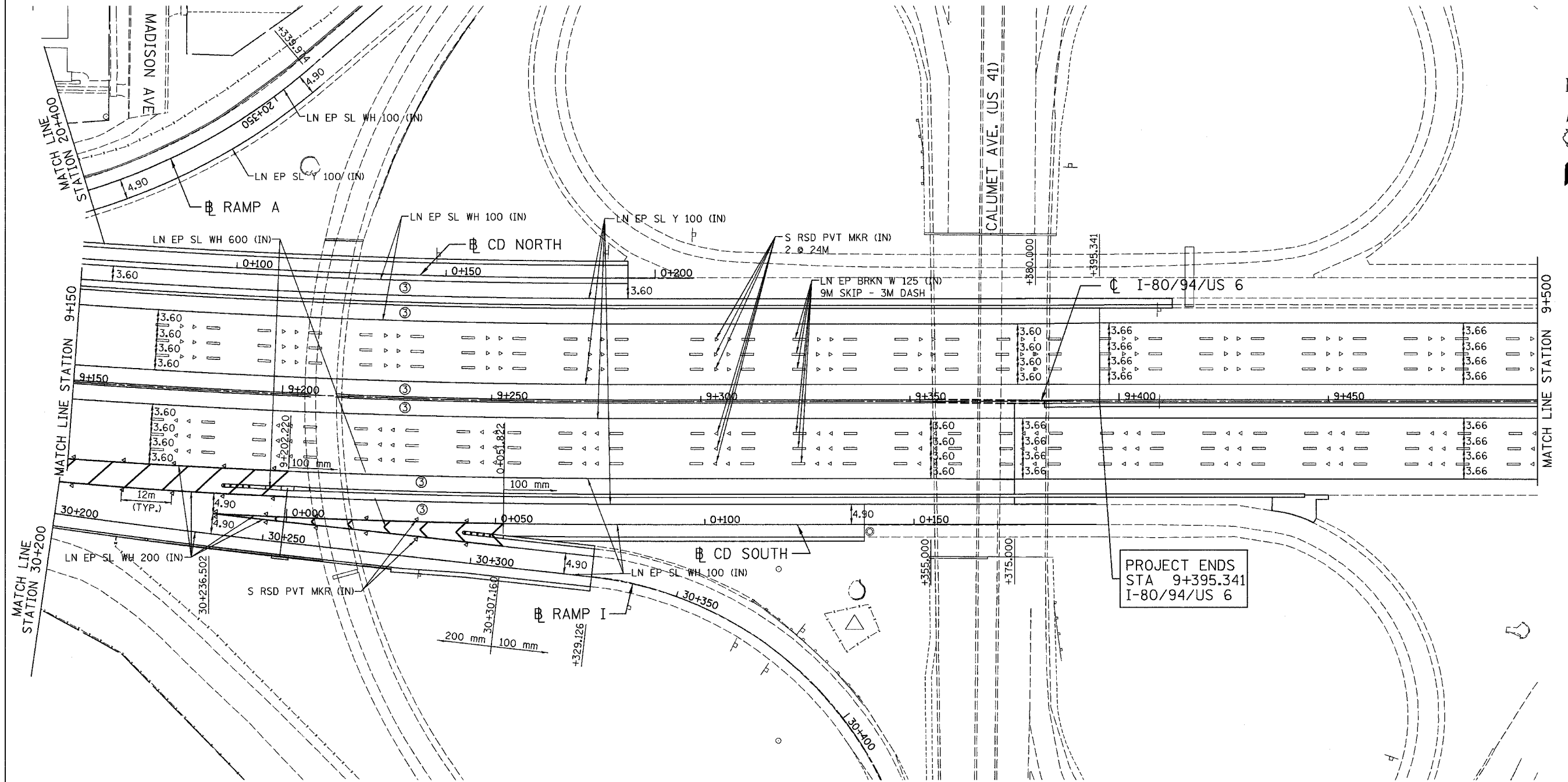


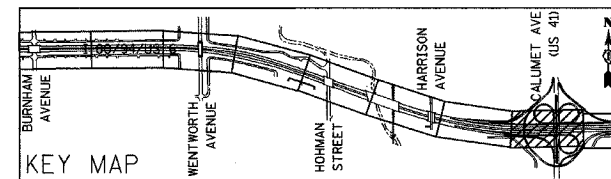
ALL DIMENSIONS IN METERS EXCEPT PAVEMENT MARKING ITEMS AND UNLESS NOTED OTHERWISE

F.A.I. RTE. 80/94	SECTION 2626.2-R-2	COUNTY COOK/LAKE	TOTAL SHEETS 1207	SHEET NO. 344
STA. 80+000		TO STA. 9+500		
FED. ROAD DIST. NO.		ILLINOIS FED. AID PROJECT		
CONTRACT NO. 62114		INDOT DES. NO. 0100987		



PROJECT ENDS
STA 9+395.341
I-80/94/US 6

NOTE: IF 3 EASTBOUND LANES EAST OF PROJECT LIMITS ARE OPEN THE CONTRACTOR SHALL COORDINATE LOCATION OF LANE DROP WITH INDOT.



REVISIONS	
NAME	DATE

ILLINOIS DEPARTMENT OF TRANSPORTATION
I-80/94/US 6
KINGERY-BORMAN EXPRESSWAY
BURNHAM ROAD TO US 41
PAVEMENT MARKING PLAN

STA. 9+150 TO STA. 9+500

SCALE 1:500
DATE 07/05

DRAWN BY ACE/CAD
CHECKED BY TAE

AMERICAN
CONSULTING ENGINEERS



I:\projects\8094\8094.dwg 09/14/05 09:10 AM