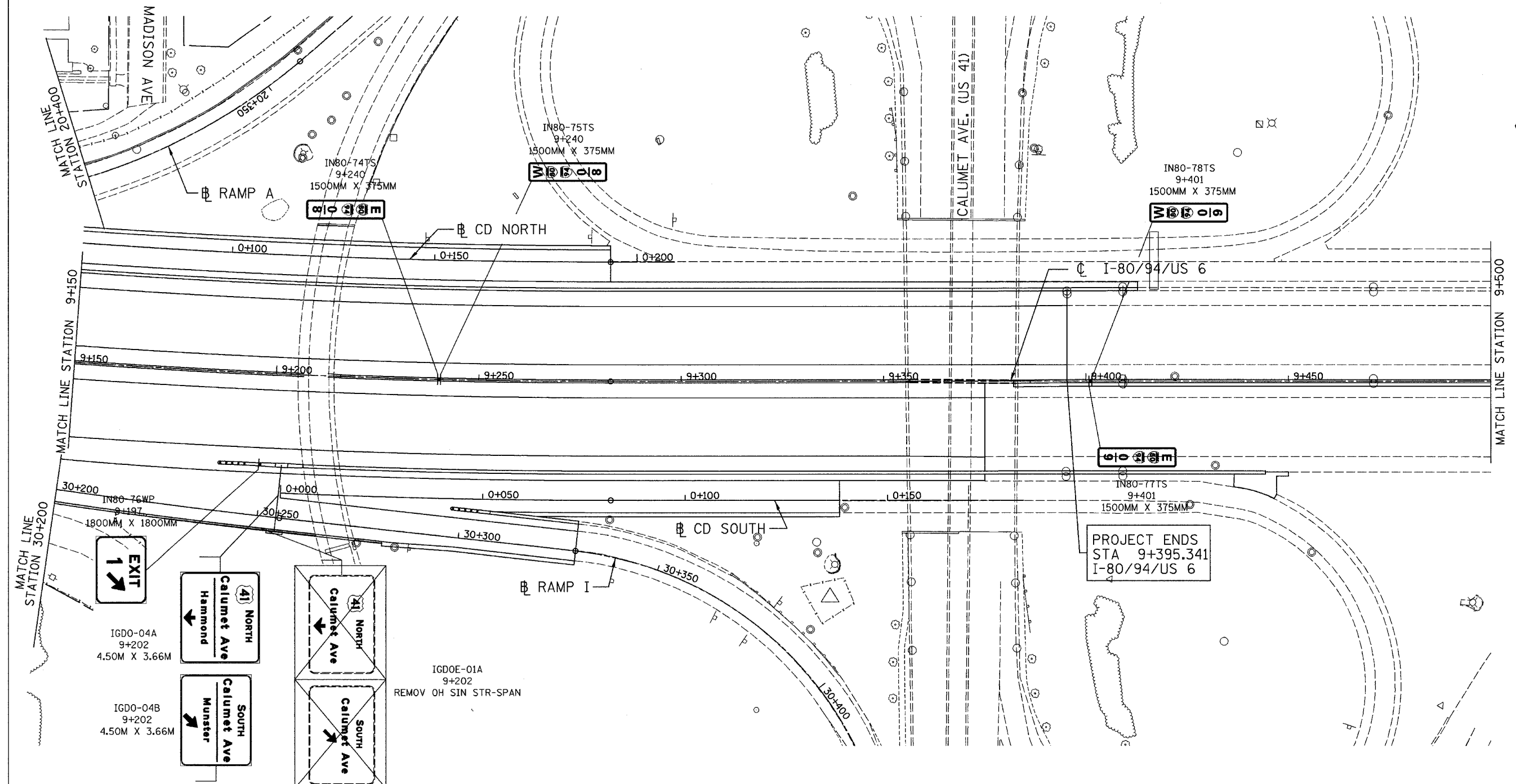
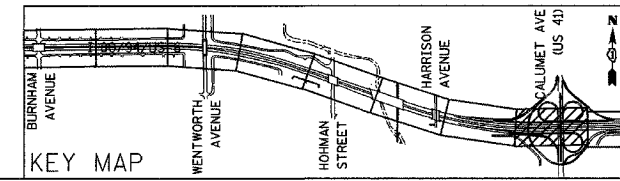


ALL DIMENSIONS IN METERS EXCEPT PAY ITEMS AND UNLESS NOTED OTHERWISE

F.A.I. RTE.	SECTION	COUNTY	TOTAL SHEETS	SHEET NO.
80/94	2626.2-R-2	COOK/LAKE	1207	360
STA.		TO STA.		
FED. ROAD DIST. NO.		ILLINOIS	FED. AID PROJECT	
CONTRACT NO. 62114		INDOT DES. NO. 0100987		



NOTE:
THE BANDING OF SIGNS TO THE OVERHEAD SIGN STRUCTURE SUPPORTS SHALL BE INCLUDED IN THE COST FOR SIGN PANELS.



REVISIONS	
NAME	DATE

ILLINOIS DEPARTMENT OF TRANSPORTATION
I-80/94/US 6
KINGERY-BORMAN EXPRESSWAY
BURNHAM ROAD TO US 41
SIGNING PLAN

STA. 9+150 TO STA. 9+500

SCALE 1:500
DATE 07/05

DRAWN BY ACE/CAD
CHECKED BY TAE

I:\projects\103031a_r05_04\10/2005_05_26_05.dwg