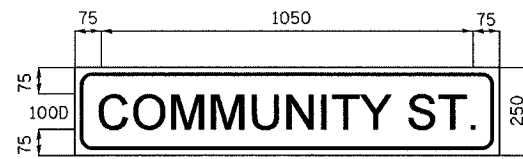
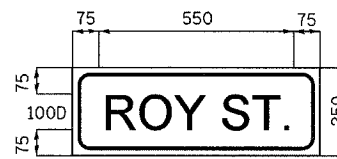


ALL DIMENSIONS IN MILLIMETERS EXCEPT
PAY ITEMS AND UNLESS NOTED OTHERWISE

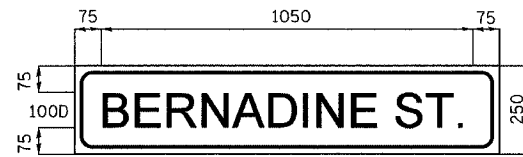
F.A.I. RTE.	SECTION	COUNTY	TOTAL SHEETS	SHEET NO.
80/94	2626.2-R-2	COOK/LAKE	1207	369
STA.		TO STA.		
FED. ROAD DIST. NO.	ILLINOIS	FED. AID PROJECT		
CONTRACT NO. 62114	INDOT DES. NO. 0100987			



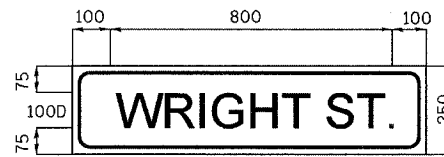
BORDER SIGN: WHITE/RED
R=30
TH=16
IN=10



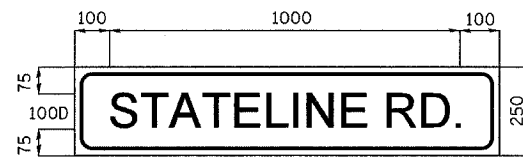
BORDER SIGN: WHITE/RED
R=30
TH=16
IN=10



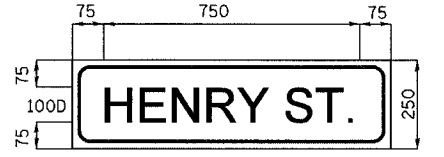
BORDER SIGN: WHITE/RED
R=30
TH=16
IN=10



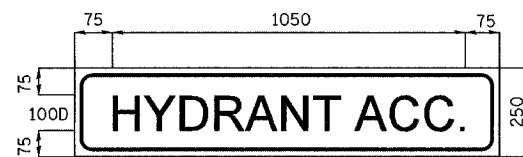
BORDER SIGN: WHITE/RED
R=30
TH=16
IN=10



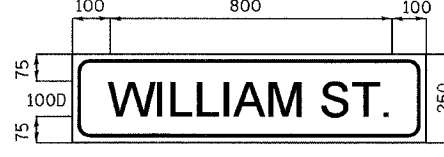
BORDER SIGN: WHITE/RED
R=30
TH=16
IN=10



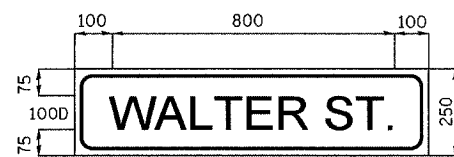
BORDER SIGN: WHITE/RED
R=30
TH=16
IN=10



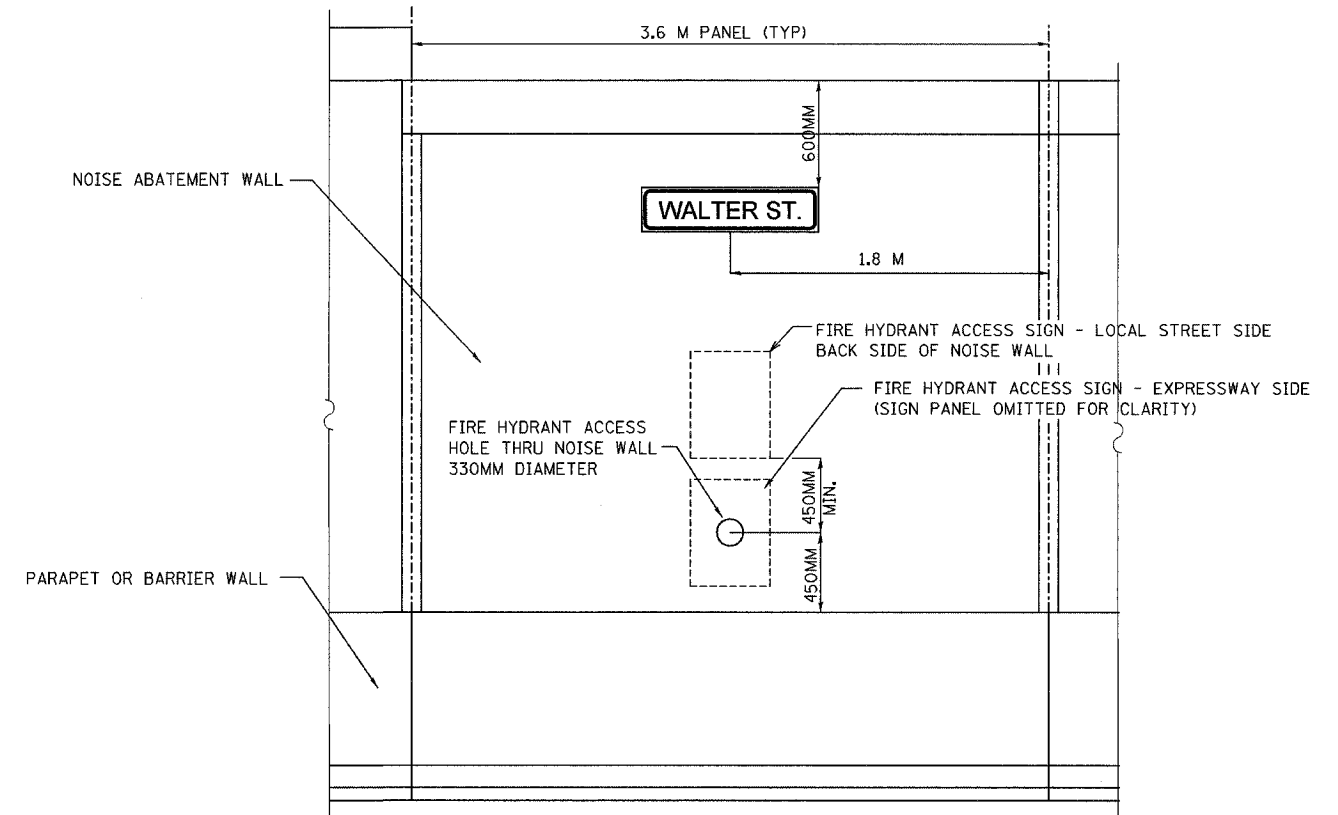
BORDER SIGN: WHITE/RED
R=30
TH=16
IN=10



BORDER SIGN: WHITE/RED
R=30
TH=16
IN=10



BORDER SIGN: WHITE/RED
R=30
TH=16
IN=10



FIRE HYDRANT ACCESS: SIGN PLACEMENT DETAIL

NOTE:
ALL STREET NAME SIGNS SHALL BE MOUNTED TO THE NOISE ABATEMENT WALL WITH A MINIMUM OF 4 BOLTS, SELF-LOCKING NUTS AND WASHERS, UNLESS OTHERWISE NOTED ON THE PLAN DETAILS. ALL 600MM X 450MM FIRE ACCESS SIGNS SHALL BE MOUNTED TO THE WALL WITH 2 BOLTS, SELF-LOCKING NUTS, AND WASHERS. ALL BOLTS SHALL BE OF SUFFICIENT LENGTH TO EXTEND THROUGH THE WALL AND BE A MINIMUM OF 6MM BEYOND THE NUT. ALL BOLTS, SELF-LOCKING NUTS AND WASHERS SHALL MEET THE REQUIREMENTS FOR MOUNTING SIGNS TO POSTS AS LISTED IN THE SPECIAL PROVISIONS AND IN THE STANDARD SPECIFICATIONS. THIS WORK SHALL BE INCLUDED IN THE COST PER SQUARE METER FOR THE TYPE OF SIGN PANEL SPECIFIED.

REVISIONS	
NAME	DATE

ILLINOIS DEPARTMENT OF TRANSPORTATION
I-80/94/US 6
KINGERY-BORMAN EXPRESSWAY
BURNHAM ROAD TO US 41
HYDRANT ACCESS SIGN LAYOUT
AND LOCATION DETAILS

SCALE DATE 07/05 DRAWN BY ACE/CAD CHECKED BY TAE

AMERICAN
CONSULTING ENGINEERS