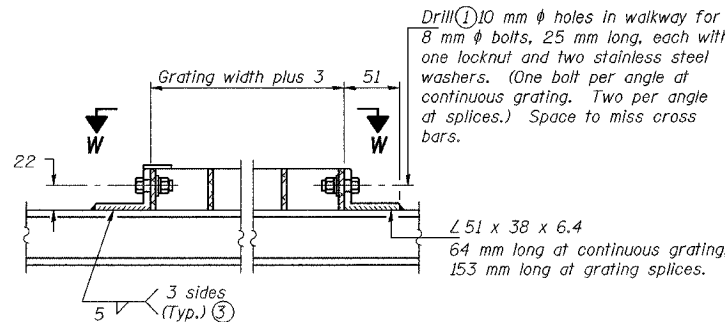
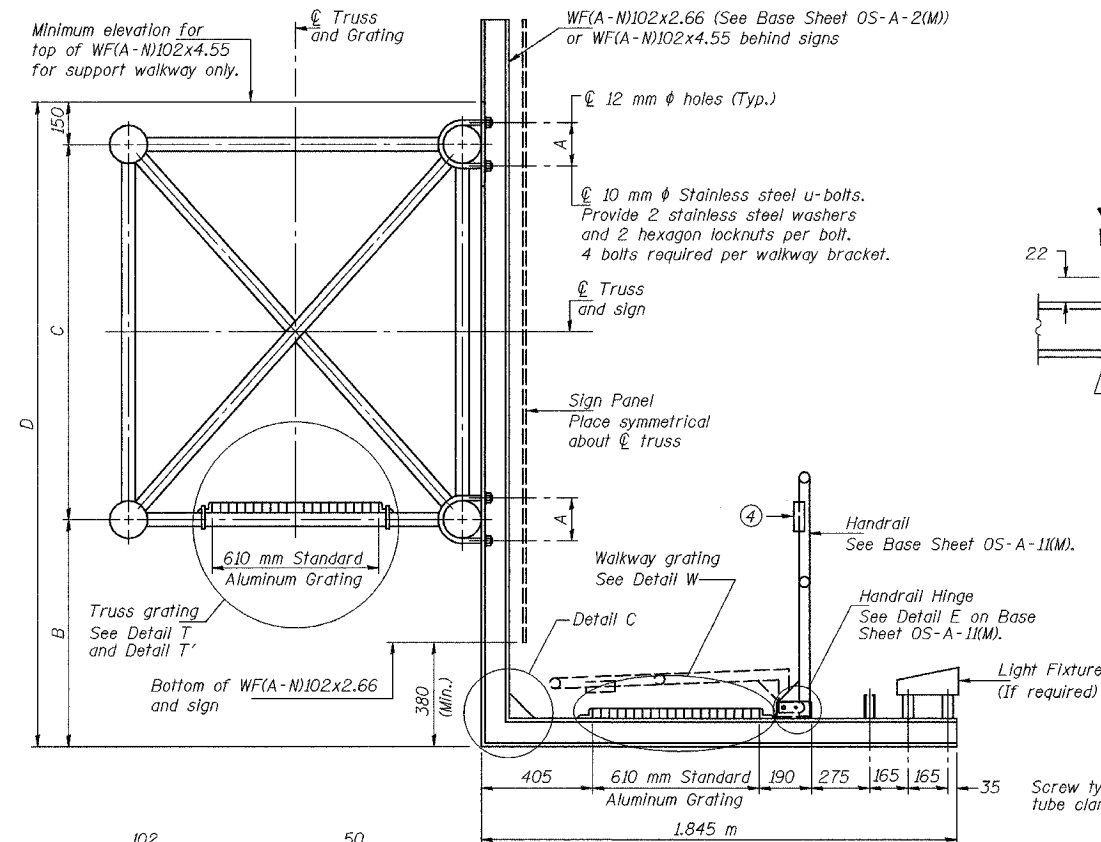
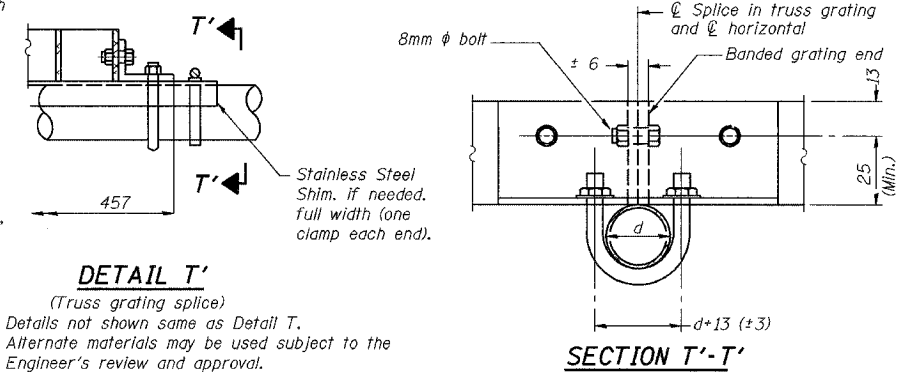


ALL DIMENSIONS IN MILLIMETERS EXCEPT
PAY ITEMS AND UNLESS NOTED OTHERWISE

F.A.I. RTE.	SECTION	COUNTY	TOTAL SHEETS	SHEET NO.
80/94	2626.2-R-2	COOK/LAKE	1207	381
STA.	TO STA.			
FED. ROAD DIST. NO.	ILLINOIS FED. AID PROJECT			
CONTRACT NO. 62114	INDOT DES. NO. 0100987			



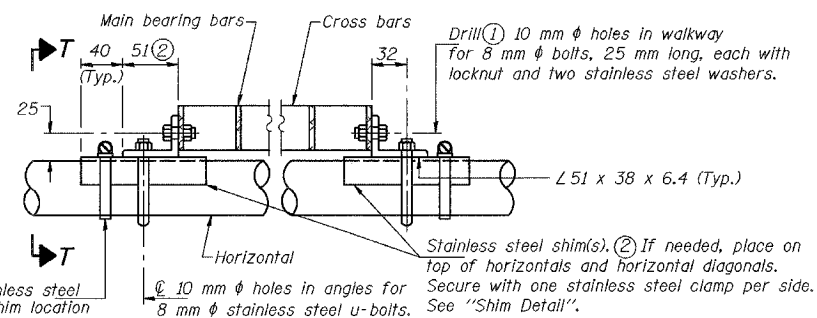
DETAIL W
(Walkway grating)



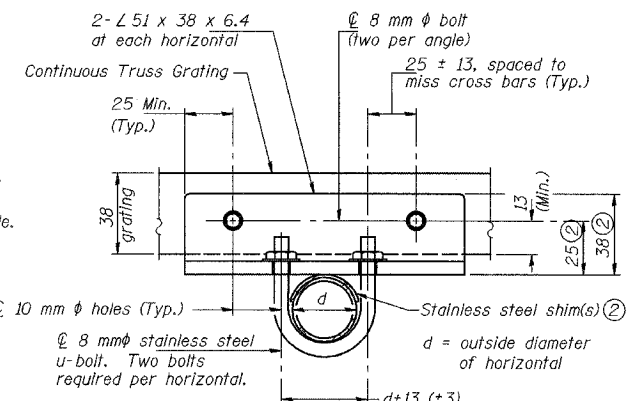
DETAIL T'

(Truss grating splice)
Details not shown same as Detail T.
Alternate materials may be used subject to the Engineer's review and approval.

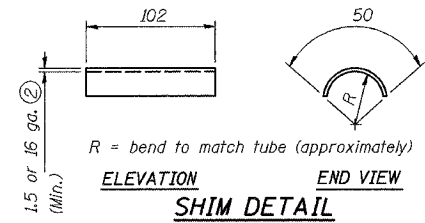
SECTION T'-T'



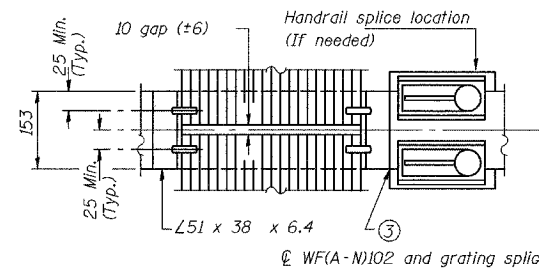
DETAIL T



SECTION T-T

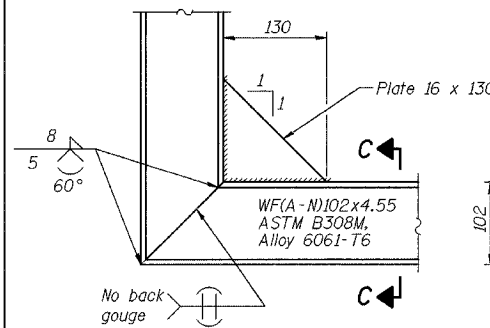


SHIM DETAIL



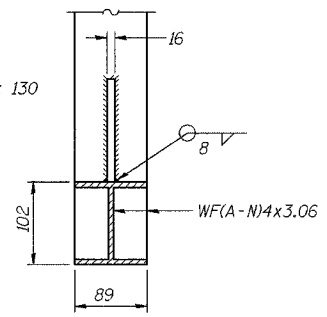
SECTION B-B

(AT WALKWAY GRATING SPLICE)

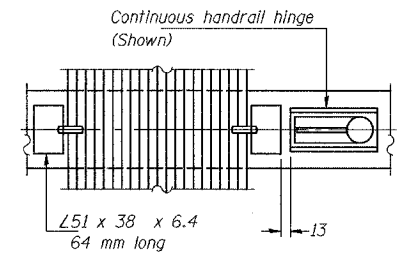


DETAIL C

(See Detail P, Base Sheet OS-A-11(M).)



SECTION C-C



SECTION W-W

SPECIFICATIONS FOR STANDARD ALUMINUM GRATING

Main Bearing Bars shall be 5 mm x 38 mm on 30 mm centers and conform to ASTM B221M Alloy 6061-T6.
Cross bars shall be 5 mm x 38 mm on 102 mm centers and conform to ASTM B221M Alloy 6063-T5 or 6061-T6

OR

Aluminum Grating with modified "T" sections for main bearing bars shall meet the following requirements:
Main bars shall conform to ASTM B221M Alloy 6061-T6 and have a minimum section modulus equal to $1.16 \times 10^3 \text{ mm}^3$ per bar, a depth of 38 mm, spaced on 30 mm centers.
Cross bars shall conform to ASTM B221 Alloy 6063-T5 or T-42 and spaced on 100 mm centers.

- Drilling holes in grating may be done in shop or field, based on Contractor's preference and subject to accurate alignment.
- Stainless steel shims shall be placed as shown in Detail T if needed to compensate for alignment variations between horizontal and diagonal pipes beyond adjustment provided by angles. Thicker shims may be used subject to shims performing properly.
- If Handrail Joint present, weld angle to WF(A-N)102 and 6 mm extension bars. (See Base Sheet OS-A-11(M).)
- 3 mm x 13 mm x 50 mm welded to handrail posts to protect locations that contact grating.

Structure Number	Station	A	B	C	D
ISO161080L162.9	6+951.478	173	1.46	1.6	3.21
ISO161080R163.1	7+239.540	148	1.91	1.6	3.66
ISO161080L163.1	7+312.695	186	1.46	1.6	3.21

NUMBER	REVISION	DATE

ILLINOIS DEPARTMENT OF TRANSPORTATION
I-80/94/US 6
KINGERY-BORMAN EXPRESSWAY
BURNHAM ROAD TO US 41
**OVERHEAD SIGN STRUCTURES
ALUMINUM WALKWAY DETAILS**

SCALE NONE DRAWN BY ACE/CAD
DATE 07/05 CHECKED BY TAE

AMERICAN
CONSULTING ENGINEERS

I:\Sheets\1101015.dwg 06/12/2005 08:05:31 AM