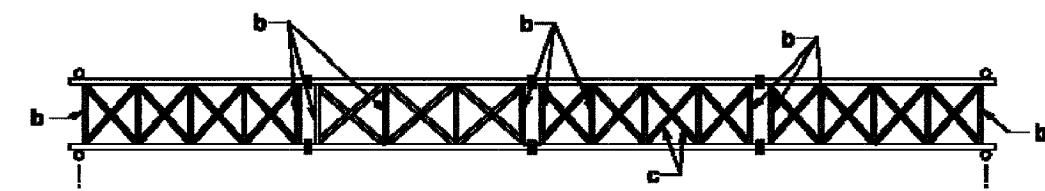
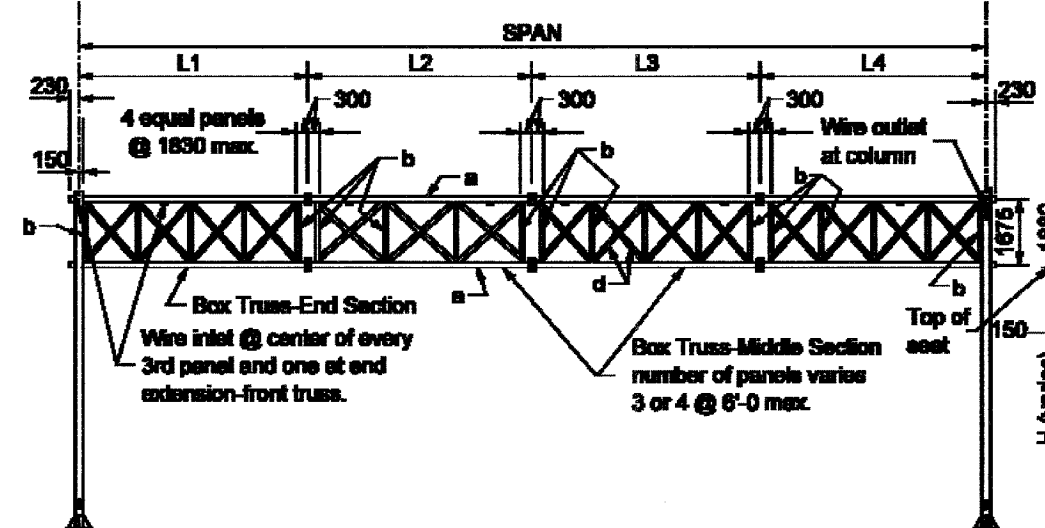


F.A.I. RTE.	SECTION	COUNTY	TOTAL SHEETS	SHEET NO.
80/94	2626.2-R-2	COOK/LAKE	1207	415
STA.		TO STA.		
FED. ROAD DIST. NO.	ILLINOIS	FED. AID PROJECT		
CONTRACT NO. 62114	INDOT DES. NO. 0100987			



PLAN



ELEVATION Facing Traffic

END ELEV.

NOTES

1. See Standard Drawing 802-SNOH-04 for dimensions not shown.
2. Max. deviation of any chord from a straight line in any section shall be 3mm. Box truss to be max. of 10mm. out of a straight line over the entire length of the structure in the vertical plane.
3. End internal diagonal (e) shall connect to the chord where the top horizontal diagonal connects to this chord as shown in plans and end elevation.

All Dimensions are in mm unless otherwise specified

INDIANA DEPARTMENT OF TRANSPORTATION

SIGN STRUCTURE TRUSS

ALUM. DETAILS

SEPTEMBER 2004

STANDARD DRAWING NO. 802-SNOH-01

	<i>/s/ Richard L. VandenBerghe</i> 9/8/04 REGISTERED ENGINEER DATE
	<i>/s/ Richard K. Smiley</i> 9/8/04 CHIEF ENGINEER DATE