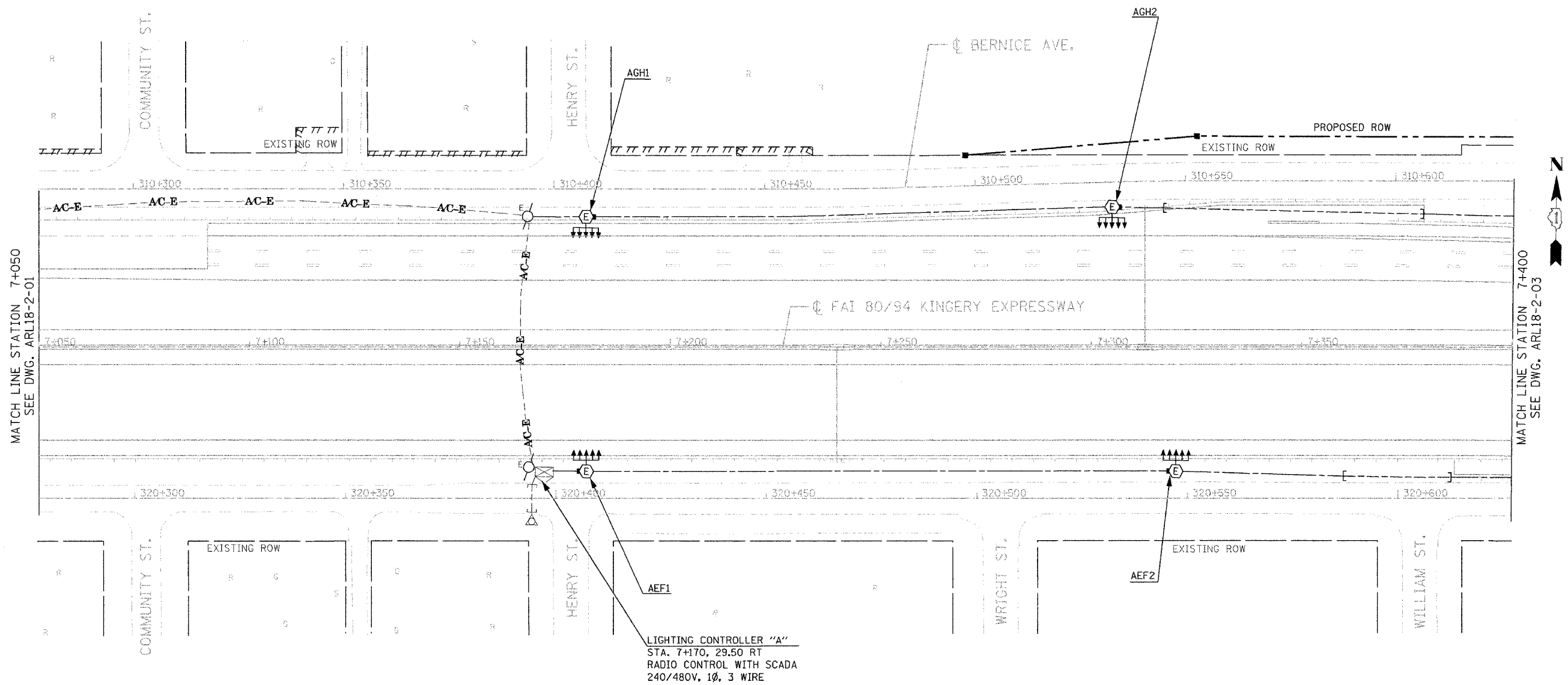


F.A.I. RTE.	SECTION	COUNTY	TOTAL SHEETS	SHEET NO.
80/94	2003-0891	COOK	1207	453
STA.	TO STA.			
FED. ROAD DIST. NO.	ILLINOIS	FED. AID PROJECT		
CONTRACT # 62114				



MATCH LINE STATION 7+050
SEE DWG. ARL18-2-01

MATCH LINE STATION 7+400
SEE DWG. ARL18-2-03

LIGHTING CONTROLLER "A"
STA. 7+170, 29.50 RT
RADIO CONTROL WITH SCADA
240/480V, 1Ø, 3 WIRE



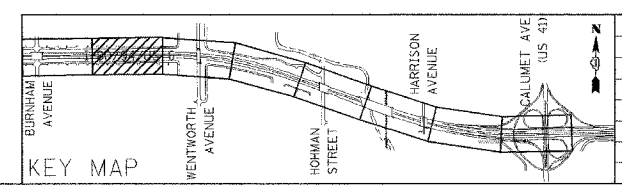
ARL18-2-02

ILLINOIS DEPARTMENT OF TRANSPORTATION
I-80/94/US 6
KINGERY-BORMAN EXPRESSWAY
BURNHAM ROAD TO US 41
EXISTING LIGHTING PLAN
I-80 /94 /US-6
STA. 7+050 TO STA. 7+400

SCALE 1:500
DATE 07/18/05

DRAWN BY EA0/BC
CHECKED BY PKG/BC

GANDHI AND ASSOCIATES, INC.
ENGINEERS AND PLANNERS
5035 N. NORTHWEST HIGHWAY
SUITE 204
CHICAGO, ILLINOIS 60631 TEL: (773)774-5900



REVISIONS	
NAME	DATE