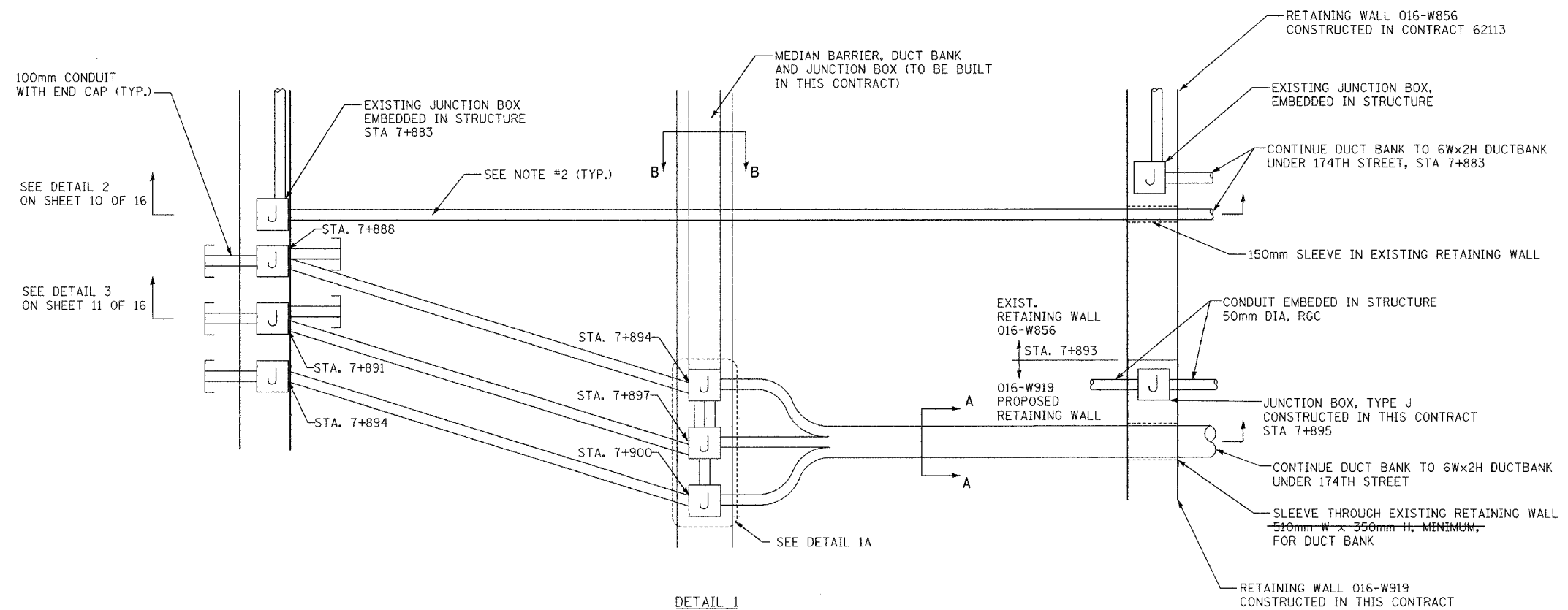


ALL DIMENSIONS IN METERS EXCEPT PAVEMENT ITEMS AND UNLESS NOTED OTHERWISE.

F.A.I. RTE.	SECTION	COUNTY	TOTAL SHEETS	SHEET NO.
80/94	2626.2-R-2	COOK	1207	481
STA.	TO STA.			
FED. ROAD DIST. NO.	ILLINOIS	FED. AID PROJECT		
CONTRACT #62114	INDOT DES. NO. 0100987			



100mm CONDUIT WITH END CAP (TYP.)

SEE DETAIL 2 ON SHEET 10 OF 16

SEE DETAIL 3 ON SHEET 11 OF 16

EXISTING JUNCTION BOX EMBEDDED IN STRUCTURE STA 7+883

SEE NOTE #2 (TYP.)

MEDIAN BARRIER, DUCT BANK AND JUNCTION BOX (TO BE BUILT IN THIS CONTRACT)

RETAINING WALL 016-W856 CONSTRUCTED IN CONTRACT 62113

EXISTING JUNCTION BOX, EMBEDDED IN STRUCTURE

CONTINUE DUCT BANK TO 6Wx2H DUCTBANK UNDER 174TH STREET, STA 7+883

150mm SLEEVE IN EXISTING RETAINING WALL

EXIST. RETAINING WALL 016-W856 STA. 7+893

CONDUIT EMBEDDED IN STRUCTURE 50mm DIA, RGC

016-W919 PROPOSED RETAINING WALL

JUNCTION BOX, TYPE J CONSTRUCTED IN THIS CONTRACT STA 7+895

CONTINUE DUCT BANK TO 6Wx2H DUCTBANK UNDER 174TH STREET

SLEEVE THROUGH EXISTING RETAINING WALL 510mm W x 350mm H. MINIMUM, FOR DUCT BANK

RETAINING WALL 016-W919 CONSTRUCTED IN THIS CONTRACT

DETAIL 1
PLAN VIEW
I-80, STATION 7+883 TO 7+900
N.T.S.

1-100mm PVC CONDUIT ENCASED IN REINFORCED CONCRETE WITH 3-25mm CNC INNER DUCTS (TYP. OF 3)

1-6/S FIBER OPTIC CABLE IN 30mm CNC

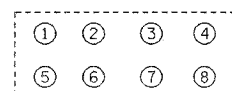
1-24/S FIBER OPTIC CABLE IN 30mm CNC

48-STRAND FIBER OPTIC CABLE IN 30mm CNC

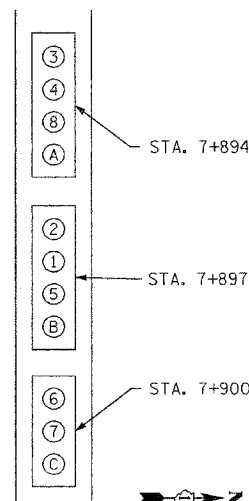
1 - 96/S FIBER OPTIC CABLE IN 30mm CNC

SECTION A-A

FIBER OPTIC CABLES INSTALLED UNDER CONTRACT 62664.



SECTION B-B



DETAIL 1A
CONDUIT-JUNCTION BOX ASSIGNMENTS
N.T.S.

NOTES:

1. FOR TYPICAL ELEVATIONS, SEE SHEETS 10 AND 11.
2. ALL DUCT BANKS UNDER PAVEMENT IN REINFORCED CONCRETE.
3. MEDIAN BARRIER WALL, DUCT BANK IN MEDIAN BARRIER WALL FOUNDATION, AND CONDUIT STUBS EXTENDING FROM MEDIAN BARRIER WALL CONSTRUCTED IN THIS CONTRACT. CONDUITS IN DUCT BANKS UNDER PAVEMENT CONSTRUCTED IN THIS CONTRACT. CONDUITS IN TRENCH CONSTRUCTED IN CONTRACT 62664. CONDUITS AND JUNCTION BOXES EMBEDDED IN BARRIER WALLS CONSTRUCTED IN CONTRACT 62113.

SHEET 9 OF 16

REVISIONS	
NAME	DATE

ILLINOIS DEPARTMENT OF TRANSPORTATION
I-80/94/US 6
KINGERY-BORMAN EXPRESSWAY
BURNHAM ROAD TO US 41
STATE LINE CONDUIT
ARRANGEMENT
STA. 7+870

SCALE N.T.S.
DATE 07/05

DRAWN BY JRH
CHECKED BY DEM

