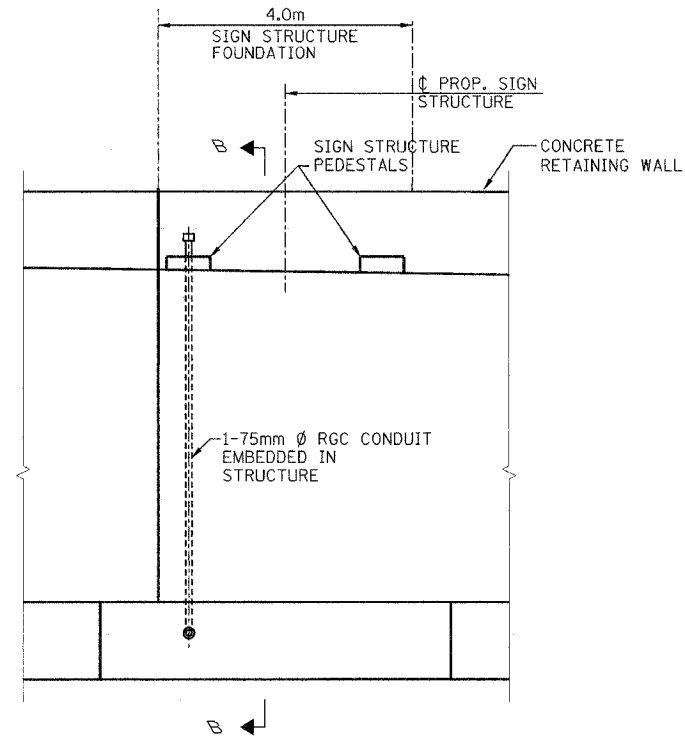
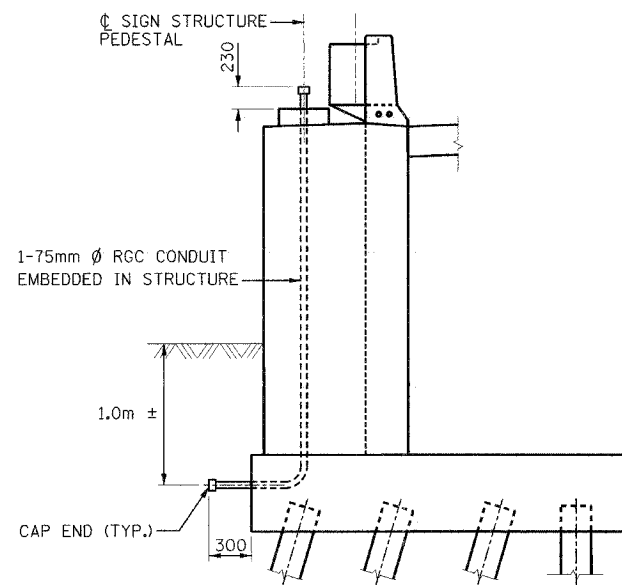


ALL DIMENSIONS IN METERS EXCEPT PAY ITEMS AND UNLESS NOTED OTHERWISE.

F.A.I. RTE.	SECTION	COUNTY	TOTAL SHEETS	SHEET NO.
80/94	2626.2-R-2	COOK	1207	488
STA.	TO STA.			
FED. ROAD DIST. NO.	ILLINOIS	FED. AID PROJECT		
CONTRACT #62114	INDOT DES. NO. 0100987			



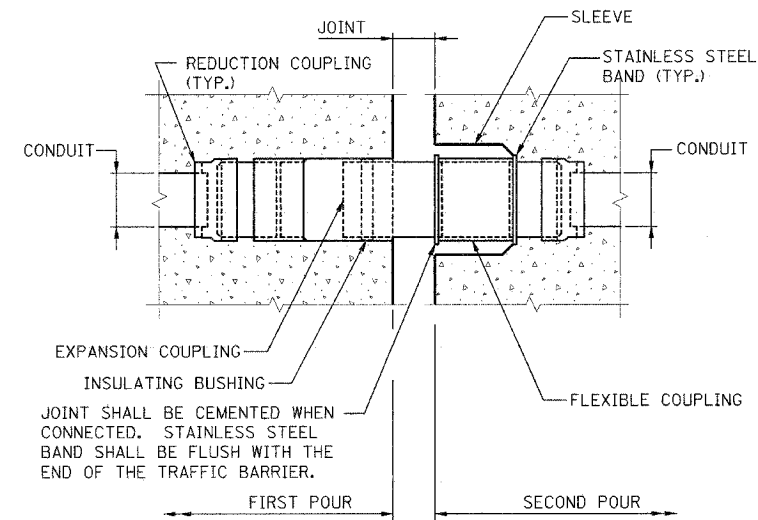
WALL ELEVATION



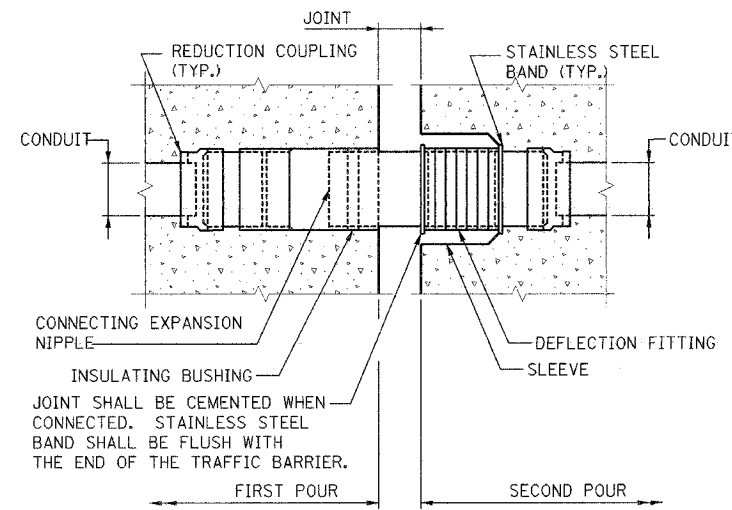
SECTION B-B

DETAIL 7

STRUCTURE SHOWN TO ILLUSTRATE CONDUIT LOCATION ONLY. REFER TO STRUCTURAL PLANS FOR DESIGN OF SPECIFIC STRUCTURES.



CONDUIT EXPANSION JOINT



CONDUIT EXPANSION/DEFLECTION JOINT

NOTES FOR CONDUIT EXP. & EXP./DEFL. JOINTS:

1. ALL MATERIALS (FITTING, COUPLINGS, CONDUIT, ETC.) INCLUDED WITH CONDUIT EMBEDDED IN STRUCTURE.
2. ALL COUPLINGS SHALL BE WATERTIGHT.
3. EXPANSION ASSEMBLY SHALL BE INSTALLED IN ALL EXPANSION JOINTS THAT ARE AT LEAST 45MM AT 10°C, UNLESS OTHERWISE SHOWN OR AS DIRECTED BY THE ENGINEER. EXPANSION COUPLINGS SHALL HAVE A TOTAL MINIMUM MOVEMENT OF 150MM OR THE MOVEMENT CAPACITY OF THE STRUCTURAL JOINT, WHICHEVER IS GREATER.
4. EXPANSION/DEFLECTION ASSEMBLY SHALL BE INSTALLED AT EXPANSION JOINT LOCATIONS WHERE MOVEMENT PERPENDICULAR TO THE LONGITUDINAL AXIS OF THE CONDUIT OR CONDUITS IS POSSIBLE, OR AS DIRECTED BY THE ENGINEER. EXPANSION/DEFLECTION COUPLINGS SHALL HAVE A TOTAL LONGITUDINAL MOVEMENT OF 100MM OR THE MOVEMENT CAPACITY OF THE STRUCTURAL JOINT, WHICHEVER IS GREATER. THE ROTATIONAL CAPACITY OF THE DEFLECTION FITTING SHALL ALLOW FOR A MINIMUM MOVEMENT OF 18MM IN THE TRANSVERSE DIRECTION.
5. EXPANSION AND EXPANSION/DEFLECTION COUPLING TYPES SHALL BE APPROVED BY THE ENGINEER.

SHEET 16 OF 16

REVISIONS		ILLINOIS DEPARTMENT OF TRANSPORTATION I-80/94/US 6 KINGERY-BORMAN EXPRESSWAY BURNHAM ROAD TO US 41 ELECTRICAL RACEWAY DETAILS
NAME	DATE	
		SCALE N.T.S. DATE 07/05 DRAWN BY JRH CHECKED BY DEM



C:\WP51\DRAWING\151\G1804811.DWG 16/22/2005 8:03:53 AM