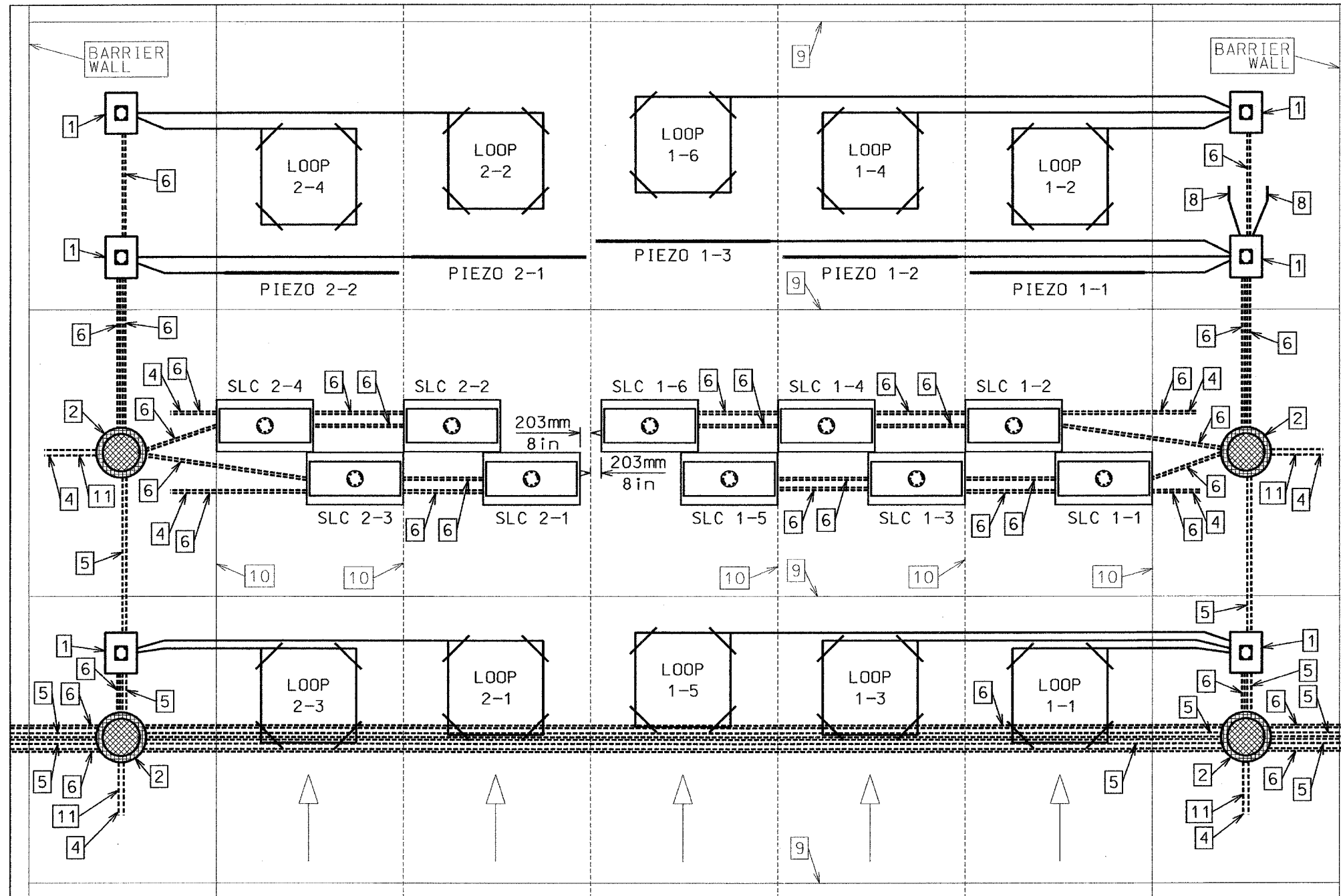


F.A.I. RTE.	SECTION	COUNTY	TOTAL SHEETS	SHEET NO.
80/94	2626-2-R-1	COOK	1207	490
STA.	TO STA.			
FED. ROAD DIST. NO.	ILLINOIS	FED. AID PROJECT		
CONTRACT NO. 62114				



NOTES:
 1. FOR ADDITIONAL PLACEMENT AND SENSOR SIZE DETAILS, SEE THE EB PLACEMENT DETAILS AND EB DETAILS SHEETS OF THE PLANS.

EB LANE LAYOUT

LEGEND 1 DETECTOR HOUSING (SEE DETAIL) 2 SIGNAL HANDHOLE WITH NEENAH R-1672 SOLID LID & RING ASSY 3 TYPE "M" SIGNAL CONTROLLER CABINET AND FOUNDATION 4 CONNECT TO NEAREST CATCH BASIN 5 76 MM PVC CONDUIT OR 76 MM HIGH DENSITY POLYETHYLENE EHMW PIPE 6 50 MM PVC CONDUIT OR 50 MM HIGH DENSITY POLYETHYLENE EHMW PIPE 7 50 MM GALVANIZED STEEL CONDUIT 8 TEMPERATURE SENSOR 9 D1 CONTRACTION PAVEMENT JOINT 10 LONGITUDINAL PAVEMENT JOINT 11 100 MM PVC CONDUIT OR 100 MM HIGH DENSITY POLYETHYLENE EHMW PIPE	REVISIONS <table border="1"> <thead> <tr> <th>DATE</th> <th>DESCRIPTION</th> </tr> </thead> <tbody> <tr><td> </td><td> </td></tr> <tr><td> </td><td> </td></tr> <tr><td> </td><td> </td></tr> <tr><td> </td><td> </td></tr> <tr><td> </td><td> </td></tr> </tbody> </table>	DATE	DESCRIPTION												RECOMMENDED FOR APPROVAL <i>Scott A. MacArthur</i> 6-9-05 DESIGN ENGINEER DATE	INDIANA DEPARTMENT OF TRANSPORTATION EB LANE LAYOUT	I-80/94/US 6 KINGERY-BORMAN EXPRESSWAY BURNHAM ROAD TO US 41 HORIZONTAL SCALE Not To Scale VERTICAL SCALE Not To Scale WIM STATION DETAILS
	DATE	DESCRIPTION															
DESIGNED: DRK CHECKED: DRK DRAWN: DRK CHECKED: DRK																	