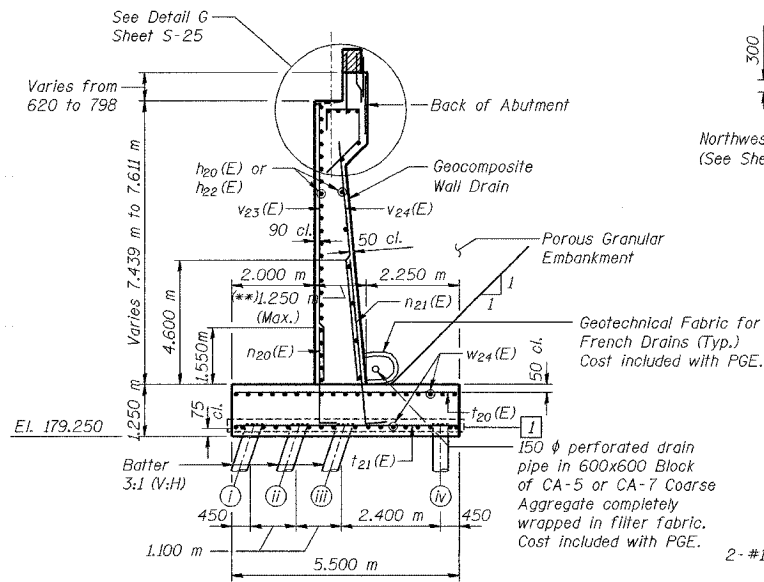


ELEVATIONS AT BACK OF BACKWALL

Beam	T/Hatch Block Elev.	Bearing Seat Elev.
1	189.156	187.939
2	189.161	187.939
3	189.209	187.992
4	189.255	188.038
5	189.292	188.074
6	189.328	188.111
7	189.334	188.111
8	189.308	188.091
9	189.283	188.065
10	189.248	188.030
11	189.212	187.994
12	189.217	187.994



SECTION THRU NORTH ABUTMENT
 (**NOTE: Wall thickness includes 40 mm Rustication.)

PILE DATA

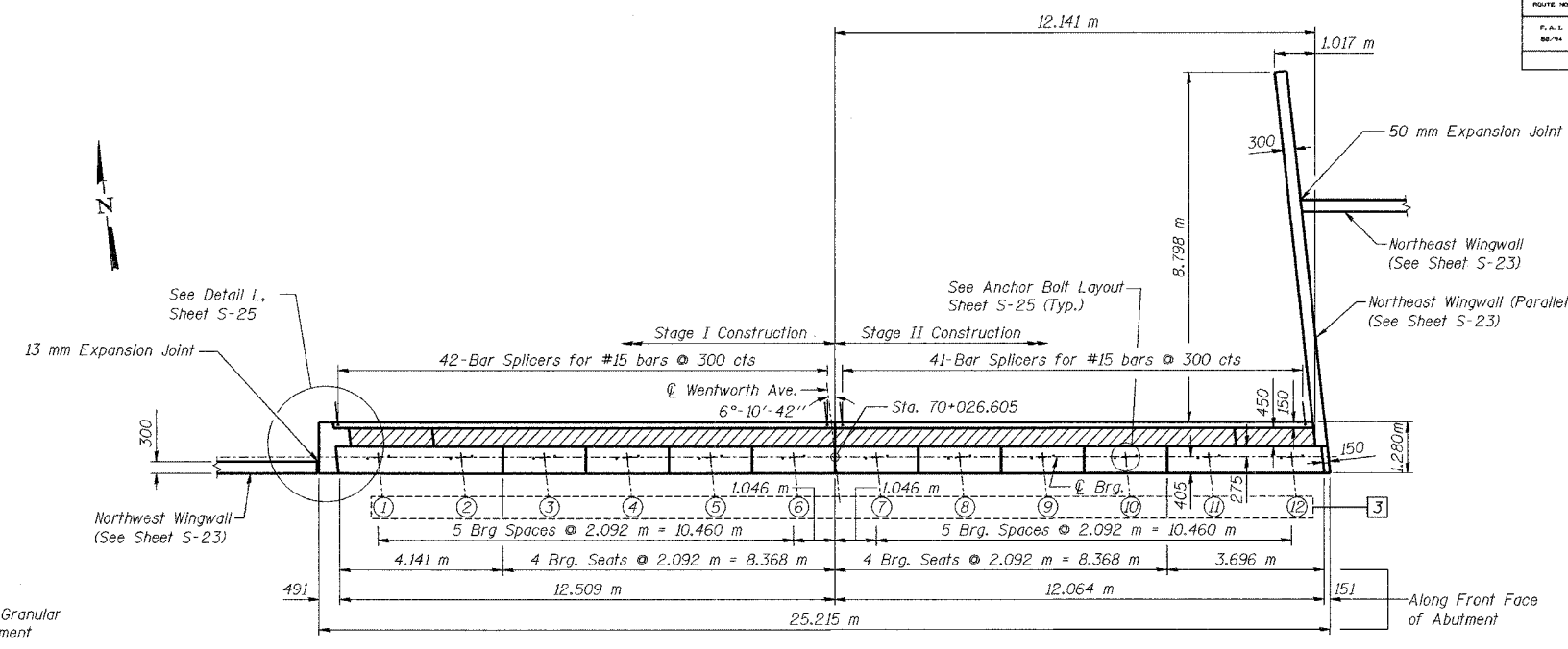
Type - 356 φ Metal Shell
 Capacity - 400 kN
 Est. Length - 14.4 m
 No. Req'd - 217
 Test Piles - 1

DESIGNED	BHS
CHECKED	GSP
DRAWN	BHS
CHECKED	GSP

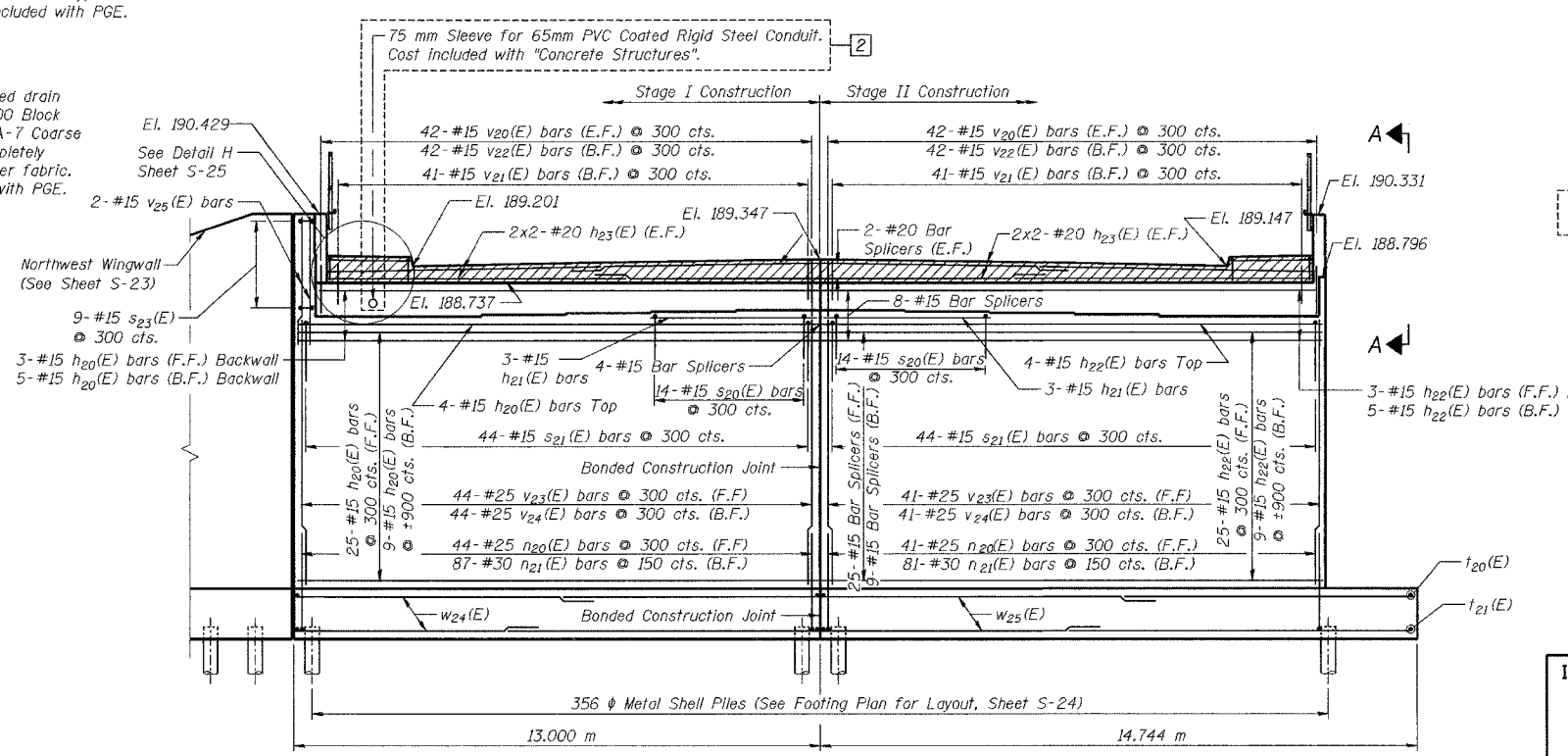
- 3 REVISED 04-12-04 BHS
- 2 REVISED 03-29-04 BHS
- 1 REVISED 09-10-03 KFA

FIGURE NO.	SECTION	COUNTY	SHEET	SHEET NO.
66-74	DETAILED	COOK	1207	566

CONTRACT No. 62114



TOP VIEW



ELEVATION
 (Looking North)

NOTES:

- See Sheets S-24 for Footing Plan.
- See Sheet S-25 for View A-A, Detail G, Detail H, Detail L, and Anchor Bolt Layout.
- See Sheet S-26 for Expansion Joint Detail.
- See Sheet S-28 for Rustication details.
- Hatched area to be poured after superstructure forms have been removed. Quantity of concrete included with "Concrete Superstructure."
- Four steps monolithically with cap.
- Reinforcement bars designated (E) shall be epoxy coated.
- Space reinforcement in cap to miss anchor bolts.
- All edges shall have standard 20 mm chamfers except as noted.
- All dimensions are in millimeters (mm) except as noted.

See Electrical Drawings for location of 65 mm PVC Coated Rigid Steel Conduit.

LEGEND

B.F. = Back Face
 F.F. = Front Face
 E.F. = Each Face

MINIMUM BAR LAPS

#15 bars = 640
 #20 bars = 790
 #25 bars = 1320
 #30 bars = 1850

ILLINOIS DEPARTMENT OF TRANSPORTATION
 F.A.I. ROUTE 80/94 (KINGERY EXPRESSWAY)
 UNDER WENTWORTH AVE
NORTH ABUTMENT PLAN
SECTION 2626.1B
COOK COUNTY
STATION 7+579.488
STRUCTURE NO. 016-2790
 DATE 07/05
AMERICAN
 CONSULTING ENGINEERS

FOR INFORMATION ONLY