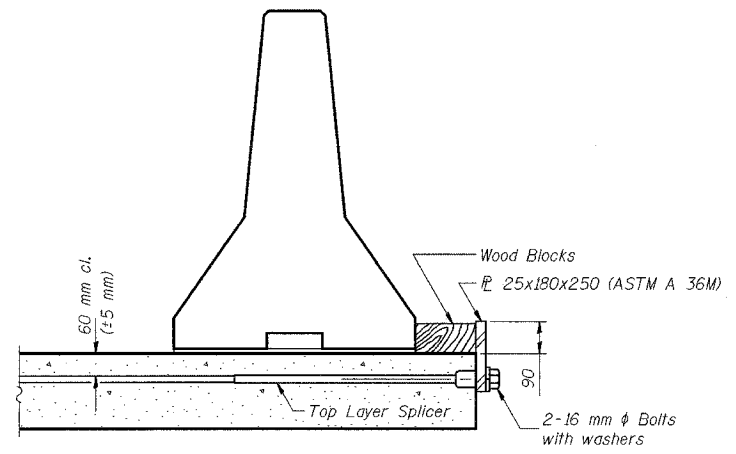
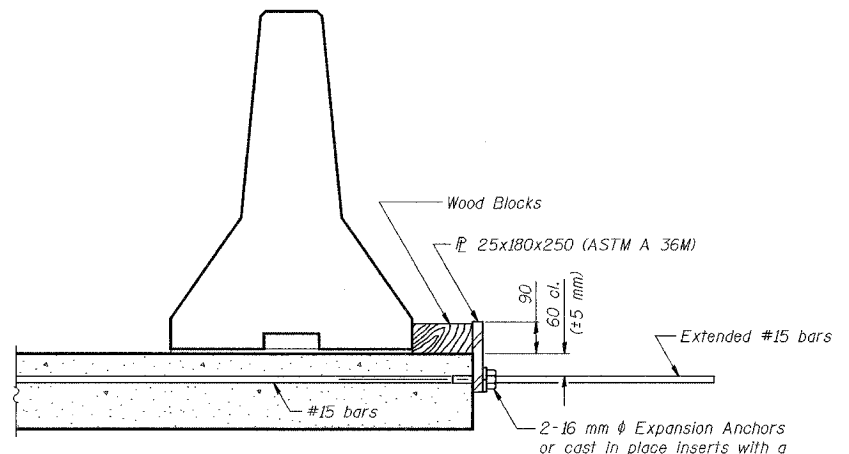


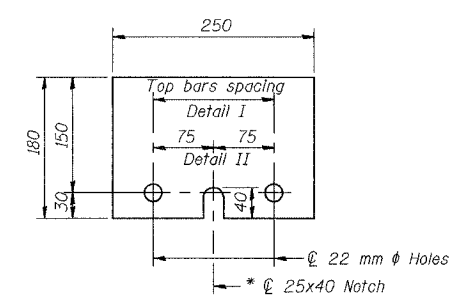
SECTIONS THRU SLAB



DETAIL I
The 25x180x250 Plate shall not be removed until Stage II Construction forms and reinforcement bars are in place.



DETAIL II
The 25x180x250 Plate shall not be removed until Stage II Construction forms and all reinforcement bars are in place and the concrete is ready to be placed.



\square 25x180x250
* Required only with Detail II

NOTES

Detail I - With Bar Splicer or Couplers:
Connect one (1) 25x180x250 steel \square to the top layer of couplers with 2-16 mm ϕ bolts screwed to coupler at approximate ϕ of each barrier panel.

Detail II - With Extended Reinforcement Bars:
Connect one (1) 25x180x250 steel \square to the concrete slab with 2-16 mm ϕ Expansion Anchors or cast in place inserts spaced between the top layer of reinforcement at approximate ϕ of each barrier panel.

Cost of anchorage is included with Temporary Concrete Barrier.
All dimensions are in millimeters (mm) except as noted.

DESIGNED	BHS
CHECKED	KFA
DRAWN	MJB
CHECKED	GSP

R-27 (M)

ILLINOIS DEPARTMENT OF TRANSPORTATION
F.A.L. ROUTE 80/94 (BORMAN EXPRESSWAY)
OVER HOHMAN AVENUE
**TEMPORARY CONCRETE BARRIER
FOR STAGE CONSTRUCTION**
SECTION 2626.2-R-2
LAKE COUNTY, INDIANA
STATION 8+225.132
STRUCTURE NO. I-80-1-8459 (EB & WB)
DATE 09/05 (016-1001 & 016-1002)

AMERICAN
CONSULTING ENGINEERS