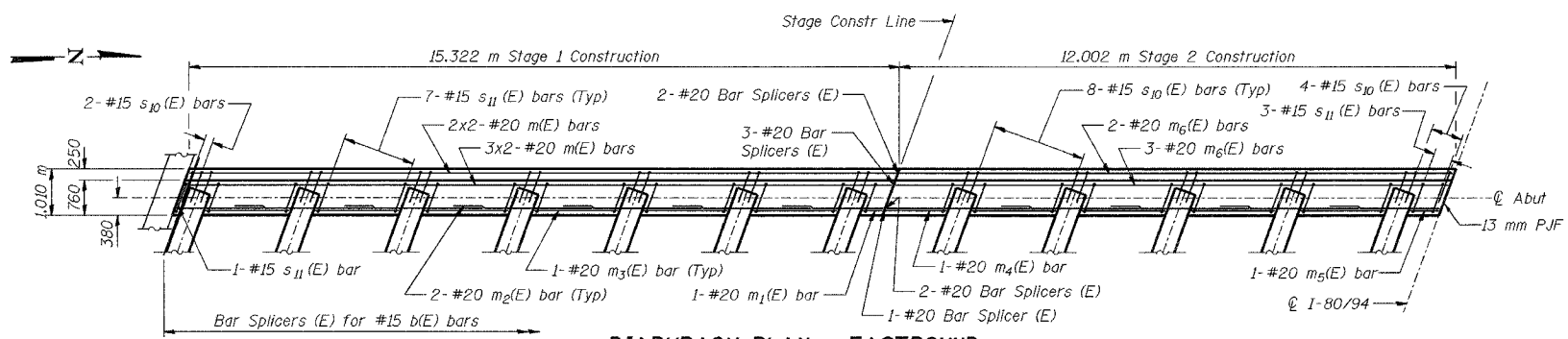
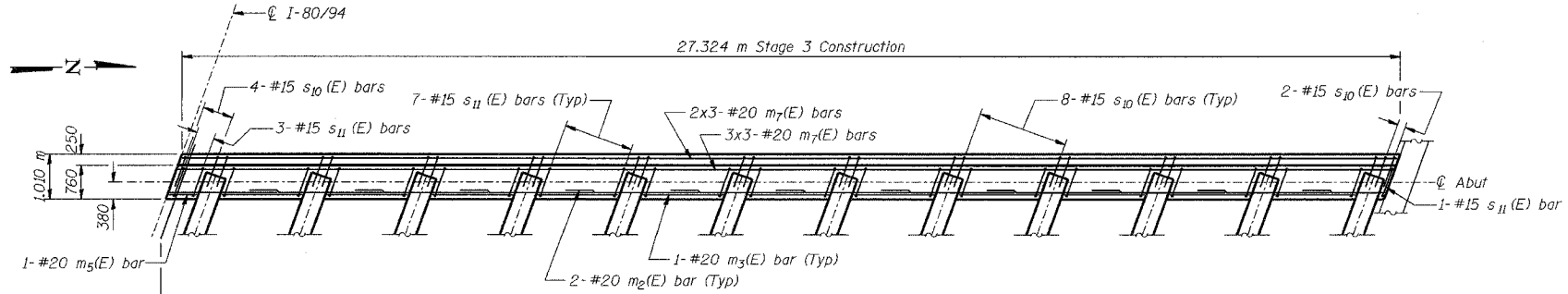


ROUTE NO.	SECTION	COUNTY	SHEETS	SHEET	SHEET NO. S-17
F.A.L.	2626.2-R-2	LAKE COUNTY, INDIANA	1207	596	40 SHEETS
ILLINOIS PROJECT					CONTRACT NO. 62114 INDOT DES. NO. 0100987

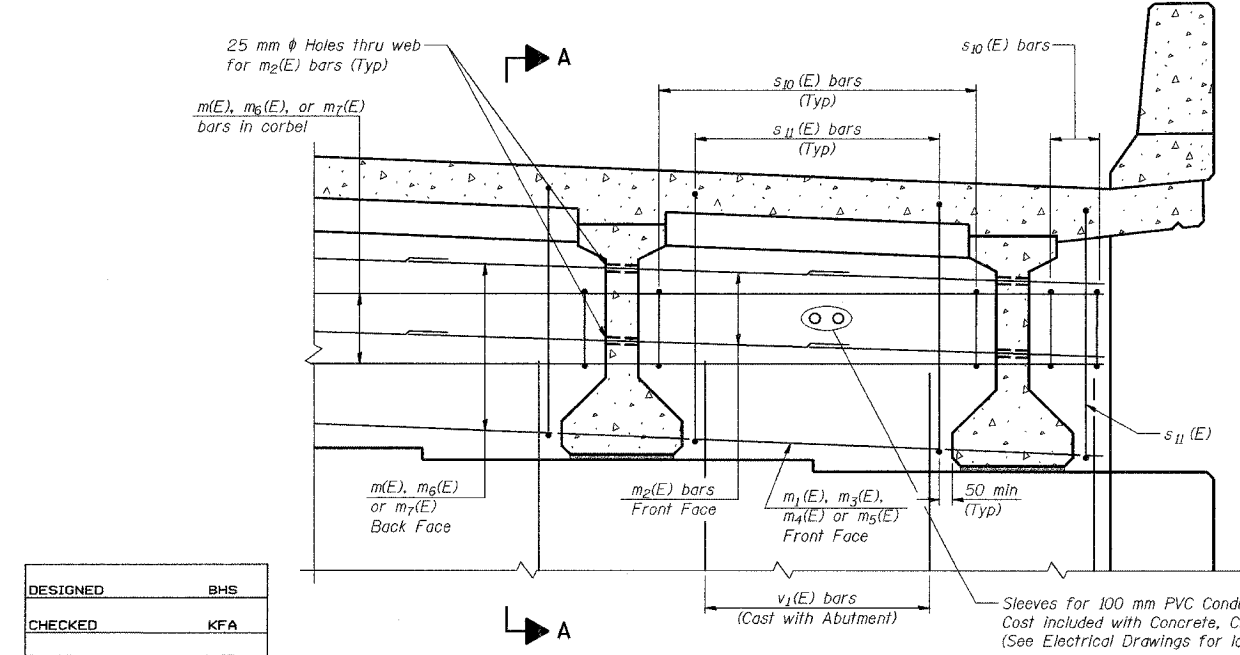


**DIAPHRAGM PLAN - EASTBOUND**  
(West Abutment Shown, East Abutment Similar)

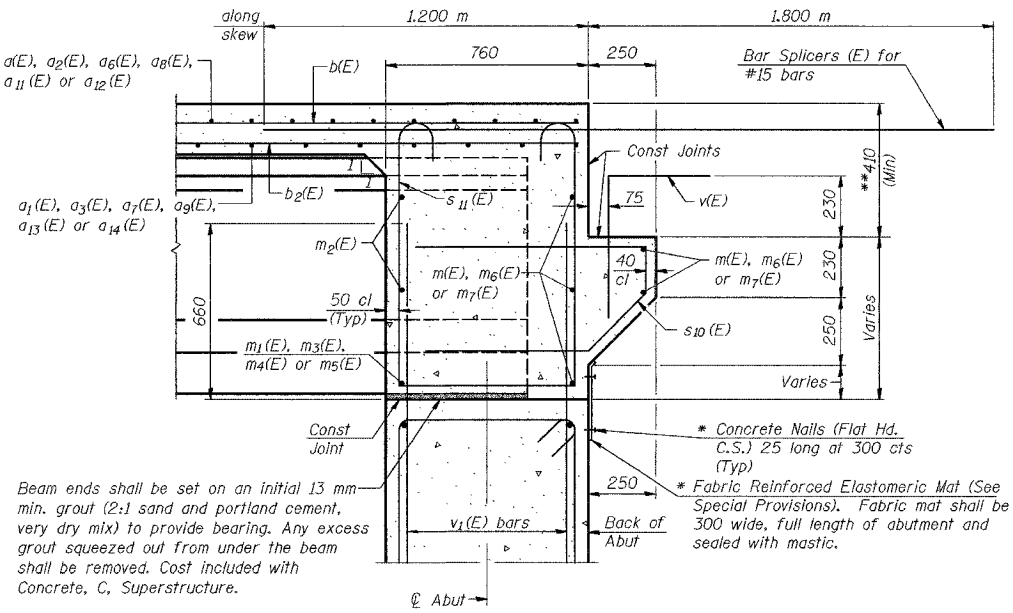


**DIAPHRAGM PLAN - WESTBOUND**  
(West Abutment Shown, East Abutment Similar)

**NOTES:**  
See Sheet No S-21 for reinforcement diagrams and Bill of Material.  
Concrete in diaphragm is included with Concrete, C, Superstructure.  
Cost of 13 mm PJF is included with Concrete, C, Superstructure.  
Reinforcement bars designated (E) shall be epoxy coated.  
All concrete edges shall have a 20 mm chamfer.  
All dimensions are in millimeters (mm) except as noted.



**DIAPHRAGM ELEVATION AT ABUTMENT**



**SECTION A-A**

Beam ends shall be set on an initial 13 mm min. grout (2:1 sand and portland cement, very dry mix) to provide bearing. Any excess grout squeezed out from under the beam shall be removed. Cost included with Concrete, C, Superstructure.

Dimensions at right angles to abutment, except as shown.  
\* Cost included with "Concrete, C, Superstructure".  
\*\* Depth to approach slab seat is 410 mm at the crown of the deck and at the ends of the diaphragm. The seat shall follow a straight slope between the crown and ends of the diaphragm.

**MINIMUM BAR LAP**  
#20 bar = 790

DESIGNED	BHS
CHECKED	KFA
DRAWN	MJB
CHECKED	GSP

ILLINOIS DEPARTMENT OF TRANSPORTATION  
F.A.L. ROUTE 80/94 (BORMAN EXPRESSWAY)  
OVER HOBMAN AVENUE

**DIAPHRAGM AT ABUTMENTS**  
**SECTION 2626.2-R-2**  
**LAKE COUNTY, INDIANA**  
**STATION 8+225.132**  
**STRUCTURE NO. I-80-1-8459 (EB & WB)**  
DATE 09/05 (016-1001 & 016-1002)

**AMERICAN**  
CONSULTING ENGINEERS