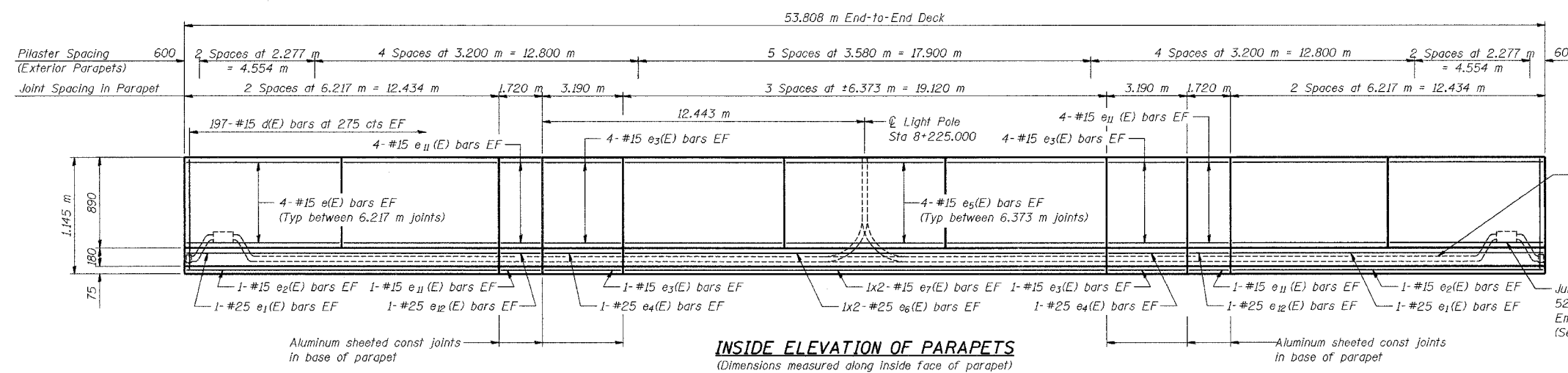
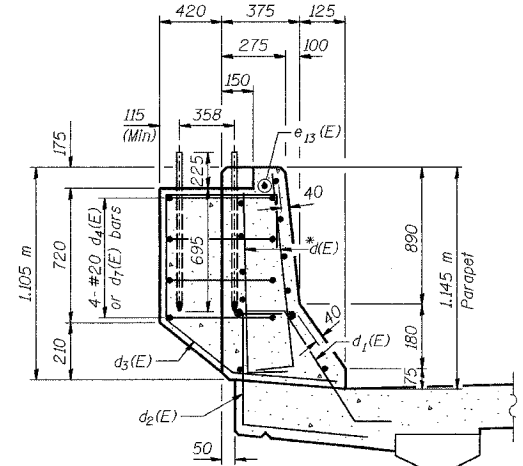


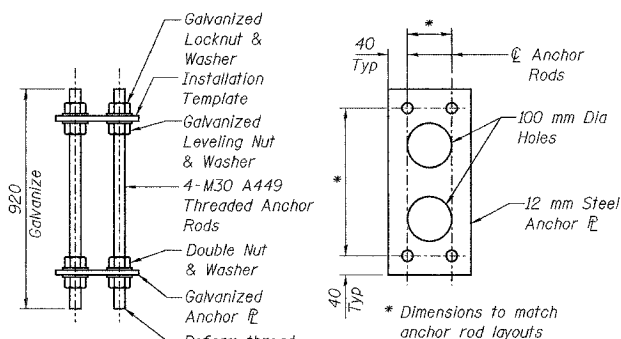
ROUTE NO.	SECTION	COUNTY	SHEET	SHEET NO. S-20
F.A.L. 80/94	2626.2-R-2	LAKE COUNTY, INDIANA	1207	599
CONTRACT NO. 62114				INDOT DES. NO. 0100987
SHEETS				40 SHEETS



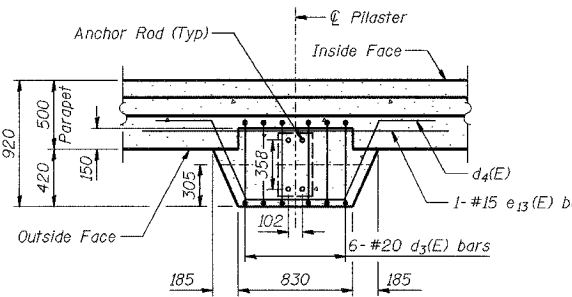
**INSIDE ELEVATION OF PARAPETS**  
(Dimensions measured along inside face of parapet)



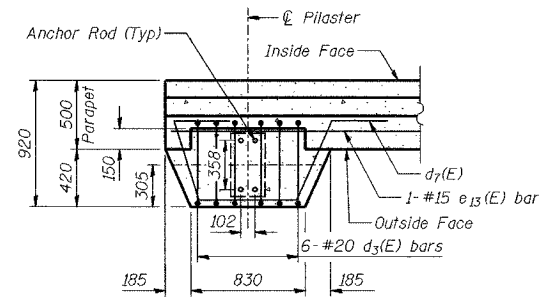
**NOISEWALL PILASTER DETAIL**  
\*Cut d(E) bar on Back Face to fit.



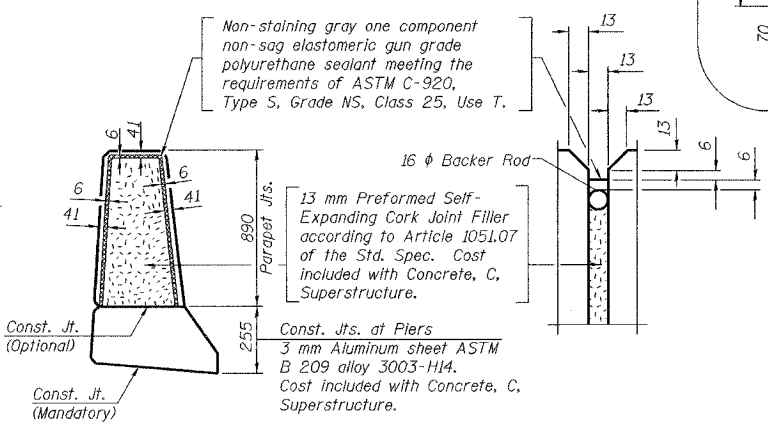
**NOISE ABATEMENT WALL ANCHOR ROD ASSEMBLY**  
(36 Req'd)



**TYPICAL PILASTER SUPPORT - PLAN VIEW**  
(Reinforcement in Parapet not shown)  
(1 Noise Abatement Wall Anchor Rod Assembly per Pilaster)  
(32 Pilasters Req'd)



**PILASTER SUPPORT AT END OF PARAPET - PLAN VIEW**  
(Reinforcement in Parapet not shown)  
(1 Noise Abatement Wall Anchor Rod Assembly per Pilaster)  
(4 Pilasters Req'd)

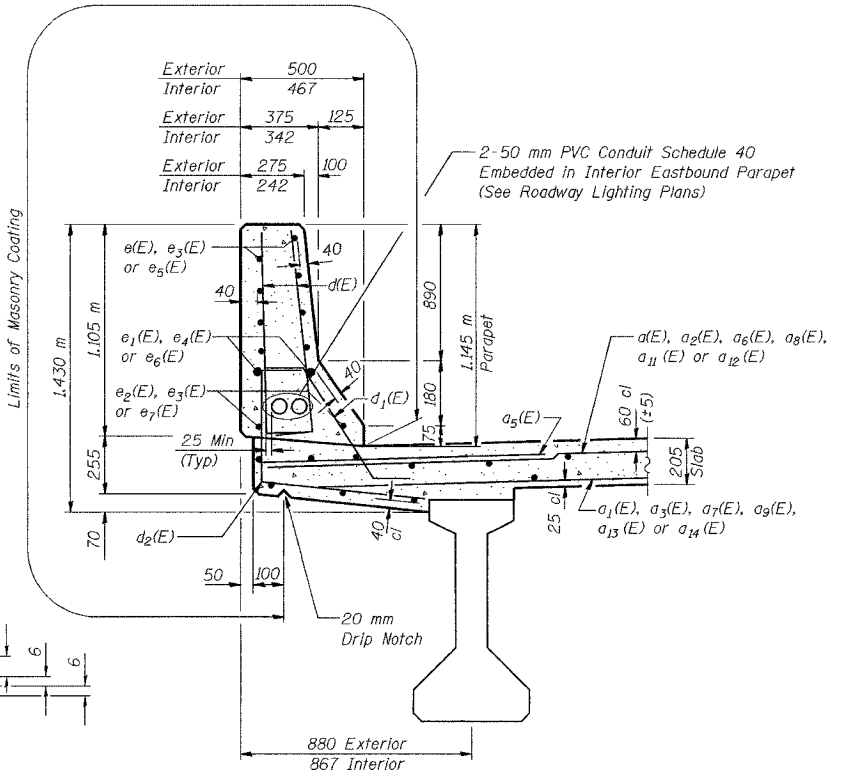


**PARAPET JOINT DETAILS**

**MINIMUM BAR LAPS**

#15 = 640

#25 = 1.320 m



**SECTION THRU PARAPETS**  
All concrete edges shall have a 20 mm chamfer.

DESIGNED	BHS
CHECKED	KFA
DRAWN	MJB
CHECKED	GSP

**LEGEND**  
EF - Each Face

**NOTES:**

See Sheet No S-21 for bar diagrams and Bill of Material.

Reinforcement bars designated (E) shall be epoxy coated.

Bars indicated thus 20 x 3-#15 etc. indicates 20 lines of bars with 3 lengths per line.

All dimensions are in millimeters (mm) except as noted.

ILLINOIS DEPARTMENT OF TRANSPORTATION  
F.A.L. ROUTE 80/94 (BORMAN EXPRESSWAY)  
OVER HOHMAN AVENUE

PARAPET ELEVATIONS  
SECTION 2626.2-R-2  
LAKE COUNTY, INDIANA  
STATION 8 + 225.132  
STRUCTURE NO. I-80-1-8459 (EB & WB)  
DATE 09/05 (016-1001 & 016-1002)

**AMERICAN**  
CONSULTING ENGINEERS