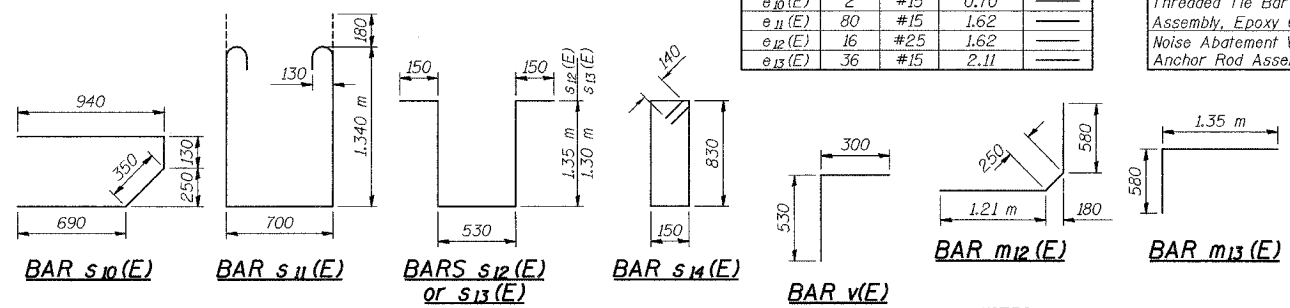
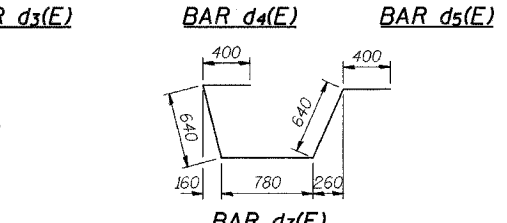
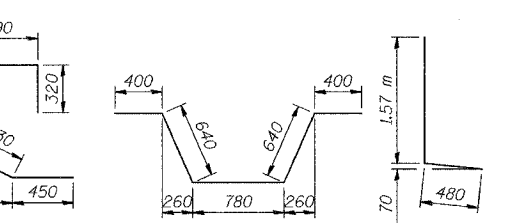
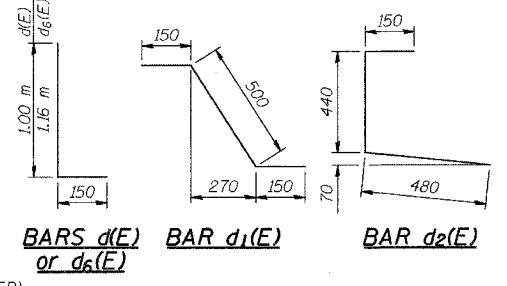
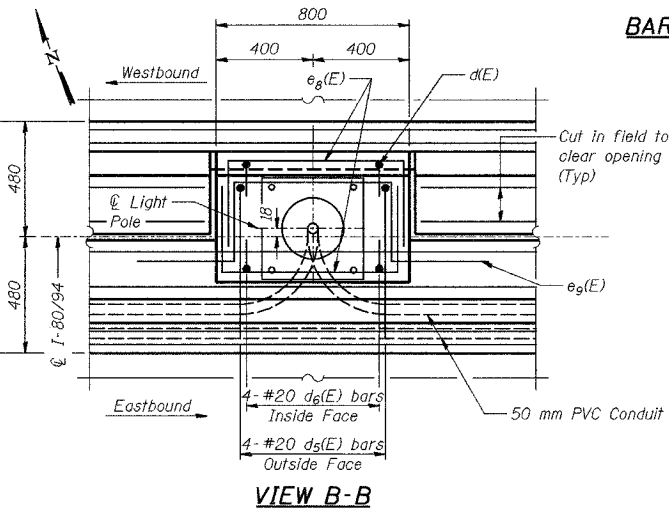
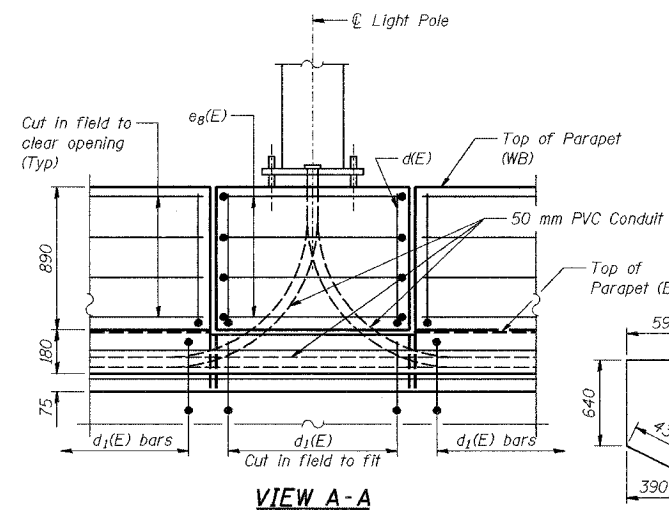
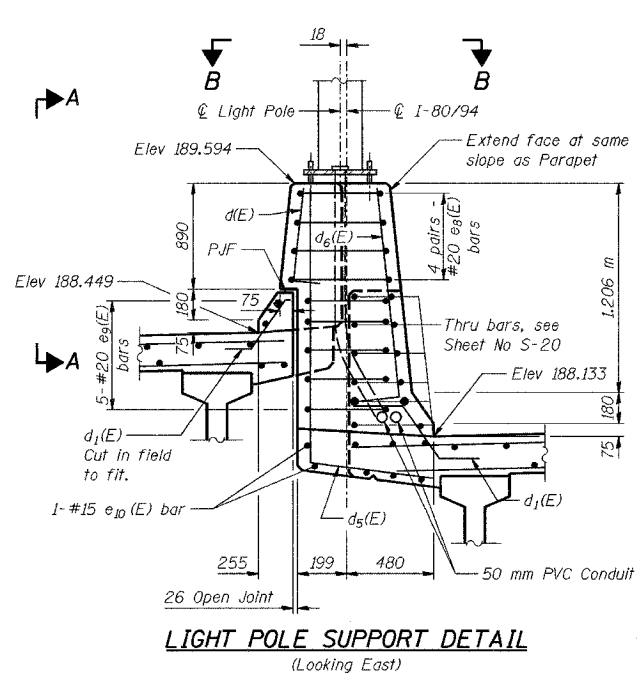
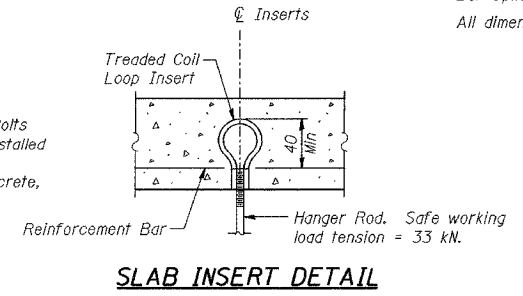
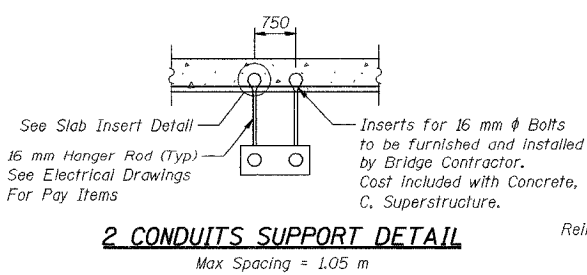


SUPERSTRUCTURE BILL OF MATERIAL

Bar	No.	Size	Length (m)	Shape
d(E)	243	#15	14.75	—
a ₁ (E)	195	#15	14.65	—
a ₂ (E)	26	#15	14.82	—
a ₃ (E)	20	#15	14.95	—
a ₄ (E)	8	#15	8.12	—
a ₅ (E)	540	#20	1.37	—
a ₆ (E)	249	#15	11.13	—
a ₇ (E)	200	#15	11.03	—
a ₈ (E)	19	#15	11.32	—
a ₉ (E)	15	#15	11.41	—
a ₁₀ (E)	4	#15	11.73	—
a ₁₁ (E)	492	#15	13.31	—
a ₁₂ (E)	46	#15	13.62	—
a ₁₃ (E)	606	#15	9.02	—
a ₁₄ (E)	36	#15	9.96	—
a ₁₅ (E)	12	#15	9.57	—
b(E)	1098	#15	9.49	—
b ₁ (E)	352	#25	10.94	—
b ₂ (E)	1008	#15	8.23	—
d(E)	1576	#15	1.15	—
d ₁ (E)	788	#15	0.80	—
d ₂ (E)	788	#15	1.07	—
d ₃ (E)	216	#20	2.43	—
d ₄ (E)	128	#20	2.86	—
d ₅ (E)	4	#20	2.05	—
d ₆ (E)	4	#20	1.31	—
d ₇ (E)	16	#20	2.86	—
e(E)	128	#15	6.11	—
e ₁ (E)	16	#25	12.33	—
e ₂ (E)	16	#15	12.33	—
e ₃ (E)	80	#15	3.09	—
e ₄ (E)	16	#25	3.09	—
e ₅ (E)	96	#15	6.27	—
e ₆ (E)	16	#25	10.17	—
e ₇ (E)	16	#15	9.83	—
e ₈ (E)	8	#20	1.60	—
e ₉ (E)	5	#20	2.60	—
e ₁₀ (E)	2	#15	0.70	—
e ₁₁ (E)	80	#15	1.62	—
e ₁₂ (E)	16	#25	1.62	—
e ₁₃ (E)	36	#15	2.11	—
m(E)	20	#20	8.01	—
m ₁ (E)	2	#20	0.34	—
m ₂ (E)	96	#20	3.21	—
m ₃ (E)	42	#20	1.66	—
m ₄ (E)	2	#20	1.22	—
m ₅ (E)	4	#20	0.53	—
m ₆ (E)	10	#20	11.90	—
m ₇ (E)	30	#20	9.61	—
m ₈ (E)	924	#15	2.05	—
m ₉ (E)	88	#20	1.66	—
m ₁₀ (E)	40	#25	1.80	—
m ₁₁ (E)	8	#25	0.90	—
m ₁₂ (E)	440	#15	2.04	—
m ₁₃ (E)	440	#15	1.93	—
m ₁₄ (E)	600	#15	1.59	—
s ₁₀ (E)	376	#15	2.11	—
s ₁₁ (E)	324	#15	3.74	—
s ₁₂ (E)	154	#15	3.53	—
s ₁₃ (E)	154	#15	3.43	—
s ₁₄ (E)	770	#15	2.24	—
v(E)	342	#15	0.83	—
Concrete, C. Superstructure		m ³	938.1	
Surface Seal (Estimated)		m ²	3,040	
Reinforcing Bars, Epoxy Coated		kg	117,310	
Threaded Tie Bar Assembly, Epoxy Coated		Each	844	
Noise Abatement Wall Anchor Rod Assembly		Each	36	



DESIGNED	BHS
CHECKED	KFA
DRAWN	MJB
CHECKED	GSP



NOTES:
 Reinforcement bars designated (E) shall be epoxy coated.
 All concrete edges shall have a 20 mm chamfer.
 Bar Splicers paid for as "Threaded Tie Bar Assembly, Epoxy Coated."
 All dimensions are in millimeters (mm) except as noted.

ILLINOIS DEPARTMENT OF TRANSPORTATION
 F.A.L. ROUTE 80/94 (BORMAN EXPRESSWAY)
 OVER HOHMAN AVENUE

SUPERSTRUCTURE DETAILS
 SECTION 266.2-R-2
 LAKE COUNTY, INDIANA
 STATION 8+225.132
 STRUCTURE NO. I-80-1-8459 (EB & WB)
 DATE 09/05 (016-1001 & 016-1002)

AMERICAN
 CONSULTING ENGINEERS