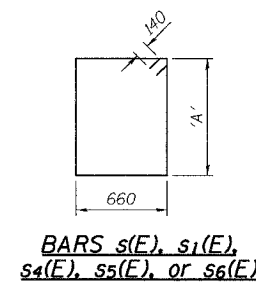
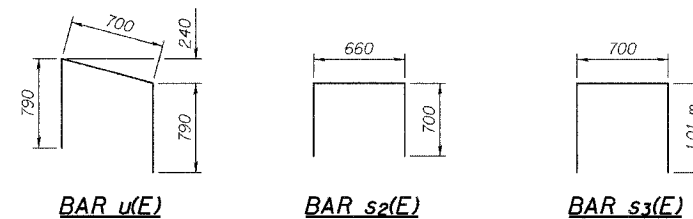


**WEST ABUTMENT  
BILL OF MATERIAL**

Bar	No.	Size	Length (m)	Shape
p(E)	12	#30	8.54	—
p <sub>1</sub> (E)	6	#30	11.90	—
p <sub>2</sub> (E)	3	#15	9.05	—
p <sub>3</sub> (E)	9	#15	5.37	—
p <sub>4</sub> (E)	3	#15	2.83	—
p <sub>5</sub> (E)	18	#30	10.31	—
p <sub>6</sub> (E)	3	#15	6.98	—
p <sub>7</sub> (E)	3	#15	7.62	—
s(E)	43	#15	3.88	□
s <sub>1</sub> (E)	33	#15	3.68	□
s <sub>2</sub> (E)	138	#15	2.06	□
s <sub>3</sub> (E)	8	#15	2.72	□
s <sub>4</sub> (E)	76	#15	3.62	□
u(E)	13	#20	2.28	∩
v <sub>1</sub> (E)	370	#15	1.32	—
Excavation, Foundation, Unclassified			m <sup>3</sup>	132
Structure Backfill			m <sup>3</sup>	308
Test Pile			Each	1
Pile, Concrete, Steel Shell Encased, 6.35 mm, 356 mm			m	442.0
Concrete, A, Substructure			m <sup>3</sup>	56.3
Reinforcing Bars, Epoxy Coated			kg	4,380
Threaded Tie Bar Assembly, Epoxy Coated			Each	6
Slopedwall, Concrete, 100 mm			m <sup>2</sup>	928

**EAST ABUTMENT  
BILL OF MATERIAL**

Bar	No.	Size	Length (m)	Shape
p(E)	12	#30	8.54	—
p <sub>1</sub> (E)	6	#30	11.90	—
p <sub>2</sub> (E)	3	#15	9.05	—
p <sub>3</sub> (E)	9	#15	5.37	—
p <sub>4</sub> (E)	3	#15	2.83	—
p <sub>5</sub> (E)	18	#30	10.31	—
p <sub>6</sub> (E)	3	#15	6.98	—
p <sub>7</sub> (E)	3	#15	7.62	—
s <sub>2</sub> (E)	138	#15	2.06	□
s <sub>3</sub> (E)	8	#15	2.72	□
s <sub>4</sub> (E)	33	#15	3.62	□
s <sub>5</sub> (E)	43	#15	3.86	□
s <sub>6</sub> (E)	76	#15	3.78	□
u(E)	13	#20	2.28	∩
v <sub>1</sub> (E)	370	#15	1.32	—
Excavation, Foundation, Unclassified			m <sup>3</sup>	338
Structure Backfill			m <sup>3</sup>	315
Test Pile			Each	1
Pile, Concrete, Steel Shell Encased, 6.35 mm, 356 mm			m	410.0
Concrete, A, Substructure			m <sup>3</sup>	57.9
Reinforcing Bars, Epoxy Coated			kg	4,390
Threaded Tie Bar Assembly, Epoxy Coated			Each	6
Slopedwall, Concrete, 100 mm			m <sup>2</sup>	928



**BAR DIMENSIONS**

Bar	'A'
s(E)	1.14 m
s <sub>1</sub> (E)	1.04 m
s <sub>4</sub> (E)	1.01 m
s <sub>5</sub> (E)	1.13 m
s <sub>6</sub> (E)	1.09 m

DESIGNED	BHS
CHECKED	KFA
DRAWN	MJB
CHECKED	GSP

**NOTES:**  
Reinforcement bars designated (E) shall be epoxy coated.  
All dimensions are in millimeters (mm) except as noted.

ILLINOIS DEPARTMENT OF TRANSPORTATION  
F.A.L. ROUTE 80/94 (BORMAN EXPRESSWAY)  
OVER HOHMAN AVENUE

**ABUTMENT DETAILS  
SECTION 2626.2-R-2  
LAKE COUNTY, INDIANA  
STATION 8+225.132  
STRUCTURE NO. I-80-1-8459 (EB & WB)  
DATE 09/05 (016-1001 & 016-1002)**

**AMERICAN**  
CONSULTING ENGINEERS