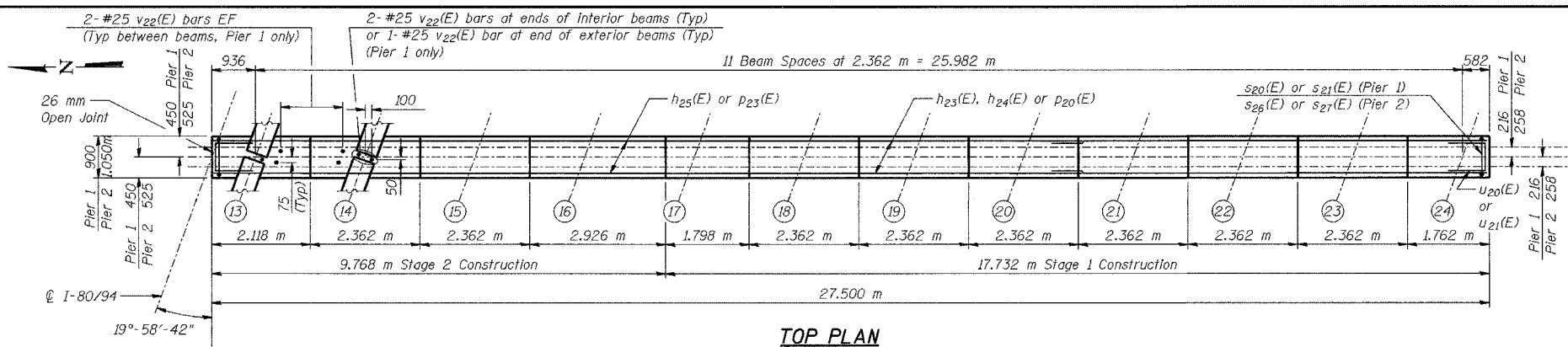
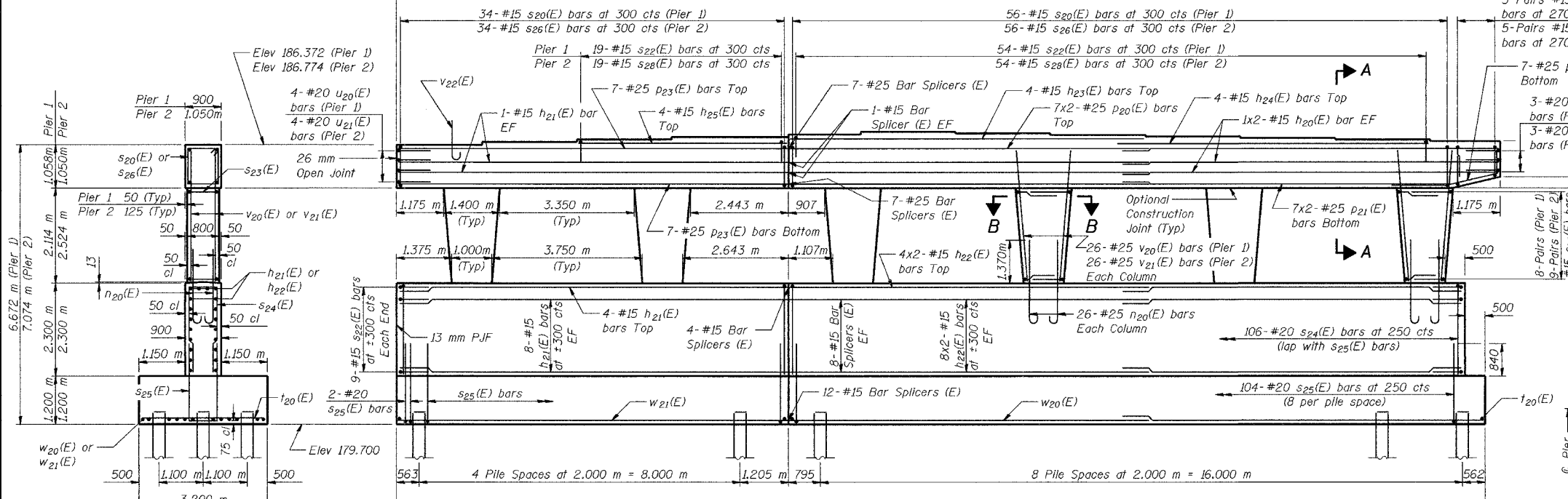


BEARING SEAT ELEVATIONS

| Beam | Pier 1 | Pier 2 |
|------|---------|---------|
| 13 | 186.372 | 186.774 |
| 14 | 186.444 | 186.846 |
| 15 | 186.510 | 186.912 |
| 16 | 186.571 | 186.973 |
| 17 | 186.622 | 187.023 |
| 18 | 186.651 | 187.052 |
| 19 | 186.631 | 187.032 |
| 20 | 186.610 | 187.011 |
| 21 | 186.581 | 186.983 |
| 22 | 186.542 | 186.944 |
| 23 | 186.503 | 186.905 |
| 24 | 186.464 | 186.866 |



TOP PLAN



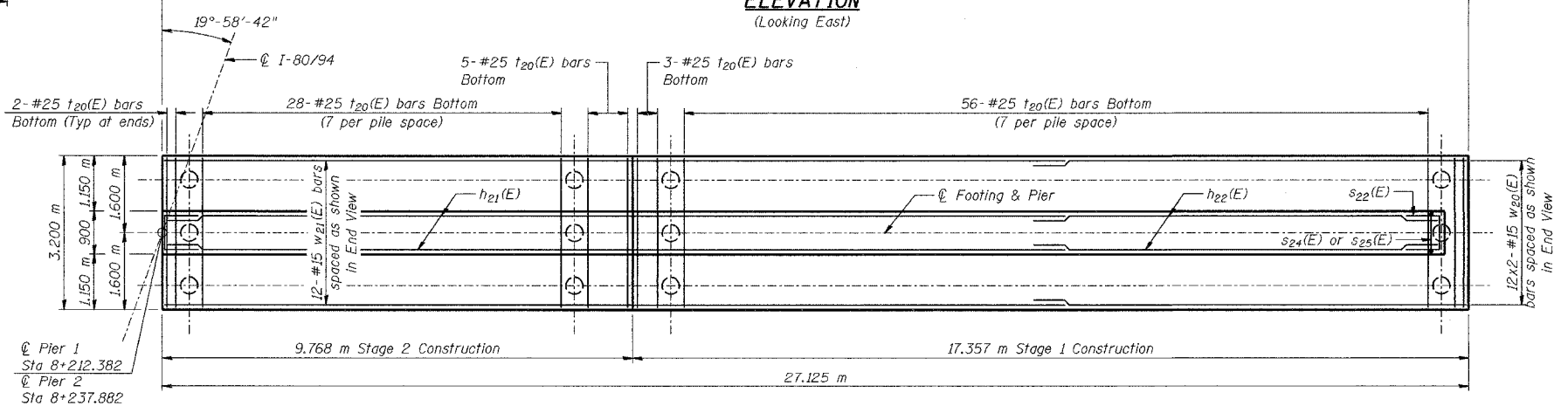
ELEVATION (Looking East)

PILE DATA

PIER 1
 Type - 356 ϕ Metal Shell
 Capacity - 500 kN
 Est Length - 15.7 m
 No Req'd - 41
 Test Piles - 1

PIER 2
 Type - 356 ϕ Metal Shell
 Capacity - 500 kN
 Est Length - 14.1 m
 No Req'd - 41
 Test Piles - 1

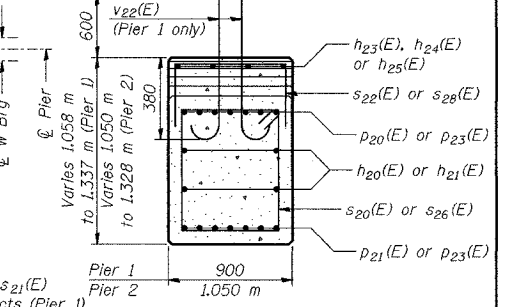
| | |
|----------|-----|
| DESIGNED | BHS |
| CHECKED | KFA |
| DRAWN | MJB |
| CHECKED | GSP |



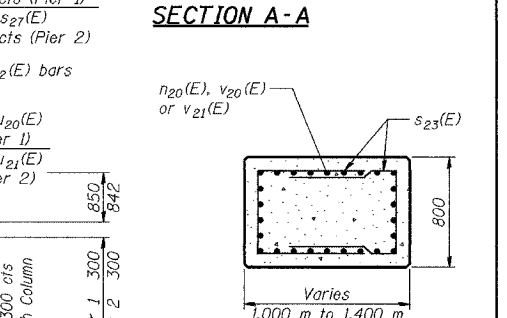
FOOTING PLAN

| | | | | | |
|-----------|------------|----------------------|--------|-------|----------------|
| ROUTE NO. | SECTION | COUNTY | SHEETS | SHEET | SHEET NO. S-32 |
| 88/94 | 2626.2-R-2 | LAKE COUNTY, INDIANA | 1207 | 611 | 40 SHEETS |

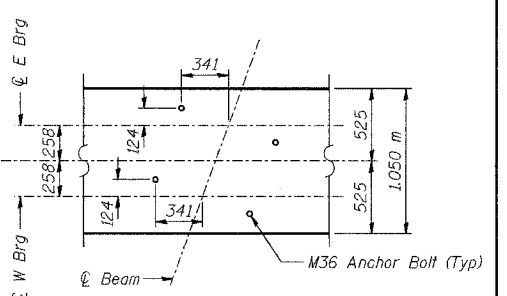
CONTRACT NO. 62114 INDOT DES. NO. 0100987



SECTION A-A



SECTION B-B



ANCHOR BOLT LAYOUT (Pier 2)

NOTES:
 See Sheet No S-19 for Anchor Bolt Layout for Pier 1.
 See Sheet No S-33 for Bill of Material.
 Space reinforcement in cap to miss dowel bars.
 Pour steps monolithically with cap.
 Reinforcement bars designated (E) shall be epoxy coated.
 Bars indicated thus 20 x 3-#15 etc. indicates 20 lines of bars with 3 lengths per line.
 All dimensions are in millimeters (mm) except as noted.

ILLINOIS DEPARTMENT OF TRANSPORTATION
 F.A.I. ROUTE 80/94 (BORMAN EXPRESSWAY)
 OVER HOHMAN AVENUE

PIERS 1 AND 2 - EASTBOUND
SECTION 2626.2-R-2
 LAKE COUNTY, INDIANA
 STATION 8+225.132
STRUCTURE NO. I-80-1-8459 (EB & WB)
 DATE 09/05 (016-1001 & 016-1002)

AMERICAN CONSULTING ENGINEERS

MINIMUM BAR LAPS
 #15 bars = 640
 #20 bars = 790
 #25 bars = 1320

LEGEND
 EF - Each Face