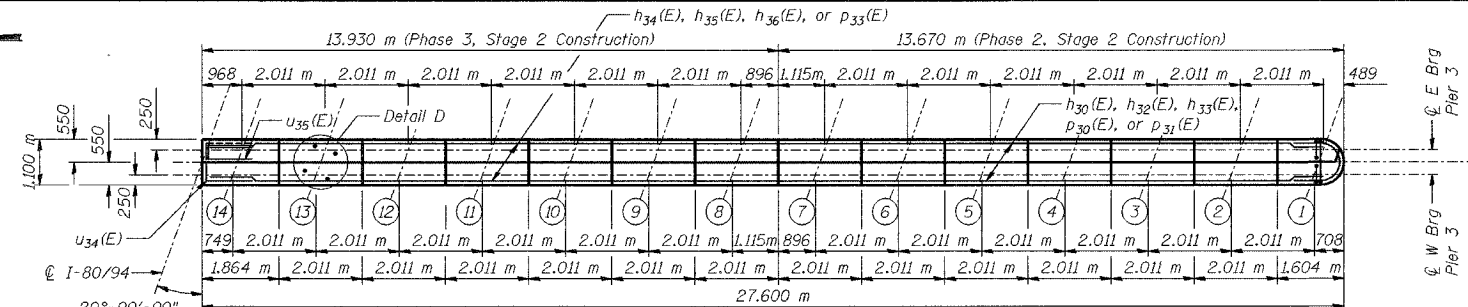
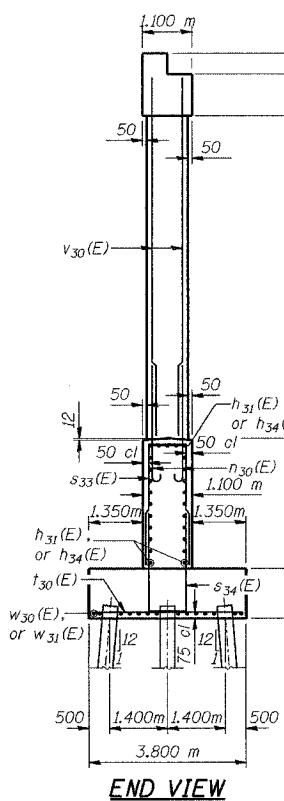


**BEARING SEAT ELEVATIONS**

Girder or Beam	Pier 3 - W Brg	Pier 3 - E Brg
14	190.132	190.641
13	190.179	190.687
12	190.225	190.733
11	190.271	190.779
10	190.317	190.825
9	190.364	190.871
8	190.410	190.918
7	190.456	190.964
6	190.502	191.010
5	190.548	191.055
4	190.594	191.101
3	190.639	191.147
2	190.685	191.193
1	190.731	191.239



**TOP PLAN**



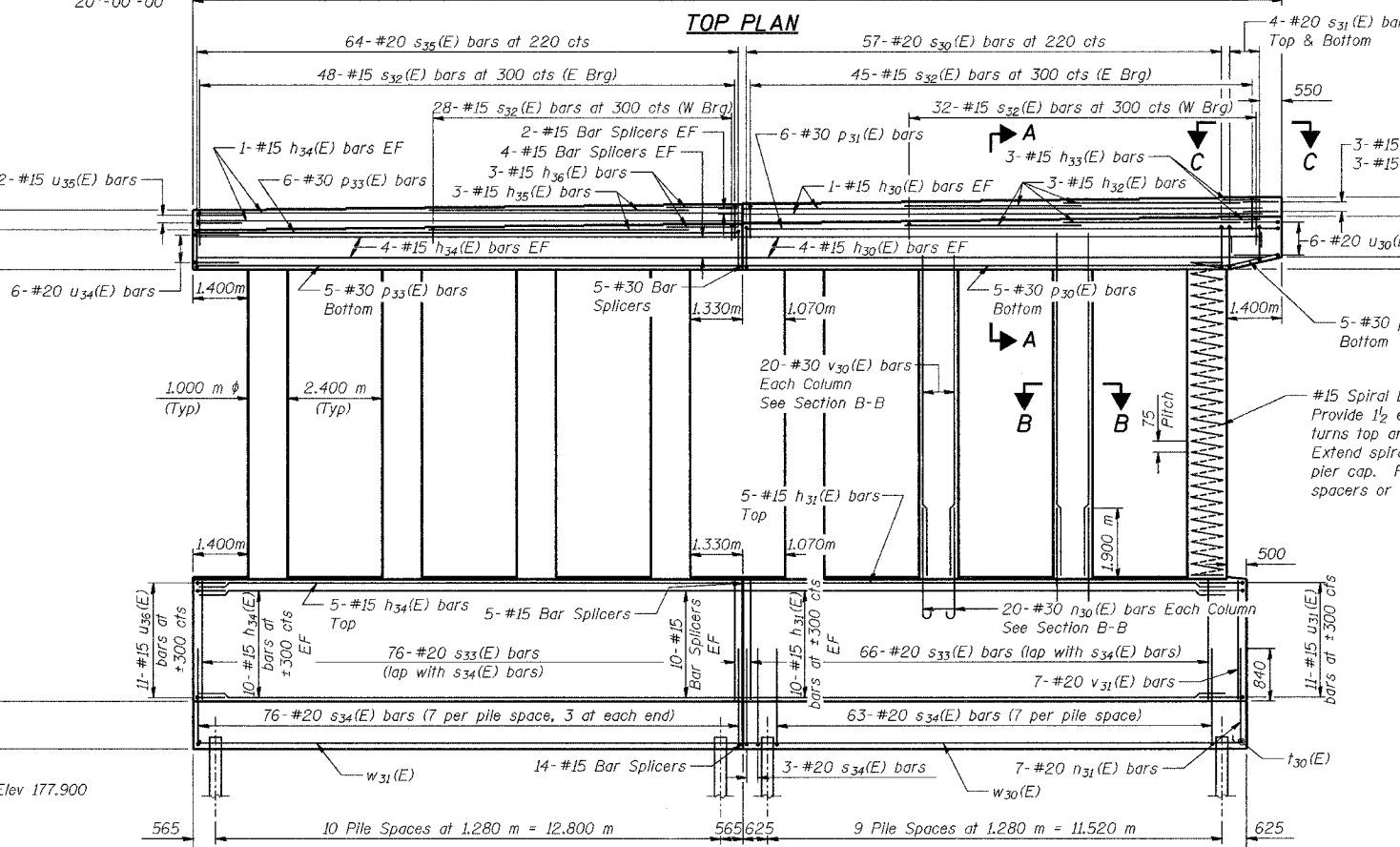
**END VIEW**

**PILE DATA**

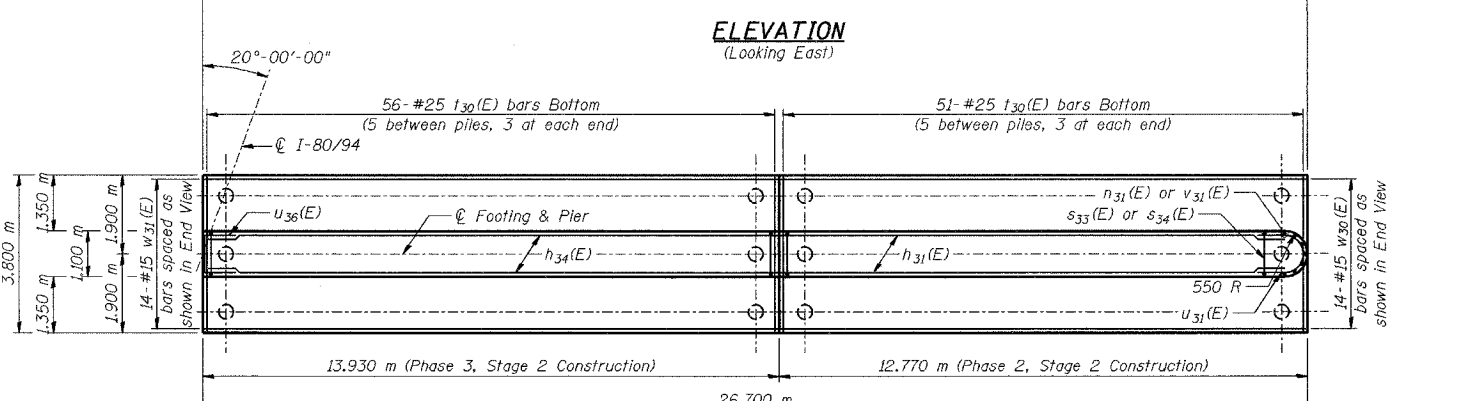
Type - 356  $\phi$  Metal Shell  
 Capacity - 500 kN  
 Est Length - 13.4 m  
 No Reqd - 62 Total\*  
 Test Piles - 1

\* Phase 2, Stage 2: 29 for Pier 3  
 Phase 3, Stage 2: 33 for Pier 3

DESIGNED	BHS
CHECKED	KFA
DRAWN	MJB
CHECKED	GSP



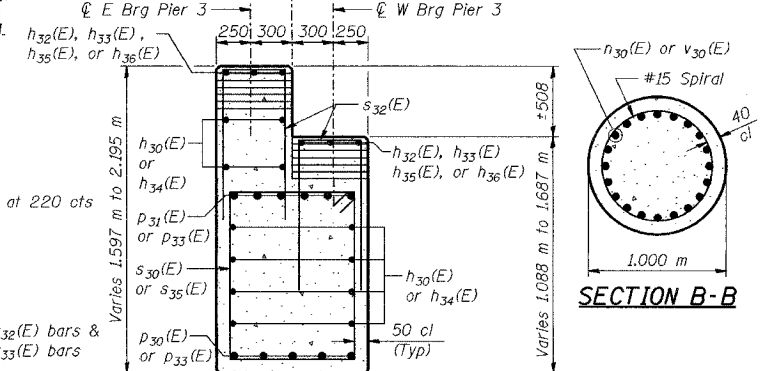
**ELEVATION**  
(Looking East)



**FOOTING PLAN**

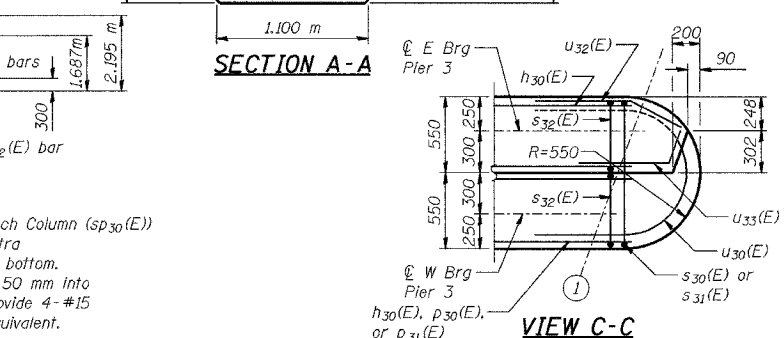
ROUTE NO.	SECTION	COUNTY	DATE	SHEET	SHEET NO. S-56
F.A.L. 80/94	2626.2-R-1	LAKE COUNTY, INDIANA	1207	675	72 SHEETS

CONTRACT NO. 62114 INDOT DES. NO. 0100987

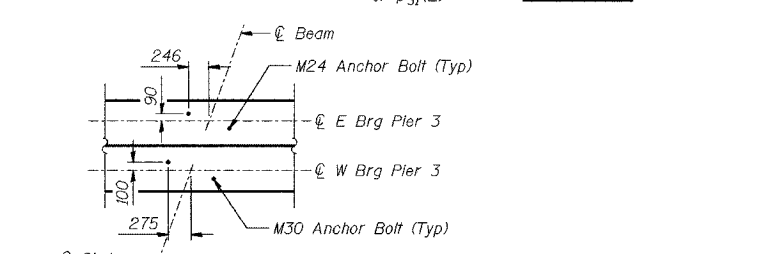


**SECTION A-A**

**SECTION B-B**



**VIEW C-C**



**DETAIL D ANCHOR BOLT LAYOUT**

**NOTES:**  
 See Sheet No S-60 for Bill of Material.  
 Space reinforcement in cap to miss anchor bolts.  
 Pour steps monolithically with cap.  
 Reinforcement bars designated (E) shall be epoxy coated.  
 All dimensions are in millimeters (mm) except as noted.  
 Apply Surface Seal to top surface of bearing seat and vertical faces of steps.

**LEGEND**

EF - Each Face

**MINIMUM BAR LAPS**

- #15 bars = 640
- #20 bars = 790
- #25 bars = 1320
- #30 bars = 1850

ILLINOIS DEPARTMENT OF TRANSPORTATION  
 F.A.L. ROUTE 80/94 (BORMAN EXPRESSWAY)  
 OVER LITTLE CALUMET RIVER & N.I.C.T.D. R.O.W.

**PIER 3 - EASTBOUND**  
**SECTION 2626.2-R-1**  
**LAKE COUNTY, INDIANA**  
**STATION 8+470.000**  
**STRUCTURE NO. I-80-1-8460 (EB & WB)**  
 DATE 07/05 (016-1003 & 016-1004)

**AMERICAN**  
 CONSULTING ENGINEERS

**PHASE 2 FOR INFORMATION ONLY**