

**BORING NO. AB-16 (2 OF 2)**

**BORING NO. AB-17 (1 OF 3)**

**BORING NO. AB-17 (2 OF 3)**

**W** Wang Engineering, INC.  
 Consulting Geotechnical and Environmental Engineers  
 wangeng@wangeng.com  
 100 Fairbank Street  
 Addison, IL 60101  
 Telephone: 630 458-0700  
 Fax: 630 458-0900

**BORING LOG AB-16**  
 WEI Job No.: 255-08-01  
 Datum: NGVD  
 Elevation: 180.43 m  
 North: 545267.58 m  
 East: 367886.08 m  
 Station: 8+486.95  
 Offset: 0.54 LT

Client: American Consulting Engineers  
 Project: FAI 80/94, I-294 to US 41  
 Location: s13 T36N R10W & s29 R15E T36N

Page 2 of 2

**W** Wang Engineering, INC.  
 Consulting Geotechnical and Environmental Engineers  
 wangeng@wangeng.com  
 100 Fairbank Street  
 Addison, IL 60101  
 Telephone: 630 458-0700  
 Fax: 630 458-0900

**BORING LOG AB-17**  
 WEI Job No.: 255-08-01  
 Datum: NGVD  
 Elevation: 191.12 m  
 North: 545266.08 m  
 East: 367829.44 m  
 Station: 8+434.07  
 Offset: 19.82 RT

Client: American Consulting Engineers  
 Project: FAI 80/94, I-294 to US 41  
 Location: s13 T36N R10W & s29 R15E T36N

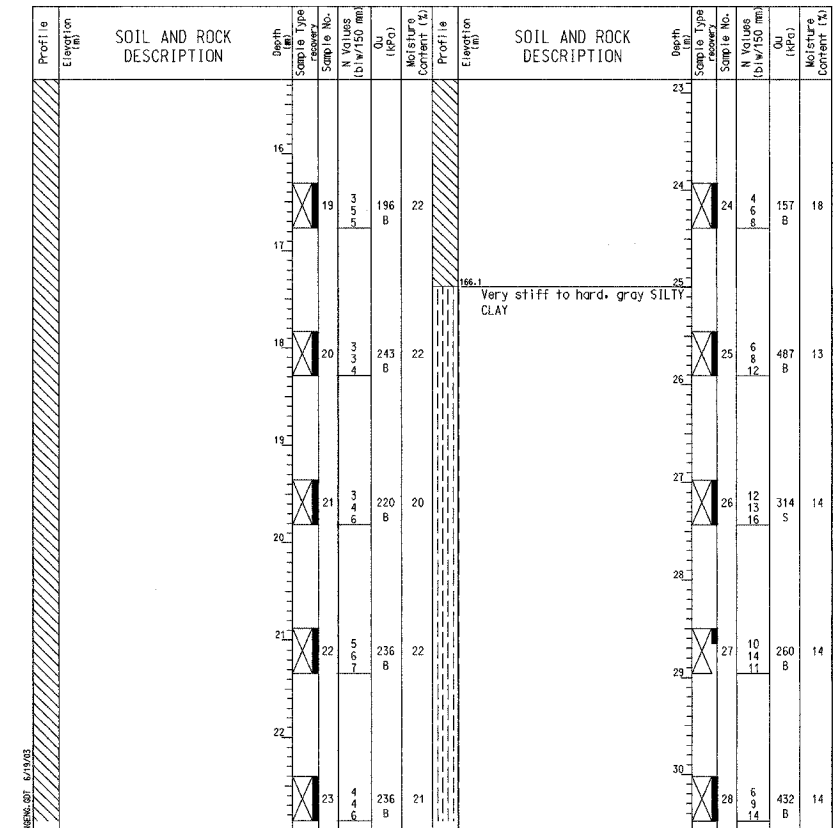
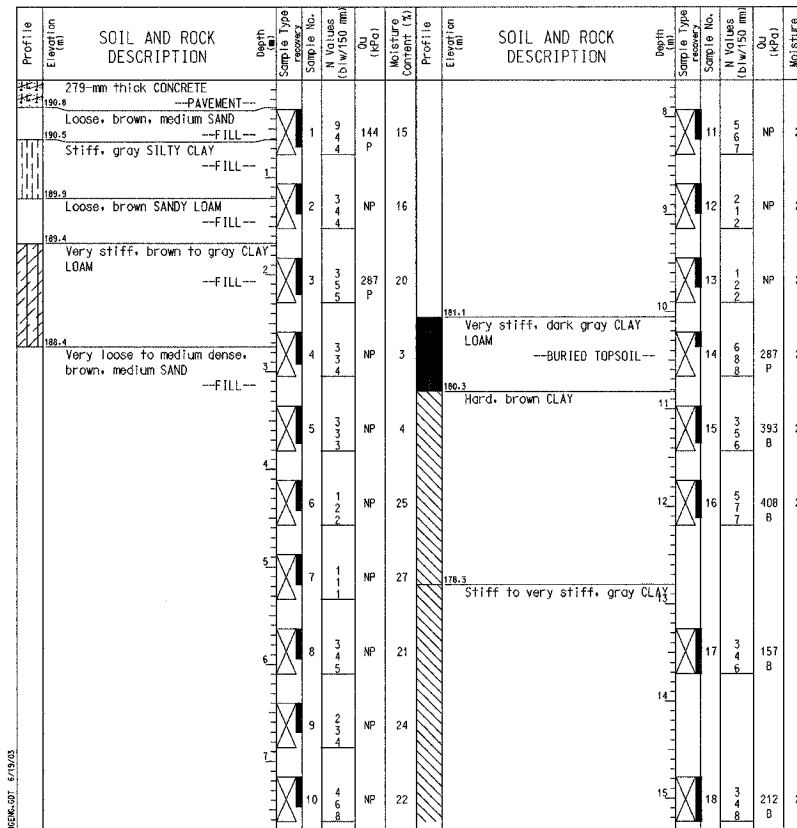
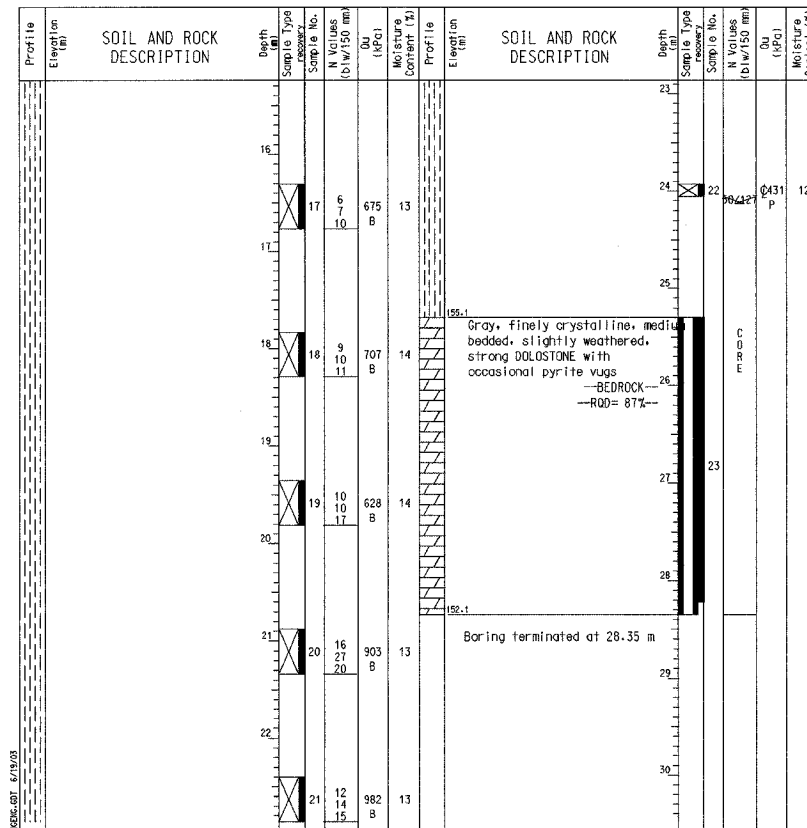
Page 1 of 3

**W** Wang Engineering, INC.  
 Consulting Geotechnical and Environmental Engineers  
 wangeng@wangeng.com  
 100 Fairbank Street  
 Addison, IL 60101  
 Telephone: 630 458-0700  
 Fax: 630 458-0900

**BORING LOG AB-17**  
 WEI Job No.: 255-08-01  
 Datum: NGVD  
 Elevation: 191.12 m  
 North: 545266.08 m  
 East: 367829.44 m  
 Station: 8+434.07  
 Offset: 19.82 RT

Client: American Consulting Engineers  
 Project: FAI 80/94, I-294 to US 41  
 Location: s13 T36N R10W & s29 R15E T36N

Page 2 of 3



**GENERAL NOTES**  
 Begin Drilling 01-07-2002 Complete Drilling 01-07-2002  
 Drilling Contractor TSC Drill Rig B-61  
 Driller GAD Logger B. Fugiel checked by B. Fugiel  
 Drilling Method Mud Rotary; Grouted after final water reading

**WATER LEVEL DATA**  
 While Drilling  2.67 m  
 At Completion of Drilling  2.44 m  
 Time After Drilling 24 hours  
 Depth to Water  2.13 m  
 The stratification lines represent the approximate boundary between soil types; the actual transition may be gradual.

**GENERAL NOTES**  
 Begin Drilling 01-24-2002 Complete Drilling 01-25-2002  
 Drilling Contractor TSC Drill Rig CME 75  
 Driller C&J Logger B. Fugiel checked by N. Davis  
 Drilling Method Mud Rotary; Grouted upon completion

**WATER LEVEL DATA**  
 While Drilling  -  
 At Completion of Drilling  -  
 Time After Drilling - hours  
 Depth to Water  m  
 The stratification lines represent the approximate boundary between soil types; the actual transition may be gradual.

**GENERAL NOTES**  
 Begin Drilling 01-24-2002 Complete Drilling 01-25-2002  
 Drilling Contractor TSC Drill Rig CME 75  
 Driller C&J Logger B. Fugiel checked by N. Davis  
 Drilling Method Mud Rotary; Grouted upon completion

**WATER LEVEL DATA**  
 While Drilling  -  
 At Completion of Drilling  -  
 Time After Drilling - hours  
 Depth to Water  m  
 The stratification lines represent the approximate boundary between soil types; the actual transition may be gradual.

DESIGNED	BHS
CHECKED	KFA
DRAWN	CAK/MJB
CHECKED	GSP

ILLINOIS DEPARTMENT OF TRANSPORTATION  
 F.A.I. ROUTE 80/94 (BORMAN EXPRESSWAY)  
 OVER LITTLE CALUMET RIVER & N.I.C.T.D. R.O.W.

**BORING LOGS (4 OF 10)**  
**SECTION 2626.2-R-1**  
**LAKE COUNTY, INDIANA**  
**STATION 8+470.000**  
**STRUCTURE NO. I-80-1-8460 (EB & WB)**  
 DATE 07/05 (016-1003 & 016-1004)

**AMERICAN**  
 CONSULTING ENGINEERS