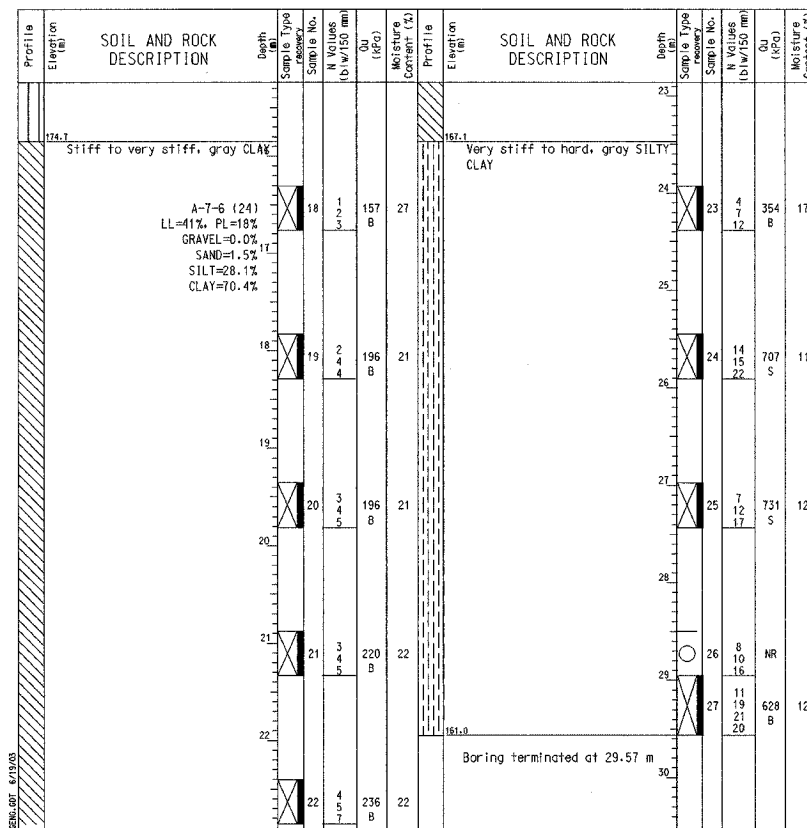


BORING NO. AB-24 (2 OF 2)

<p>Wang Engineering, INC. Consulting, Geotechnical and Environmental Engineers wangeng@wangeng.com 100 Fairbank Street Addison, IL 60101 Telephone: 630 458-0700 Fax: 630 458-0900</p>	BORING LOG AB-24		Page 2 of 2
	WEI Job No.: 255-08-01		Datum: NGVD
	Client: American Consulting Engineers		Elevation: 190.57 m
	Project: FAI 80/94, I-294 to US 41		North: 545209.11 m
Location: s13 T36N R10W & s29 R15E T36N		East: 367989.76 m	Station: 8+604.21
		Offset: 19.89 RT	



GENERAL NOTES		WATER LEVEL DATA	
Begin Drilling 01-23-2002	Complete Drilling 01-23-2002	While Drilling	-
Drilling Contractor TSC	Drill Rig CME 75	At Completion of Drilling	-
Driller C&J	Logger B. Fugiel	Time After Drilling	- hours
Checked by N. Davis		Depth to Water	7 m
Drilling Method Mud Rotary; Grouted upon completion		The stratification lines represent the approximate boundary between soil types; the actual transition may be gradual.	

DESIGNED	BHS
CHECKED	KFA
DRAWN	CAKMJB
CHECKED	GSP

ILLINOIS DEPARTMENT OF TRANSPORTATION
F.A.I. ROUTE 80/94 (BORMAN EXPRESSWAY)
OVER LITTLE CALUMET RIVER & N.I.C.T.D. R.O.W.

BORING LOGS (10 OF 10)
SECTION 2626.2-R-1
LAKE COUNTY, INDIANA
STATION 8+470.000
STRUCTURE NO. I-80-1-8460 (EB & WB)
DATE 07/05 (016-1003 & 016-1004)

AMERICAN
CONSULTING ENGINEERS