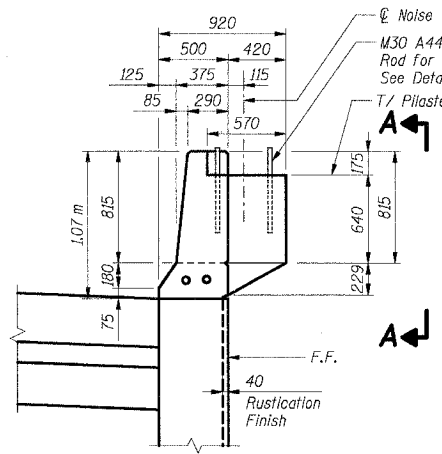
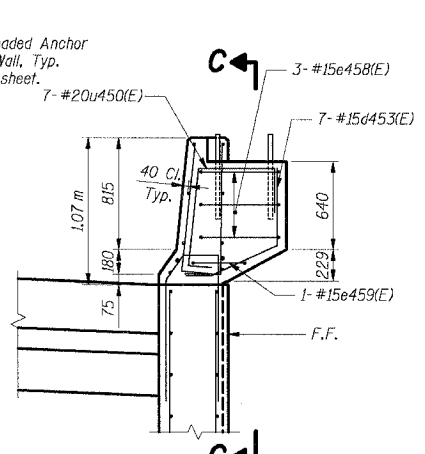


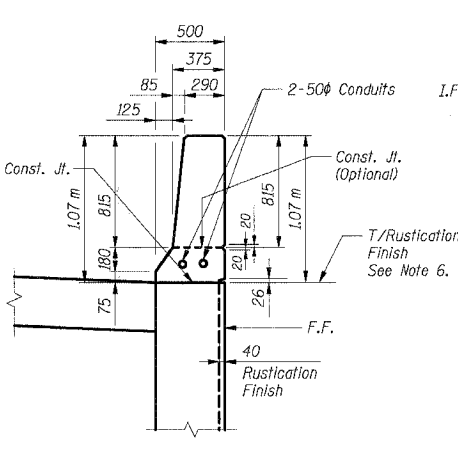
F.A.I. RTE.	SECTION	COUNTY	TOTAL SHEETS	SHEET NO.
80/94	2626.2-R-2	COOK	1207	782
STA.	TO STA.			
FED. ROAD DIST. NO.	ILLINOIS	FED. AID PROJECT		
CONTRACT NO. 62114				



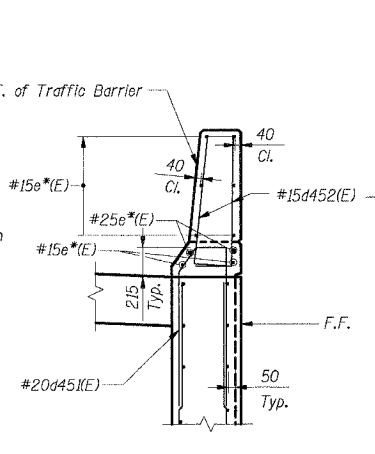
TRAFFIC BARRIER W/PILASTER



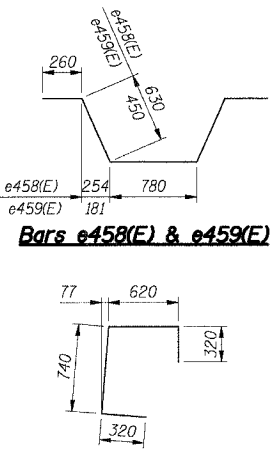
TRAFFIC BARRIER W/PILASTER
(Showing Reinforcement)



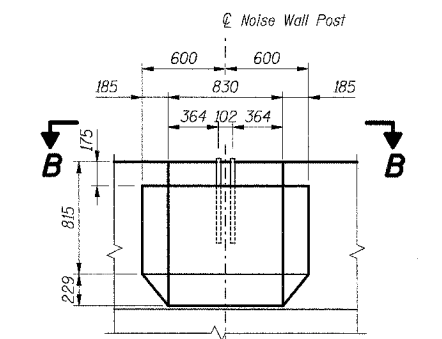
TYPICAL TRAFFIC BARRIER SECTION



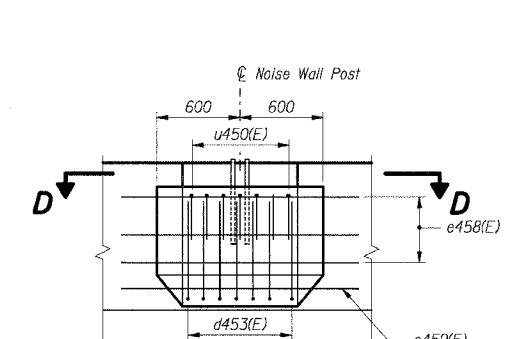
TYPICAL TRAFFIC BARRIER SECTION
(Showing Reinforcement)



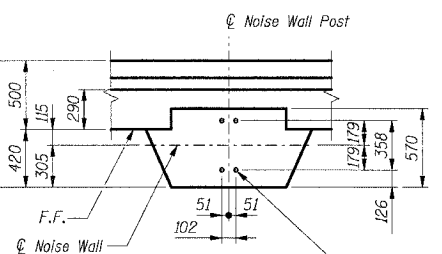
Bar u450(E)



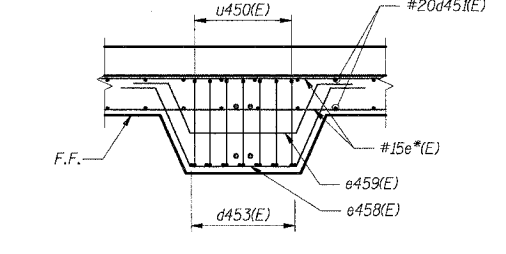
ELEVATION A-A



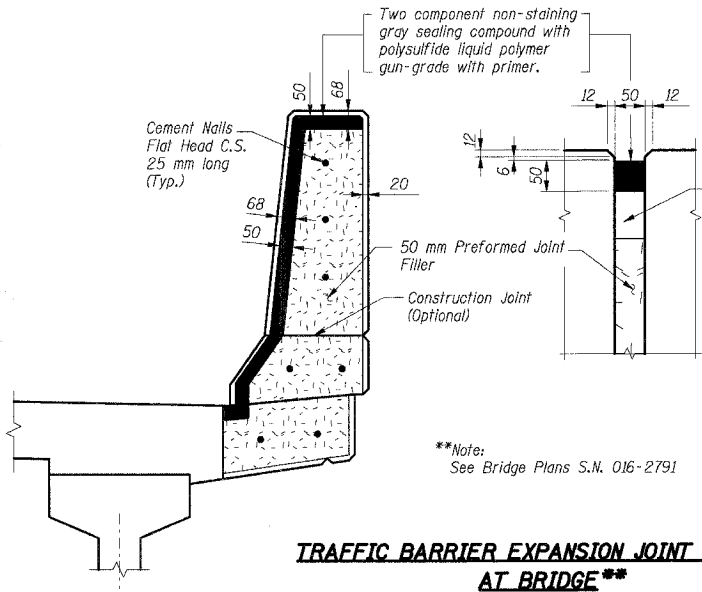
SECTION C-C



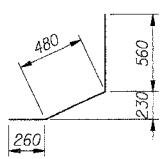
PLAN B-B



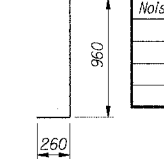
SECTION D-D



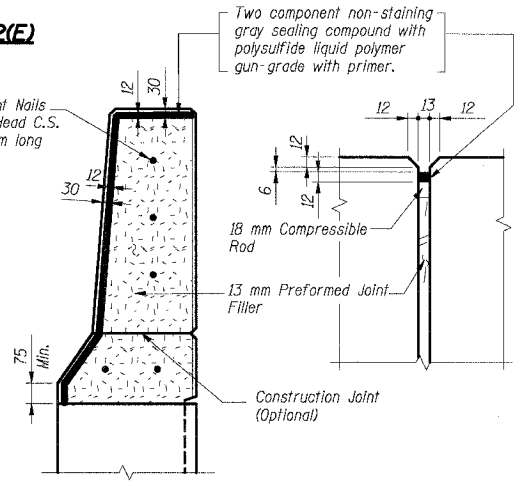
TRAFFIC BARRIER EXPANSION JOINT DETAIL AT BRIDGE**



Bar d453(E)

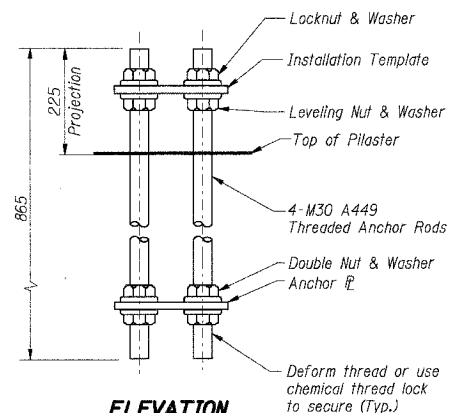


Bar d452(E)



TYPICAL TRAFFIC BARRIER EXPANSION JOINT DETAIL

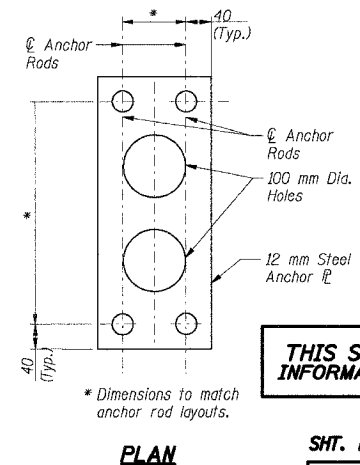
Cost of joint sealant, P.J.F. and cement nails are included with Concrete Structures.



ELEVATION

Note: Entire anchor rod assembly shall be hot dip galvanized.

NOISE ABATEMENT WALL ANCHOR ROD ASSEMBLY
(13 Required)



PLAN

THIS SHEET FOR INFORMATION ONLY

SHT. RW852-10 OF 14

REVISIONS	
NAME	DATE

- Notes:
- All dimensions are in millimeters (mm) except as noted.
 - Reinforcement bars designated (E) shall be epoxy coated.
 - All edges shall have a 20 mm chamfer unless noted otherwise.
 - E.F. indicates each face. B.F. indicates back face. F.F. indicates front face.
 - *Indicates for location of bars, identification and quantity, see Footing Plans & Wall Elevations.
 - For Rustication Finish details, see Sht. RW852-12.

ILLINOIS DEPARTMENT OF TRANSPORTATION
F.A.I. ROUTE 80/94 (KINGERY EXPRESSWAY)
EB & WB OUTSIDE LANES (MAINLINE) CONSTRUCTION
RETAINING WALL - STRUCTURE NO. 016-W852
SECTION (2625 & 2626) R-1
COOK COUNTY

TRAFFIC BARRIER SECTIONS & DETAILS

DATE: 8/18/2004

DRAWN BY: CHECKED BY: MJK

TENG

TENG & ASSOCIATES, INC.
ENGINEERS/ARCHITECTS/PLANNERS
CHICAGO, ILLINOIS

Shah Engineering, Inc.
ONE IBM PLAZA SUITE 3000
CHICAGO, IL 60611
TELE 312/836-9000
Consulting Engineers

T:\DOCUMENTS\9971501\STRUCT\ADON\RSIB24024.DGN
 7-11-2005, 13:35:20
 1, 2, 3, 4, 5, 6, 7, 8, 9, 10, 11, 12, 13, 14, 15, 16, 17, 18, 19, 20, 21, 22, 23, 24, 25, 26, 27, 28, 29, 30, 31, 32, 33, 34, 35, 36, 37, 38, 39, 40, 41, 42, 43, 44, 45, 46, 47, 48, 49, 50, 51, 52, 53, 54, 55, 56, 57, 58, 59, 60, 61, 62, 63
 BAUZEKJ