

**GENERAL NOTES**

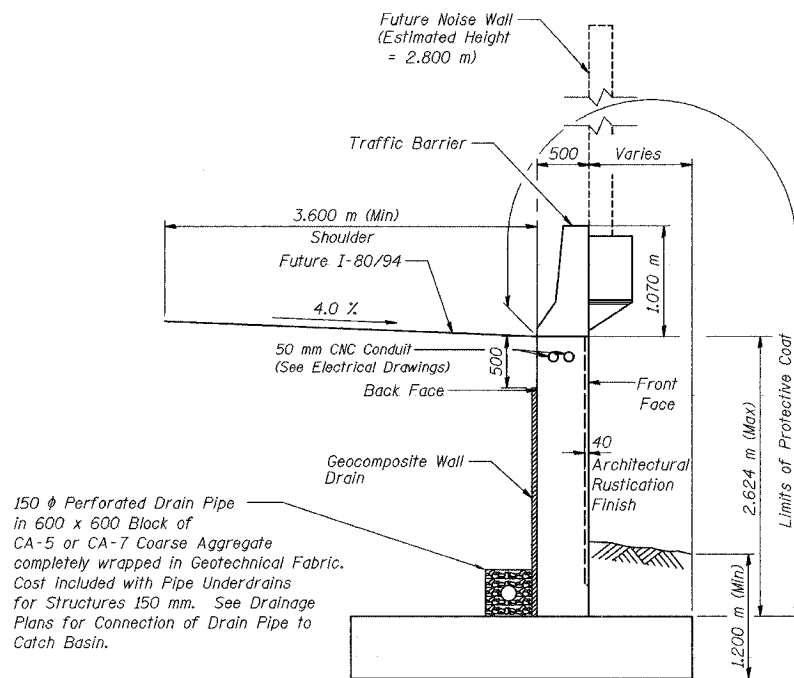
1. Reinforcement bars shall conform to the requirements of AASHTO M 31M or M322M, Grade 400
2. All dimensions are in millimeters (mm) except as noted.
3. All construction joints shall be bonded. 1

**INDEX OF SHEETS**

SHEET NO.	TITLE
S-1	General Plan
S-2	Index of Sheets, General Notes and Total Bill of Material
S-3	Plan and Elevation (1 of 6)
S-4	Plan and Elevation (2 of 6)
S-5	Plan and Elevation (3 of 6)
S-6	Plan and Elevation (4 of 6)
S-7	Plan and Elevation (5 of 6)
S-8	Plan and Elevation (6 of 6)
S-9	Wall Sections and Details
S-10	Rustication Finish Details
S-11	Boring Logs (1 of 4)
S-12	Boring Logs (2 of 4)
S-13	Boring Logs (3 of 4)
S-14	Boring Logs (4 of 4)

**TOTAL BILL OF MATERIAL**

ITEM	UNIT	QUANTITY
Structure Excavation	m <sup>3</sup>	1,831
Concrete Structures	m <sup>3</sup>	631.4
Rustication Finish	m <sup>2</sup>	160
Protective Coat	m <sup>2</sup>	784
Reinforcement Bars, Epoxy Coated	kg	47,470
Geocomposite Wall Drain	m <sup>2</sup>	320
Pipe Underdrains for Structures 150 mm	m	162.0
Noise Abatement Wall Anchor Rod Assembly	Each	46



**TYPICAL SECTION**

DESIGNED	KFA
CHECKED	MJW
DRAWN	MJW
CHECKED	GSP

ILLINOIS DEPARTMENT OF TRANSPORTATION  
 F.A.I. ROUTE 80/94 AND U.S. ROUTE 6  
 LOCAL ROAD RECONSTRUCTION  
**INDEX OF SHEETS, GENERAL NOTES  
 AND TOTAL BILL OF MATERIAL**  
 SECTION 2001-167R  
 COOK COUNTY  
 STATION 7+386.260 to STATION 7+543.382  
 STRUCTURE NO. 016-W853  
 DATE 07/05

**AMERICAN**  
 CONSULTING ENGINEERS

1 REVISED KFA 10-22-04

FOR INFORMATION ONLY

13/07/2005 08:47:25 AM