

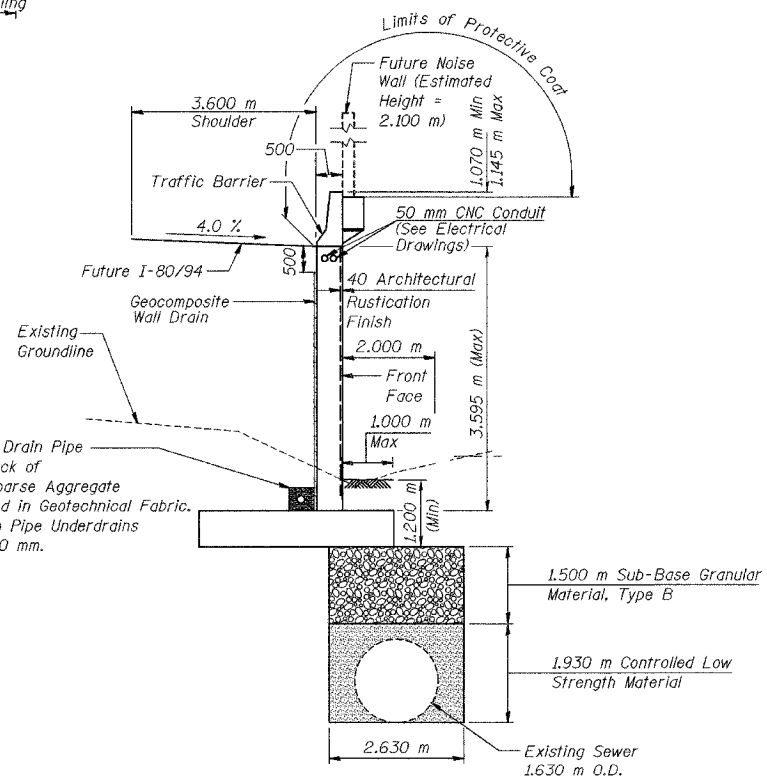
*** TEMPORARY SHEET PILING - ELEVATION**

GENERAL NOTES

1. Reinforcement bars shall conform to the requirements of AASHTO M 31M or M322M Grade 400.
2. All dimensions are in millimeters (mm) except as noted.
- * 3. If the Contractor chooses to alter the temporary cantilevered sheet piling design requirements shown on the plans, a design submittal including plan details and calculations will be required for review and acceptance by the Engineer.
4. All construction joints shall be bonded.
5. Construction for Retaining Wall SNO16-W856 will be let in separate contracts (Phase 2 and Phase 3), with each contract responsible for construction to the limits shown.

INDEX OF SHEETS

SHEET NO.	TITLE
S-1	General Plan
S-2	Index of Sheets, General Notes and Total Bill of Material
S-3	Plan and Elevation (1 of 13)
S-4	Plan and Elevation (2 of 13)
S-5	Plan and Elevation (3 of 13)
* S-6	Plan and Elevation (4 of 13)
* S-7	Plan and Elevation (5 of 13)
* S-8	Plan and Elevation (6 of 13)
* S-9	Plan and Elevation (7 of 13)
* S-10	Plan and Elevation (8 of 13)
* S-11	Plan and Elevation (9 of 13)
* S-12	Plan and Elevation (10 of 13)
* S-13	Plan and Elevation (11 of 13)
* S-14	Plan and Elevation (12 of 13)
* S-15	Plan and Elevation (13 of 13)
S-16	Wall Sections and Details
S-17	Rustication Finish Details
S-18	Boring Logs (1 of 3)
S-19	Boring Logs (2 of 3)
S-20	Boring Logs (3 of 3)



TYPICAL SECTION

TOTAL BILL OF MATERIAL

ITEM	UNIT	PHASE 3 QUANTITY	PHASE 3 QUANTITY
Structure Excavation	m ³	4,139	535.1
Concrete Structures	m ³	1,547.6	269.0
Rustication Finish	m ²	753	148
Protective Coat	m ²	470	92.7
Reinforcement Bars, Epoxy Coated	kg	102,730	18,390
Temporary Sheet Piling	m ²	538	-
Geocomposite Wall Drain	m ²	782	138
Pipe Underdrains for Structures 150 mm	m	296.5	52.5
Noise Abatement Wall Anchor Rod Assembly	Each	82	15
Controlled Low Strength Material	m ³	-	140.4
Sub-Base Granular Material, Type B	M Ton	-	408.5

DESIGNED	KFA
CHECKED	BPS
DRAWN	MJB
CHECKED	GSP

ILLINOIS DEPARTMENT OF TRANSPORTATION
 1-80/94/US 6
 KINCERY-BORMAN EXPRESSWAY
 BURNHAM ROAD TO US 41
**INDEX OF SHEETS GENERAL NOTES
 AND TOTAL BILL OF MATERIAL**
 SECTION 2626.2-R-1
 COOK COUNTY
 STATION 7+893.827 TO STATION 7+945.232
 STRUCTURE NO. 016-W856
 DATE 09/05
AMERICAN
 CONSULTING ENGINEERS

* FOR INFORMATION ONLY