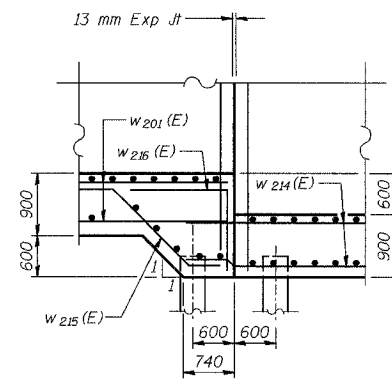
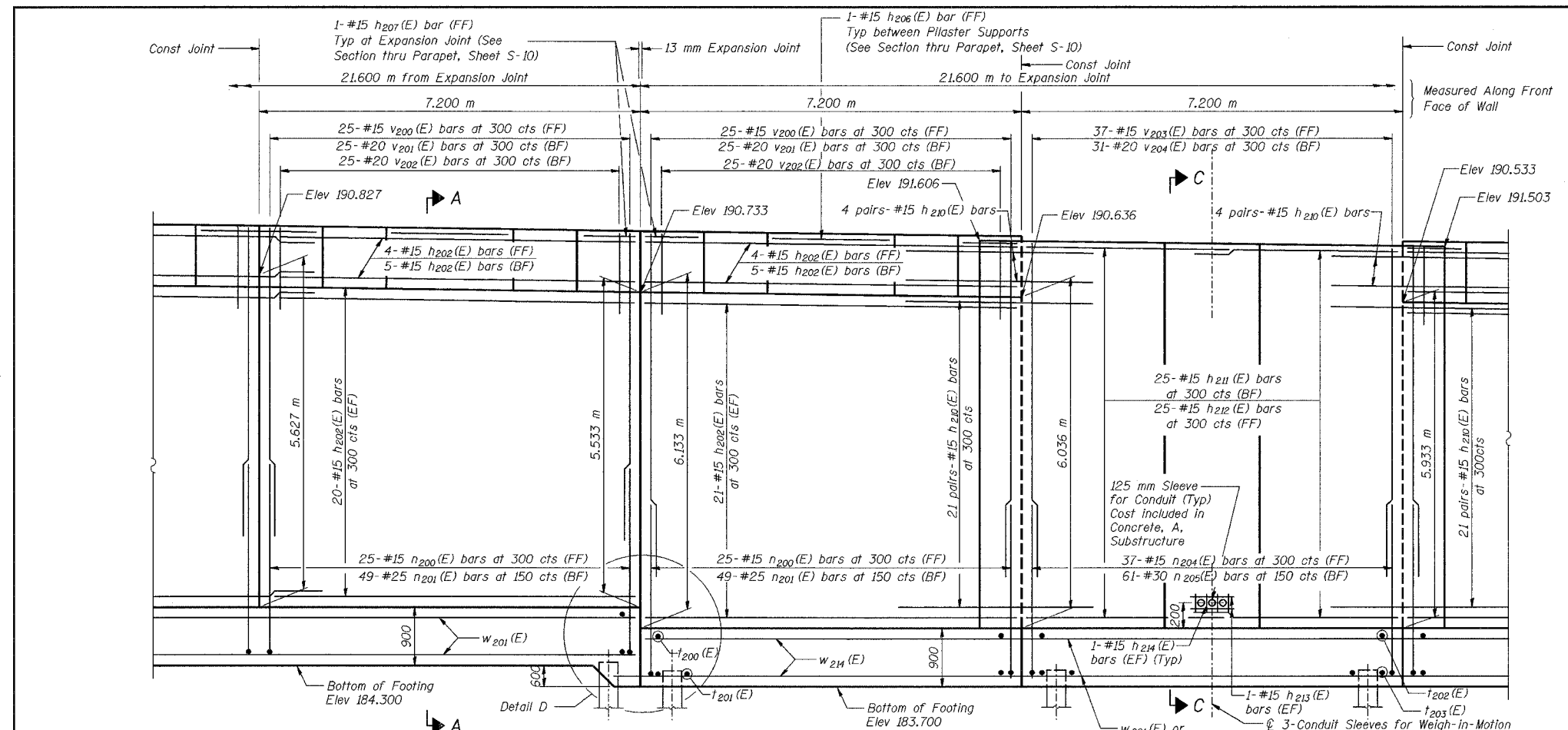


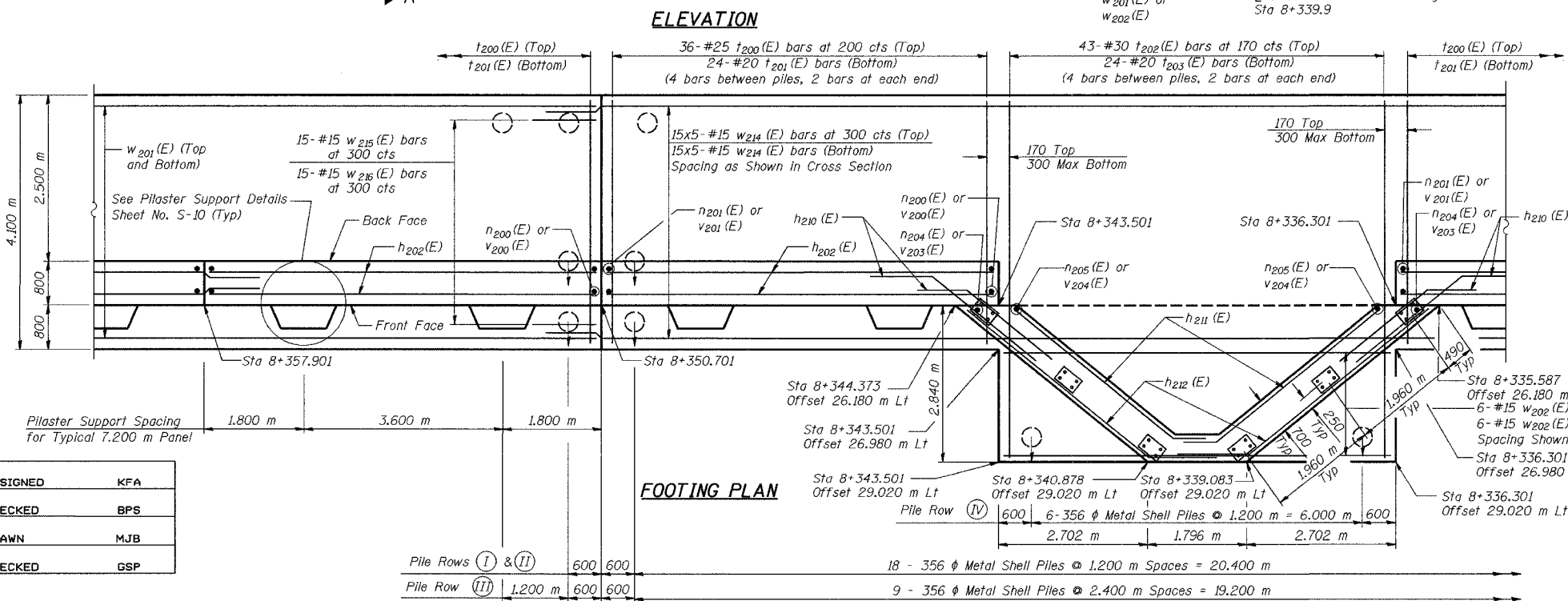
ROUTE NO.	SECTION	COUNTY	SHEETS	SHEET	SHEET NO. S-5 20 SHEETS
66/74	2626.2-R-2	LAKE COUNTY, INDIANA	1207	865	
ILLINOIS		DESIGNED PROJECT			

CONTRACT NO. 62114 INDOT DES. NO. 0100987



DETAIL D

NOTES:
 See Sheet S-10 for Section A-A and Section C-C.
 See Sheet S-11 for Expansion Joint Detail and Bill of Material.
 See Sheet S-12 for Rustication details.
 Stations are referenced to \pm 1-80/94.
 Reinforcement bars designated (E) shall be epoxy coated.
 All dimensions are in millimeters (mm) except as noted.
 Bars indicated thus 20 x 3-#15 etc. indicates 20 lines of bars with 3 lengths per line.



MINIMUM BAR LAPS
 #15 bars = 640
 #20 bars = 790

LEGEND
 BF = Back Face
 FF = Front Face
 EF = Each Face

DESIGNED	KFA
CHECKED	BPS
DRAWN	MJB
CHECKED	GSP

ILLINOIS DEPARTMENT OF TRANSPORTATION
 I-80/94/US 6
 KINGERY-BORMAN EXPRESSWAY
 BURNHAM ROAD TO US 41
PLAN AND ELEVATION (3 OF 7)
SECTION 2626.2-R-2
LAKE COUNTY, INDIANA
STATION 8+235.100 TO STATION 8+412.491
STRUCTURE NO. 016-W858
 DATE 09/05
AMERICAN
 CONSULTING ENGINEERS