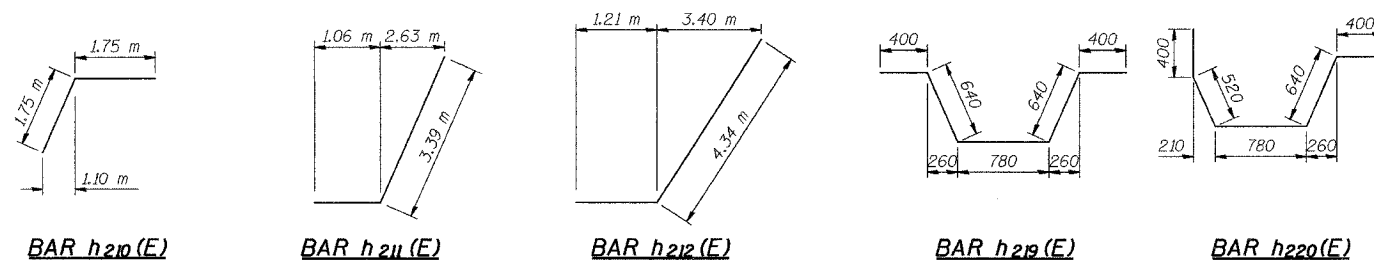


ROUTE NO.	SECTION	COUNTY	SHEETS	SHEET	SHEET NO. S-11
F.A.L. 80/74	2626.2-R-2	LAKE COUNTY, INDIANA	1207	871	20 SHEETS
SHEET NO.		SHEET		SHEET NO.	
871		1207		S-11	

CONTRACT NO. 62114 INDOT DES. NO. 0100987



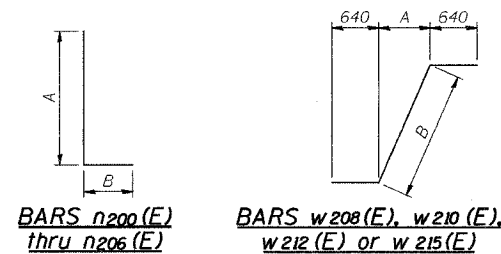
BAR h210(E)

BAR h211(E)

BAR h212(E)

BAR h219(E)

BAR h220(E)



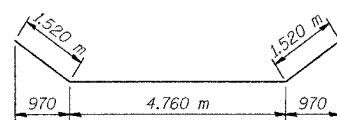
BARS n200(E) thru n206(E)

BARS w208(E), w210(E), w212(E) or w215(E)

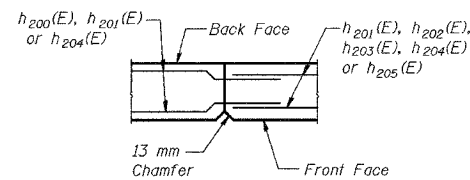
BARS w209(E), w211(E), w213(E) or w216(E)

BARS v202(E)

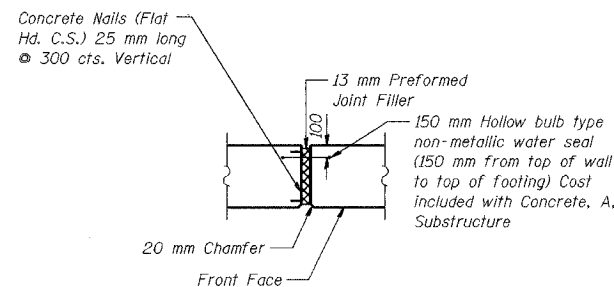
BAR v209(E)



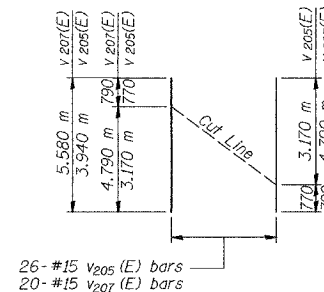
BAR h221(E)



CONSTRUCTION JOINT DETAIL



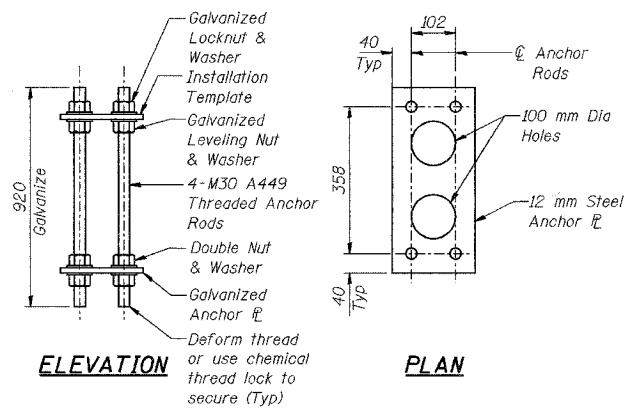
13 MM EXPANSION JOINT DETAIL



26- #15 v205(E) bars
20- #15 v207(E) bars

FIELD CUTTING DIAGRAM

Order v205(E) and v207(E) bars full length. Cut as shown and use remainder of bars in opposite face.



ELEVATION

PLAN

NOISE ABATEMENT WALL ANCHOR ROD ASSEMBLY

(50 Req'd)

DESIGNED	KFA
CHECKED	BPS
DRAWN	MJB
CHECKED	GSP

BAR DIMENSIONS

Bar	A	B
n200(E)	4.82 m	260
n201(E)	4.82 m	400
n202(E)	5.02 m	260
n203(E)	5.02 m	400
n204(E)	3.62 m	260
n205(E)	3.62 m	500
n206(E)	1.21 m	320
w208(E)	1.17 m	1.65 m
w209(E)	1.17 m	-
w210(E)	1.47 m	2.08 m
w211(E)	1.47 m	-
w212(E)	1.87 m	2.64 m
w213(E)	1.87 m	-
w215(E)	1.37 m	1.94 m
w216(E)	1.37 m	-

BILL OF MATERIAL

Bar	No.	Size	Length (m)	Shape
h200(E)	49	#15	9.33	—
h201(E)	513	#15	7.84	—
h202(E)	325	#15	7.10	—
h203(E)	51	#15	6.60	—
h204(E)	134	#20	7.84	—
h205(E)	55	#15	7.60	—
h206(E)	30	#15	2.30	—
h207(E)	14	#15	1.10	—
h208(E)	2	#15	1.85	—
h209(E)	2	#15	1.65	—
h210(E)	100	#15	3.50	—
h211(E)	50	#15	4.45	—
h212(E)	50	#15	5.55	—
h213(E)	4	#15	0.90	—
h214(E)	8	#15	0.60	—
h215(E)	22	#15	9.80	—
h216(E)	2	#15	8.17	—
h217(E)	34	#15	7.50	—
h218(E)	2	#15	7.01	—
h219(E)	160	#20	2.86	—
h220(E)	8	#20	2.74	—
h221(E)	25	#15	7.80	—
h222(E)	42	#15	2.11	—
n200(E)	383	#15	5.08	—
n201(E)	745	#25	5.22	—
n202(E)	150	#15	5.28	—
n203(E)	294	#25	5.42	—
n204(E)	37	#15	3.88	—
n205(E)	61	#25	4.02	—
n206(E)	120	#20	1.53	—
t200(E)	514	#25	4.00	—
t201(E)	340	#20	4.00	—
t202(E)	43	#30	6.04	—
t203(E)	24	#20	6.04	—
t204(E)	78	#20	2.50	—
t205(E)	77	#20	2.90	—
t206(E)	251	#25	4.20	—
t207(E)	142	#20	4.20	—
t208(E)	77	#25	4.80	—
v209(E)	533	#15	4.47	—
v201(E)	530	#20	3.48	—
v202(E)	530	#20	1.99	—
v203(E)	37	#15	4.08	—
v204(E)	31	#20	4.95	—
v205(E)	26	#15	3.94	—
v206(E)	16	#15	3.18	—
v207(E)	20	#15	5.58	—
v208(E)	12	#15	4.83	—
v209(E)	252	#20	2.47	—

Bar	No.	Size	Length (m)	Shape
W200(E)	90	#15	8.09	—
W201(E)	180	#15	7.84	—
W202(E)	46	#15	7.10	—
W203(E)	90	#15	7.68	—
W204(E)	30	#15	4.94	—
W205(E)	60	#15	8.67	—
W206(E)	20	#15	9.80	—
W207(E)	22	#15	7.50	—
W208(E)	15	#15	2.93	—
W209(E)	15	#15	2.34	—
W210(E)	30	#15	3.36	—
W211(E)	30	#15	2.94	—
W212(E)	15	#15	3.92	—
W213(E)	15	#15	3.74	—
W214(E)	150	#15	9.28	—
W215(E)	15	#15	3.22	—
W216(E)	15	#15	2.74	—
Test Pile, 356 mm	Each		4	
Excavation, Foundation, Unclassified		m ³	3,995.0	
Concrete, A, Substructure		m ³	1,385.6	
Reinforcing Bars, Epoxy Coated		kg	89,250	
Surface Seal		L Sum	0.02	
Pile, Concrete, Steel Shell Encased, 6.35 mm, 356 mm		m	5,907.0	
Geocomposite Wall Drain		m ²	921	
Pipe, Underdrain, Perf. 1.63 mm, 150 mm		m	177.4	
Noise Abatement Wall Anchor Rod Assembly		Each	50	
Overhead Sign Structure - Span, Anchor Rod Assembly		Each	2	
B Borrow		m ³	350.9	
Structural Backfill		m ³	4,114.5	
Masonry Coating		L Sum	0.04	

The estimated Surface Seal area is 276.7 m²
The estimated Masonry Coating area is 276.7 m²

NOTES:

- See Sheet S-10 for Wall and Parapet Sections
- See Sheet S-12 for Rustication details.
- Reinforcement bars designated (E) shall be epoxy coated.
- All dimensions are in millimeters (mm) except as noted.
- See Typical Section on Sheet S-2 for Drainage Details and Surface Seal Limits.

ILLINOIS DEPARTMENT OF TRANSPORTATION
I-80/94/US 6
KINGERY-BORMAN EXPRESSWAY
BURNHAM ROAD TO US 41

WALL SECTIONS AND DETAILS (2 OF 2)
SECTION 2626.2-R-2
LAKE COUNTY, INDIANA
STATION 8+235.100 TO STATION 8+412.491
STRUCTURE NO. 016-W858

DATE 09/05

AMERICAN
CONSULTING ENGINEERS