

BORING NO. AR-093 (1 OF 2)

BORING NO. AR-093 (2 OF 2)

BORING NO. AR-094 (1 OF 2)

BORING LOG AR-093 Page 1 of 2

Wang Engineering, INC. Consulting Geotechnical and Environmental Engineers
wangeng3@wangeng.com
100 Fairbank Street
Addison, IL 60101
Telephone: 630 458-0700
Fax: 630 458-0900

WEI Job No.: 255-08-01
Client: American Consulting Engineers
Project: FAI 80/94, I-294 to US 41
Location: s13 T36N R10W & s29 R15E T36N

Datum: NGVD
Elevation: 190.39 m
North: 545323.55 m
East: 367779.18 m
Station: 8+367.49
Offset: 17.53 LT

BORING LOG AR-093 Page 2 of 2

Wang Engineering, INC. Consulting Geotechnical and Environmental Engineers
wangeng3@wangeng.com
100 Fairbank Street
Addison, IL 60101
Telephone: 630 458-0700
Fax: 630 458-0900

WEI Job No.: 255-08-01
Client: American Consulting Engineers
Project: FAI 80/94, I-294 to US 41
Location: s13 T36N R10W & s29 R15E T36N

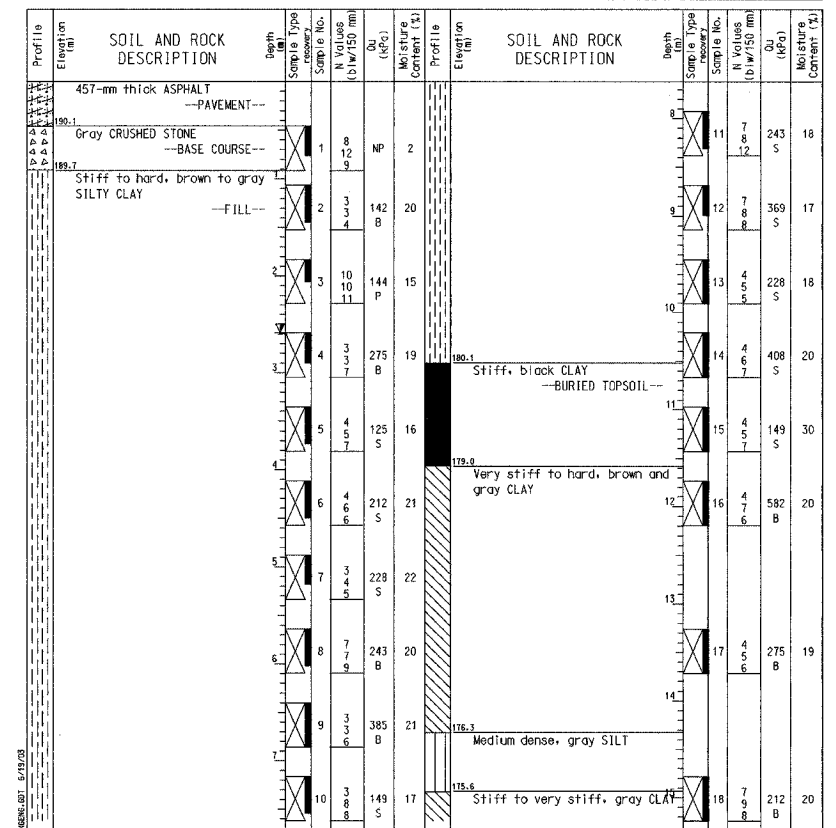
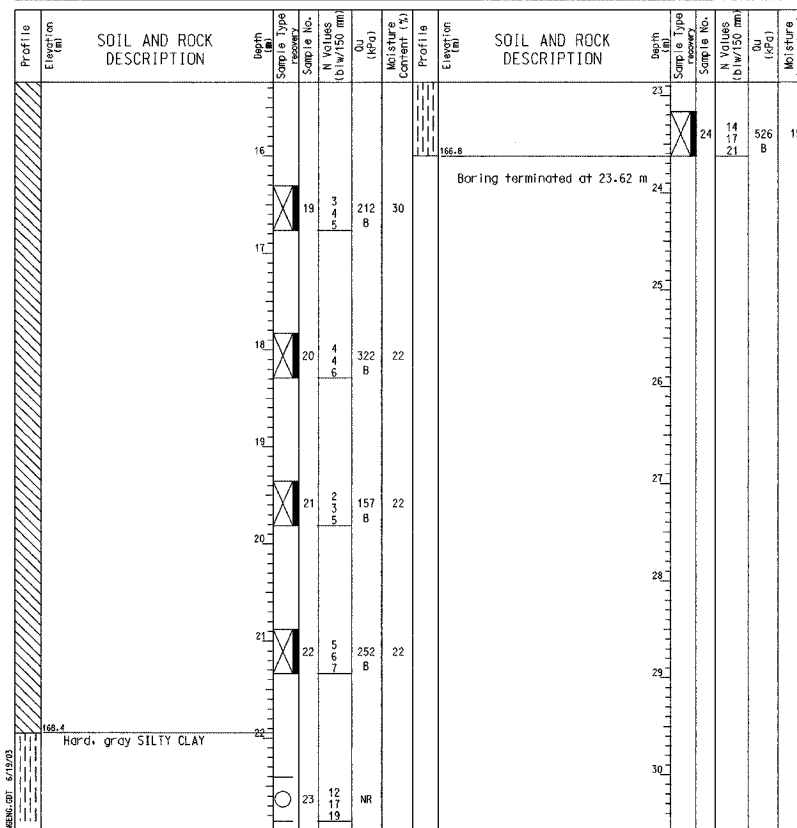
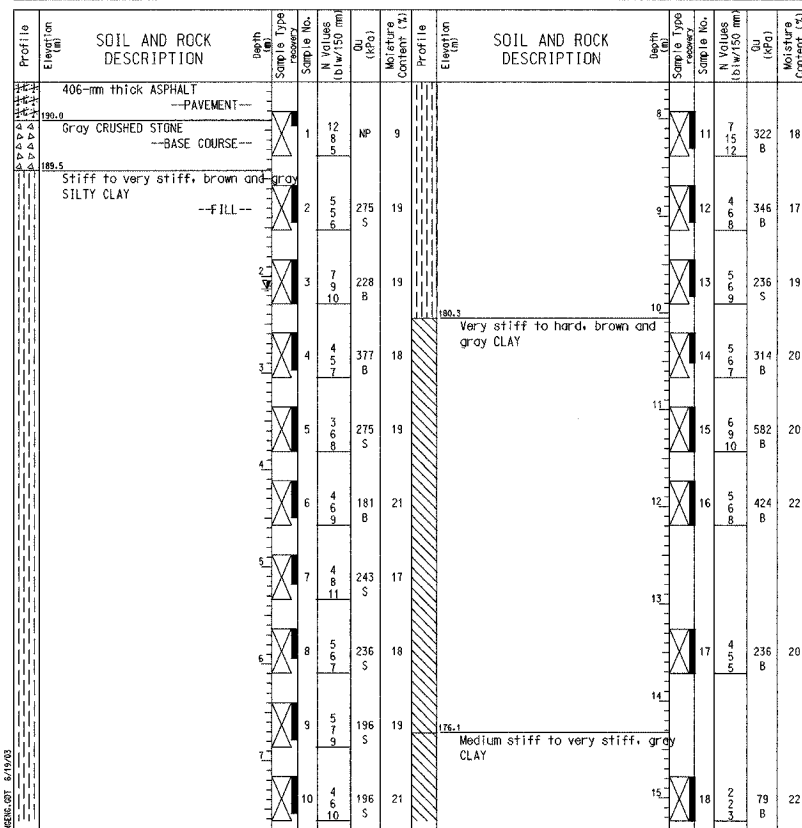
Datum: NGVD
Elevation: 190.39 m
North: 545323.55 m
East: 367779.18 m
Station: 8+367.49
Offset: 17.53 LT

BORING LOG AR-094 Page 1 of 2

Wang Engineering, INC. Consulting Geotechnical and Environmental Engineers
wangeng3@wangeng.com
100 Fairbank Street
Addison, IL 60101
Telephone: 630 458-0700
Fax: 630 458-0900

WEI Job No.: 255-08-01
Client: American Consulting Engineers
Project: FAI 80/94, I-294 to US 41
Location: s13 T36N R10W & s29 R15E T36N

Datum: NGVD
Elevation: 190.58 m
North: 545317.97 m
East: 367795.95 m
Station: 8+385.16
Offset: 17.88 LT



GENERAL NOTES

Begin Drilling 04-18-2002 Complete Drilling 04-18-2002
 Drilling Contractor TSC Drill Rig CME 75
 Driller C&A Logger H. Suhail Checked by B. Fugiel
 Drilling Method Mud Rotary; Grouted after final water reading

WATER LEVEL DATA

While Drilling
 At Completion of Drilling
 Time After Drilling 24 hours
 Depth to Water 2.13 m
 The stratification lines represent the approximate boundary between soil types; the actual transition may be gradual.

GENERAL NOTES

Begin Drilling 04-18-2002 Complete Drilling 04-18-2002
 Drilling Contractor TSC Drill Rig CME 75
 Driller C&A Logger H. Suhail Checked by B. Fugiel
 Drilling Method Mud Rotary; Grouted after final water reading

WATER LEVEL DATA

While Drilling
 At Completion of Drilling
 Time After Drilling 24 hours
 Depth to Water 2.13 m
 The stratification lines represent the approximate boundary between soil types; the actual transition may be gradual.

GENERAL NOTES

Begin Drilling 04-17-2002 Complete Drilling 04-17-2002
 Drilling Contractor TSC Drill Rig CME 75
 Driller C&A Logger H. Suhail Checked by B. Fugiel
 Drilling Method Mud Rotary; Grouted after final water reading

WATER LEVEL DATA

While Drilling
 At Completion of Drilling
 Time After Drilling 24 hours
 Depth to Water 2.59 m
 The stratification lines represent the approximate boundary between soil types; the actual transition may be gradual.

DESIGNED	KFA
CHECKED	BPS
DRAWN	CAK/JB
CHECKED	GSP

ILLINOIS DEPARTMENT OF TRANSPORTATION
 I-80/94/US 6
 KINGERY-BORMAN EXPRESSWAY
 BURNHAM ROAD TO US 41

BORING LOGS (5 OF 7)
SECTION 2626.2-R-2
LAKE COUNTY, INDIANA
STATION 8+235.100 TO STATION 8+412.491
STRUCTURE NO. 016-W858

DATE 09/05

AMERICAN
 CONSULTING ENGINEERS