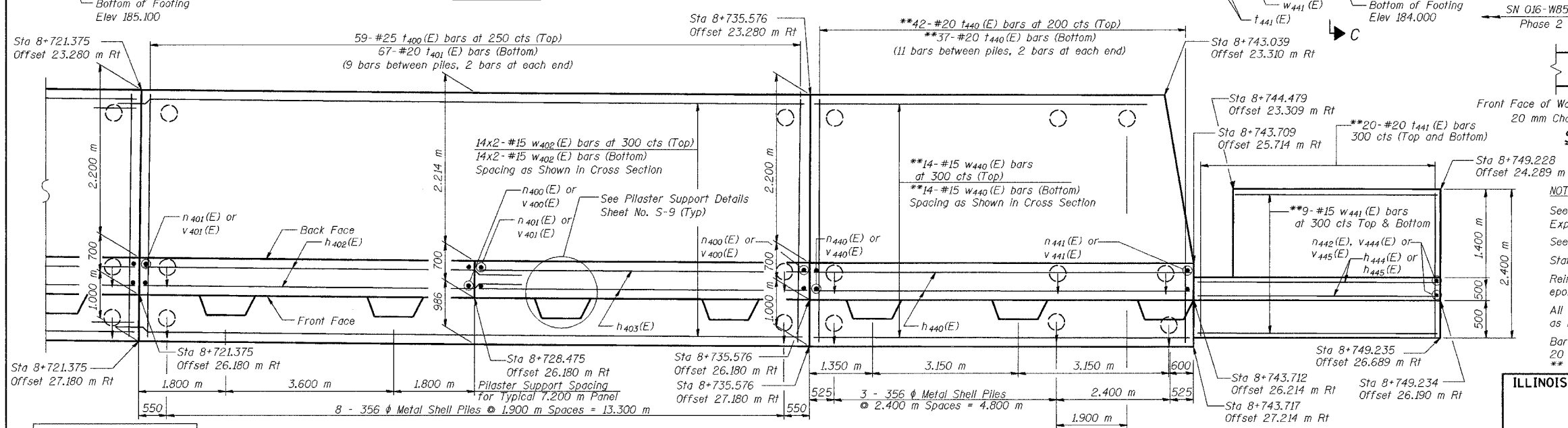
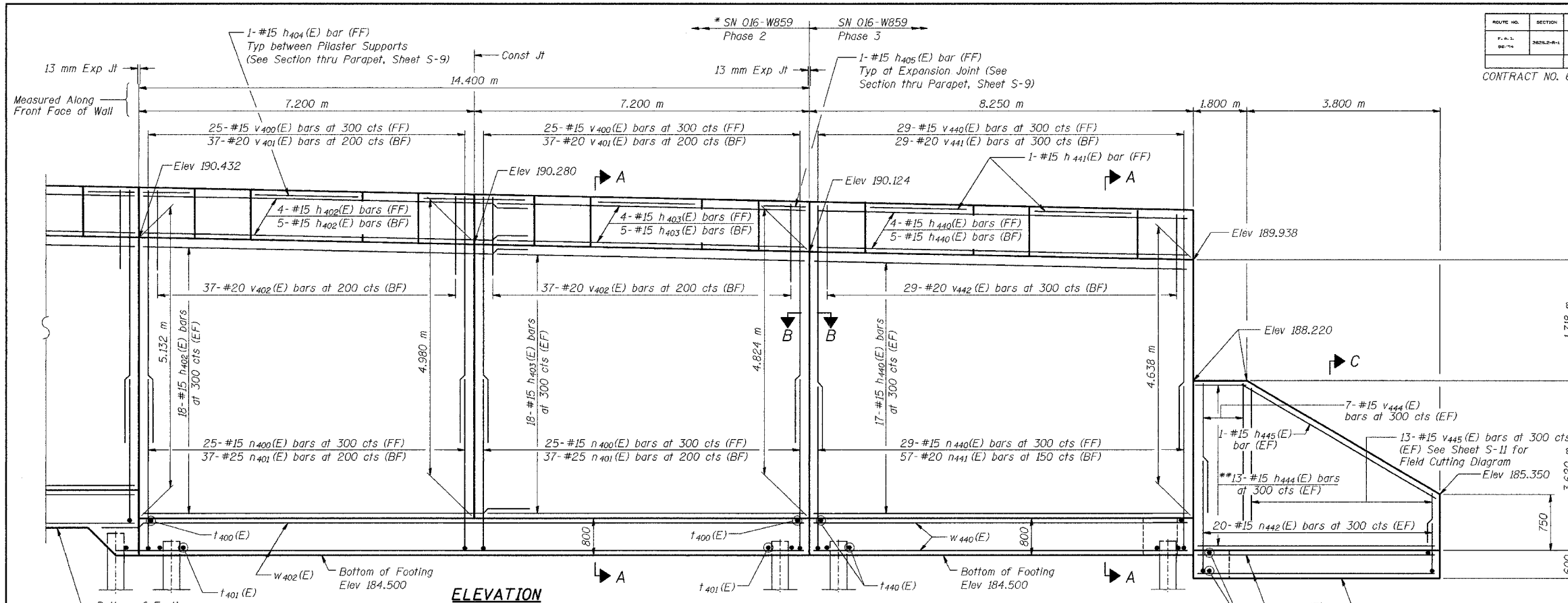


ROUTE NO.	SECTION	COUNTY	SHEET	SET	SHEET NO. S-8
1207	888	LAKE COUNTY, INDIANA	1207	888	17 SHEETS
CONTRACT NO. 62114					INDOT DES. NO. 0100987



DESIGNED	KFA
CHECKED	BPS
DRAWN	MJB
CHECKED	GSP

FOOTING PLAN

MINIMUM BAR LAPS
 #15 bars = 640
 #20 bars = 790

LEGEND
 BF = Back Face
 FF = Front Face
 EF = Each Face

NOTES:

- See Sheet S-9 for Section A-A, Section C-C, Expansion Joint Detail and Bill of Material.
- See Sheet S-10 for Rustication details.
- Stations are referenced to CL I-80/94.
- Reinforcement bars designated (E) shall be epoxy coated.
- All dimensions are in millimeters (mm) except as noted.
- Bars indicated thus 20 x 3-#15 etc. indicates 20 lines of bars with 3 lengths per line.
- ** Cuf to fit.

ILLINOIS DEPARTMENT OF TRANSPORTATION
 I-80/94/US 6
 KINGERY-BORMAN EXPRESSWAY
 BURNHAM ROAD TO US 41

PLAN AND ELEVATION (6 OF 6)
 SECTION 2626.2-R-1
 LAKE COUNTY, INDIANA
 STATION 8+735.576 TO STATION 8+748.936
 STRUCTURE NO. 016-W859

DATE 09/05

AMERICAN
 CONSULTING ENGINEERS

* FOR INFORMATION ONLY