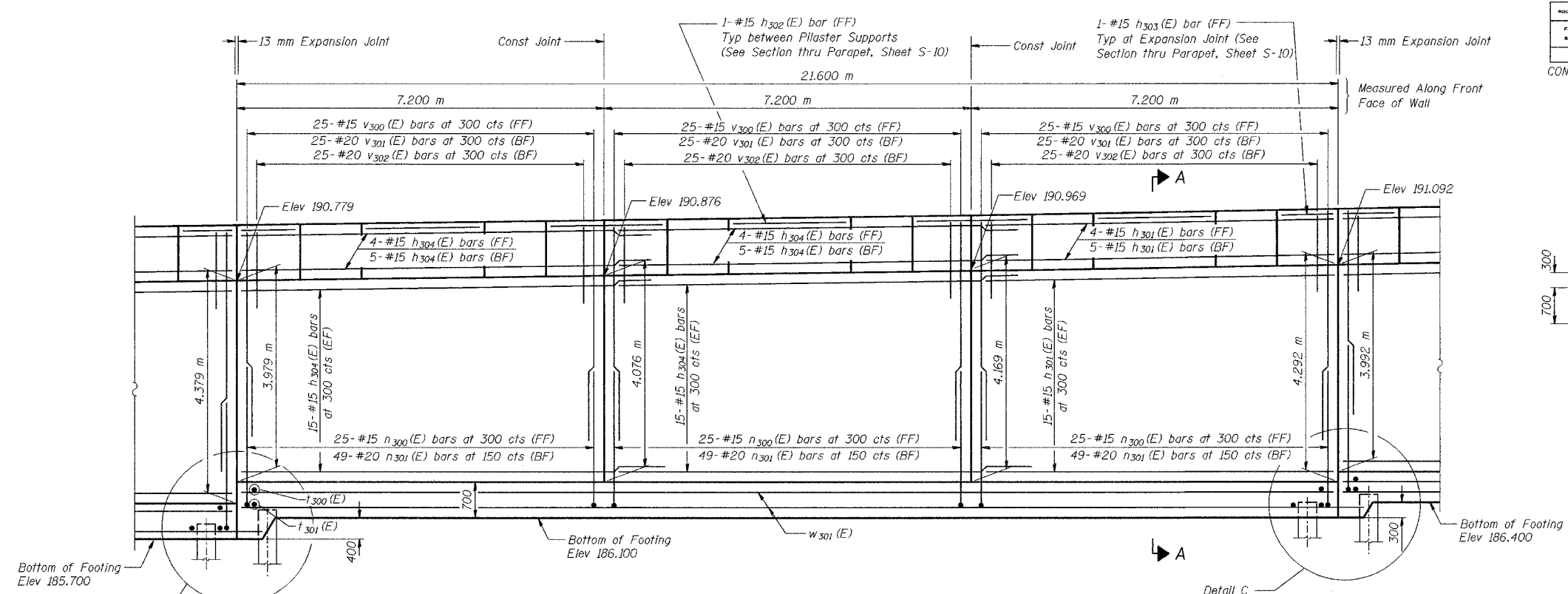
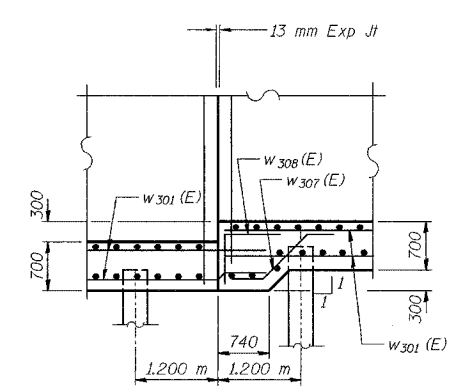


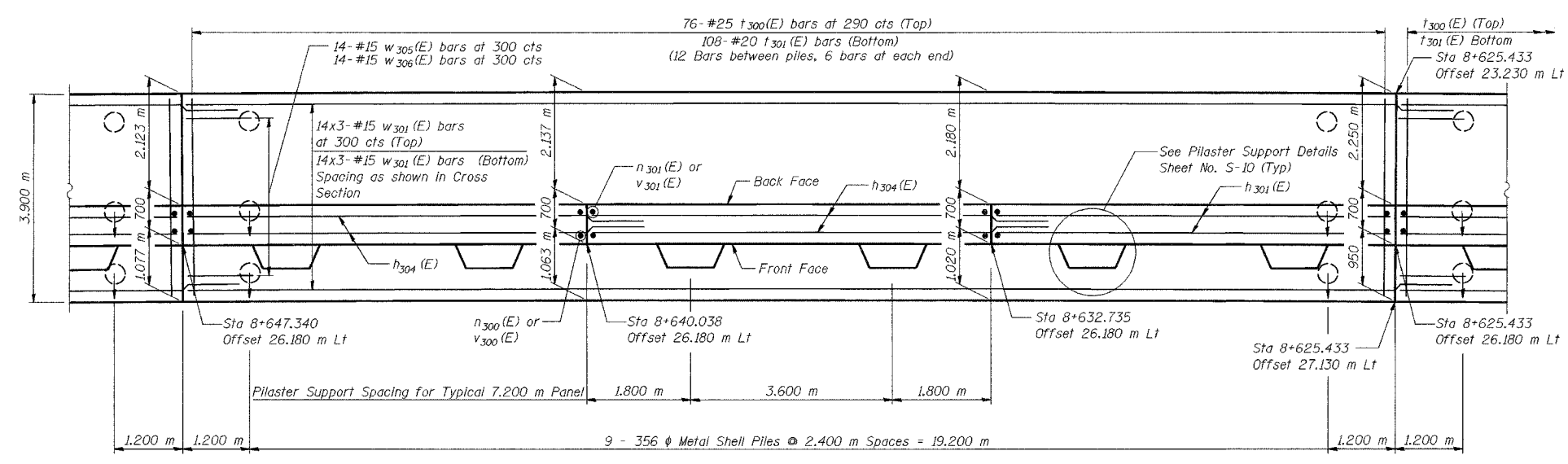
| | | | | | |
|--------------------|------------|------------------------|-------|-------|----------------------------|
| ROUTE NO. | SECTION | COUNTY | SHEET | SHEET | SHEET NO. S-7 19 SHEETS |
| P.A.L. 88-74 | 2626.2-R-2 | LAKE COUNTY, INDIANA | 1207 | 904 | |
| CONTRACT NO. 62114 | | INDOT DES. NO. 0100987 | | | |



ELEVATION



DETAIL C



FOOTING PLAN

| | |
|----------|-----|
| DESIGNED | KFA |
| CHECKED | BPS |
| DRAWN | MJB |
| CHECKED | GSP |

MINIMUM BAR LAPS
 #15 bars = 640
 #20 bars = 790

LEGEND
 BF = Back Face
 FF = Front Face
 EF = Each Face

NOTES:
 See Sheet S-10 for Section A-A.
 See Sheet S-11 for Expansion Joint Detail and Bill of Material.
 See Sheet S-12 for Rustication details.
 Stations are referenced to \pm I-80/94.
 Reinforcement bars designated (E) shall be epoxy coated.
 All dimensions are in millimeters (mm) except as noted.
 Bars indicated thus 20 x 3-#15 etc. indicates 20 lines of bars with 3 lengths per line.

ILLINOIS DEPARTMENT OF TRANSPORTATION
 I-80/94/US 6
 KINGERY-BORMAN EXPRESSWAY
 BURNHAM ROAD TO US 41

PLAN AND ELEVATION (5 OF 7)
SECTION 2626.2-R-2
LAKE COUNTY, INDIANA
STATION 8+581.326 TO STATION 8+733.961
STRUCTURE NO. 016-W860

DATE 09/05

AMERICAN
 CONSULTING ENGINEERS