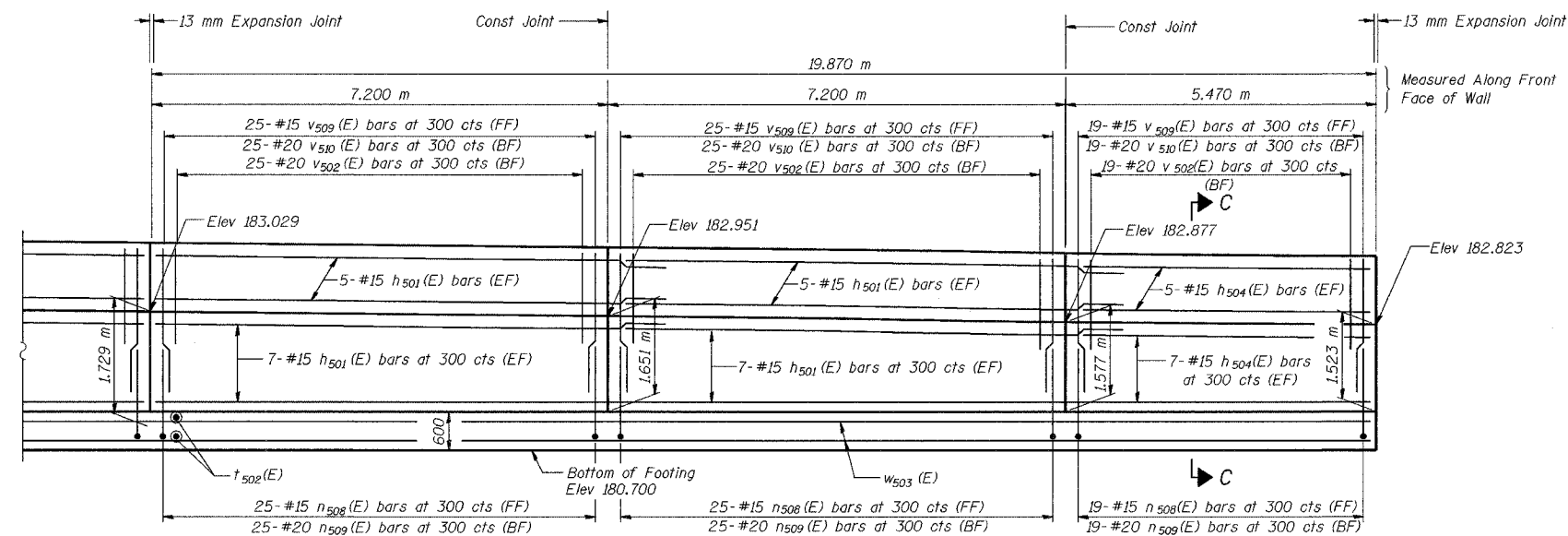
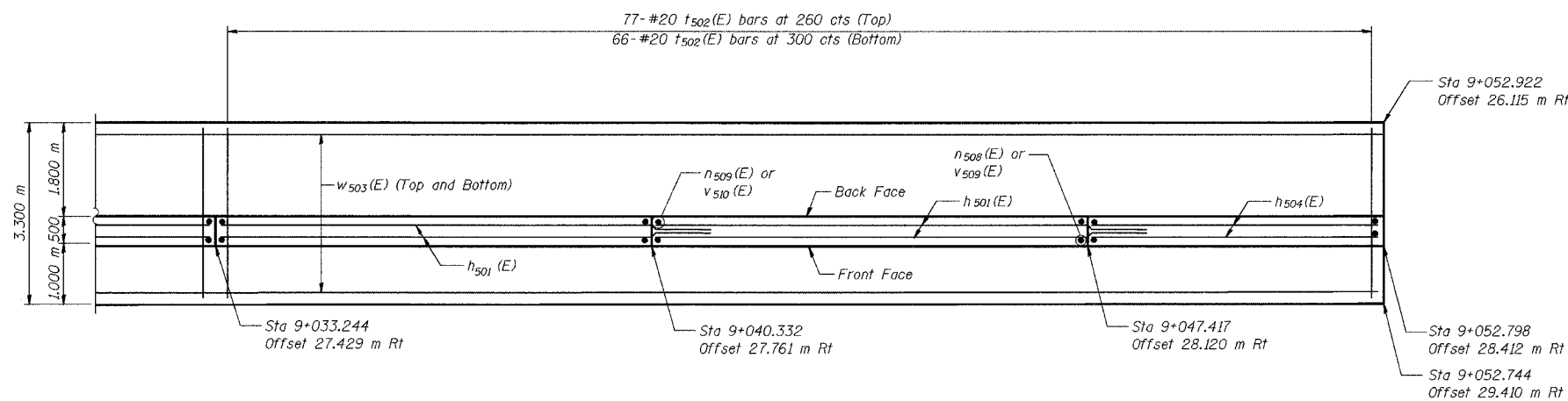


ROUTE NO.	SECTION	COUNTY	SHEET NO.	SHEET TOTAL	SHEET NO. S-15 29 SHEETS
66-71	2626.2-R-2	LAKE COUNTY, INDIANA	1207	931	
DRAWN		DESIGNED		CONTRACT NO. 62114 INDOT DES. NO. 0100987	



**ELEVATION**



**FOOTING PLAN**

DESIGNED	KFA
CHECKED	BPS
DRAWN	MJB
CHECKED	GSP

**MINIMUM BAR LAPS**

#15 bars = 640  
#20 bars = 790

**LEGEND**

BF = Back Face  
FF = Front Face  
EF = Each Face

**NOTES:**

- See Sheet S-19 for Section C-C.
- See Sheet S-20 for Expansion Joint Detail and Bill of Material.
- See Sheet S-21 for Rustication details.
- Stations are referenced to  $\text{C} \text{ I-80/94}$ .
- Reinforcement bars designated (E) shall be epoxy coated.
- All dimensions are in millimeters (mm) except as noted.
- Bars indicated thus 20 x 3-#15 etc. indicates 20 lines of bars with 3 lengths per line.

ILLINOIS DEPARTMENT OF TRANSPORTATION  
I-80/94/US 6  
KINGERY-BORMAN EXPRESSWAY  
BURNHAM ROAD TO US 41

**PLAN AND ELEVATION (13 OF 13)**  
**SECTION 2626.2-R-2**  
**LAKE COUNTY, INDIANA**  
**STATION 8+774.073 TO STATION 9+227.203**  
**STRUCTURE NO. 016-W861**

DATE 09/05

**AMERICAN**  
CONSULTING ENGINEERS