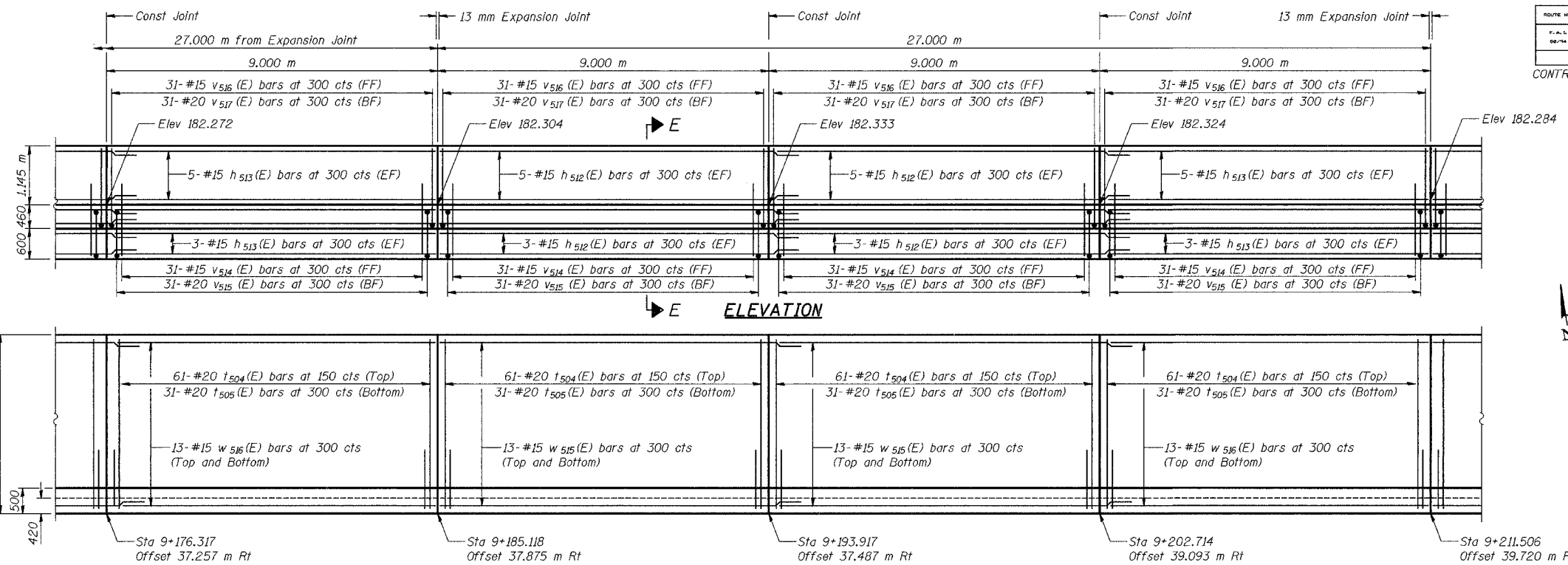
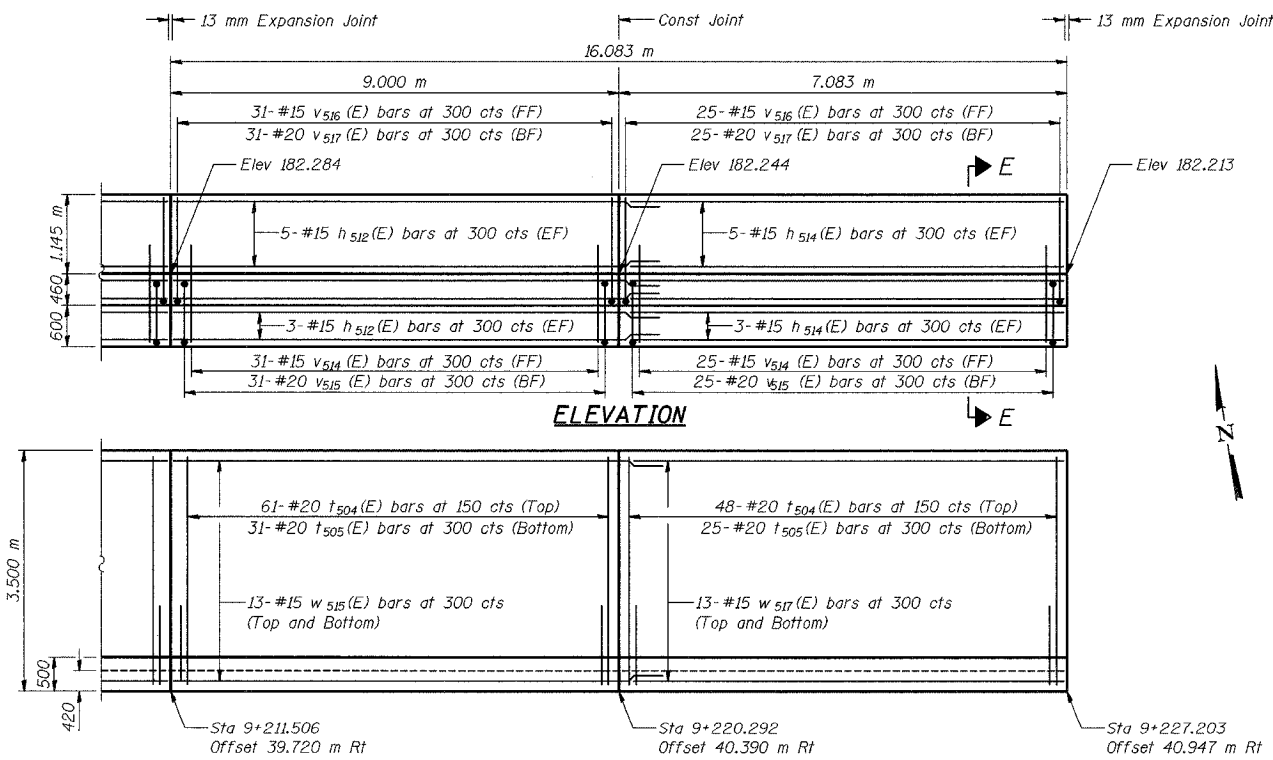


ROUTE NO.	SECTION	COUNTY	SHEET	SHEET NO. S-18
1207	934	LAKE COUNTY, INDIANA	29 SHEETS	
CONTRACT NO. 62114		INDOT DES. NO. 0100987		



ANCHORAGE SLAB PLAN



ANCHORAGE SLAB PLAN

DESIGNED	KFA
CHECKED	BPS
DRAWN	MJB
CHECKED	GSP

MINIMUM BAR LAPS

#15 bars = 640
#20 bars = 790

LEGEND

BF = Back Face
FF = Front Face
EF = Each Face

NOTES:
See Sheet S-19 for Section E-E.
See Sheet S-20 for Expansion Joint Detail and Bill of Material.
Stations are referenced to \odot I-80/94.
Reinforcement bars designated (E) shall be epoxy coated.
All dimensions are in millimeters (mm) except as noted.
Bars indicated thus 20 x 3-#15 etc. indicates 20 lines of bars with 3 lengths per line.

ILLINOIS DEPARTMENT OF TRANSPORTATION
I-80/94/US 6
KINGERY-BORMAN EXPRESSWAY
BURNHAM ROAD TO US 41

PARAPET AND ANCHORAGE SLAB (3 OF 3)
SECTION 2626.2-R-2
LAKE COUNTY, INDIANA
STATION 8+774.073 TO STATION 9+227.203
STRUCTURE NO. 016-W861

DATE 09/05

AMERICAN
CONSULTING ENGINEERS