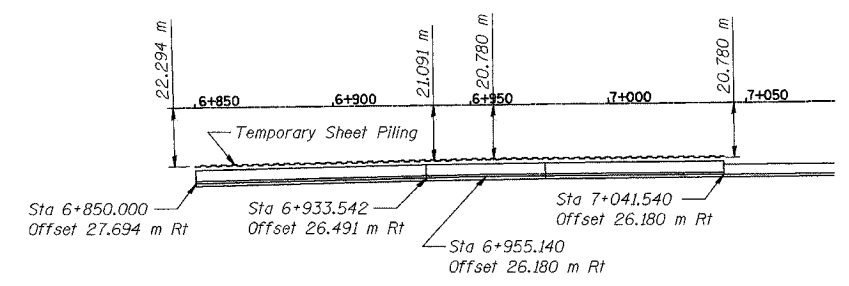


**TEMPORARY SHEET PILING - ELEVATION**



**TEMPORARY SHEET PILING - PLAN**

DESIGNED	BHS
CHECKED	KFA
DRAWN	MJB
CHECKED	GSP

**GENERAL NOTES**

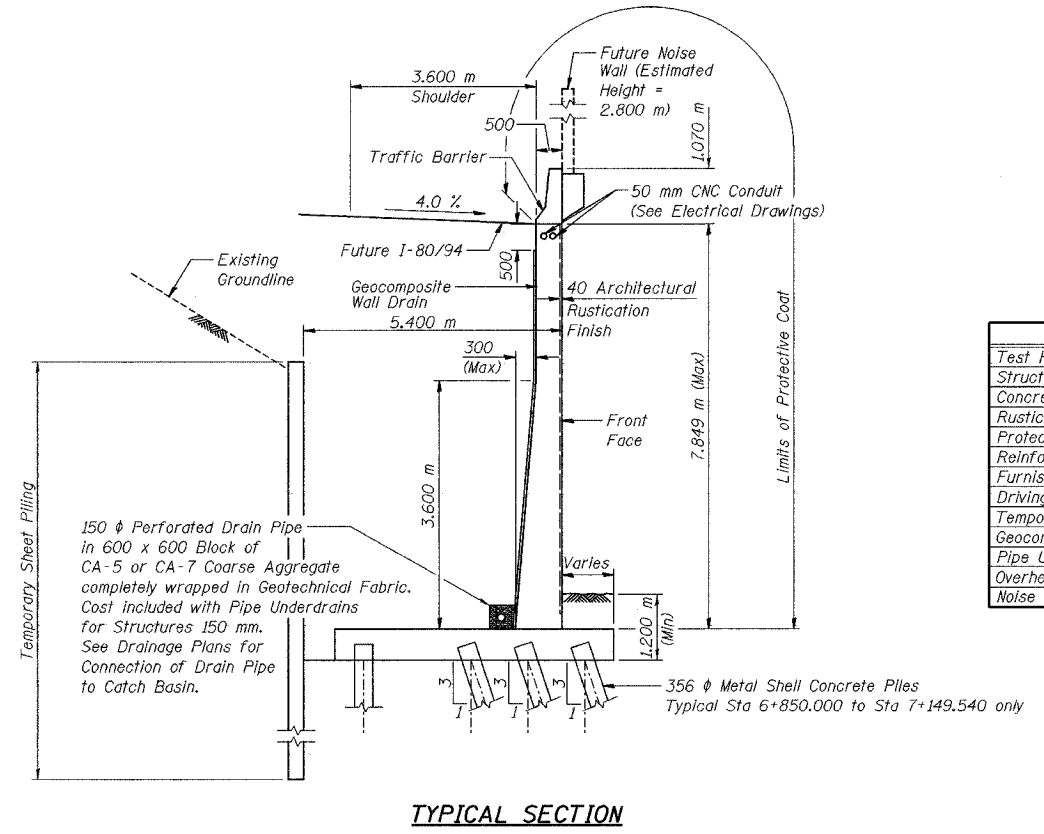
1. Reinforcement bars shall conform to the requirements of AASHTO M 31M or M322M Grade 400.
2. The Contractor shall drive 8 test piles in permanent locations spaced approximately 60 m apart, as directed by the Engineer before ordering the remainder of the piles.
3. All dimensions are in millimeters (mm) except as noted.
4. All construction joints shall be bonded. [1]

**INDEX OF SHEETS**

SHEET NO.	TITLE
S-1	General Plan
S-2	Index of Sheets, General Notes and Total Bill of Material
S-3	Plan and Elevation (1 of 19)
S-4	Plan and Elevation (2 of 19)
S-5	Plan and Elevation (3 of 19)
S-6	Plan and Elevation (4 of 19)
S-7	Plan and Elevation (5 of 19)
S-8	Plan and Elevation (6 of 19)
S-9	Plan and Elevation (7 of 19)
S-10	Plan and Elevation (8 of 19)
S-11	Plan and Elevation (9 of 19)
S-12	Plan and Elevation (10 of 19)
S-13	Plan and Elevation (11 of 19)
S-14	Plan and Elevation (12 of 19)
S-15	Plan and Elevation (13 of 19)
S-16	Plan and Elevation (14 of 19)
S-17	Plan and Elevation (15 of 19)
S-18	Plan and Elevation (16 of 19)
S-19	Plan and Elevation (17 of 19)
S-20	Plan and Elevation (18 of 19)
S-21	Plan and Elevation (19 of 19)
S-22	Wall Sections and Details
S-23	Rustication Finish Details
S-24	Concrete Pile Details
S-25	Boring Logs (1 of 13)
S-26	Boring Logs (2 of 13)
S-27	Boring Logs (3 of 13)
S-28	Boring Logs (4 of 13)
S-29	Boring Logs (5 of 13)
S-30	Boring Logs (6 of 13)
S-31	Boring Logs (7 of 13)
S-32	Boring Logs (8 of 13)
S-33	Boring Logs (9 of 13)
S-34	Boring Logs (10 of 13)
S-35	Boring Logs (11 of 13)
S-36	Boring Logs (12 of 13)
S-37	Boring Logs (13 of 13)

**TOTAL BILL OF MATERIAL**

ITEM	UNIT	QUANTITY
Test Pile Metal Shells	Each	8
Structure Excavation	m <sup>3</sup>	6,404
Concrete Structures	m <sup>3</sup>	3,456.0
Rustication Finish	m <sup>2</sup>	1,812
Protective Coat	m <sup>2</sup>	3,979
Reinforcement Bars, Epoxy Coated	kg	246,500
Furnishing Metal Pile Shells, 356 mm	m	10,157.0
Driving and Filling Shells	m	10,157.0
Temporary Sheet Piling	m <sup>2</sup>	2,037
Geocomposite Wall Drain	m <sup>2</sup>	2,354
Pipe Underdrains for Structures 150 mm	m	555.5
Overhead Sign Structure - Span, Anchor Rod Assembly	Each	2
Noise Abatement Wall Anchor Rod Assembly	Each	153



**TYPICAL SECTION**

[1] REVISED KFA 10-22-04

FOR INFORMATION ONLY

ILLINOIS DEPARTMENT OF TRANSPORTATION  
 F.A.L. ROUTE 80/94 AND U.S. ROUTE 6  
 LOCAL ROAD RECONSTRUCTION  
**INDEX OF SHEETS, GENERAL NOTES  
 AND TOTAL BILL OF MATERIAL**  
 SECTION 2001-167R  
 COOK COUNTY  
 STATION 6+850.000 to STATION 7+400.281  
 STRUCTURE NO. 016-W873  
 DATE 07/05  
**AMERICAN**  
 CONSULTING ENGINEERS