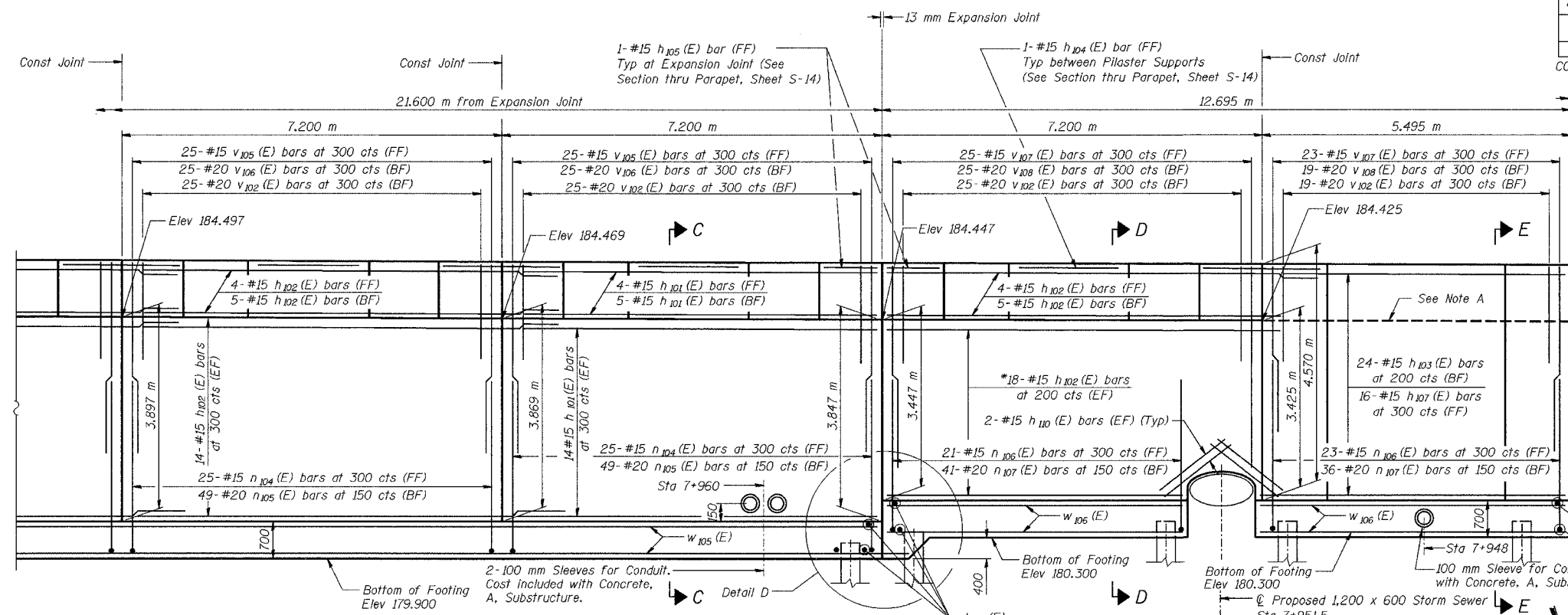
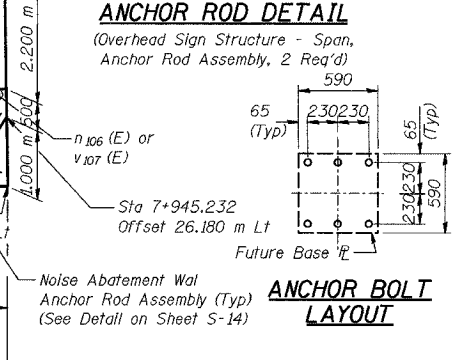
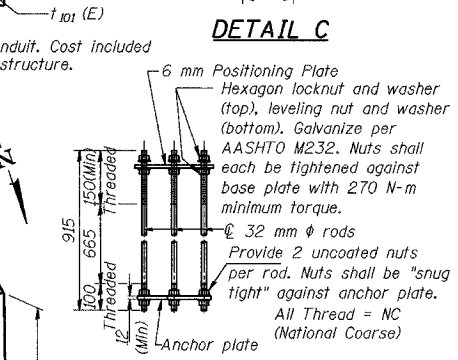
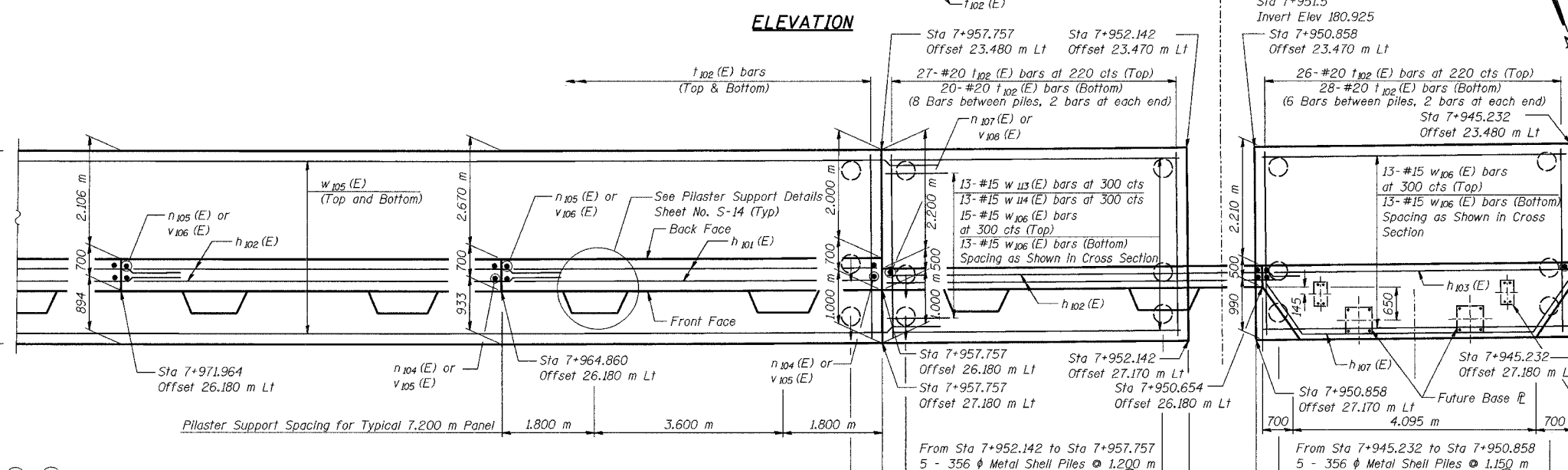
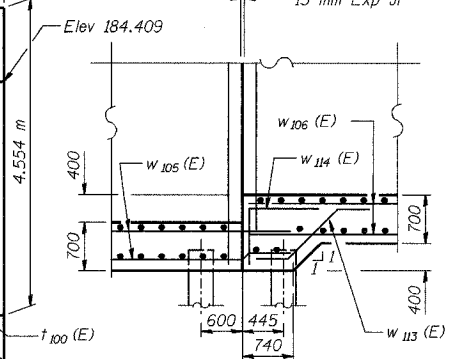


ROUTE NO.	SECTION	COUNTY	SHEET	SHEET NO. S-13
F.A.L.	2626.2-R-2	LAKE COUNTY, INDIANA	1207	1055
CONTRACT NO. 62114 INDOT DES. NO. 0100987				20 SHEETS
SN 016-W856				



NOTE A  
Construction Joint 1.145 m below top of parapet shall not be continued thru section of wall supporting the Overhead Sign Structure - Span. Finished appearance of front face of wall in this section shall be the same as that in the adjacent sections of wall.



DESIGNED	KFA
CHECKED	BPS
DRAWN	MJB
CHECKED	GSP

NOTES:  
See Sheet S-14 for Section A-A, Section D-D and Section E-E.  
See Sheet S-15 for Expansion Joint Detail and Bill of Material.  
See Sheet S-16 for Rustication details.  
Stations are referenced to  $\odot$  I-80/94.  
Reinforcement bars designated (E) shall be epoxy coated.

All dimensions are in millimeters (mm) except as noted.  
Bars indicated thus 20 x 3-#15 etc. indicates 20 lines of bars with 3 lengths per line.  
See Electrical Drawings for Junction Box and Conduit Details.  
\* Cut to Fit

**FOOTING PLAN**

**MINIMUM BAR LAPS**  
#15 bars = 640  
#20 bars = 790

**LEGEND**  
BF = Back Face  
FF = Front Face  
EF = Each Face

ILLINOIS DEPARTMENT OF TRANSPORTATION  
I-80/94/US 6  
KINGERY-BORMAN EXPRESSWAY  
BURNHAM ROAD TO US 41  
**PLAN AND ELEVATION (11 OF 11)**  
**SECTION 2626.2-R-2**  
**LAKE COUNTY, INDIANA**  
**STATION 7+945.232 TO STATION 8+196.892**  
**STRUCTURE NO. 016-W919**  
DATE 09/05  
**AMERICAN CONSULTING ENGINEERS**