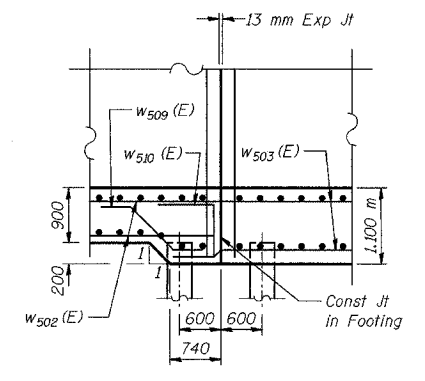
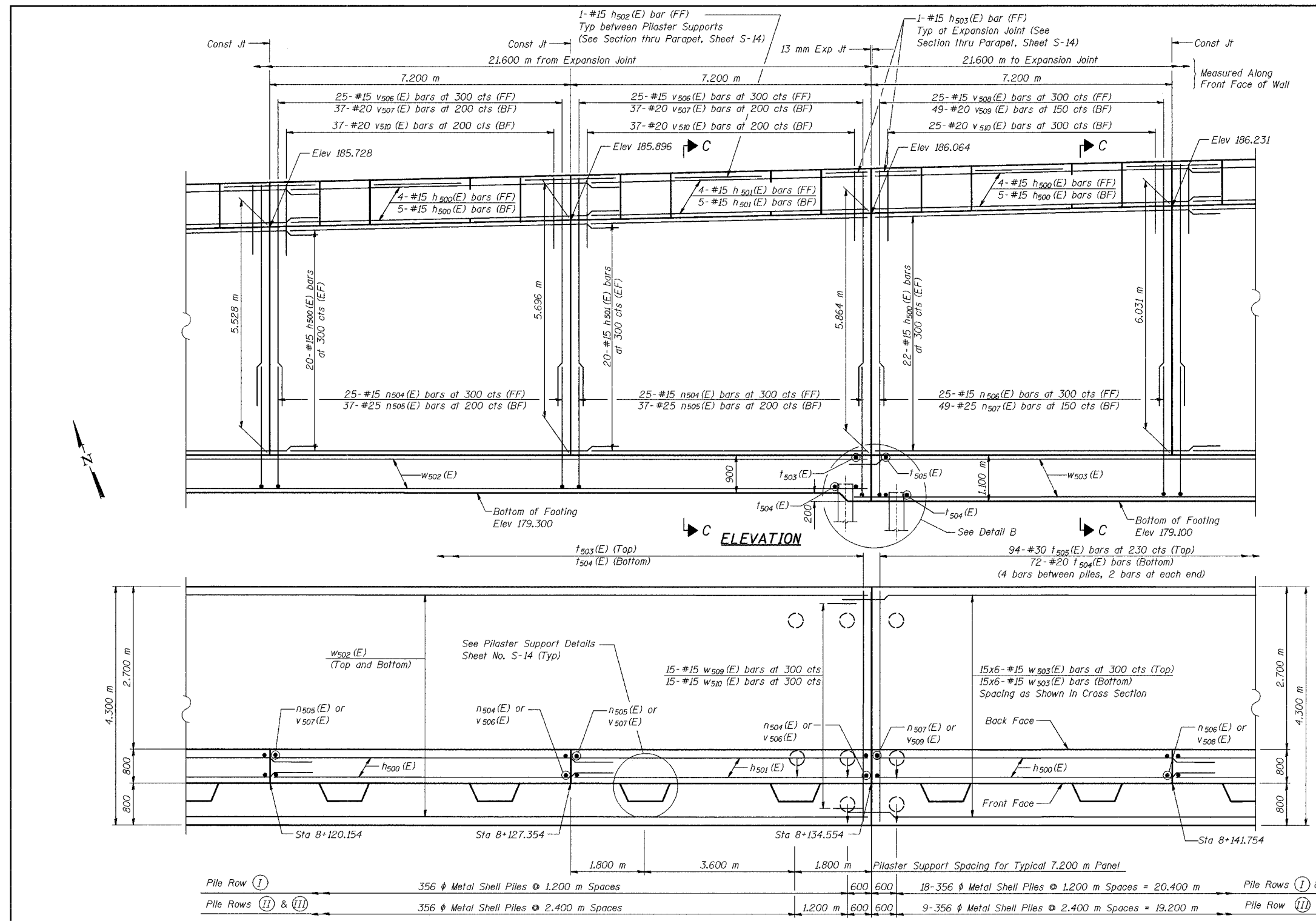


| | | | | |
|-----------|------------|----------------------|-------|----------------|
| ROUTE NO. | SECTION | COUNTY | SHEET | SHEET NO. S-10 |
| F.A.S. | 2626.2-R-1 | LAKE COUNTY, INDIANA | 1207 | 1072 |
| 1987/94 | | | | 19 SHEETS |
| ILLINOIS | | FED-USD PROJECT | | |

CONTRACT NO. 62114 INDOT DES. NO. 0100987



DETAIL B

NOTES:
 See Sheet S-14 for Section C-C, Expansion Joint Detail, and Bill of Material.
 See Sheet S-15 for Rustication details.
 Stations are referenced to \pm 1-80/94.
 Reinforcement bars designated (E) shall be epoxy coated.
 All dimensions are in millimeters (mm) except as noted.
 Bars indicated thus 20x3-#15 etc., indicates 20 lines of bars with 3 lengths per line.

| | |
|----------|-----|
| DESIGNED | MJW |
| CHECKED | KFA |
| DRAWN | MJB |
| CHECKED | GSP |

FOOTING PLAN

MINIMUM BAR LAPS
 #15 bars = 640
 #20 bars = 790

LEGEND
 BF = Back Face
 FF = Front Face
 EF = Each Face

ILLINOIS DEPARTMENT OF TRANSPORTATION
 I-80/94/US 6
 KINGERY-BORMAN EXPRESSWAY
 BURNHAM ROAD TO US 41

PLAN AND ELEVATION (8 OF 11)
 SECTION 2626.2-R-1
 LAKE COUNTY, INDIANA
 STATION 7+960.424 TO STATION 8+199.354
 STRUCTURE NO. 016-W922

DATE 07/05

AMERICAN
 CONSULTING ENGINEERS

FOR INFORMATION ONLY