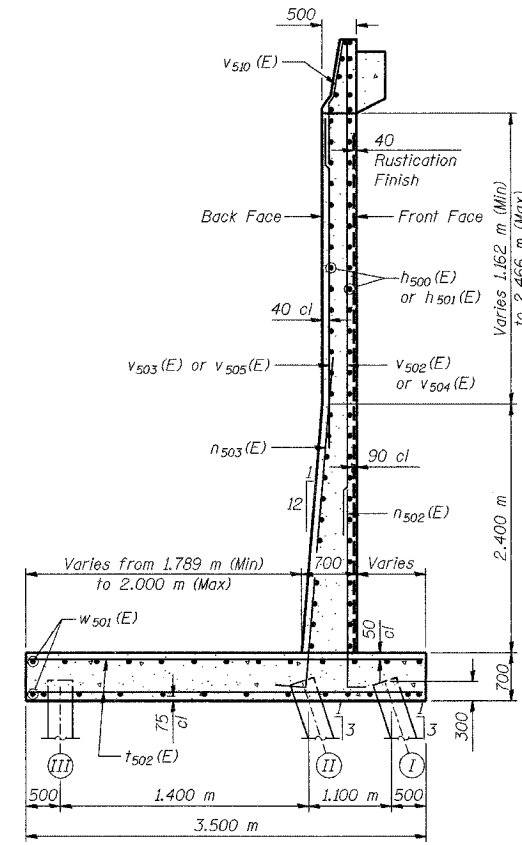
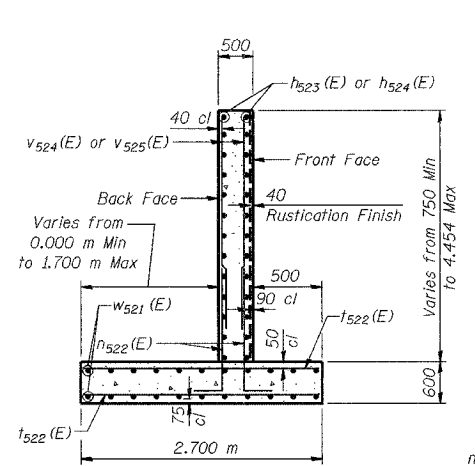


**SECTION A-A**

**NOTES:**  
 See Sheet S-15 for Rustication details.  
 Reinforcement bars designated (E) shall be epoxy coated.  
 All dimensions are in millimeters (mm) except as noted.  
 See Typical Section on Sheet S-2 for Drainage Details and Surface Seal Limits.



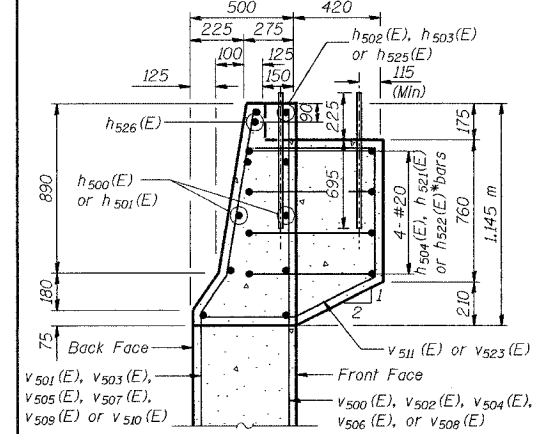
**SECTION B-B**



**SECTION D-D**

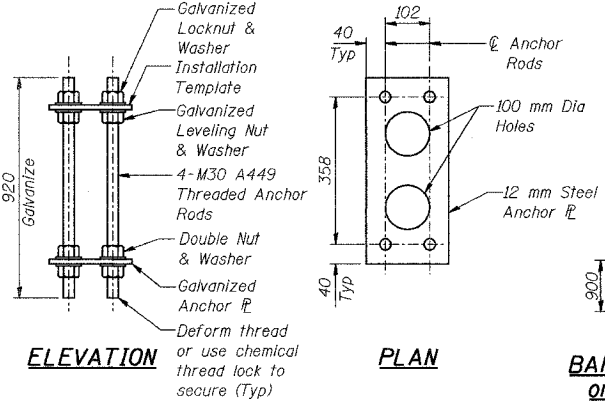
**PILE DATA**  
 Type - 356  $\phi$  Metal Shell  
 Capacity - 500 kN  
 Est. Length - 12.2 m  
 No. Req'd - 329 (Phase 2)  
 - 20 (Phase 3)  
 Test Piles - 4

**BARS w506(E), w508(E) or w510(E)**



**SECTION THRU PARAPET**

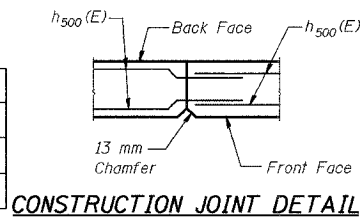
\* h522(E) bars robe placed in pilaster at Sta 8+207.563



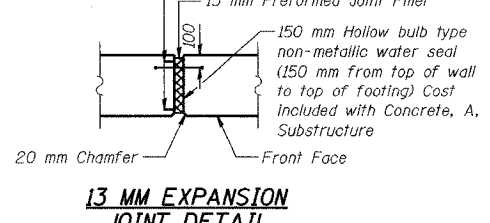
**NOISE ABATEMENT WALL ANCHOR ROD ASSEMBLY**

(66 Req'd Phase 2)  
 (3 Req'd Phase 3)

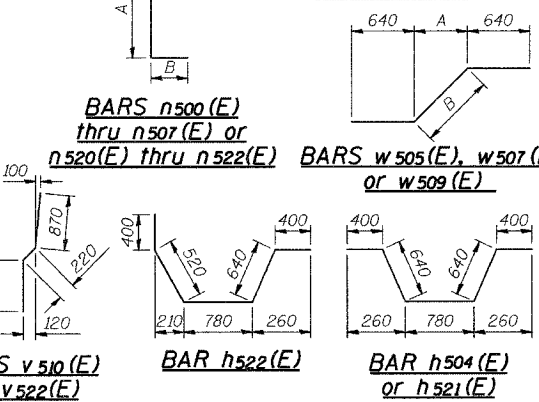
DESIGNED	KFA
CHECKED	BPS
DRAWN	MJB
CHECKED	GSP



**CONSTRUCTION JOINT DETAIL**



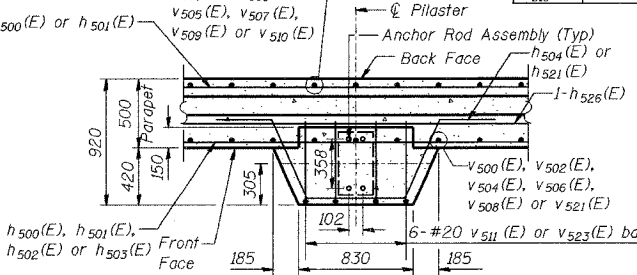
**13 MM EXPANSION JOINT DETAIL**



**BAR v511(E) or v523(E)**

**BAR DIMENSIONS PHASE 2**

Bar	A	B
n500(E)	1.75 m	260
n501(E)	1.75 m	320
n502(E)	3.23 m	260
n503(E)	3.23 m	400
n504(E)	4.63 m	260
n505(E)	4.63 m	400
n506(E)	4.83 m	260
n507(E)	4.83 m	400
w505(E)	2.65 m	1.88 m
w506(E)	1.88 m	-
w507(E)	1.10 m	780
w508(E)	780	-
w509(E)	1.38 m	980
w510(E)	980	-



**TYPICAL PILASTER SUPPORT - PLAN VIEW**

(66 Locations - Phase 2)  
 (3 Locations - Phase 3)

**BILL OF MATERIAL (PHASE 3)**

Bar	No.	Size	Length (m)	Shape
h520(E)	55	#15	8.11	—
h521(E)	8	#20	2.86	—
h522(E)	4	#20	2.74	—
h523(E)	32	#15	9.40	—
h524(E)	2	#15	8.46	—
h525(E)	2	#15	9.46	—
h526(E)	3	#15	2.11	—
n520(E)	28	#15	5.09	L
n521(E)	55	#25	5.23	L
n522(E)	70	#15	1.47	L
t520(E)	42	#25	3.80	—
t521(E)	28	#20	3.80	—
t522(E)	79	#20	3.20	—
v520(E)	28	#15	4.52	—
v521(E)	55	#20	3.52	—
v522(E)	28	#20	1.99	—
v523(E)	18	#20	2.47	—
v524(E)	14	#15	4.36	—
v525(E)	28	#15	4.99	—
w520(E)	30	#15	8.11	—
w521(E)	24	#15	9.40	—

**BILL OF MATERIAL (PHASE 2)**

Bar	No.	Size	Length (m)	Shape
h500(E)	925	#15	7.84	—
h501(E)	516	#15	7.10	—
h502(E)	54	#15	2.30	—
h503(E)	24	#15	1.10	—
h504(E)	264	#20	2.86	—
n500(E)	200	#15	2.01	L
n501(E)	280	#20	2.07	L
n502(E)	250	#15	3.49	L
n503(E)	300	#25	3.63	L
n504(E)	150	#15	4.89	L
n505(E)	222	#25	5.03	L
n506(E)	225	#15	5.09	L
n507(E)	441	#25	5.23	L
t500(E)	341	#25	3.90	—
t501(E)	195	#20	3.90	—
t502(E)	601	#20	3.40	—
t503(E)	167	#25	4.20	—
t504(E)	360	#20	4.20	—
t505(E)	284	#30	4.20	—
v500(E)	200	#15	4.08	—
v501(E)	280	#20	3.08	—
v502(E)	100	#15	3.14	—
v503(E)	120	#20	2.14	—
v504(E)	150	#15	4.00	—
v505(E)	180	#20	3.01	—
v506(E)	150	#15	3.80	—
v507(E)	222	#20	2.80	—
v508(E)	225	#15	4.77	—
v509(E)	441	#20	3.77	—
v510(E)	802	#20	1.99	—
v511(E)	396	#20	2.47	—
w500(E)	196	#15	8.78	—
w501(E)	234	#15	8.57	—
w502(E)	180	#15	7.82	—
w503(E)	180	#15	7.93	—
w504(E)	90	#15	7.60	—
w505(E)	15	#15	3.93	—
w506(E)	15	#15	3.76	—
w507(E)	13	#15	2.38	—
w508(E)	13	#15	1.56	—
w509(E)	15	#15	2.66	—
w510(E)	15	#15	1.96	—
Test Pile, 356 mm	Each		4	—

Excavation, Foundation, Unclassified m<sup>3</sup> 491.4  
 Concrete, A, Substructure m<sup>3</sup> 99.8  
 Reinforcing Bars, Epoxy Coated kg 6,190  
 Surface Seal L Sum 0.01  
 Pile, Concrete, Steel Shell Encased, 6.35 mm, 356 mm Geocomposite Wall Drain m<sup>2</sup> 73  
 Pipe, Underdrain, Perf, 1.63 mm, 150 mm m 17.7  
 Noise Abatement Wall Anchor Rod Assembly Each 3  
 B Borrow m<sup>3</sup> 76.7  
 Structural Backfill m<sup>3</sup> 479.3  
 Masonry Coating L Sum 0.06

The estimated Phase 3 Masonry Coating area is 375.9 m<sup>2</sup>  
 The estimated Phase 3 Surface Seal area is 14.9 m<sup>2</sup>

**BAR DIMENSIONS - PHASE 3**

Bar	A	B
n500(E)	4.83 m	260
n501(E)	4.83 m	400
n502(E)	1.21 m	260

The estimated Phase 2 Surface Seal area is 361 m<sup>2</sup>

ILLINOIS DEPARTMENT OF TRANSPORTATION  
 I-80/94/US 6  
 KINGERY-BORMAN EXPRESSWAY  
 BURNHAM ROAD TO US 41  
**WALL SECTIONS AND DETAILS**  
 SECTION 2626.2-R-1  
 LAKE COUNTY, INDIANA  
 STATION 8+199.354 TO STATION 8+215.315  
 STRUCTURE NO. 016-W922  
 DATE 09/05  
**AMERICAN**  
 CONSULTING ENGINEERS

**FIELD CUTTING DIAGRAM**

Order bars full length. Cut to fit as shown.  
 Use remainder of bars in opposite face.