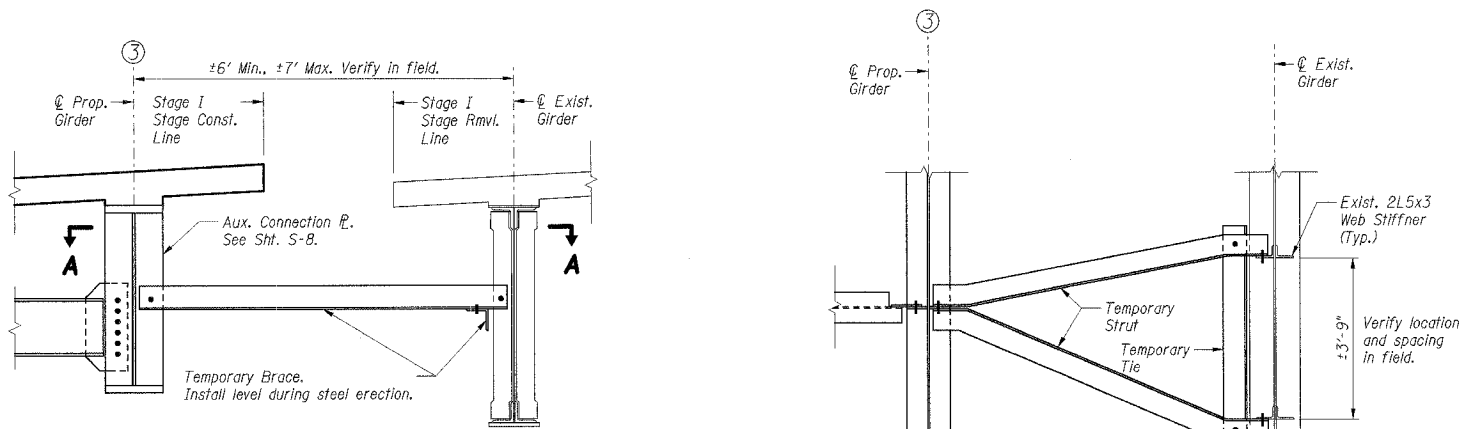


F.A.I. ROUTE	SECTION	COUNTY	TOTAL SHEETS	SHEET NO.
57	2323.1F	COOK	011	5
STA.	TO STA.			
FED. ROAD DIST. NO.	ILLINOIS	FED. AID PROJECT		

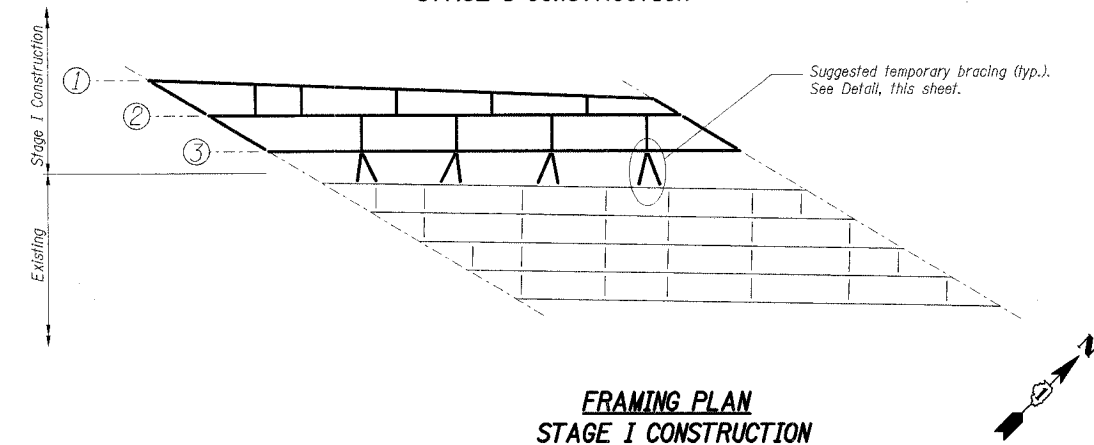
CONTRACT NO. 62815



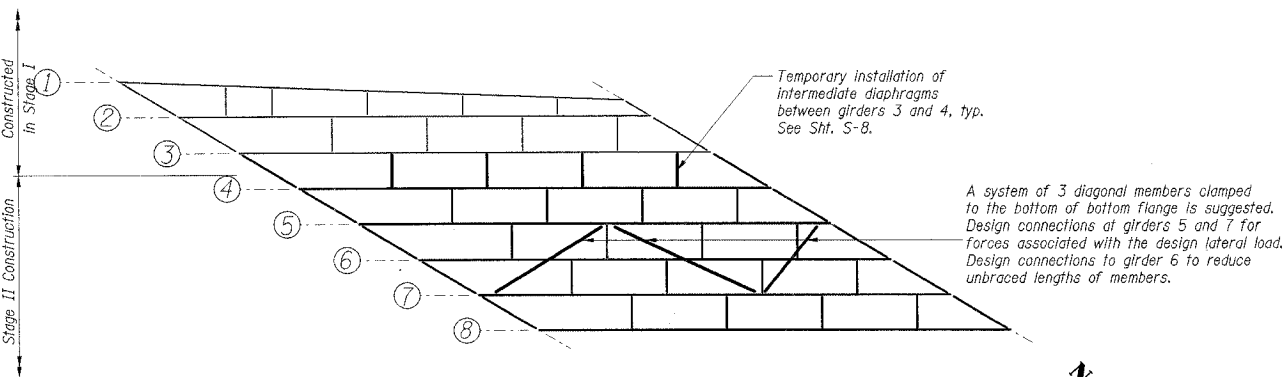
**SECTION
AT STAGE CONSTRUCTION LINE**

PLAN SECTION A-A

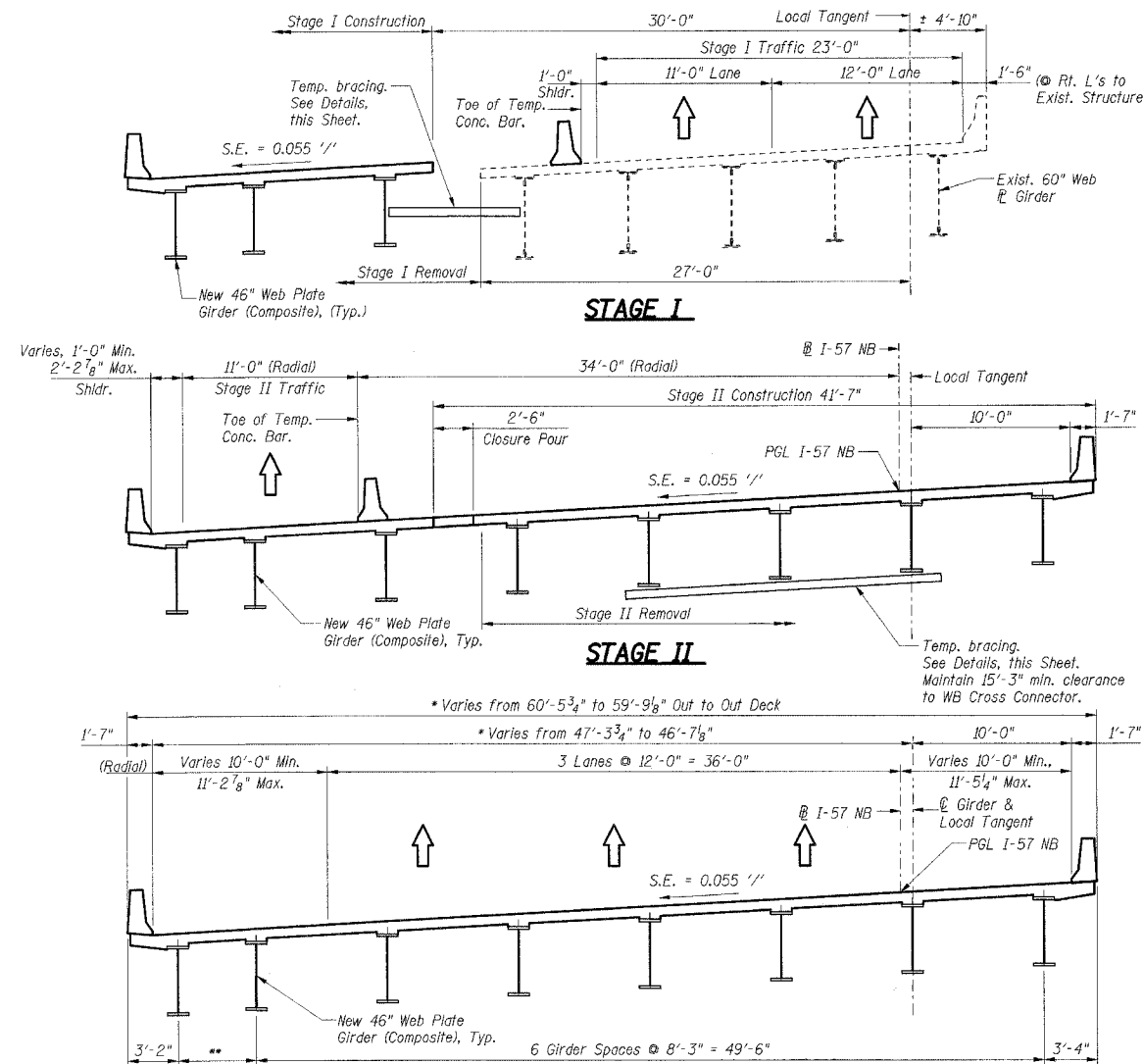
**SUGGESTED TEMPORARY BRACE DETAIL
STAGE I CONSTRUCTION**



**FRAMING PLAN
STAGE I CONSTRUCTION**



**FRAMING PLAN
STAGE II CONSTRUCTION**



PROPOSED CROSS SECTION

*Measured at Stations 238+28.46 & 238+47.20
**Varies from 8'-3" @ Brg. S. Abut. to 3'-9" @ Brg. N. Abut.

CONSTRUCTION STAGING

(All dimensions at Rt. L's to Local Tangent to @ I-57 NB @ Sta. 238+66.94 unless otherwise noted)

FOR INFORMATION ONLY
NOT PART OF THIS CONTRACT

SHT. S-3

REVISIONS		
NO.	NAME	DATE
1	TCU	11/23/05

ILLINOIS DEPARTMENT OF TRANSPORTATION
F.A.I. ROUTE 57 (INTERSTATE 57)
BEAM & BEARING FABRICATION
I-57 NB OVER WB CONNECTOR
EXISTING SN 016-0072, PROPOSED SN 016-2852
STA. 238+73.54, COOK COUNTY, SECTION 2323.1F
CONSTRUCTION STAGING

DATE: 10/20/05
DRAWN BY: VV
CHECKED BY: TCU

TENG

TENG & ASSOCIATES, INC.
ENGINEERS/ARCHITECTS/PLANNERS
306 N. MICHIGAN AVE., CHICAGO, IL 60601
TELEPHONE 312.461.0000

Note:

The Contractor shall furnish and install a temporary lateral bracing system for each stage of deck construction. Working drawings and calculations for the temporary bracing shall be submitted to the Engineer for review and approval. The drawings shall provide full details, dimensions and types of materials, and shall be prepared and sealed by an Illinois Licensed Structural Engineer.

For each stage of construction, the bracing shall provide a minimum horizontal reaction equivalent to 2% of dead load of steel and deck concrete plus all live loads associated with deck placement.

For Stage I construction, the existing structure may be used to provide the bracing reaction. For a suggested system of discrete braces, see details on this sheet. For Stage II construction, the bracing shall be internal to the Stage II framing; the structure completed in Stage I shall not be used to provide the bracing reaction. For a suggested system of lower lateral bracing, see details on this sheet.

The temporary bracing systems shall be erected with the steel and shall remain in place for 7 days after deck casting. Temporary bracing shall be removed, and steel coatings touched up in accordance with the Special Provision for Erecting Structural Steel and Elastomeric Bearings.

Cost for designing, furnishing, installing and removing the temporary lateral bracing shall be included with Erecting Structural Steel.

X:\C0500156\DRAWING\0500156.DWG, X:\C0500156\DRAWING\0500156.DWG, X:\C0500156\DRAWING\0500156.DWG, X:\C0500156\DRAWING\0500156.DWG, X:\C0500156\DRAWING\0500156.DWG, X:\C0500156\DRAWING\0500156.DWG
 11/25/2005 11:48:42 PLUCHEMBERT\H030860\STRUCTURE\CONSTRUCTION\0500156.DWG