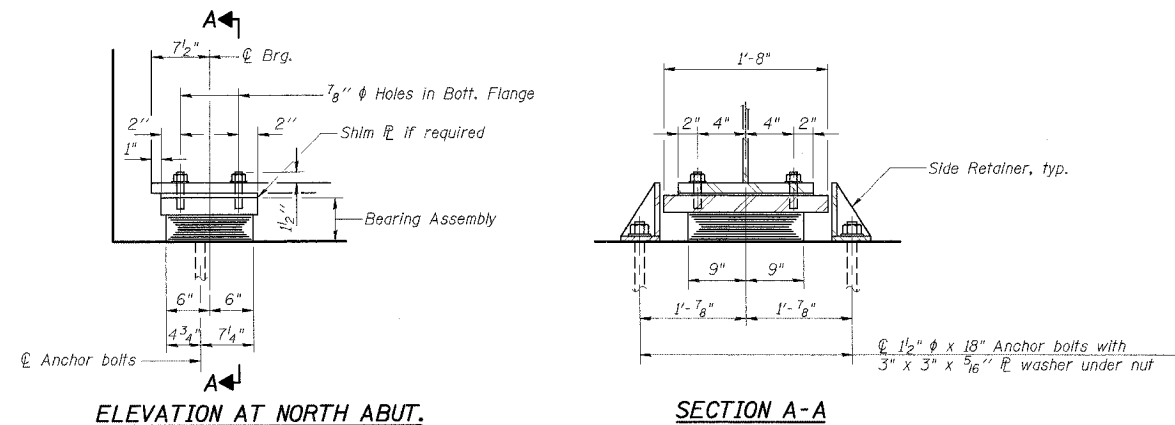


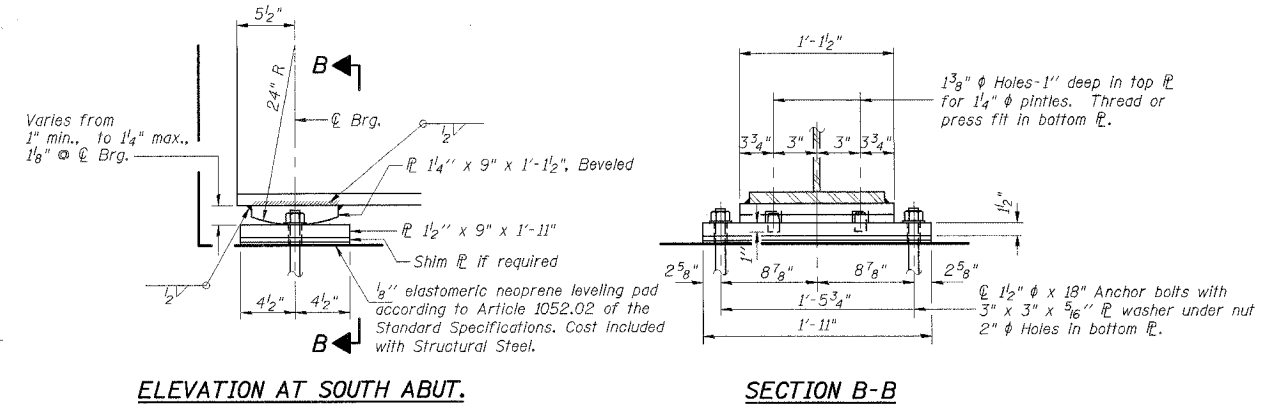
F.A.I. RTE.	SECTION	COUNTY	TOTAL SHEETS	SHEET NO.
57	2323.1F	COOK	011	11
STA.		TO STA.		
FED. ROAD DIST. NO.		ILLINOIS FED. AID PROJECT		

CONTRACT NO. 62815



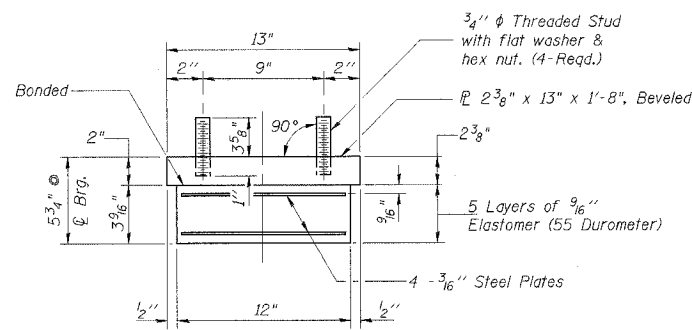
TYPE I ELASTOMERIC EXP. BRG.

Notes: Anchor bolts at fixed bearings may be built into the masonry.

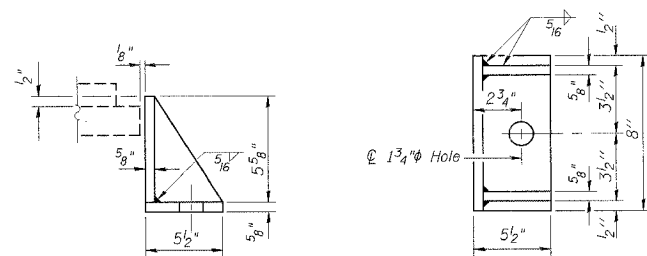
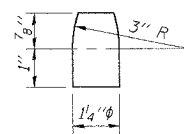


FIXED BEARING

No. Required = 8



Note: Shim plates shall not be placed under Bearing Assembly.



Equivalent rolled angle with stiffeners will be allowed in lieu of welded plates. Weight included with Structural Steel.

BILL OF MATERIAL

Item	Unit	Total
Furnishing Elastomeric Bearing Assembly Type I	Each	8

Notes:

- The orientation of the bearings in the field shall be coordinated with the slope of the girders.
- All threaded studs shall be AASHTO M164 (A325).
- All steel bearing plates shall be AASHTO M270 Grade 50.
- The fixed steel bearings including the shim plates shall be included with Structural Steel.
- Structural Steel and Elastomeric Bearings shall be fabricated and erected under separate contracts and shall be paid for according to the Special Provisions Furnishing Structural Steel and Elastomeric Bearings and Erecting Structural Steel and Elastomeric Bearings and Sections 503 and 505 of the Standard Specifications.
- Anchor bolts furnished and installed by the erection Contractor as part of the erection contract.

SHT. S-9

REVISIONS	
NAME	DATE

ILLINOIS DEPARTMENT OF TRANSPORTATION
F.A.I. ROUTE 57 (INTERSTATE 57)
BEAM & BEARING FABRICATION
I-57 NB OVER WB CONNECTOR
EXISTING SN 016-0072, PROPOSED SN 016-2852
STA. 238+73.54, COOK COUNTY, SECTION 2323.1F
BEARING DETAILS

DATE: 10/20/05
DRAWN BY: VV
CHECKED BY: RDS

TENG
TENG & ASSOCIATES, INC.
ENGINEERS/ARCHITECTS/PLANNERS
208 N. MICHIGAN AVE., CHICAGO, IL 60601
TEL: 312.467.0000