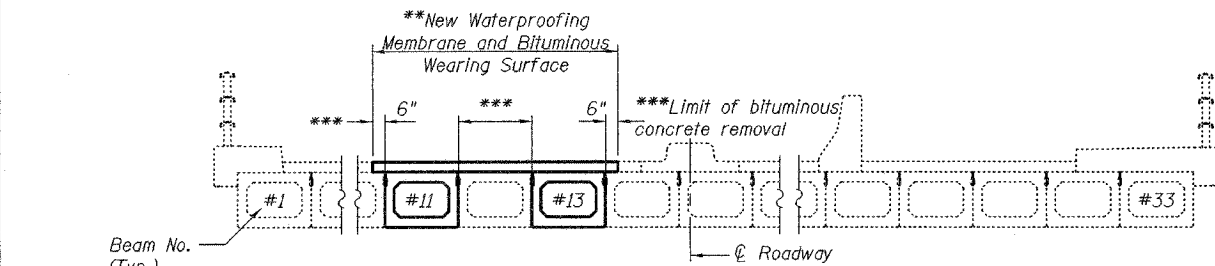


STATE OF ILLINOIS
DEPARTMENT OF TRANSPORTATION

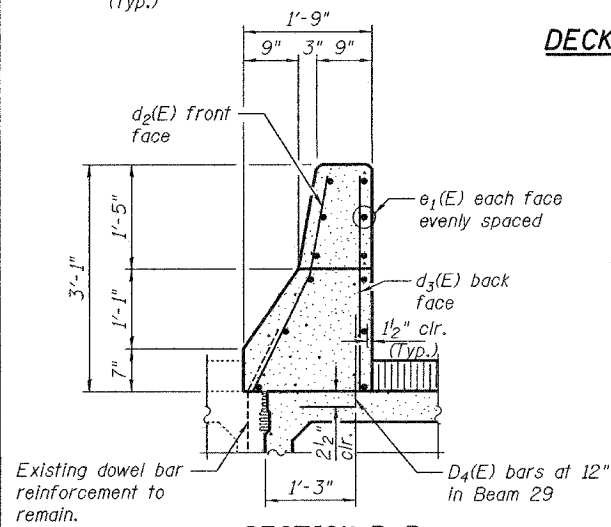
ROUTE NO.	SECTION	COUNTY	SHEET NO.	SHEET
		DuPage	14	12
Contract Number: 62912				

SHEET NO. 2
4 SHEETS



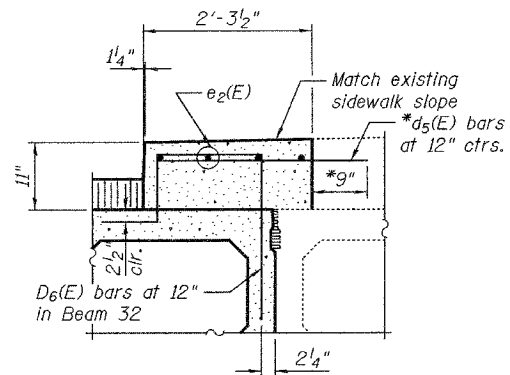
DECK CROSS SECTION
SPAN #1
(Looking East)

MIN. BAR LAP
#5 = 2'-2"

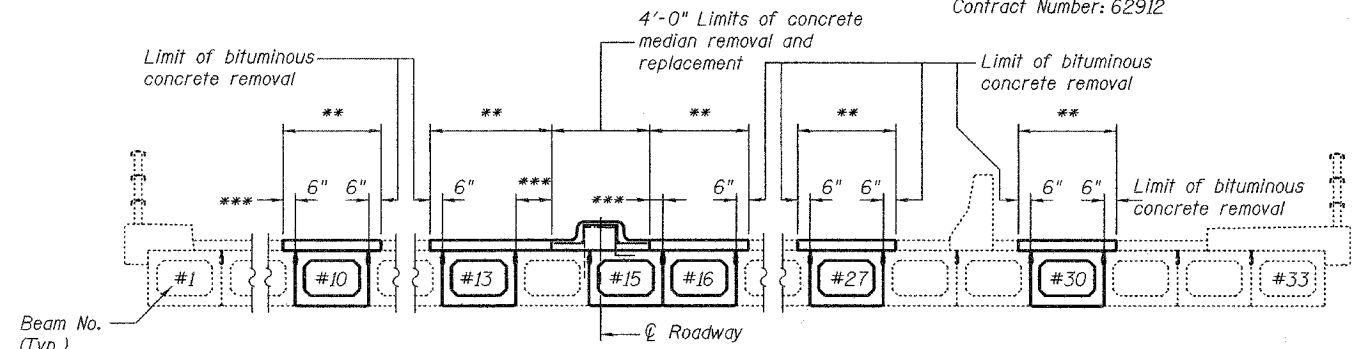


SECTION B-B

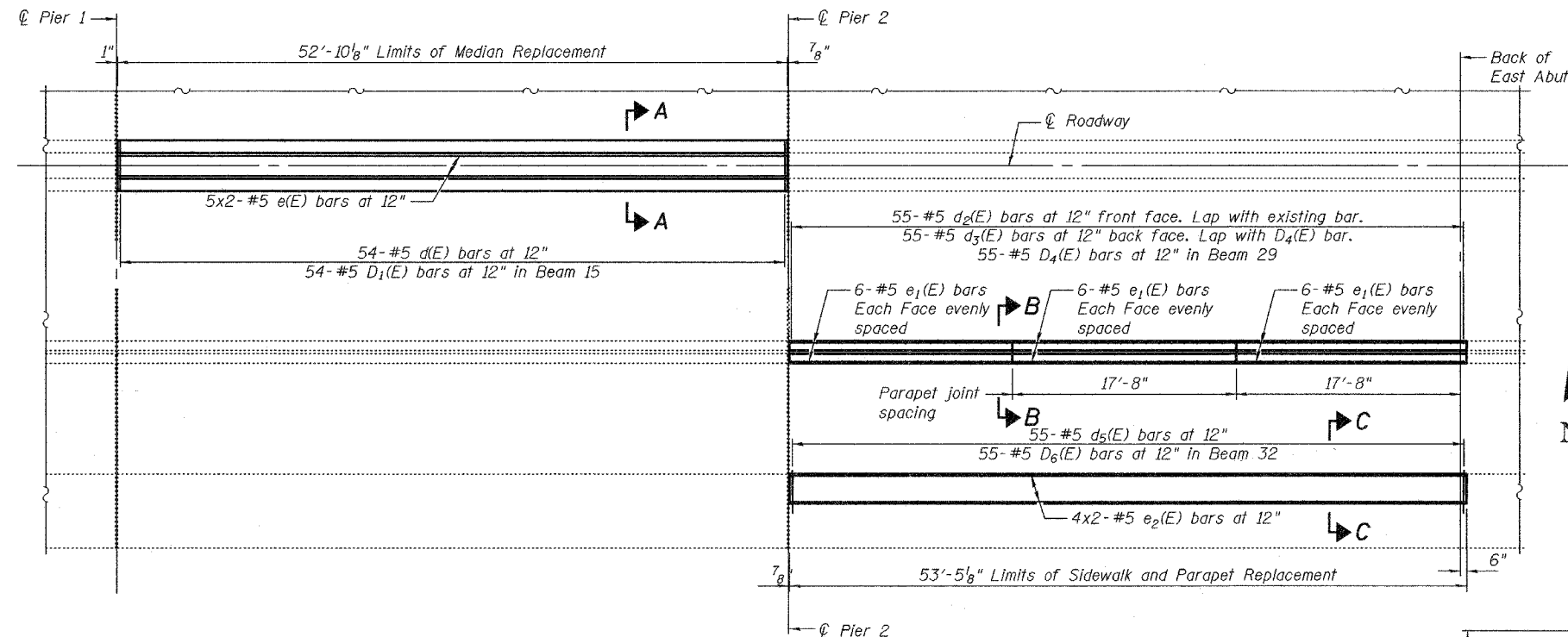
*Epoxy grout in accordance with Article 584 of the Standard Specifications. Cost included with Reinforcing Bars, Epoxy Coated.



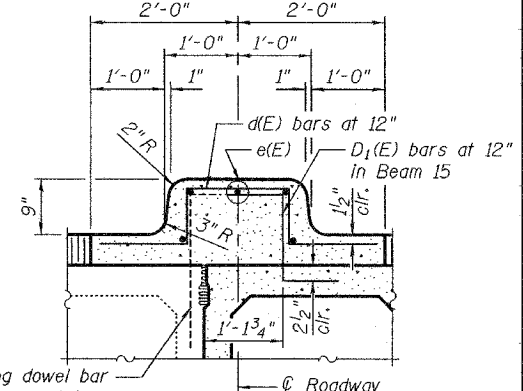
SECTION C-C



DECK CROSS SECTION
SPAN #2
(Looking East)



PARTIAL DECK PLAN

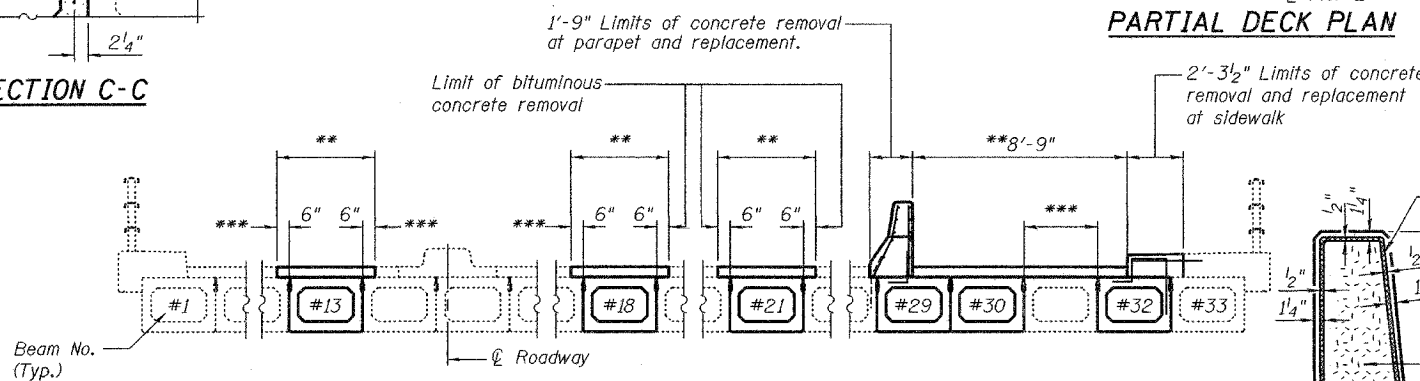


SECTION A-A

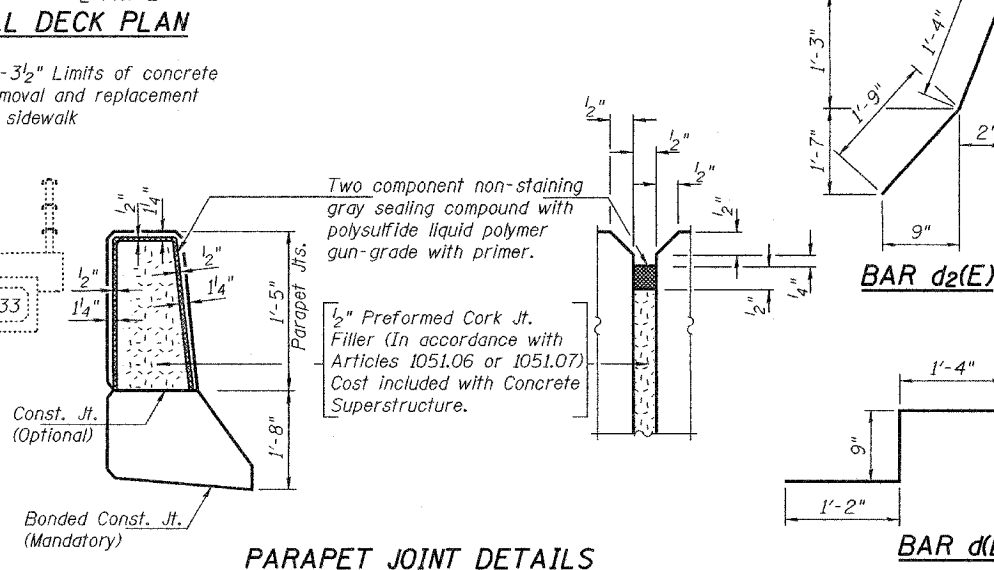
BILL OF MATERIAL

Bar	No.	Size	Length	Shape
d(E)	54	#5	5'-2"	
d2(E)	55	#5	3'-1"	
d3(E)	55	#5	2'-11"	
d5(E)	55	#5	2'-10"	
e(E)	10	#5	27'-6"	
e1(E)	36	#5	17'-5"	
e2(E)	8	#5	27'-10"	
Concrete Removal			Cu. Yd.	16.8
Concrete Superstructure			Cu. Yd.	18.7
Reinforcement Bars, Epoxy Coated			Lbs.	1970

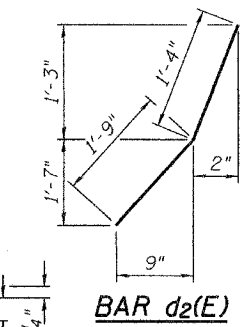
Reinforcement bars designated (E) shall be epoxy coated.
Bars indicated thus 1 x 2-#5 etc. indicates 1 line of bars with 2 lengths per line.



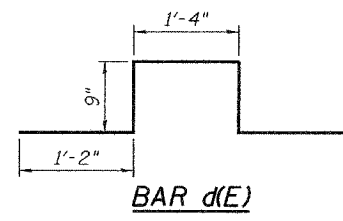
DECK CROSS SECTION
SPAN #3
(Looking East)



PARAPET JOINT DETAILS



BAR d2(E)



BAR d(E)

DESIGNED	V.H.V.
CHECKED	A.T.H.
DRAWN	Drew Christopher
CHECKED	V.H.V. A.T.H.

EXAMINED	John A. Morris ENGINEER OF STRUCTURAL SERVICES
PASSED	Ralph E. Anderson ENGINEER OF BRIDGES AND STRUCTURES

May 3, 2005

**DECK CROSS SECTIONS
AND DECK DETAILS**
F.A.U. RT. 9877
DUPAGE COUNTY
SN 022-0084