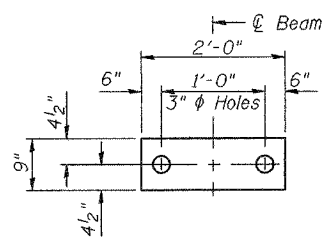
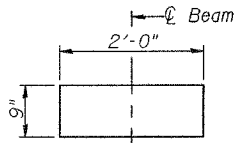


STATE OF ILLINOIS  
DEPARTMENT OF TRANSPORTATION

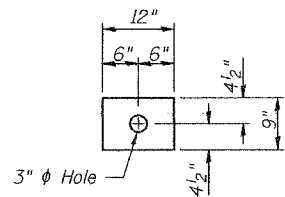
ROUTE NO.	SECTION	COUNTY	DISTRICT	SHEET NO.	SHEET NO. 3 4 SHEETS
		DuPage	14	13	
Contract Number: 62912					



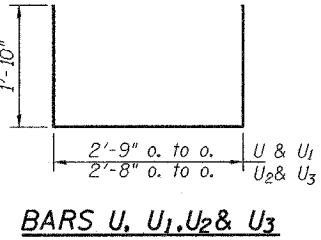
FABRIC BEARING PAD  
(Interior)  
**FIXED**



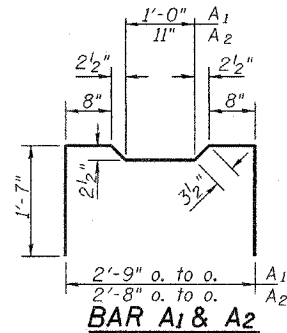
FABRIC BEARING PAD  
(Interior)  
**EXPANSION**



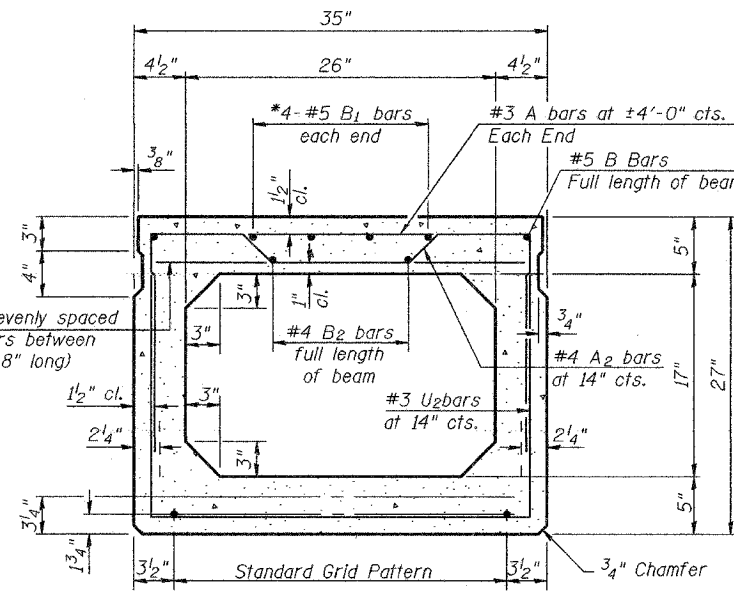
FABRIC ADJUSTING SHIM  
(Fixed)



BARS U, U1, U2 & U3

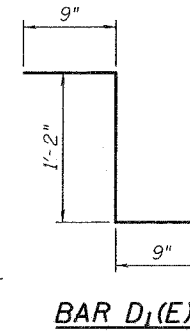


BAR A1 & A2



TYPICAL 35" SECTION

1/2"  $\phi$  Strands, Each Strand Stressed to 30,900 Lbs.  
8-Strands 1 3/4" up, 4-Strands 3/4" up  
(12 Required)

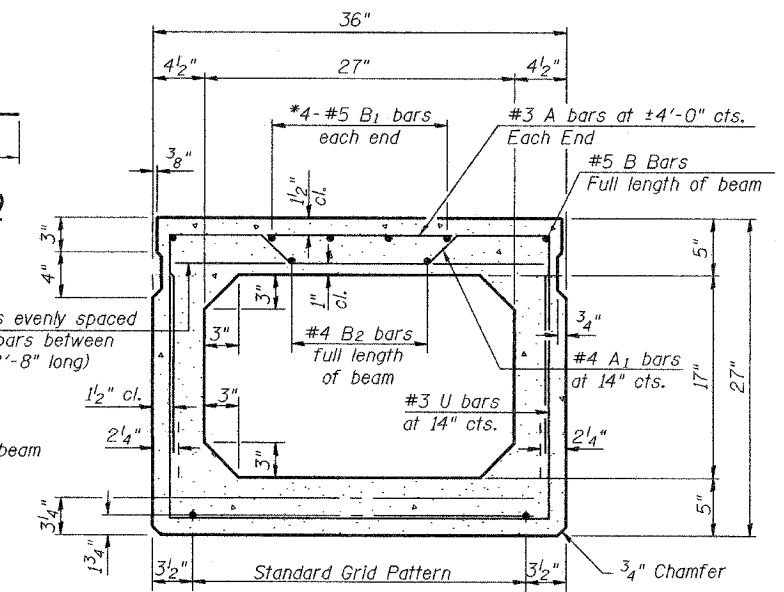


BAR D1(E)

2-#3 A bars evenly spaced  
between A1 bars between  
end blocks (2'-8" long)

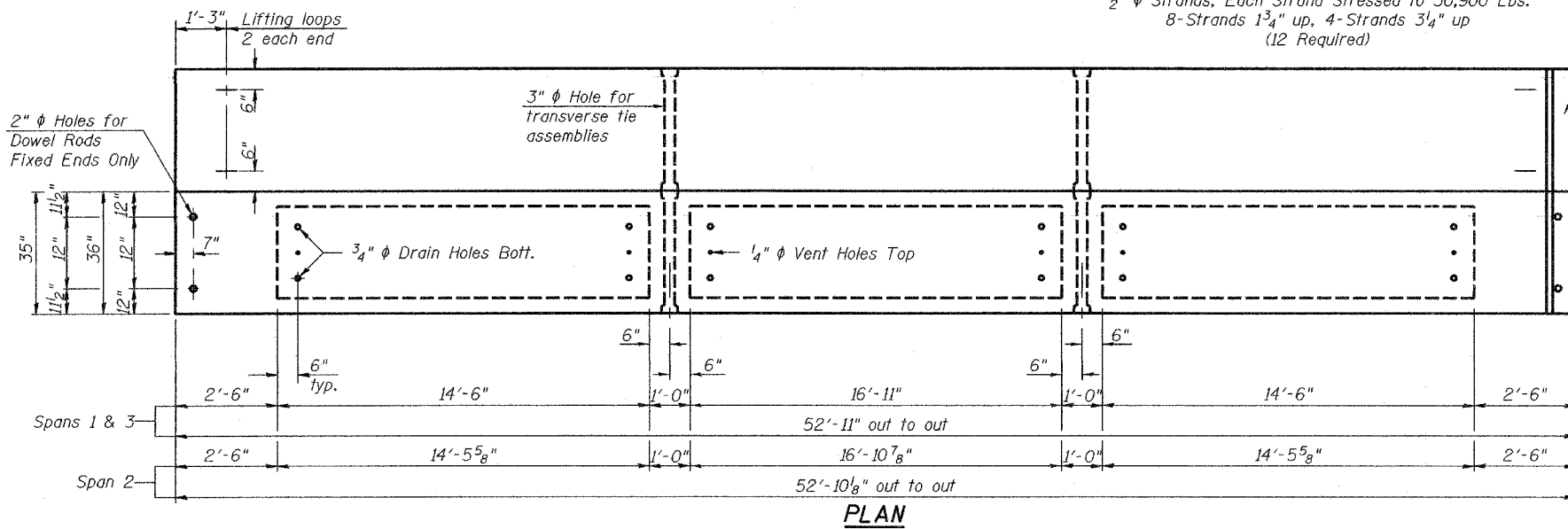
\*0.2 x Length of beam

Note:  
Place strands symmetrically  
about  $\phi$  of beam.

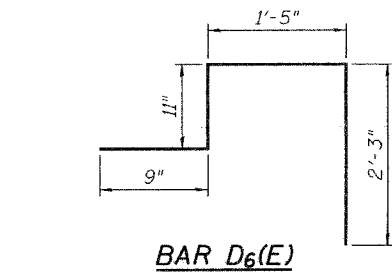


TYPICAL 36" SECTION

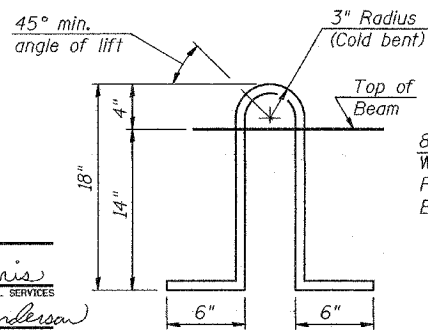
1/2"  $\phi$  Strands, Each Strand Stressed to 30,900 Lbs.  
8-Strands 1 3/4" up, 4-Strands 3/4" up  
(2 Required)



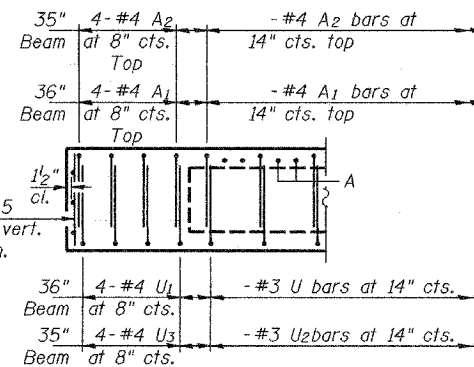
PLAN



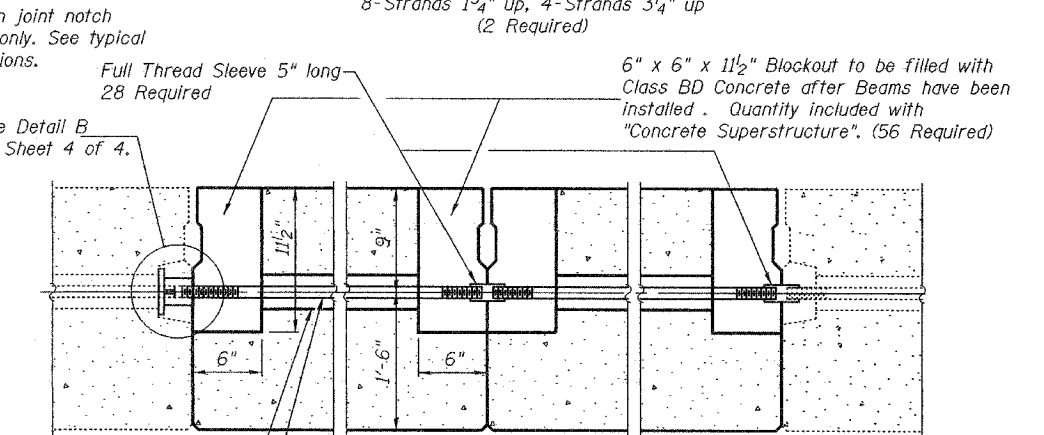
BAR D6(E)



LIFTING LOOP DETAIL



END ELEVATION  
FIXED END



TYPICAL TRANSVERSE TIE ASSEMBLY

BAR D4(E)

NOTES

Prestressing steel shall be uncoated high strength, low relaxation 7-wire strand, Grade 270. The nominal diameter shall be 1/2" and the nominal cross-sectional area shall be 0.153 sq. in. Lifting loops shall be 2-1/2"  $\phi$  270 ksi strands, as shown. The 1"  $\phi$  rods in the transverse tie assembly shall be tightened to a snug fit and the threads set. Pockets that receive transverse tie bar on outside shall be filled with grout after transverse tie assembly is in place. Non prestressing steel shall conform to AASHTO M-31 or M322 Grade 60. The bearing seat surfaces shall be adjusted by shimming to assure firm and even bearing. Two 1/8" fabric adjusting shims of the dimensions shown shall be provided for each bearing. Keyway surfaces shall be cleaned to remove form oil or other bond breaking material prior to shipment of the beams. Cleaning shall be done by sandblasting the keyway areas between top of the beam and the bottom edge of the key. Corrosion Inhibitor, as covered in the Special Provisions, shall be used in the concrete for precast prestressed concrete deck beams. Required Release Strength, f'ci, shall be 4000 p.s.i.

BILL OF MATERIAL

Bar	No.	Size	Length	Shape
a(E)	42	#5	2'-11"	
a1(E)	9	#5	5'-11"	
Precast Prestressed Conc. Deck Bms.		Sq. Ft.	2169	
Reinforcing Bars, Epoxy Coated		Pound	180	

BEAM DETAILS  
F.A.U. RT. 9877  
OVER SALT CREEK  
DUPAGE COUNTY  
SN 022-0084

DESIGNED	V.H.V.
CHECKED	A.T.H.
DRAWN	Drew Christopher
CHECKED	V.H.V. A.T.H.

EXAMINED	John A. Morris ENGINEER OF STRUCTURAL SERVICES
PASSED	Ralph E. Anderson ENGINEER OF BRIDGES AND STRUCTURES

PD-5-S 10-22-04