

F.A.P. RTE.	F.A.U. RTE.	SECTION	COUNTY	TOTAL SHEETS	SHEET NO.
343	1453	2005-005BR	COOK/DUPAGE	14	1

+1
= 15 Total Sheets

STATE OF ILLINOIS
DEPARTMENT OF TRANSPORTATION
DIVISION OF HIGHWAYS

**PROPOSED
HIGHWAY PLANS**

LOCATION 1: FAP 343: IL 68 (DUNDEE RD.)
OVER WHEELING DRAINAGE DITCH (SN 016-0525)
LOCATION 2: FAU 1453: 22ND STREET
OVER SALT CREEK (SN 022-0084)
SECTION 2005-005BR
PCC DECK BEAM REPLACEMENT
COOK AND DUPAGE COUNTIES
C-91-119-05

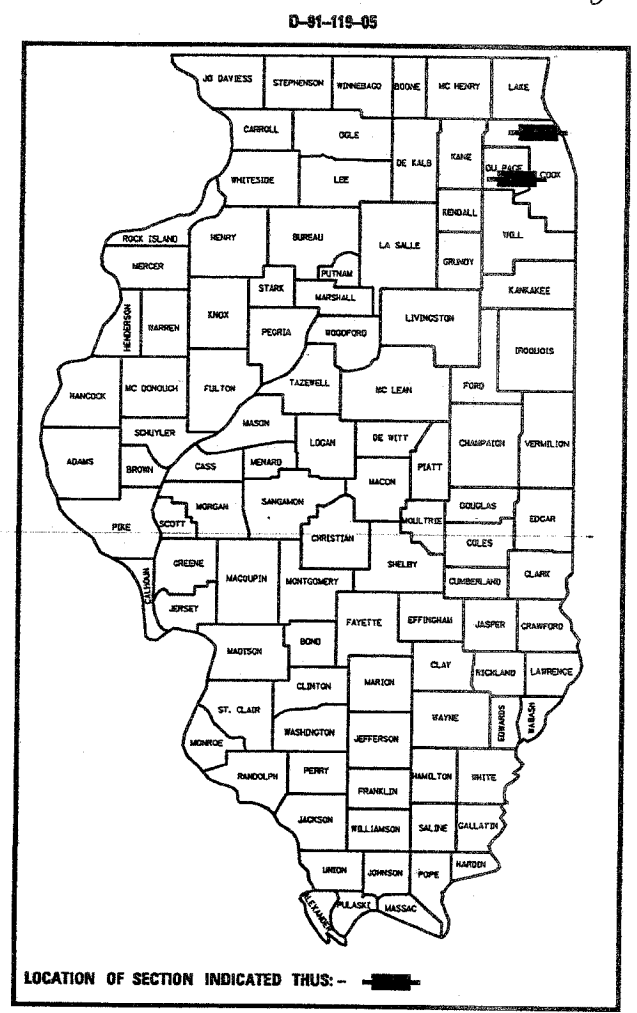
FOR INDEX OF SHEETS, SEE SHEET NO. 2

TRAFFIC DATA

LOCATION 1:
ADT (2004) = 30400
SPEED LIMIT = 35 MPH

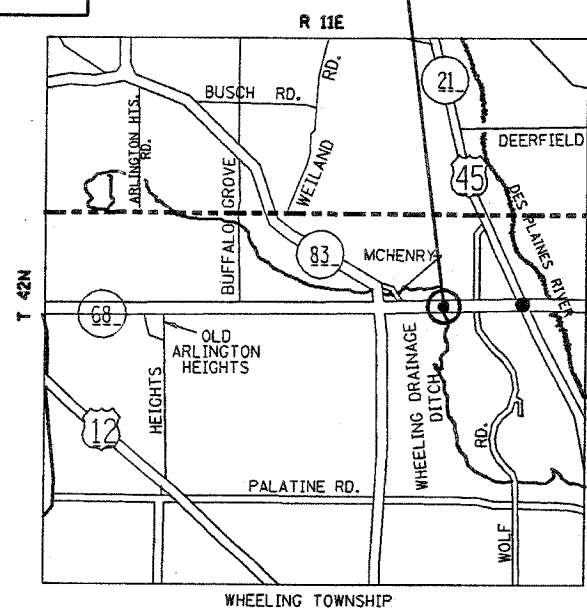
LOCATION 2:
ADT (2001) = 32200
SPEED LIMIT = 25 MPH

IMPROVEMENTS LOCATED IN THE
VILLAGES OF WHEELING AND OAK BROOK

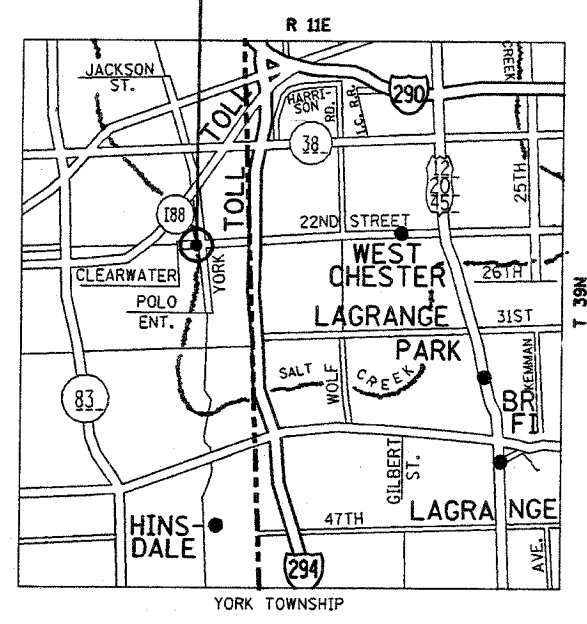


LOCATION OF SECTION INDICATED THUS: - [black rectangle] -

LOCATION 1
IL 68 OVER
WHEELING DRAINAGE DITCH
SN 016-0525



LOCATION 2
22ND STREET OVER SALT CREEK
SN 022-0084



DISTRICT ONE DESIGN PLAN PREPARATION
KEN ENG/ROBERT BORO (847) 705-4178

J.U.L.I.E.
JOINT UTILITY LOCATION INFORMATION FOR EXCAVATION
1-800-892-0123

CONTRACT NO. 62912

STATE OF ILLINOIS
DEPARTMENT OF TRANSPORTATION
DIVISION OF HIGHWAYS

SUBMITTED April 18 20 05
Dave Oke
DEPUTY DIRECTOR OF HIGHWAYS, REGION ENGINEER

May 13 20 05
Mike Hine
ENGINEER OF DESIGN AND ENVIRONMENT

May 13 20 05
Victor Maden
DIRECTOR OF HIGHWAYS, CHIEF ENGINEER

**PRINTED BY THE AUTHORITY
OF THE STATE OF ILLINOIS**

F.A.P. RTE.	F.A.U. RTE.	SECTION	COUNTY	TOTAL SHEETS	SHEET NO.
343	1453	2005-005BR	COOK/DUPAGE	14	2
STA.		TO STA.			
FED. ROAD DIST. NO.		ILLINOIS	FED. AID PROJECT		

INDEX OF SHEETS

1. COVER PAGE
2. INDEX OF SHEETS, GENERAL NOTES, STATE STANDARDS
3. SUMMARY OF QUANTITIES
- 4.-6. STAGING PLANS
- 7.-10. BRIDGE PLANS (LOC. 1: SN 016-0525)
- 11.-14. BRIDGE PLANS (LOC. 2: SN 022-0084)
- 14A. TRAFFIC CONTROL DETAIL

LIST OF STATE STANDARDS

- 701301-02 LANE CLOSURE, 2L, 2W, SHORT TIME OPERATIONS
- 701601-04 URBAN LANE CLOSURE, MULTILANE, 1W OR 2W WITH NONTRAVERSABLE MEDIAN
- 701602-02 URBAN LANE CLOSURE, MULTILANE, 2W WITH BIDIRECTIONAL LEFT TURN LANE
- 701801-03 LANE CLOSURE, MULTILANE, 1W OR 2W CORSSWALK OR SIDEWALK CLOSURE
- 704001-02 TEMPORARY CONCRETE BARRIER
- 702001-05

BITUMINOUS MIXTURE REQUIREMENTS

MIXTURE USE	AC/PG	AIR VOIDS	RAP % (MAX.)
BIT. CONC. SURFACE COURSE, SUPERPAVE MIX "D", N50	PG 64-22	4.0% @ 50 GYR.	15

NOTE: THE UNIT WEIGHT USED FOR ALL BITUMINOUS SURFACE MIXTURES IS 112 LBS./SQ.YD./IN.

GENERAL NOTES

BEFORE STARTING ANY EXCAVATION, THE CONTRACTOR SHALL CALL "J.U.L.L.E." AT (800) 892-0123 FOR FIELD LOCATIONS OF BURIED ELECTRIC, TELEPHONE AND GAS UTILITIES. 48 HOUR NOTIFICATION IS REQUIRED.

THE CONTRACTOR WILL NOT BE ALLOWED TO SET UP A YARD OR FIELD OFFICE ON STATE (OR TOLLWAY) PROPERTY WITHOUT WRITTEN PERMISSION FROM THE DEPARTMENT (OR ISTHA).

ALL DAMAGE TO EXISTING PAVEMENT MARKINGS OR RAISED REFLECTIVE PAVEMENT MARKERS OUTSIDE THE REMOVAL LINE SHOWN ON THE PLANS SHALL BE REPLACED AT THE CONTRACTOR'S EXPENSE.

BEFORE BEGINNING ANY WORK, THE CONTRACTOR SHALL RETAIN AND RECORD FOR FUTURE REFERENCE, ALL EXISTING PAVEMENT MARKING LINES AND RAISED REFLECTIVE PAVEMENT MARKERS IN ORDER THAT THESE LOCATIONS CAN BE RE-ESTABLISHED FOR STRIPING. EXACT LOCATIONS OF ALL PAVEMENT MARKINGS SHALL BE AS DIRECTED BY THE ENGINEER.

IT SHALL BE THE CONTRACTORS RESPONSIBILITY TO VERIFY ALL DIMENSIONS AND CONDITIONS EXISTING IN THE FIELD PRIOR TO CONSTRUCTION AND ORDERING OF MATERIALS.

THE CONTRATOR SHALL CONTACT THE DISTRICT ONE TRAFFIC CONTROL SUPERVISOR AT (847) 705-4470 A MINIMUM OF 72 HOURS IN ADVANCE OF BEGINNING WORK.

THE CONTRACTOR SHALL CONTACT MR. WALTER CZARNY AT (773) 685-8386 FOR WORK ON IL 68, AND MR. DON CHIARUGI AT (847) 741-9857 FOR WORK ON 22ND STREET, TWO (2) WEEKS PRIOR TO THE START OF THIS PROJECT SO THAT THE EXACT STATIONING OF NO PASSING ZONES AND OTHER PERMANENT PAVEMENT MARKINGS MAY BE ESTABLISHED.

THESE PLANS HAVE BEEN PREPARED FROM NOTES RECIEVED FROM BRIDGE INSPECTORS

THE CONTRACTOR SHALL BE REQUIRED TO PROVIDE ACCESS TO ABUTTING PROPERTY AT ALL TIMES DURING THE CONSTRUCTION OF THIS PROJECT.

DO NOT SCALE PLANS FOR CONSTRUCTION DIMENSIONS.

DOUBLE LANE MARKERS ARE TO BE USED AS SHOWN ON THE DISTRICT ONE DETAIL FOR TYPICAL APPLICATION OF RAISED REFLECTIVE PAVEMENT MARKERS (SNOW-PLOW RESISTANT) SHOWN IN THE PLANS.

THE THICKNESS OF BITUMINOUS MIXTURE SHOWN ON THE PLANS IS THE NOMINAL THICKNESS. DEVIATIONS FROM THE NOMINAL THICKNESS WILL BE PERMITTED WHEN SUCH DEVIATIONS OCCUR DUE TO IRREGULARITIES IN THE EXISTING SURFACE OR BASE ON WHICH THE BITUMINOUS MIXTURE IS PLACED.

CONCRETE SUPERSTRUCTURES SHALL HAVE A SEVEN DAY MINIMUM CURE.

REVISIONS		ILLINOIS DEPARTMENT OF TRANSPORTATION
NAME	DATE	
		INDEX OF SHEETS GENERAL NOTES MIX. REQUIREMENT CHART STATE STADARDS
SCALE: VERT. _____		DRAWN BY _____
DATE _____		

62912

F.A.P. RTE.	F.A.U. RTE.	SECTION	COUNTY	TOTAL SHEETS	SHEET NO.
343	1453	2005-005BR	COOK/DUPAGE	14	3
FED. ROAD DIST. NO. 1		ILLINOIS		HIGHWAY PROJECT	

URBAN
X080-2A

URBAN
X080-2A

SUMMARY OF QUANTITIES			TOTAL QUANTITIES	URBAN X080-2A		CONSTRUCTION TYPE CODE SFTY-2A			
CODE NO	ITEM	UNIT		LOC. 1 COOK 016-0525	LOC. 2 DUPAGE 022-0084				
44001000	BITUMINOUS CONCRETE SURFACE REMOVAL	SQ YD	110.6	10.6	100				
50102400	CONCRETE REMOVAL	CU YD	22.7	5.9	16.8				
50300255	CONCRETE SUPERSTRUCTURE	CU YD	32.2	13.5	18.7				
50300300	PROTECTIVE COAT	SQ YD	117.3	44.7	72.6				
50400405	PRECAST PRESTRESSED CONCRETE DECK BEAMS (21" DEPTH)	SQ FT	569	569					
50400505	PRECAST PRESTRESSED CONCRETE DECK BEAMS (27" DEPTH)	SQ FT	2169		2169				
50500405	FURNISHING AND ERECTING STRUCTURAL STEEL	POUND	1260		1260				
50800205	REINFORCEMENT BARS, EPOXY COATED	POUND	3560	1410	2150				
50900905	REMOVING AND RE-ERECTING EXISTING RAILING	FOOT	78	78					
58100200	WATERPROOFING MEMBRANE SYSTEM	SQ YD	358.8	51.8	305				
58300100	PORTLAND CEMENT MORTAR FAIRING COURSE	FOOT	1487	268	1219				
67000400	ENGINEER'S FIELD OFFICE, TYPE A	CAL MD	1	0.5	0.5				
67100100	MOBILIZATION	L SUM	1	0.5	0.5				
70102630	TRAFFIC CONTROL AND PROTECTION, STANDARD 701601	L SUM	1		1				
70102632	TRAFFIC CONTROL AND PROTECTION, STANDARD 701602	L SUM	1	1					
70102640	TRAFFIC CONTROL AND PROTECTION, STANDARD 701601	L SUM	1	0.5	0.5				
70300520	PAVEMENT MARKING TAPE, TYPE III 4"	FOOT	80		80				
70400100	TEMPORARY CONCRETE BARRIER	FOOT	760	120	640				
70400200	RELOCATE TEMPORARY CONCRETE BARRIER	FOOT	760	120	640				
* 78000100	THERMOPLASTIC PAVEMENT MARKING - LETTERS AND SYMBOLS	SQ FT	100	100					
* 78000200	THERMOPLASTIC PAVEMENT MARKING - LINE 4"	FOOT	1640	200	1440				
X0320047	REMOVAL OF EXISTING PRECAST PRESTRESSED CONCRETE DECK BEAMS	SQ FT	2796	575	2221				
X0322467	TEMPORARY INFORMATION SIGNING FOR LANE CLOSURE	SQ FT	96	48	48				
X4066424	BITUMINOUS CONCRETE SURFACE COURSE, SUPERPAVE, MIX "D", N50	TON	41.8	7.5	34.3				
Z0001900	ASBESTOS BEARING PAD REMOVAL	EACH	30	2	28				

SUMMARY OF QUANTITIES			TOTAL QUANTITIES	URBAN X080-2A		CONSTRUCTION TYPE CODE SFTY-2A			
CODE NO	ITEM	UNIT		LOC. 1 COOK 016-0525	LOC. 2 DUPAGE 022-0084				
Δ Z0030240	IMPACT ATTENUATORS, TEMPORARY (NON-REDIRECTIVE), TEST LEVEL 2	EACH	4	2	2				
Δ Z0030340	IMPACT ATTENUATORS, RELOCATE (NON-REDIRECTIVE), TEST LEVEL 2	EACH	2	1	1				

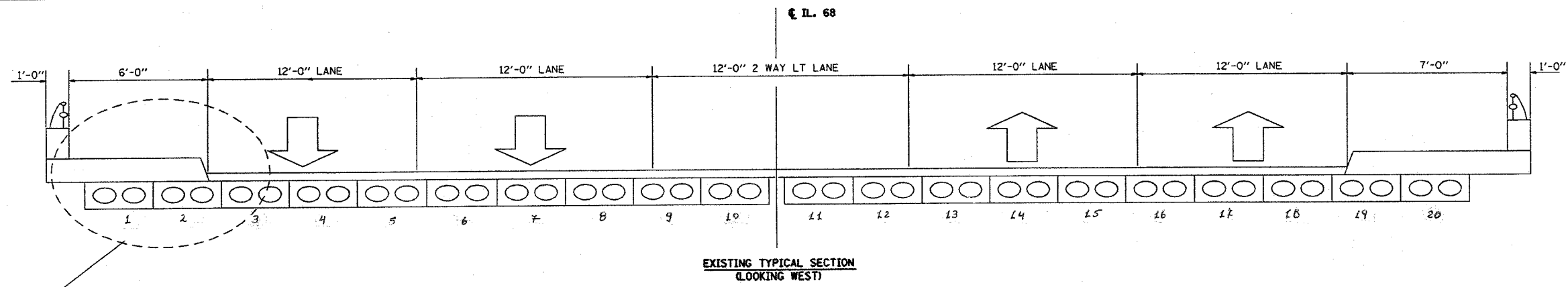
Δ SFTY-3N
* SPECIALTY ITEMS

REVISIONS	
NAME	DATE

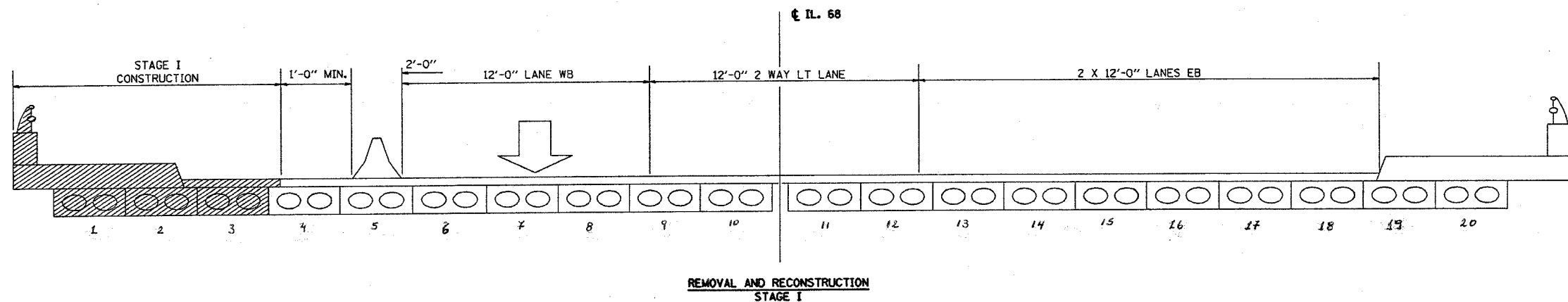
ILLINOIS DEPARTMENT OF TRANSPORTATION
SUMMARY OF QUANTITIES

4/15/2005 11:08:38 AM

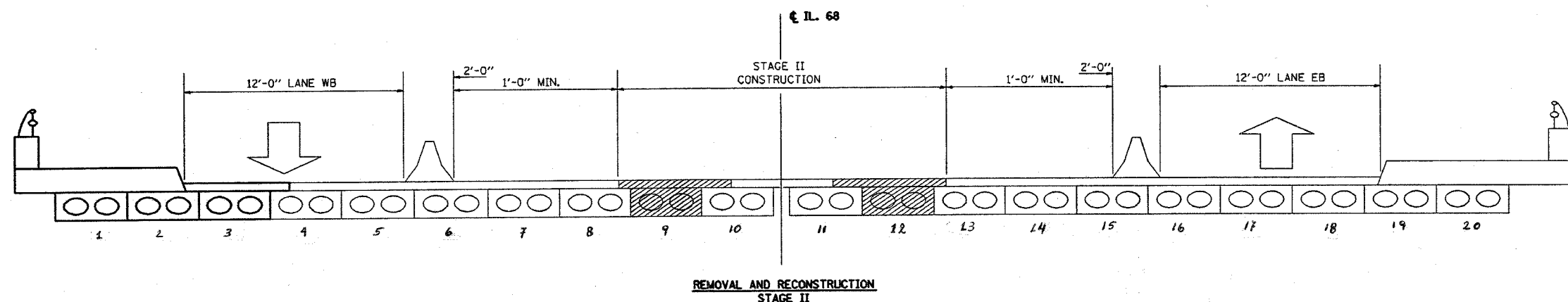
F.A.P. RTE.	SECTION	COUNTY	TOTAL SHEETS	SHEET NO.
343	2005-0058R	COOK/DUPAGE	14	4
STA. _____		TO STA. _____		
FED. ROAD DIST. NO. - ILLINOIS FED. AID PROJECT				



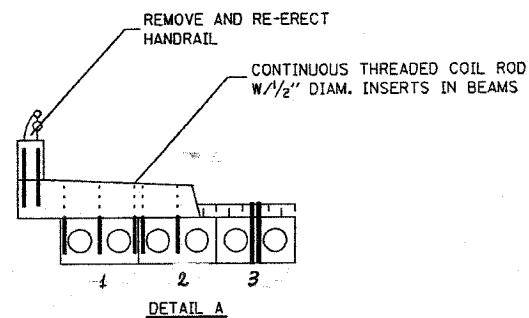
SEE DETAIL A



REMOVAL AND RECONSTRUCTION STAGE I



REMOVAL AND RECONSTRUCTION STAGE II



DETAIL A

PLOT DATE = 3/23/2006
 FILE NAME = s:\projects\111700\d111700aa.mxd
 PLOT SCALE = 1/8" = 1'-0"
 REFERENCE = SHEET

REVISIONS	
NAME	DATE

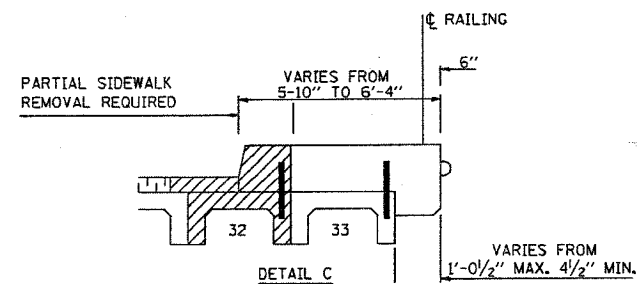
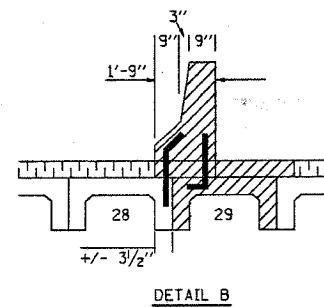
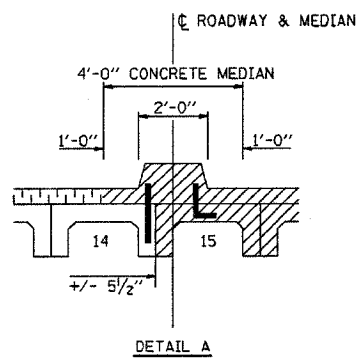
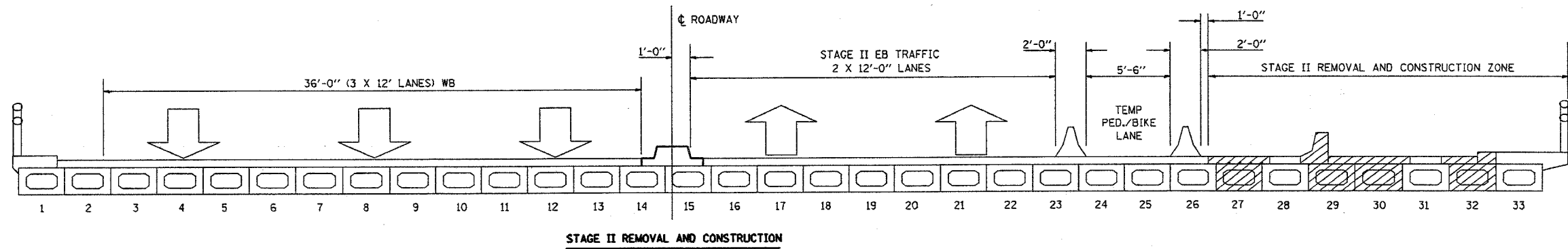
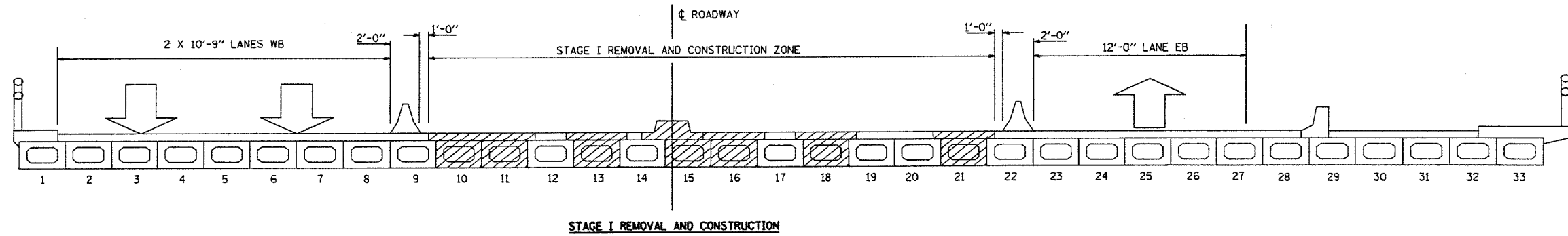
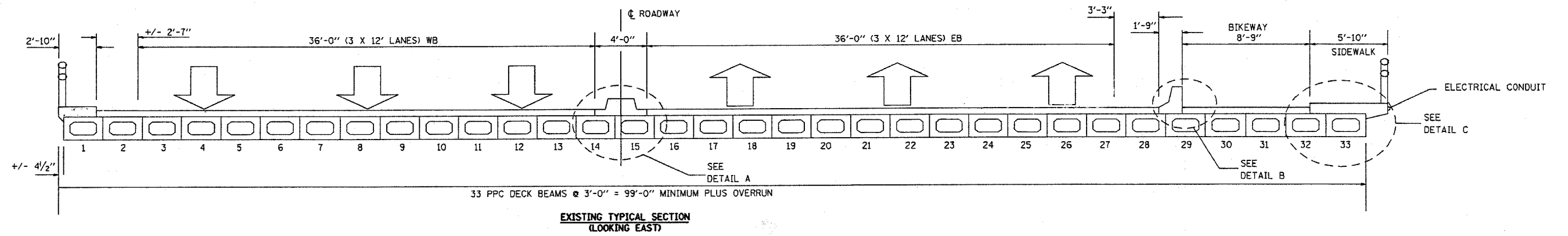
ILLINOIS DEPARTMENT OF TRANSPORTATION

STAGING LAYOUT
LOCATION 1
SN: 016-0525

SCALE: VERT. _____
HORIZ. _____
DATE _____

DRAWN BY _____
CHECKED BY _____

F.A.P. #	SECTION	COUNTY	TOTAL SHEETS	SHEET NO.
343	2005-0058R	COOK/DUPAGE	14	5
STA. _____		TO STA. _____		
FED. ROAD DIST. NO. _____		ILLINOIS FED. AID PROJECT		



REVISIONS	
NAME	DATE

ILLINOIS DEPARTMENT OF TRANSPORTATION

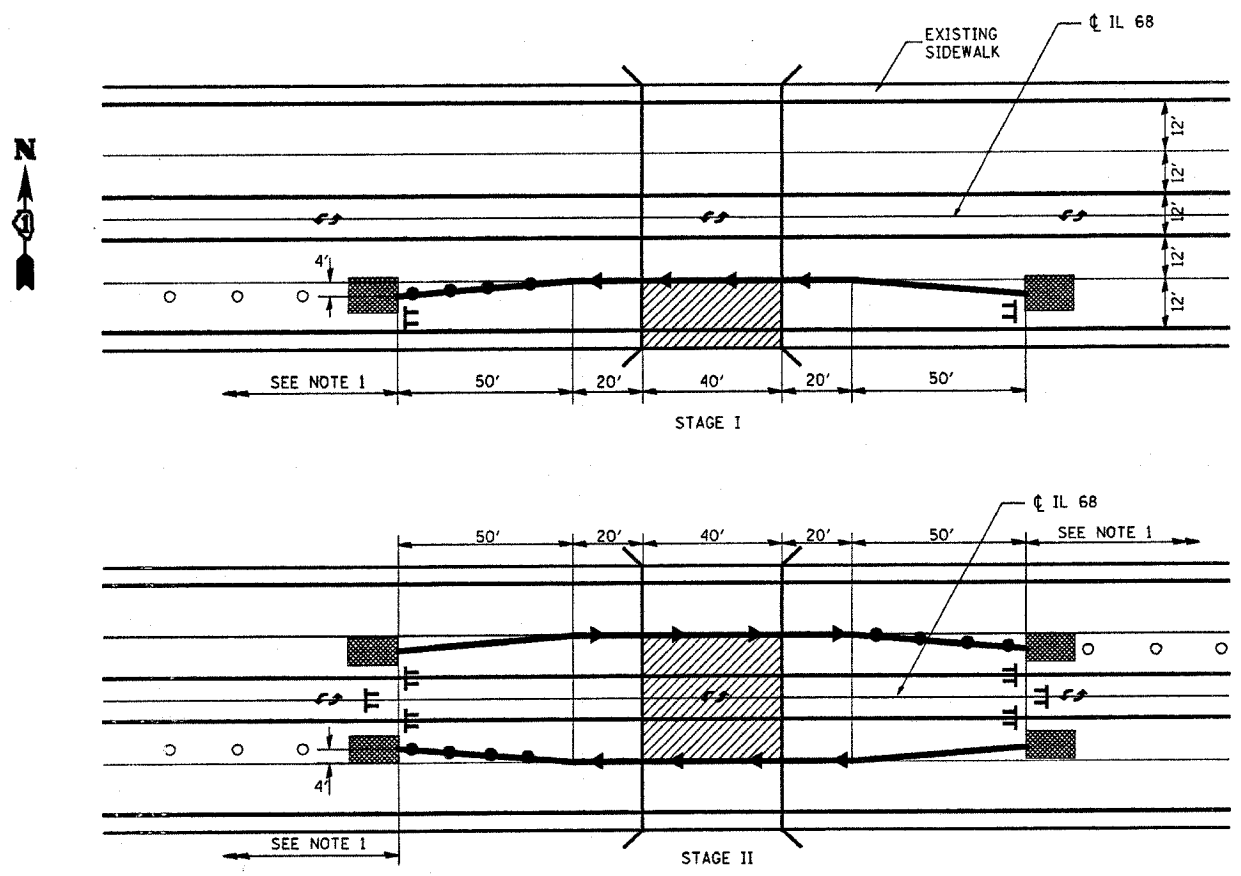
STAGING LAYOUT
LOCATION 2
SN: 022-0084

SCALE: VERT.
DATE

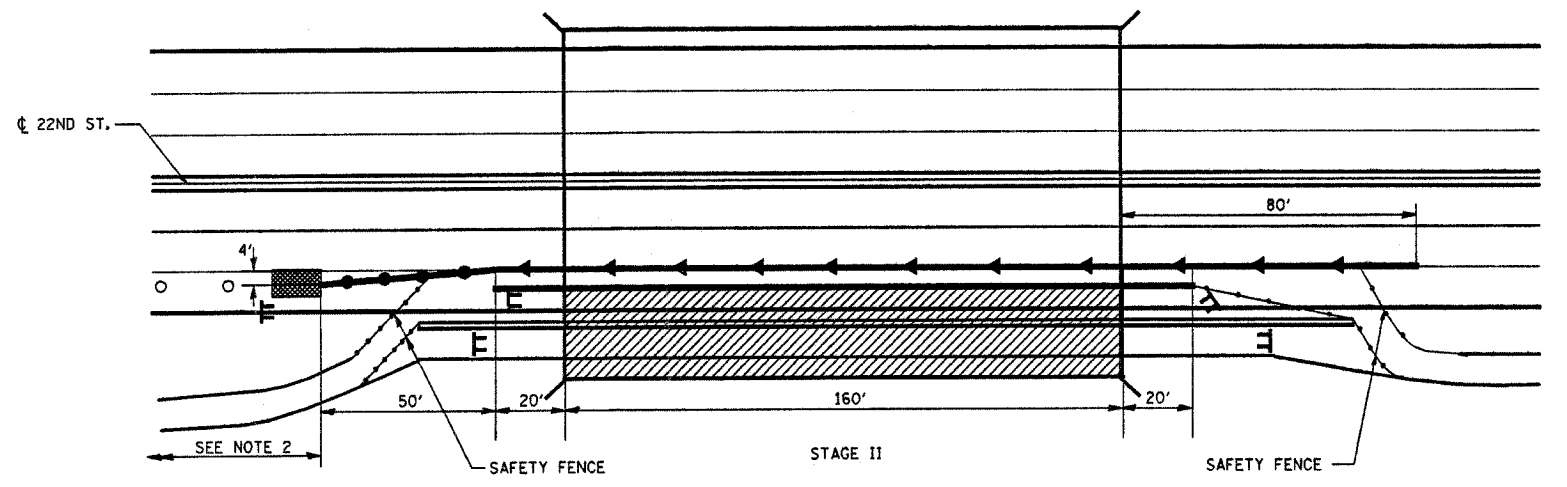
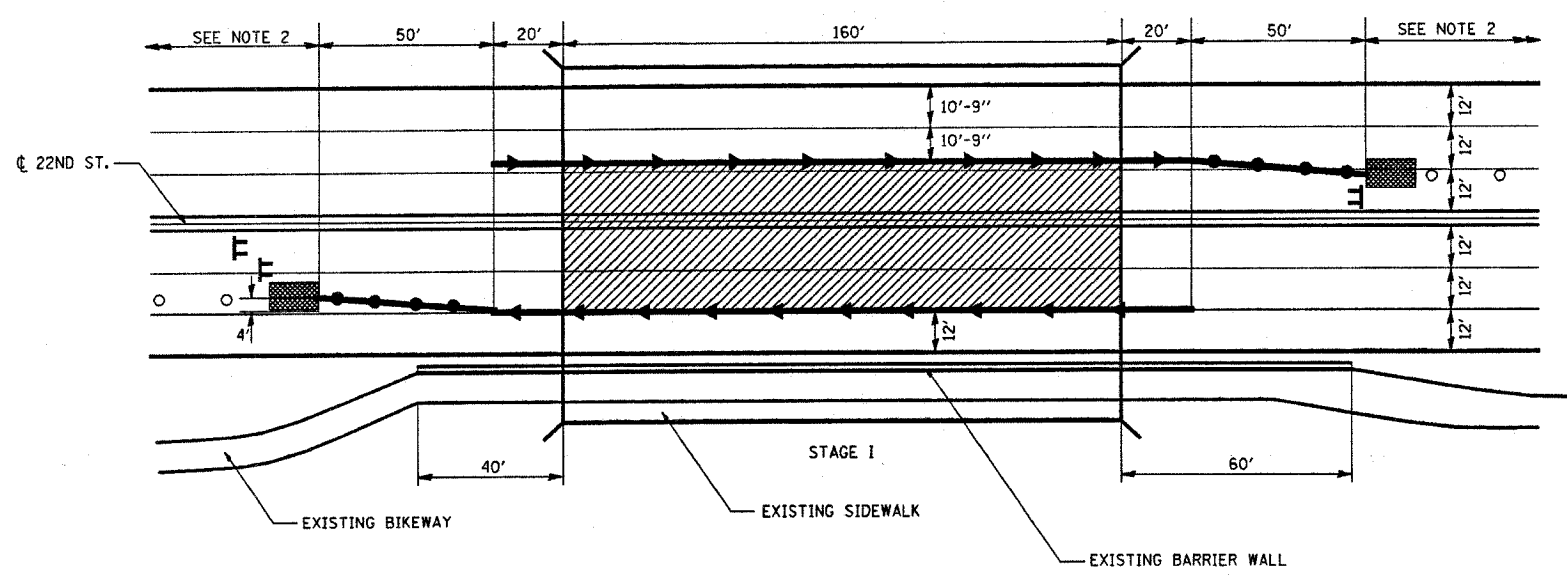
DRAWN BY
CHECKED BY

PLOT DATE = 3/31/2005
FILE NAME = c:\projects\111700a\111700a.m32
REFERENCE = SHEET 5 OF 14

F.A.P./A.I.L. RTE. NO.	SECTION	COUNTY	TOTAL SHEETS	SHEET NO.
343 1453	2006-0058R	COOK/DUPAGE	14	6
STA. _____		TO STA. _____		
FED. ROAD DIST. NO. _____		ILLINOIS FED. AID PROJECT		



LOCATION 1
SN 016-0525



LOCATION 2
SN 022-0084

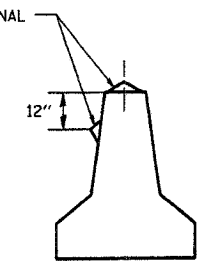
- TYPE III BARRICADE WITH STEADY BURNING LIGHTS
- WORK ZONE
- IMPACT ATTENUATORS
- TEMP. CONCRETE BARRIER WITH TYPE C MONODIRECTIONAL REFLECTOR ON TANGENT PORTION AT BARRIER AT 50' CENTERS (SEE DETAIL A)
- TEMP. CONCRETE BARRIER WITH VERTICAL PANELS AT 25' CENTERS WITH STEADY BURN MONODIRECTIONAL LIGHT

NOTE 1: LANE CLOSURE ACCORDING TO STANDARD 701602

NOTE 2: LANE CLOSURE ACCORDING TO STANDARD 701601
COVER CONFLICTING EXISTING PAVEMENT MARKINGS WITH BLACK TYPE III TAPE

ADDITIONAL TRAFFIC CONTROL ITEMS SHOWN ON THIS SHEET ARE INCLUDED IN THE COST OF THE APPLICABLE HIGHWAY STANDARDS

TYPE C
MONODIRECTIONAL
REFLECTOR



DETAIL A
(BARRIER WALL REFLECTORS)

REVISIONS	
NAME	DATE

ILLINOIS DEPARTMENT OF TRANSPORTATION

STAGING LAYOUT FOR
TEMPORARY CONCRETE BARRIER
LOCATIONS 1 AND 2

SCALE: VERT. _____
HORIZ. _____

DATE _____

DRAWN BY _____
CHECKED BY _____

PLOT DATE = 3/31/2006
 FILE NAME = c:\p\projects\d111700a\111700aa.mxd
 PLOT SCALE = 1/8" = 1'-0"
 USER NAME = stanleyer

STATE OF ILLINOIS
DEPARTMENT OF TRANSPORTATION

ROUTE NO.	SECTION	COUNTY	TOTAL SHEETS	SHEET	SHEET NO. 1
		COOK	14	7	4 SHEETS
FED. ROAD DIST. NO. 7		ILLINOIS	FED. AID PROJECT-		

Contract Number: 62912

GENERAL NOTES

Plan dimensions and details relative to existing structure have been taken from existing plans and are subject to nominal construction variations. It shall be the Contractor's responsibility to verify such dimensions and details in the field and make necessary approved adjustments prior to construction or ordering of materials. Such variations shall not be cause for additional compensation for a change in the scope of the work, however, the Contractor will be paid for the quantity actually furnished at the unit price bid for the work.

Any damage done to the bridge during beam removal shall be repaired by the Contractor. Cost to be included in the cost of "Removal of Existing P.P.C. Deck Beams".

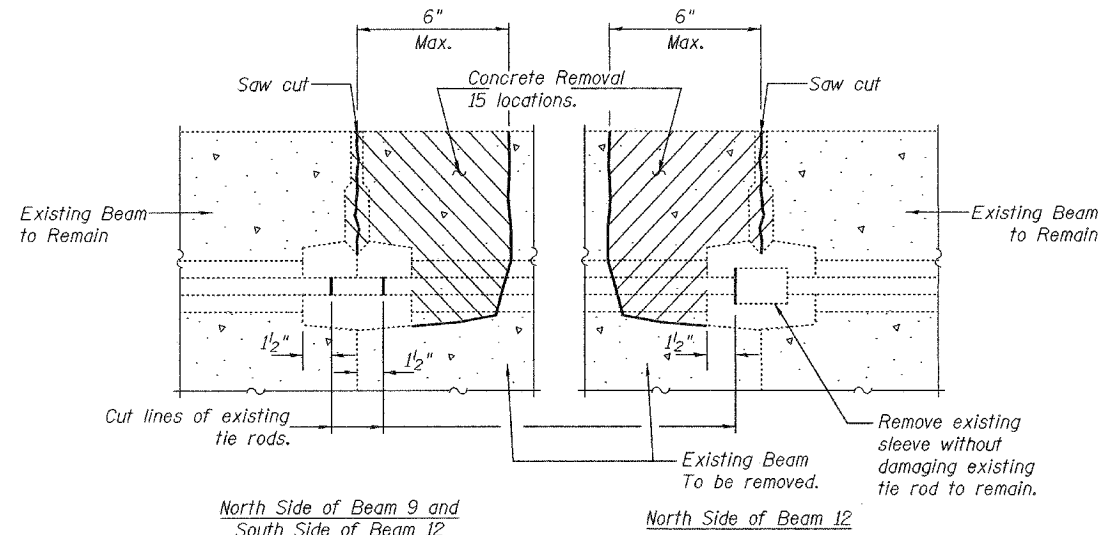
Reinforcement bars shall conform to the requirements of AASHTO M 31 or M 322 Grade 60.

The top surface of the beams shall be finished in accordance with Article 504.06 of the Standard Specifications except that the surface shall not be roughened by brooming. The finished surface shall be free of depressions or high spots with sharp corners, and the top edge of keys shall be rounded or chamfered a minimum of 1/4".

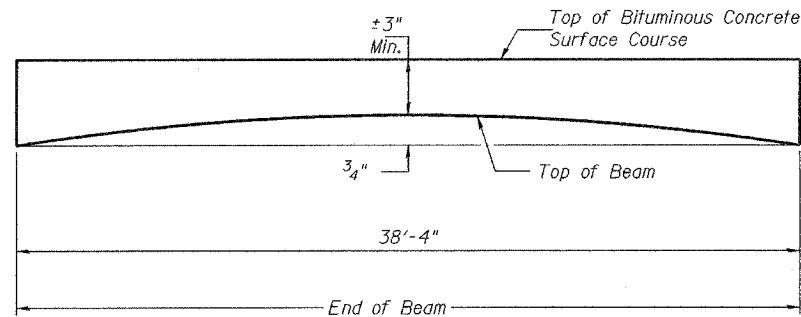
Temporary concrete barrier shall only be anchored into the overlay and not the PPC Deck Beams.

Existing reinforcement extending into the removal area shall be cleaned, straightened and incorporated into the new construction.

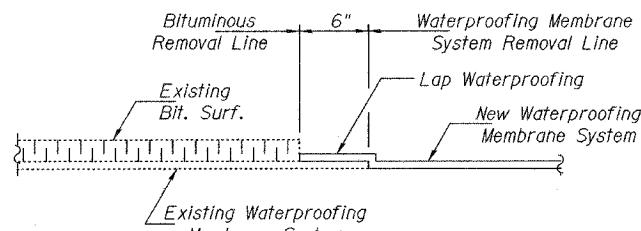
Any reinforcement bars that are damaged during concrete removal shall be replaced with an approved bar splicer or anchorage system. Cost shall be included with Concrete Removal.



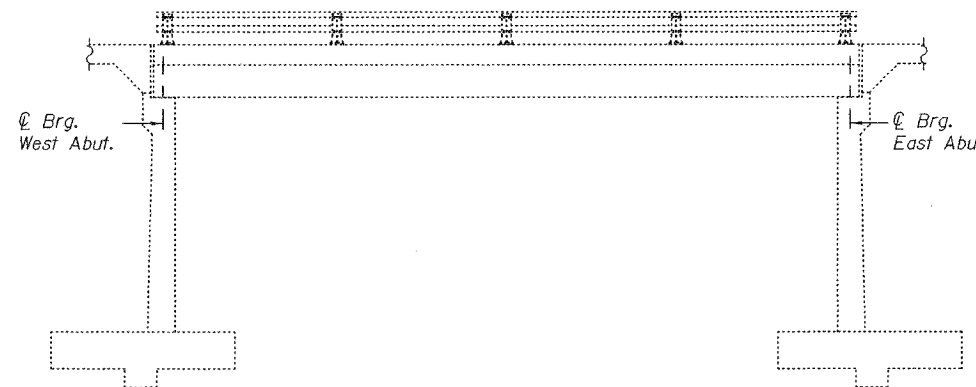
**BEAM REMOVAL DETAIL
AT TRANSVERSE TIES**



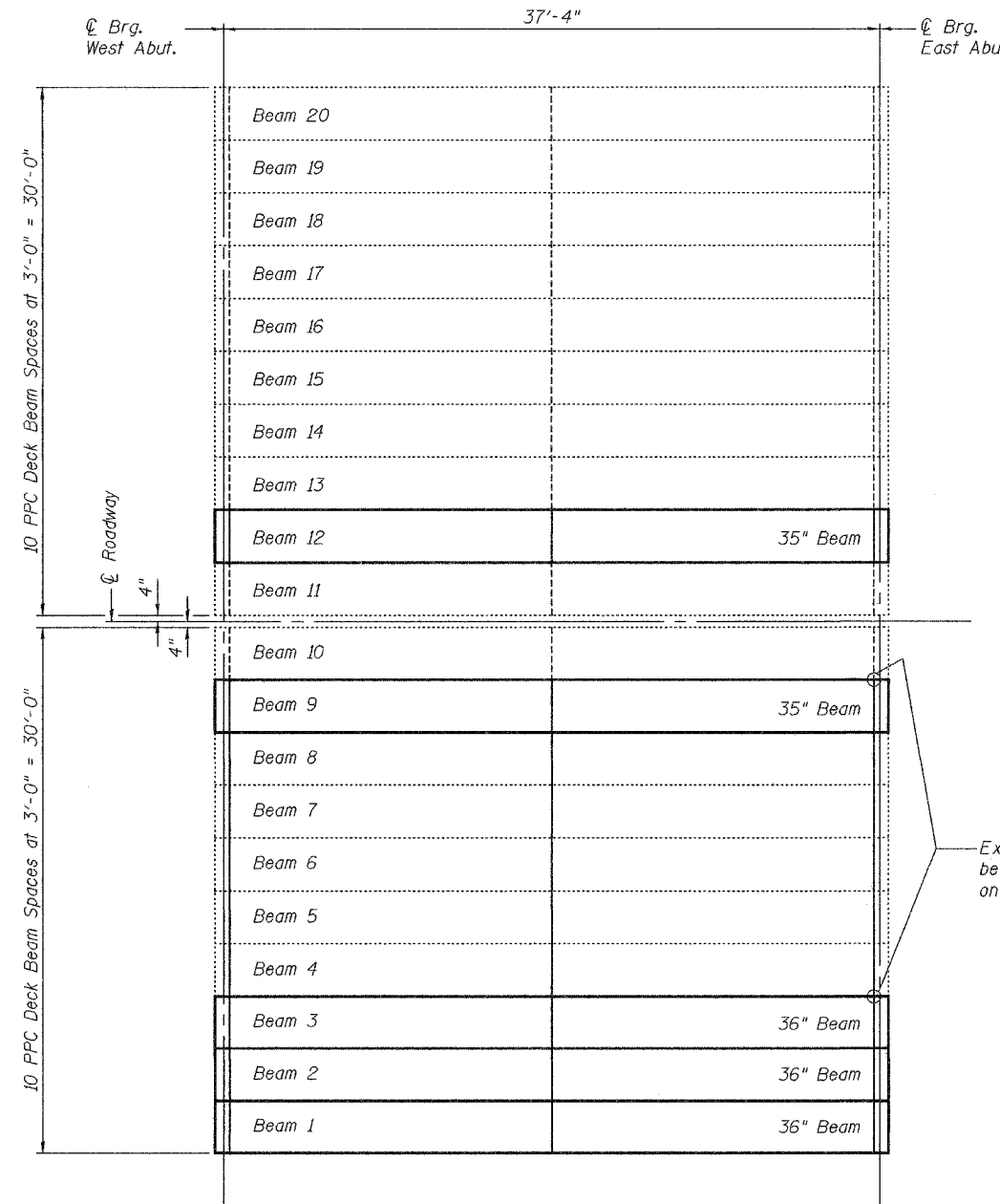
ANTICIPATED INITIAL CAMBER DIAGRAM



WATERPROOFING TREATMENT



ELEVATION



PLAN

TOTAL BILL OF MATERIAL

ITEM	UNIT	QUANTITY
Bituminous Concrete Surface Removal	Sq. Yd.	10.6
Waterproofing Membrane System	Sq. Yd.	51.8
Removal of Existing PPC Deck Beams	Sq. Ft.	575
Bituminous Concrete Surface Course, Superpave, Mix "D", N 50	Tons	7.5
PC Mortar Fairing Course	Foot	268
PPC Deck Beams (21" Depth)	Sq. Ft.	569
Concrete Superstructure	Cu. Yd.	13.5
Protective Coat	Sq. Yd.	44.7
Concrete Removal	Cu. Yd.	5.9
Reinforcement Bars, Epoxy Coated	Pound	1410
Asbestos Bearing Pad Removal	Each	2
Removing and Re-Erecting Existing Railing	Foot	78

**DESIGN STRESSES
PRESTRESS UNITS**

$f'_c = 5000 \text{ psi}$
 $f'_{ci} = 4000 \text{ psi}$
 $f'_s = 270000 \text{ psi}$ (1/2" low lax strands)
 $f'_{si} = 201960 \text{ psi}$ (1/2" low lax strands)

**PLAN AND ELEVATION
F.A.P. RT. 343
COOK COUNTY
SN 016-0525**

DESIGNED	Vicente H. Veliz
CHECKED	John A. Morris
DRAWN	Ralph E. Anderson
CHECKED	VHV / S.J.B.

EXAMINED	May 3, 2005
PASSED	John A. Morris
	Ralph E. Anderson



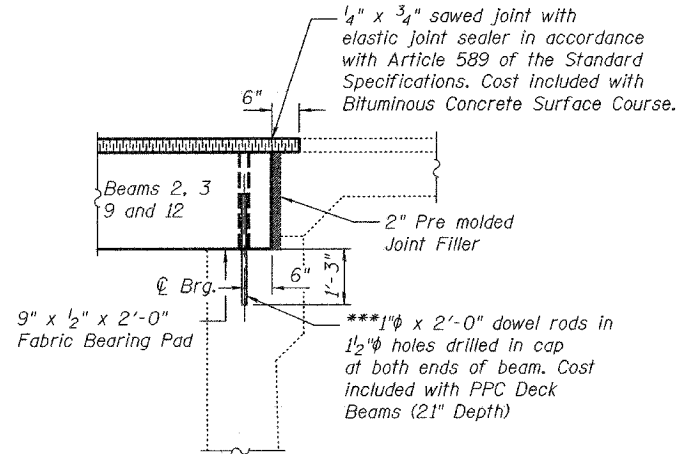
Expires: November 30, 2006



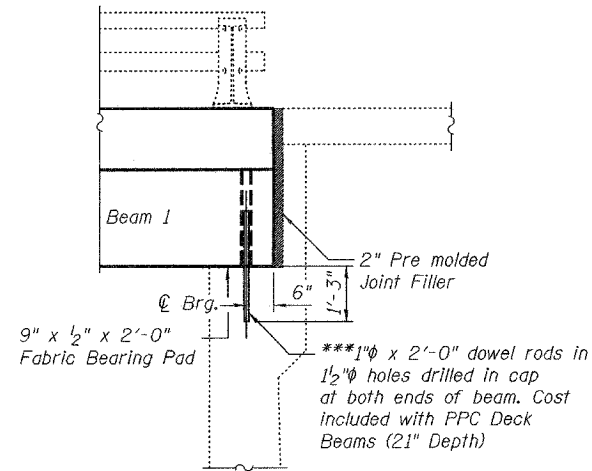
STATE OF ILLINOIS
DEPARTMENT OF TRANSPORTATION

ROUTE NO.	SECTION	COUNTY	SHEET	DATE
		Cook	14	9
FED. ROAD DIST. NO. 7 ILLINOIS FED. AID PROJECT				
Contract Number: 62912				

SHEET NO. 3
4 SHEETS



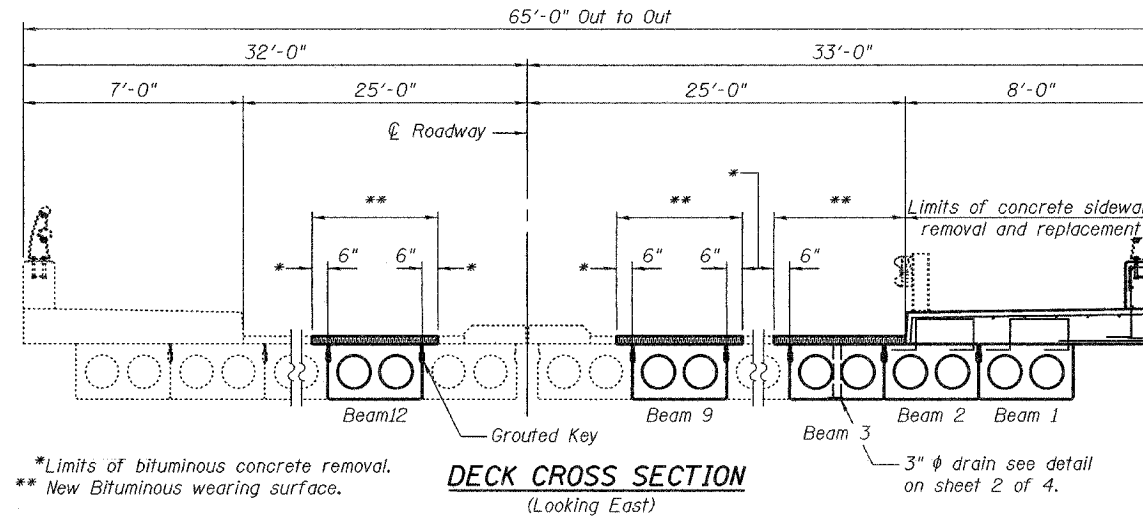
TYPICAL ABUTMENT SECTION



ABUTMENT SECTION AT SOUTH SIDEWALK

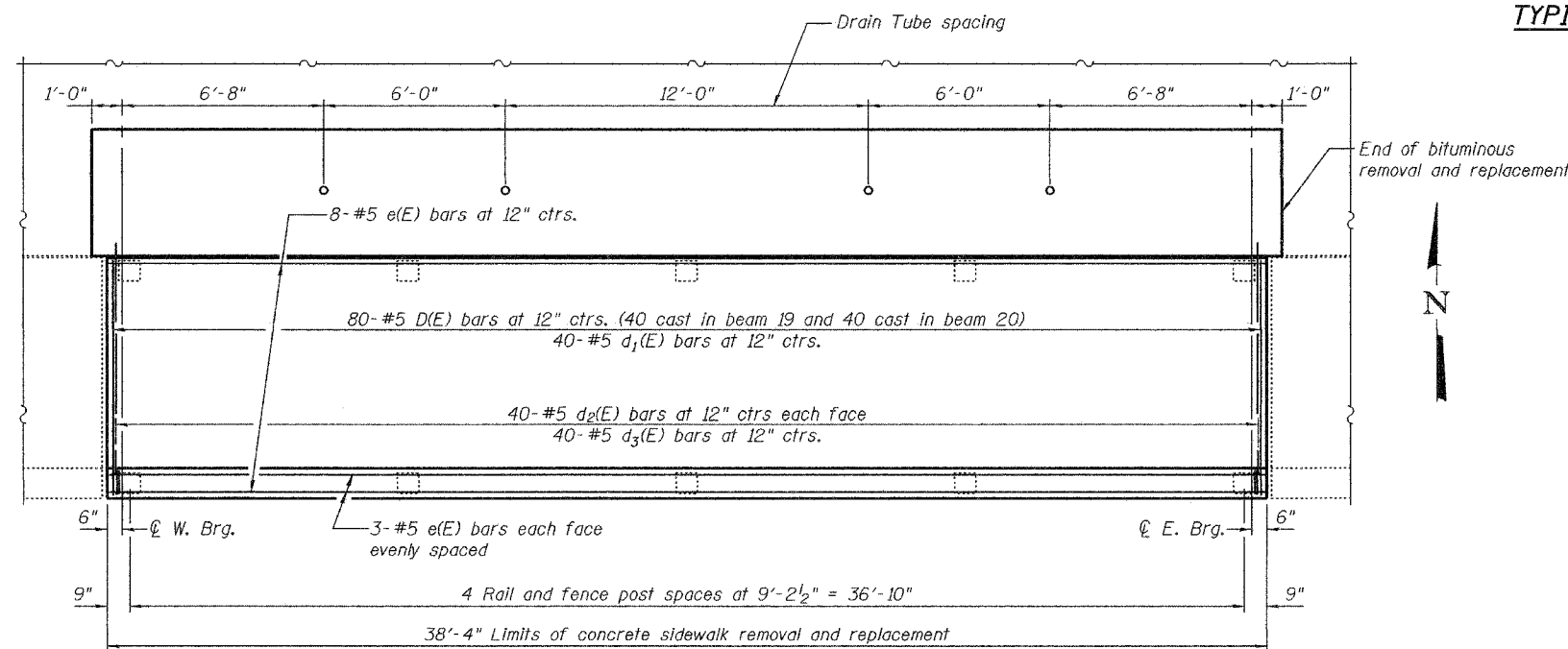
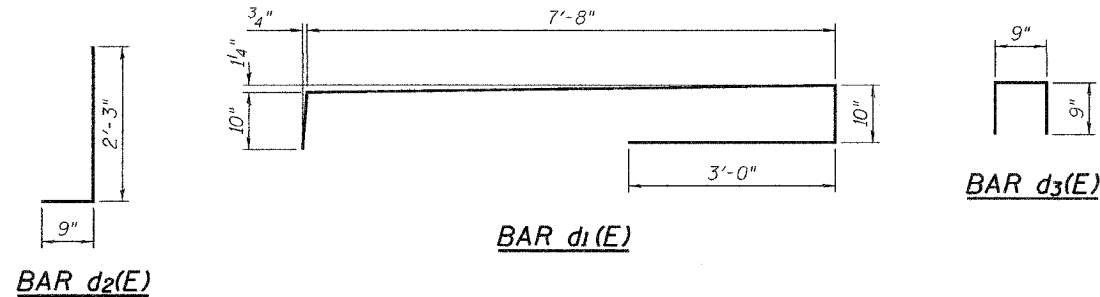
Notes:
Cut existing dowel rods at Beam 1 flush with the abutment cap.

***Dowel rods to be grouted after beams are in place and allowed to cure for a minimum of 24 hours prior to grouting shear keys.

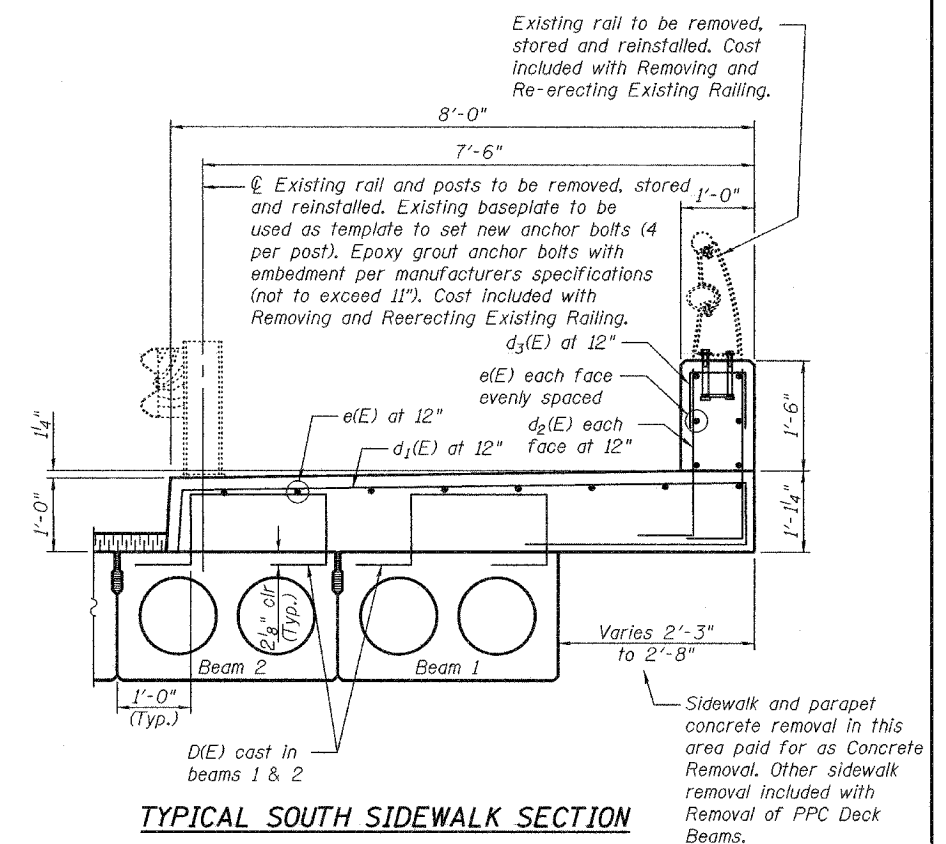


DECK CROSS SECTION
(Looking East)

*Limits of bituminous concrete removal.
** New Bituminous wearing surface.



PARTIAL DECK AND SIDEWALK PLAN



TYPICAL SOUTH SIDEWALK SECTION

BILL OF MATERIAL

Bar	No.	Size	Length	Shape
d ₁ (E)	40	#5	12'-4"	
d ₂ (E)	80	#5	3'-0"	
d ₃ (E)	40	#5	2'-3"	
e(E)	14	#5	38'-0"	
Concrete Removal			Cu. Yd.	5.9
Concrete Superstructure			Cu. Yd.	13.5
Reinforcement Bars, Epoxy Coated			Lbs.	1410

Reinforcement bars designated (E) shall be epoxy coated.

DESIGNED	V.H.V.
CHECKED	S.J.B.
DRAWN	Drew Christopher
CHECKED	V.H.V. S.J.B.

EXAMINED	John A. Morris ENGINEER OF STRUCTURAL SERVICES
PASSED	Ralph E. Anderson ENGINEER OF BRIDGES AND STRUCTURES

May 3, 2005

DECK DETAILS
F.A.P. RT. 343
COOK COUNTY
SN 016-0525

GENERAL NOTES

Plan dimensions and details relative to existing structure have been taken from existing plans and are subject to nominal construction variations. It shall be the Contractor's responsibility to verify such dimensions and details in the field and make necessary approved adjustments prior to construction or ordering of materials. Such variations shall not be cause for additional compensation for a change in the scope of the work, however, the Contractor will be paid for the quantity actually furnished at the unit price bid for the work.

Any damage done to the bridge during beam removal shall be repaired by the Contractor. Cost to be included in the cost of "Removal of Existing P.P.C. Deck Beams".

Reinforcement bars shall conform to the requirements of AASHTO M 31 or M 322 Grade 60.

The top surface of the beams shall be finished in accordance with Article 504.06 of the Standard Specifications except that the surface shall not be roughened by brooming. The finished surface shall be free of depressions or high spots with sharp corners, and the top edge of keys shall be rounded or chamfered a minimum of 1/4".

Temporary concrete barrier shall only be anchored into the overlay and not the PPC Deck Beams.

All structural steel shall be shop painted with the inorganic zinc rich primer per AASHTO M300, Type 1. Cost included with Furnishing and Erecting Structural Steel.

Existing reinforcement extending into the removal area shall be cleaned, straightened and incorporated into the new construction.

Any reinforcement bars that are damaged during concrete removal shall be replaced with an approved bar splicer or anchorage system. Cost shall be included with Concrete Removal.

For stage construction details see Roadway Plans.

TOTAL BILL OF MATERIAL

ITEM	UNIT	QUANTITY
Bituminous Concrete Surface Removal	Sq. Yd.	100
Waterproofing Membrane System	Sq. Yd.	305
Removal of Existing PPC Deck Beams	Sq. Ft.	2221
Bituminous Concrete Surface Course, Superpave Mix "D", N 50	Tons	34.3
PC Mortar Fairing Course	Foot	1219
PPC Deck Beams (27" Depth)	Sq. Ft.	2169
Concrete Removal	Cu. Yd.	16.8
Concrete Superstructure	Cu. Yd.	18.7
Protective Coat	Sq. Yd.	72.6
Furnishing and Erecting Structural Steel	Pound	1260
Asbestos Bearing Pad Removal	Each	28
Reinforcement Bars, Epoxy Coated	Pound	2150

**DESIGN STRESSES
PRESTRESS UNITS**

(New Construction)

$f'_c = 5000$ psi

$f'_{ci} = 4000$ psi

$f'_s = 270,000$ (1/2" low relaxation strands)

$f'_{si} = 201,960$ (1/2" low relaxation strands)



Expires: November 30, 2006

DESIGNED	Victor H. Veize
CHECKED	Alan T. Hallaway
DRAWN	[Signature]
CHECKED	VHV ATH

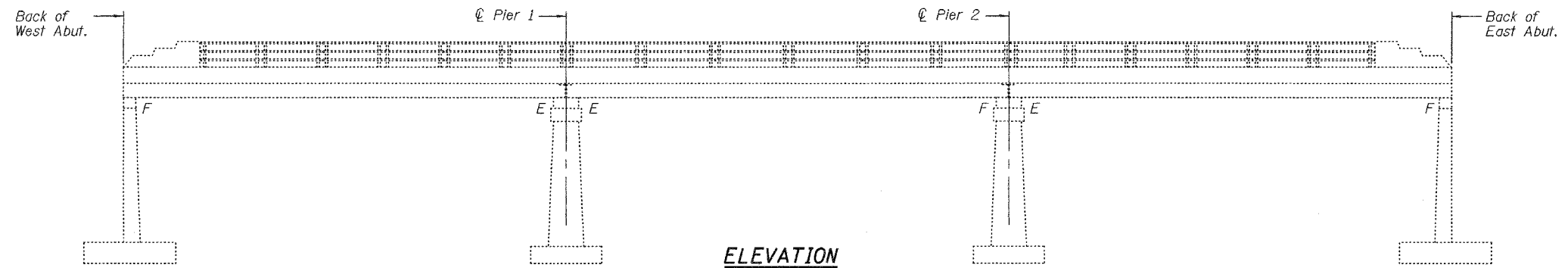
EXAMINED	John A. Morris
PASSED	Ralph E. Anderson

STATE OF ILLINOIS
DEPARTMENT OF TRANSPORTATION

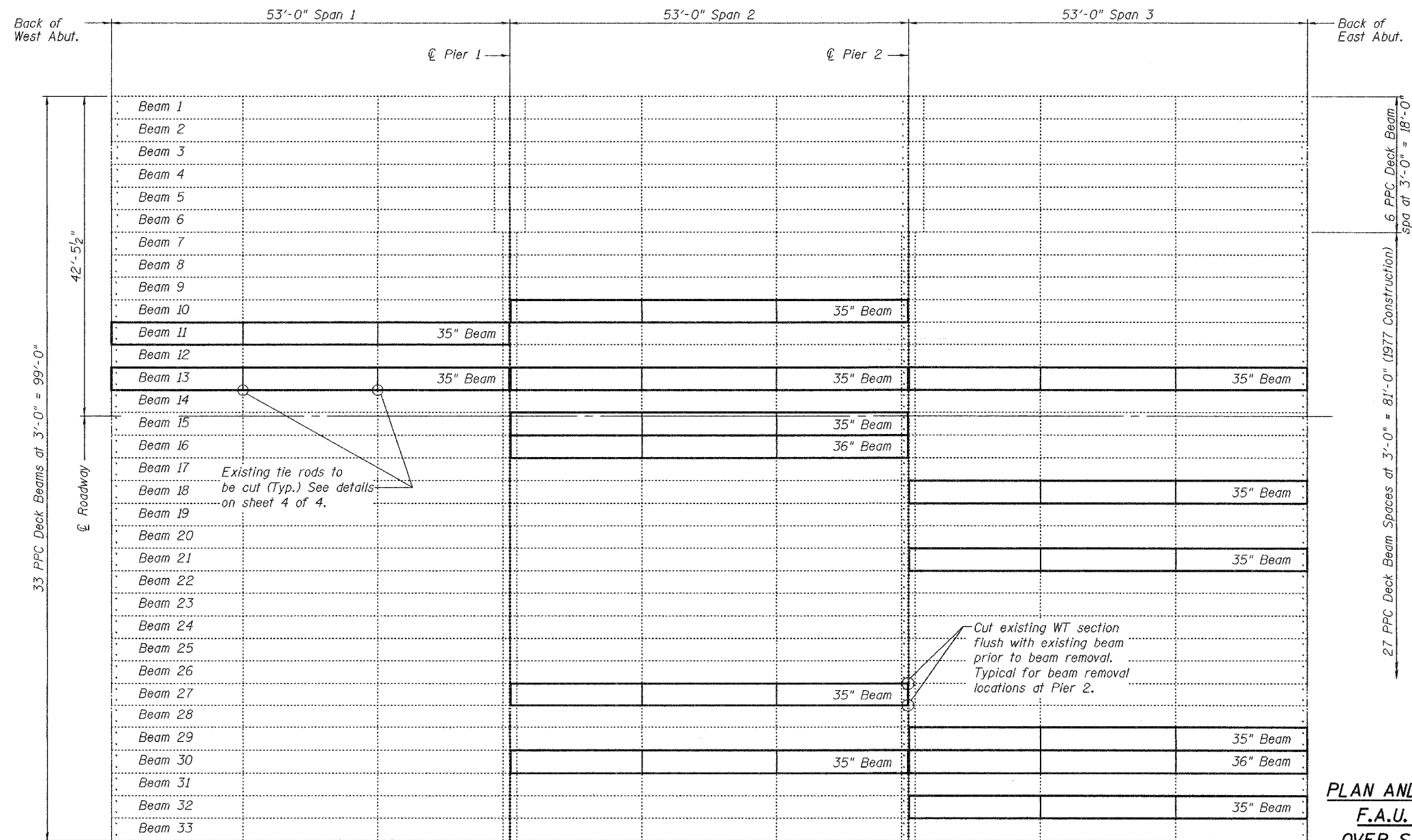
ROUTE NO.	SECTION	COUNTY	TOTAL SHEETS	SHEET NO.
		DuPage	11	1
FED. ROAD DIST. NO. 7	ILLINOIS	FED. AID PROJECT-		

SHEET NO. 1
4 SHEETS

Contract Number: 62912



ELEVATION



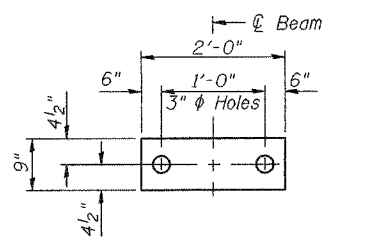
PLAN

**PLAN AND ELEVATION
F.A.U. RT. 9877
OVER SALT CREEK
DUPAGE COUNTY
SN 022-0084**

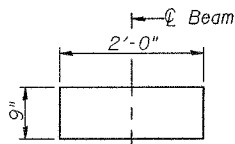


STATE OF ILLINOIS
DEPARTMENT OF TRANSPORTATION

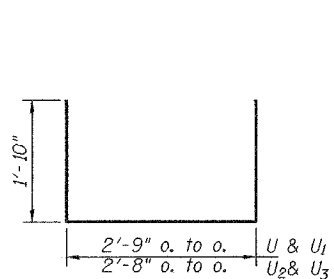
ROUTE NO.	SECTION	COUNTY	SHEET NO.	SHEET NO.
	DuPage	14	13	4 SHEETS
Contract Number: 62912				



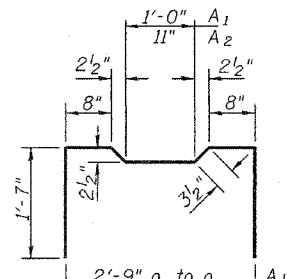
FABRIC BEARING PAD
(Interior)
FIXED



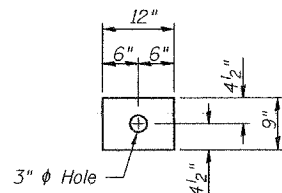
FABRIC BEARING PAD
(Interior)
EXPANSION



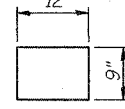
BARS U, U1, U2 & U3



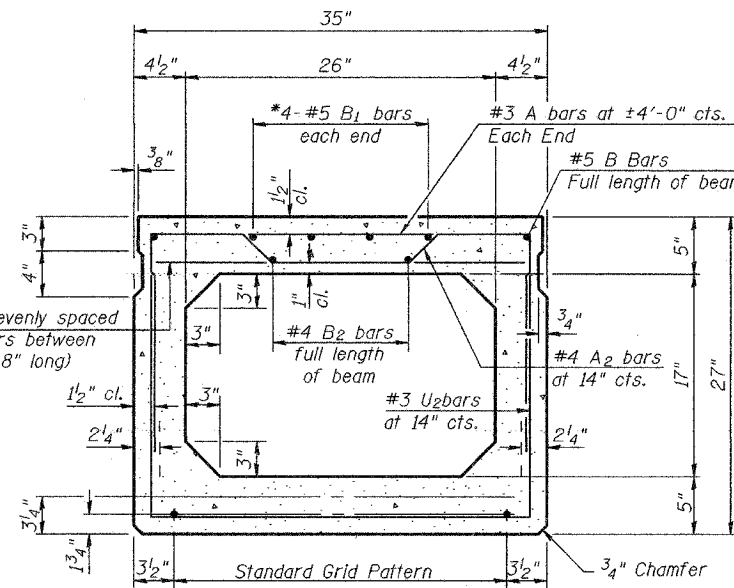
BAR A1 & A2



FABRIC ADJUSTING SHIM
(Fixed)

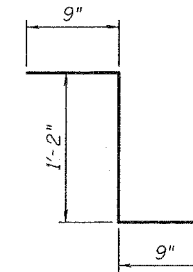


FABRIC ADJUSTING SHIM
(Expansion)



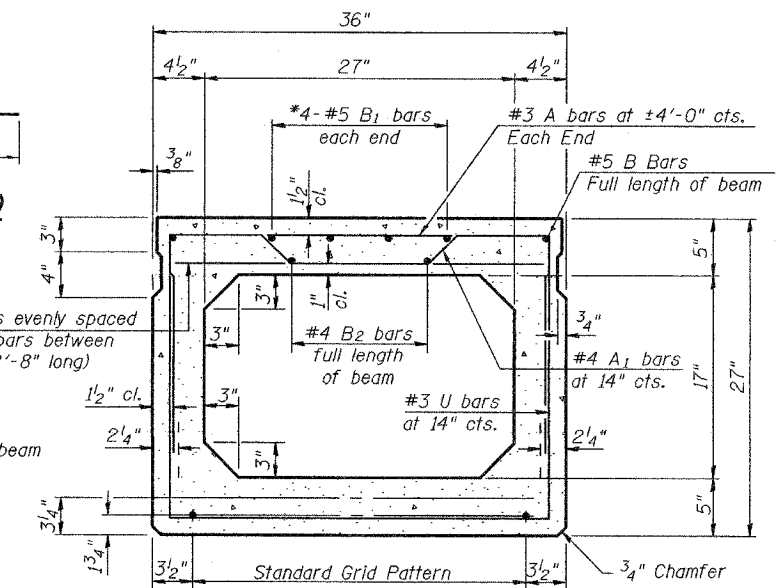
TYPICAL 35" SECTION

1/2" φ Strands, Each Strand Stressed to 30,900 Lbs.
8-Strands 1 3/4" up, 4-Strands 3/4" up
(12 Required)



BAR D1(E)

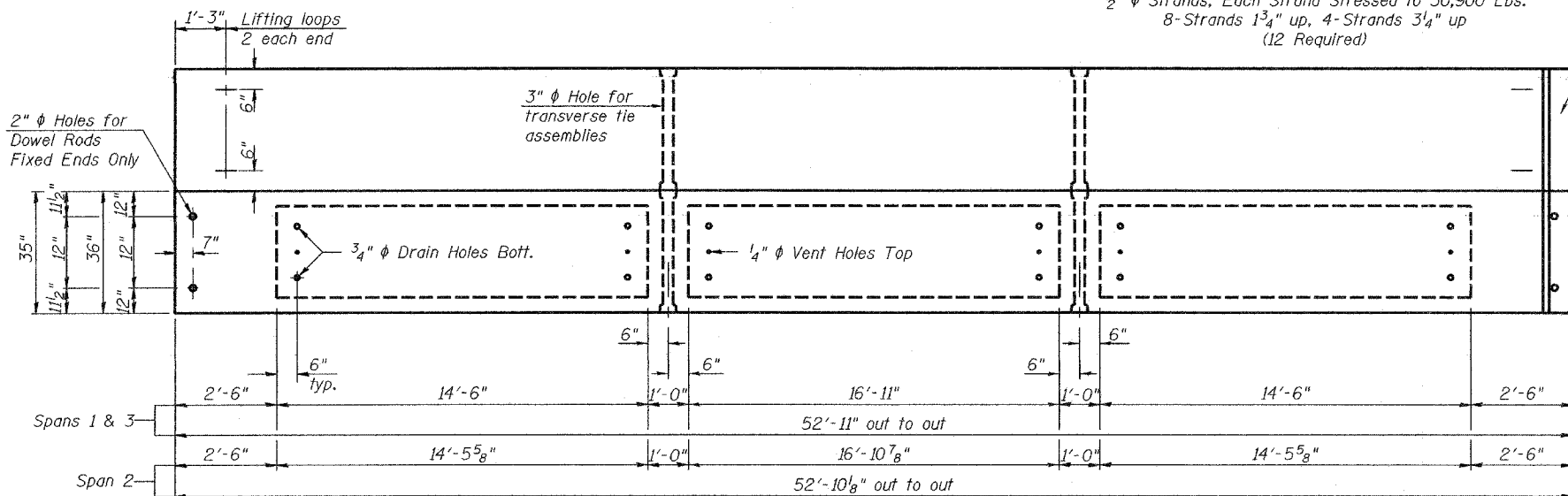
2-#3 A bars evenly spaced between A1 bars between end blocks (2'-8" long)
*0.2 x Length of beam



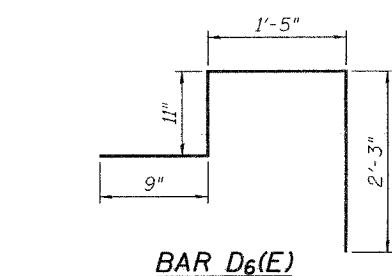
TYPICAL 36" SECTION

1/2" φ Strands, Each Strand Stressed to 30,900 Lbs.
8-Strands 1 3/4" up, 4-Strands 3/4" up
(2 Required)

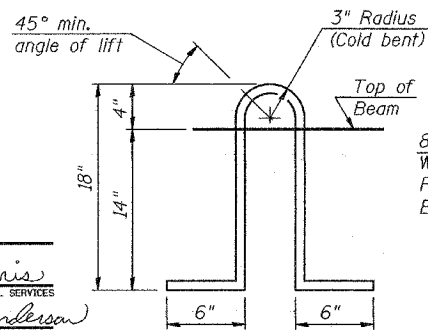
Note:
Place strands symmetrically about centerline of beam.



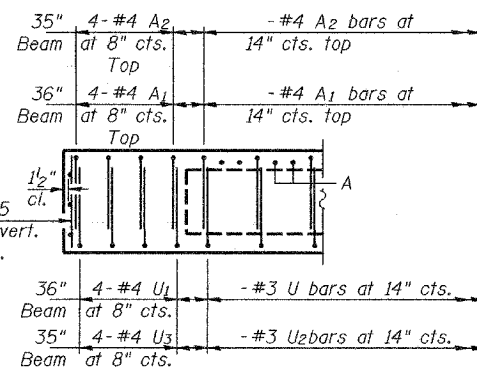
PLAN



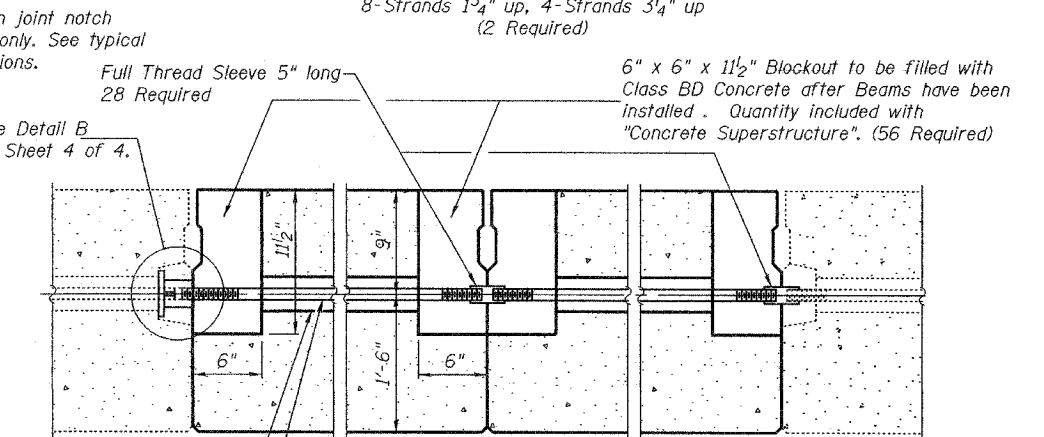
BAR D6(E)



LIFTING LOOP DETAIL



**END ELEVATION
FIXED END**



TYPICAL TRANSVERSE TIE ASSEMBLY

BILL OF MATERIAL

Bar	No.	Size	Length	Shape
a(E)	42	#5	2'-11"	
a1(E)	9	#5	5'-11"	
Precast Prestressed Conc. Deck Bms.		Sq. Ft.	2169	
Reinforcing Bars, Epoxy Coated		Pound	180	

NOTES

Prestressing steel shall be uncoated high strength, low relaxation 7-wire strand, Grade 270. The nominal diameter shall be 1/2" and the nominal cross-sectional area shall be 0.153 sq. in. Lifting loops shall be 2-1/2" φ-270 ksi strands, as shown. The 1" φ rods in the transverse tie assembly shall be tightened to a snug fit and the threads set. Pockets that receive transverse tie bar on outside shall be filled with grout after transverse tie assembly is in place. Non prestressing steel shall conform to AASHTO M-31 or M322 Grade 60. The bearing seat surfaces shall be adjusted by shimming to assure firm and even bearing. Two 1/8" fabric adjusting shims of the dimensions shown shall be provided for each bearing. Keyway surfaces shall be cleaned to remove form oil or other bond breaking material prior to shipment of the beams. Cleaning shall be done by sandblasting the keyway areas between top of the beam and the bottom edge of the key. Corrosion Inhibitor, as covered in the Special Provisions, shall be used in the concrete for precast prestressed concrete deck beams. Required Release Strength, f'ci, shall be 4000 p.s.i.

**BEAM DETAILS
F.A.U. RT. 9877
OVER SALT CREEK
DUPAGE COUNTY
SN 022-0084**

DESIGNED	V.H.V.
CHECKED	A.T.H.
DRAWN	Drew Christopher
CHECKED	V.H.V. A.T.H.

May 3, 2005
EXAMINED <i>John A. Morris</i> ENGINEER OF STRUCTURAL SERVICES
PASSED <i>Ralph E. Anderson</i> ENGINEER OF BRIDGES AND STRUCTURES

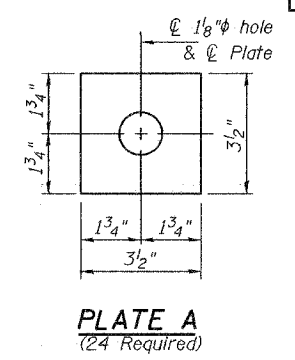
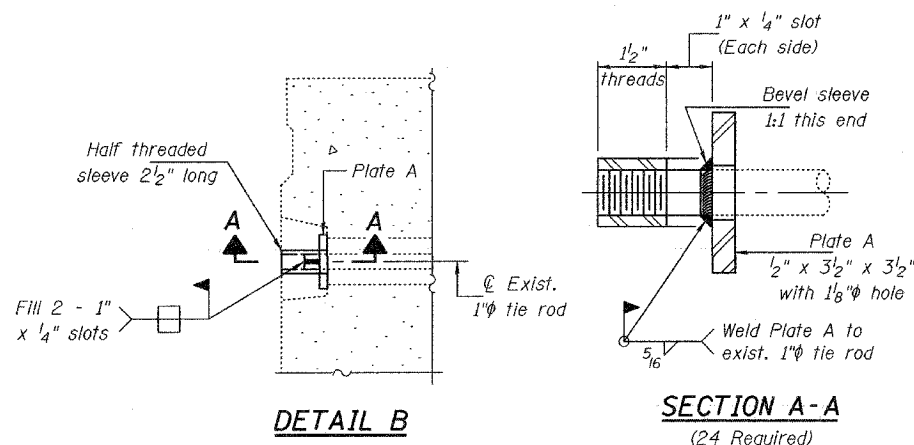
PD-5-S 10-22-04

STATE OF ILLINOIS
DEPARTMENT OF TRANSPORTATION

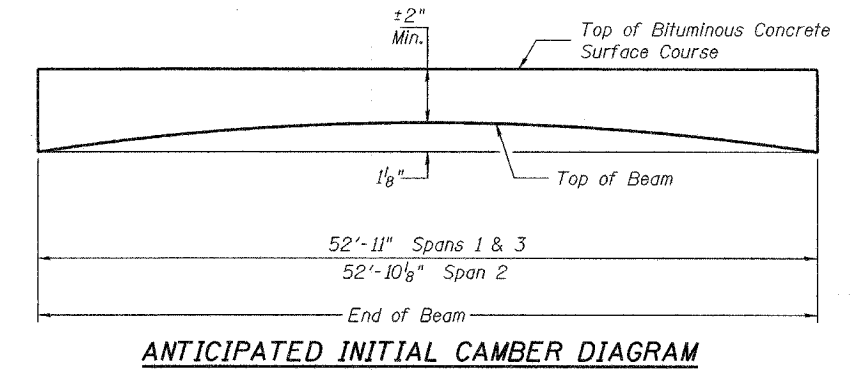
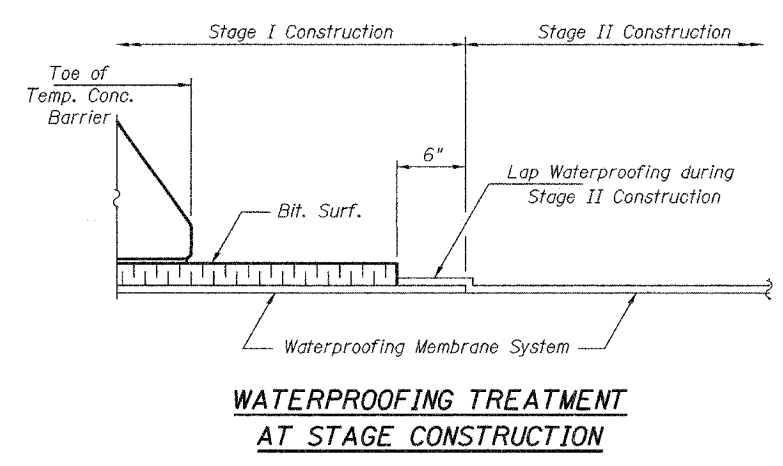
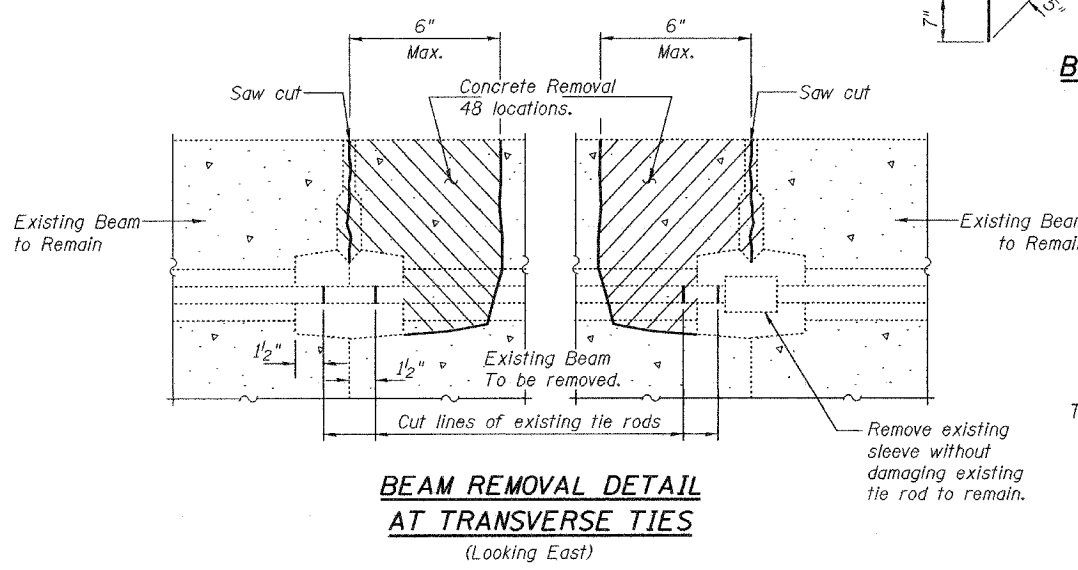
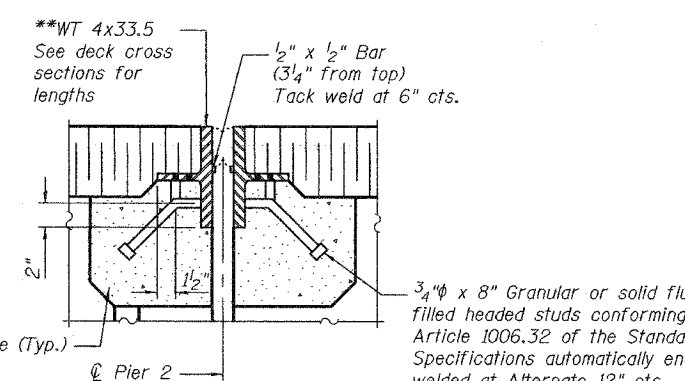
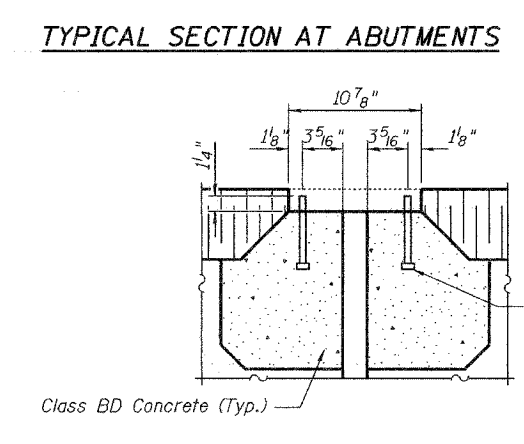
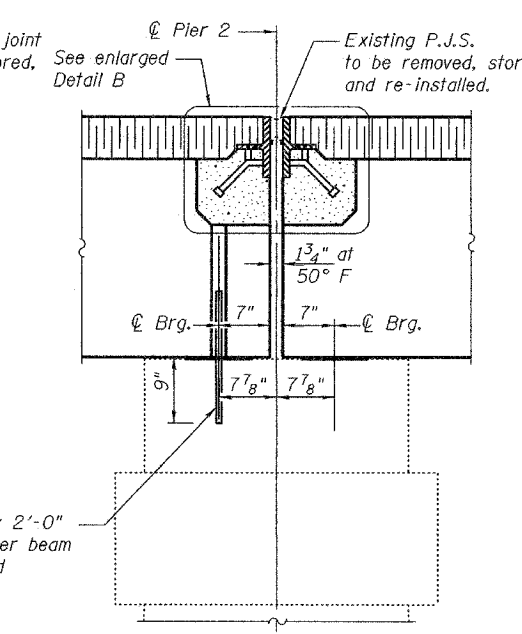
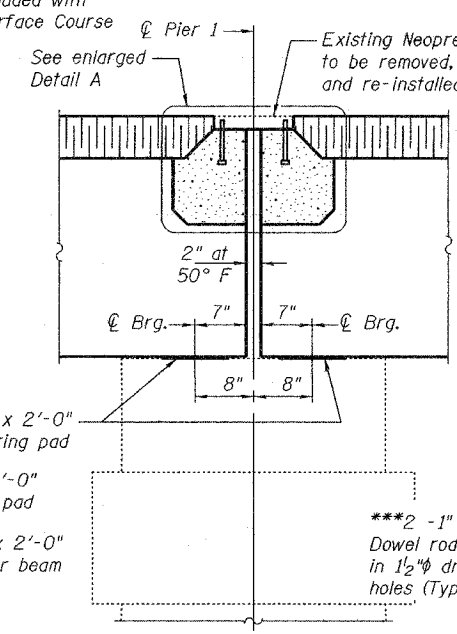
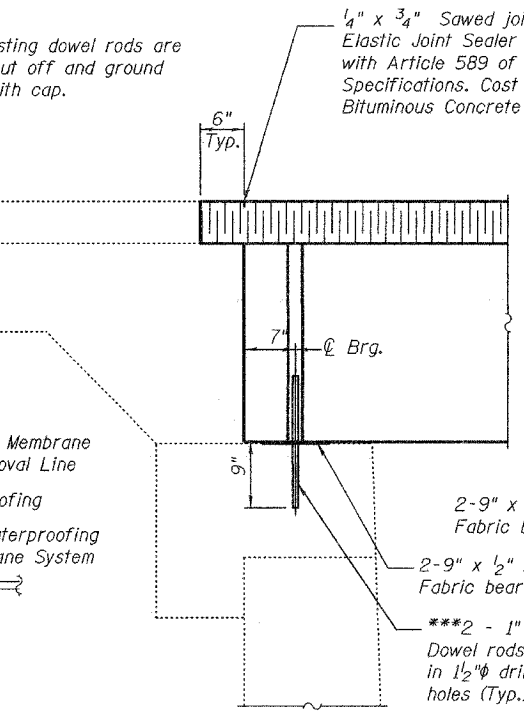
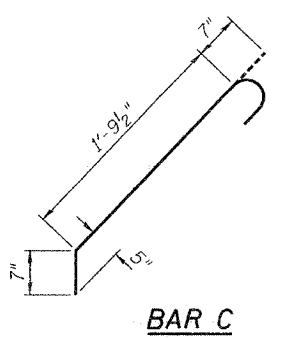
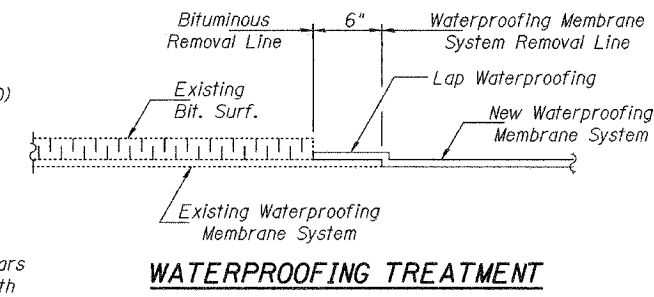
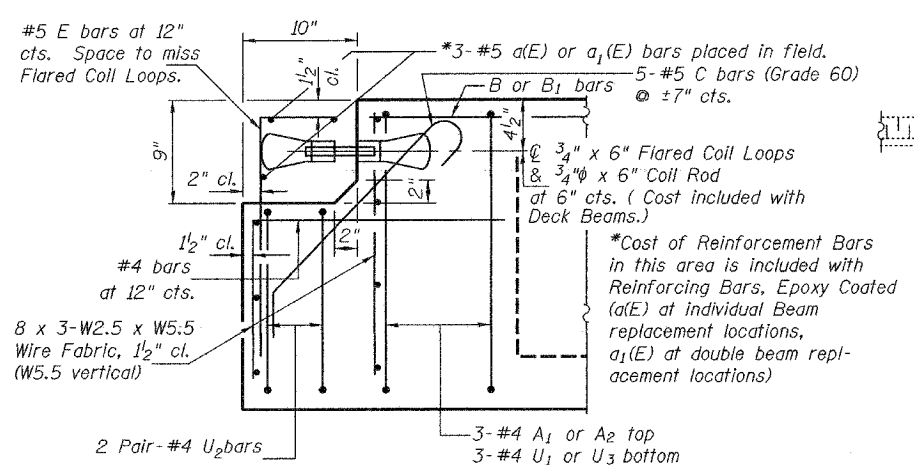
ROUTE NO.	SECTION	COUNTY	TOTAL SHEETS	SHEET NO.
		DuPage	14	14
FED. ROAD DIST. NO. 7		ILLINOIS		FED. AID PROJECT

Contract Number: 62912

SHEET NO. 4
4 SHEETS



***Existing dowel rods are to be cut off and ground flush with cap.



DESIGNED	V.H.V.	DATE	May 3, 2005
CHECKED	A.T.H.	EXAMINED	John A. Morris ENGINEER OF STRUCTURAL SERVICES
DRAWN	Drew Christopher	PASSED	Ralph E. Anderson ENGINEER OF BRIDGES AND STRUCTURES
CHECKED	V.H.V. A.T.H.		

BEAM DETAILS
F.A.U. RT. 9877
DUPAGE COUNTY
SN 022-0084

