

ROUTE	SECTION	COUNTY	TOTAL SHEETS	SHEET NUMBER
FAI 94	2005-018 T	COOK	12	1

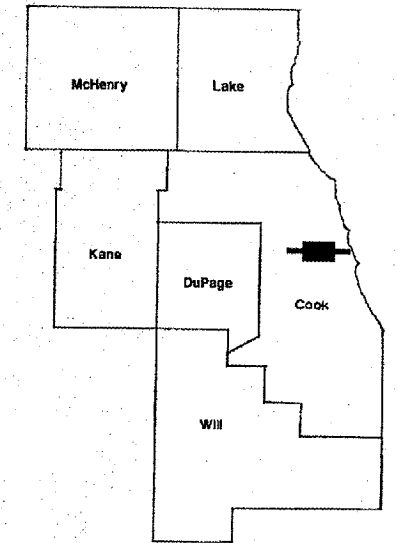
FOR INDEX OF SHEETS SEE SHEET 2

STATE OF ILLINOIS
DEPARTMENT OF TRANSPORTATION
DIVISION OF HIGHWAYS
REGION ONE
PROPOSED HIGHWAY PLANS

CONTRACT NO. 62942

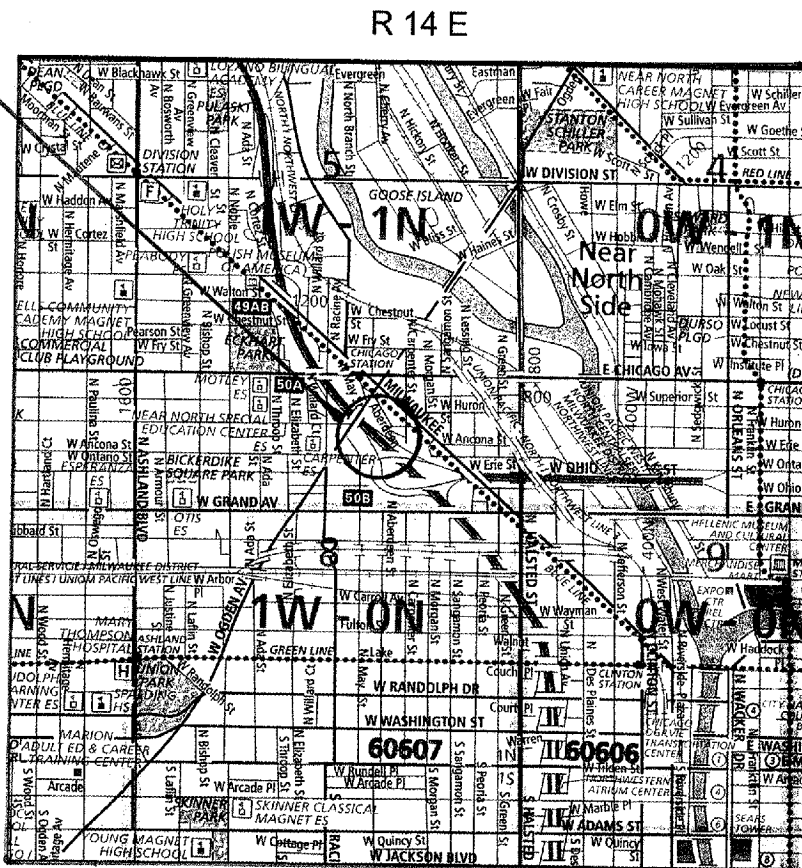
**IMPROVEMENT IS
 LOCATED IN THE CITY OF
 CHICAGO**

FAI 90/94 (KENNEDY EXPRESSWAY)
 AT OHIO STREET
 SECTION 2005-018 T
 STORM SEWER REPAIR
 COOK COUNTY
 C-91-181-05



LOCATION OF IMPROVEMENT INDICATED THUS:

**LOCATION OF
 IMPROVEMENT**



TRAFFIC DATA
 SPEED LIMIT = 55 MPH
 2003 ADT = 313,000

STATE OF ILLINOIS
DEPARTMENT OF TRANSPORTATION
DIVISION OF HIGHWAYS
 SUBMITTED: *Oct. 27* 20 *05*
Diane M. O'Keefe / *CO*
 DEPUTY DIRECTOR OF HIGHWAYS, REGION ENGINEER
December 9, 2005
Mike Hine / *RD*
 ENGINEER OF DESIGN AND ENVIRONMENT
December 9, 2005
Eric Harm / *RD*
 DEPUTY DIRECTOR, DIVISION OF HIGHWAYS

**PRINTED BY THE AUTHORITY
 OF THE STATE OF ILLINOIS**

C.U.A.N. (CHICAGO UTILITY ALERT
 NETWORK)
 INFORMATION FOR EXCAVATION
 (312) 744-7000

CONTRACT 62942

DISTRICT ONE BUREAU OF DESIGN
 DESIGN PREPARATION ENGINEER: KEN ENG / R. BORO (847) 705-4178

ROUTE	SECTION	COUNTY	TOTAL SHEETS	SHEET NUMBER
FAI 90/94	2005-018 T	COOK	12	2

CONTRACT 62942

GENERAL NOTES

1. THE CONTRACTOR SHALL COORDINATE CONSTRUCTION ACTIVITIES WITH UTILITY COMPANIES.
2. THE CONTRACTOR WILL NOT BE ALLOWED TO SET UP A YARD OR FIELD OFFICE ON STATE (or TOLLWAY) PROPERTY WITHOUT WRITTEN PERMISSION FROM THE DEPARTMENT (or ISTHA).
3. WHEN ARTIFICIAL LIGHTING IS UTILIZED IN NIGHT OPERATIONS, THE CONTRACTOR SHALL EXERCISE THE UTMOST PRECAUTIONS IN PREVENTING ADVERSE VISIBILITY TO THE MOTORING PUBLIC AND ADJOINING RESIDENTIAL AREAS. .
4. ANY PAVEMENT MARKINGS AND RAISED REFLECTIVE PAVEMENT MARKERS OBLITERATED BY CONSTRUCTION OPERATIONS ON SHALL BE REPLACED AND PAID FOR IN KIND.
5. IT SHALL BE THE CONTRACTOR'S RESPONSIBILITY TO VERIFY ALL DIMENSIONS AND CONDITIONS EXISTING IN THE FIELD PRIOR TO CONSTRUCTION AND ORDERING OF MATERIALS.
6. THE CONTRACTOR SHALL CONTACT THE DISTRICT ONE TRAFFIC CONTROL SUPERVISOR AT (847)705-4151 OR (847)705-4155 A MINIMUM OF 72 HOURS IN ADVANCE OF BEGINNING WORK.
7. DO NOT SCALE PLANS FOR CONSTRUCTION DIMENSIONS.

GENERAL NOTES (City of Chicago)

1. BEFORE STARTING ANY EXCAVATION, THE CONTRACTOR SHALL CALL "C.U.A.N." (CHICAGO UTILITY ALERT NETWORK) AT (312)744-7000 FOR FIELD LOCATIONS OF BURIED ELECTRIC, TELEPHONE AND GAS UTILITIES. (48 HOUR NOTIFICATION IS REQUIRED).
2. THE CONTRACTOR SHALL COORDINATE CONSTRUCTION ACTIVITIES WITH UTILITY COMPANIES AND THE CITY OF CHICAGO.

STATE STANDARDS

- 701400-02 APPROACH TO LANE CLOSURE, FREEWAY/EXPRESSWAY
701401-03 LANE CLOSURE, FREEWAY/EXPRESSWAY
701411-03 LANE CLOSURE, MULTILANE AT ENTRANCE OR EXIT RAMPS
701446 TWO LANE CLOSURE, FREEWAY/EXPRESSWAY
702001-05 TRAFFIC CONTROL DEVICES

INDEX OF SHEETS

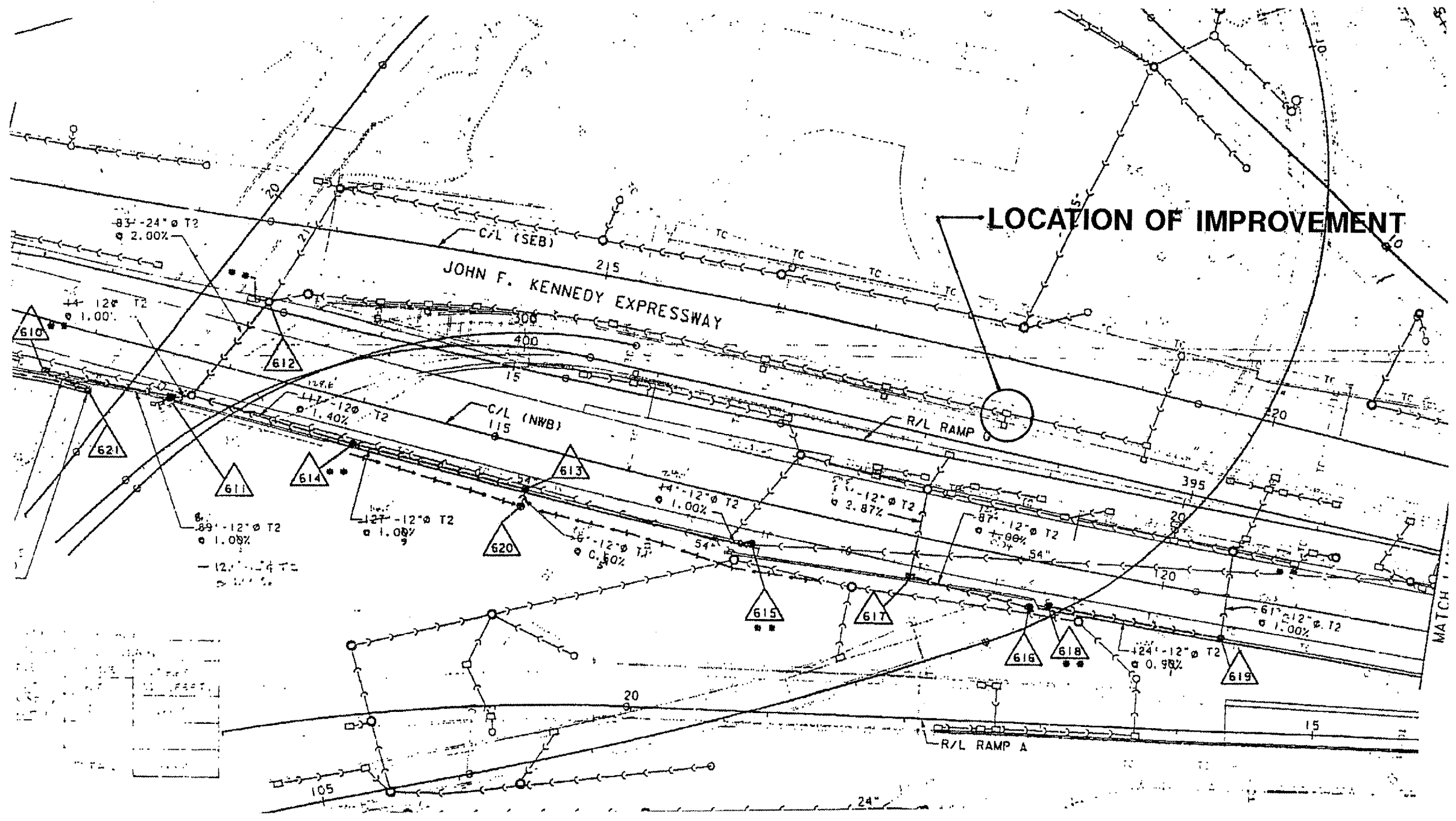
- 1 TITLE SHEET
2 INDEX OF SHEETS
STATE STANDARDS
PLAN NOTES
3 LOCATION MAP
4 SUMMARY OF QUANTITIES
5 TYPICAL SECTION
6 EXIST. PLAN SHEET
7 PROP. PLAN SHEET
8-11 INJECTION PATTERN SHEETS
12 TRAFFIC CONTROL FOR SHOULDER AND PARTIAL RAMP CLOSURES

ILLINOIS DEPARTMENT OF TRANSPORTATION

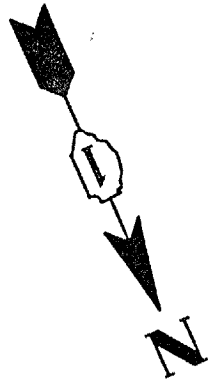
INDEX OF SHEETS STATE STANDARDS PLAN NOTES

ROUTE	SECTION	COUNTY	TOTAL SHEETS	SHEET NUMBER
FAI 90/94	2005-018 T	COOK	12	3

CONTRACT 62942



LOCATION OF IMPROVEMENT



ILLINOIS DEPARTMENT OF TRANSPORTATION

LOCATION MAP

ROUTE	SECTION	COUNTY	TOTAL SHEETS	SHEET NUMBER
FAI 90/94	2005-018 T	COOK	12	4

CONTRACT 62942

SUMMARY OF QUANTITIES

URBAN
100% STATE
Y007

Pay Item	Description	Unit	Total
50102400	CONCRETE REMOVAL	CU YD	0.70
55039700	STORM SEWERS TO BE CLEANED	FOOT	30.00
58600100	SAND BACKFILL	CU YD	5.50
60618300	CONCRETE MEDIAN SURFACE, 4 INCH	SQ FT	75.00
X0325207	TELEVISION INSPECTION OF SEWER	FOOT	20.00
X0329857	POLYURETHANE MATERIAL	POUND	1200.00
X7011015	TRAFFIC CONTROL AND PROTECTION (EXPRESSWAYS)	L SUM	1.00
Z0018500	DRAINAGE STRUCTURES TO BE CLEANED	EACH	1.00
67100100	MOBILIZATION	L SUM	1.00

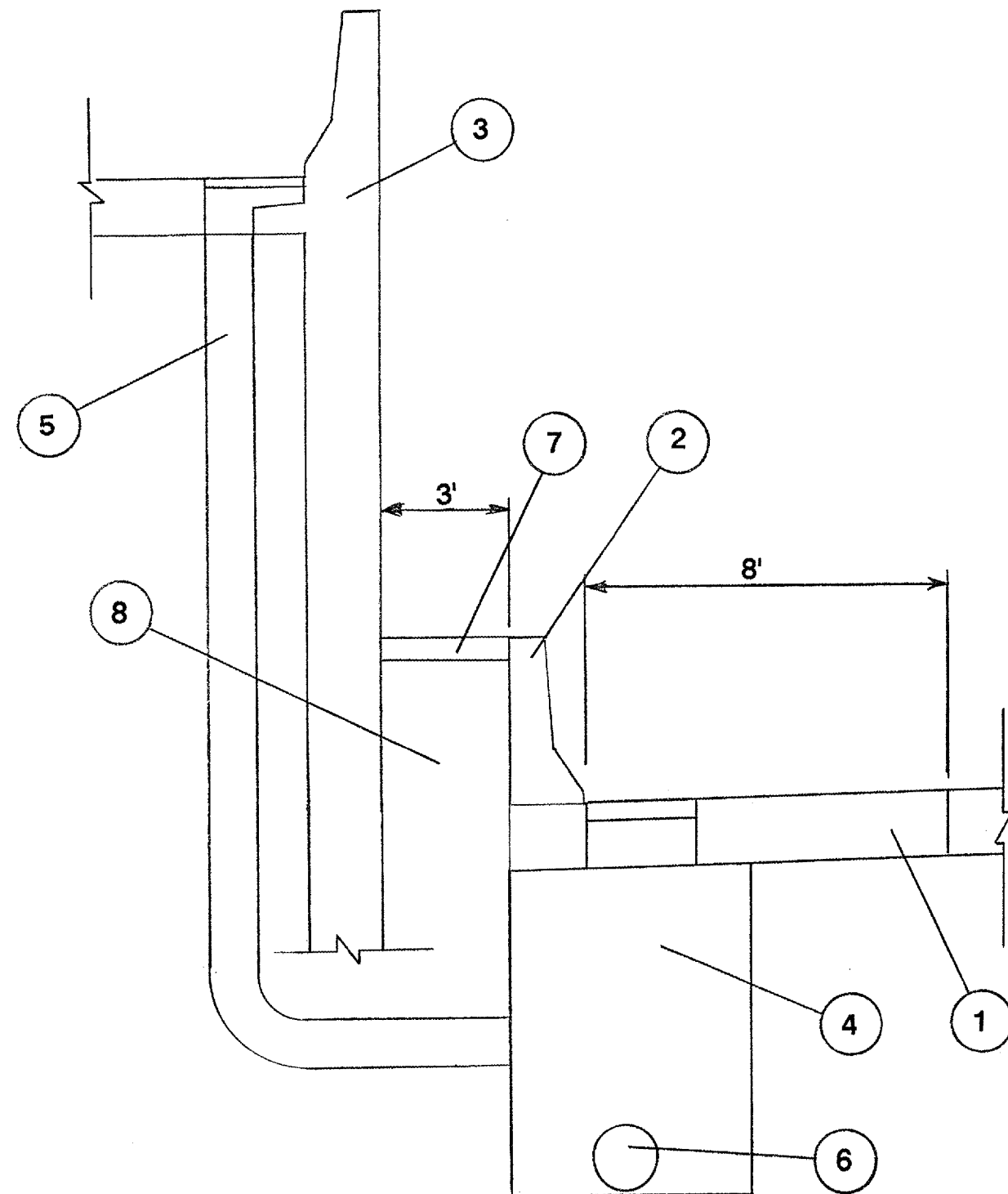
ILLINOIS DEPARTMENT OF TRANSPORTATION

SUMMARY OF QUANTITIES

Rev.

ROUTE	SECTION	COUNTY	TOTAL SHEETS	SHEET NUMBER
FAI 90/94	2005-018 T	COOK	12	5

CONTRACT 62942



LEGEND

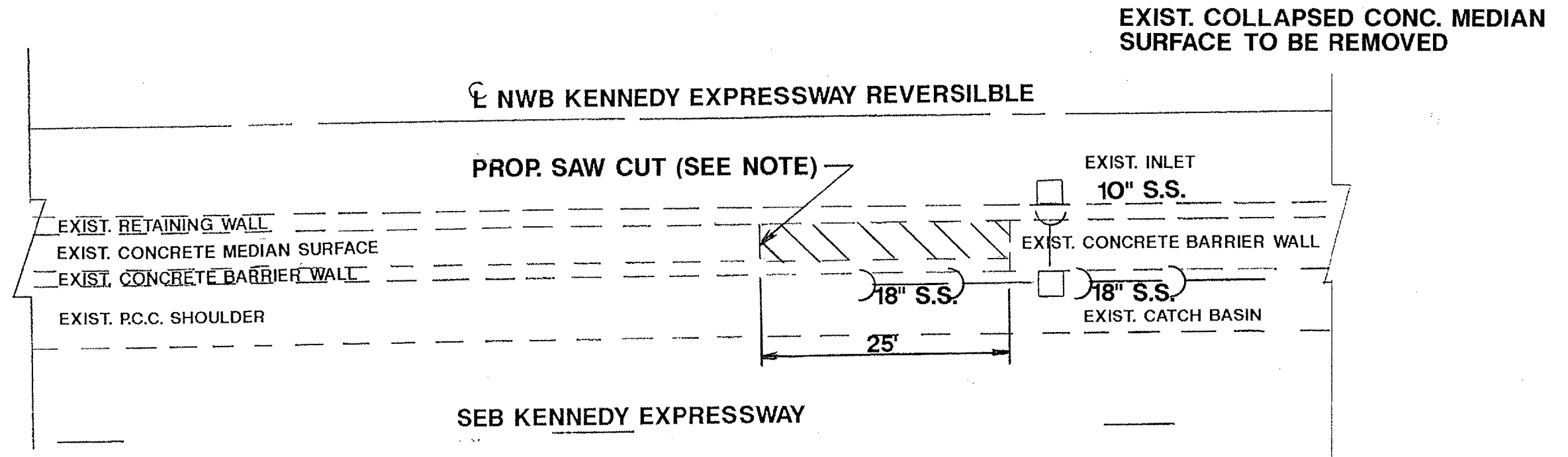
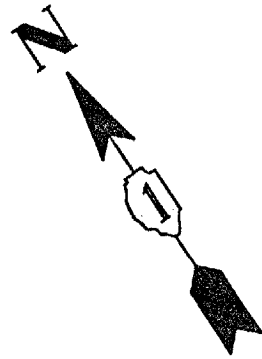
1. EXIST. P.C.C. SHOULDER
2. EXIST. CONCRETE BARRIER WALL
3. EXIST. RETAINING WALL
4. EXIST. 3'x4' CATCH BASIN (TO BE SEALED)
5. EXIST. R.T.R. PIPE, 10" (TO BE SEALED/REPAIRED)
6. EXIST 18" STORM SEWER
7. EXIST. / PROP. CONCRETE MEDIAN SURFACE, 4"
8. EXIST. / PROP. SAND BACKFILL

ILLINOIS DEPARTMENT OF TRANSPORTATION

TYPICAL SECTION

ROUTE	SECTION	COUNTY	TOTAL SHEETS	SHEET NUMBER
FAI 90/94	2005-018 T	COOK	12	6

CONTRACT 62942



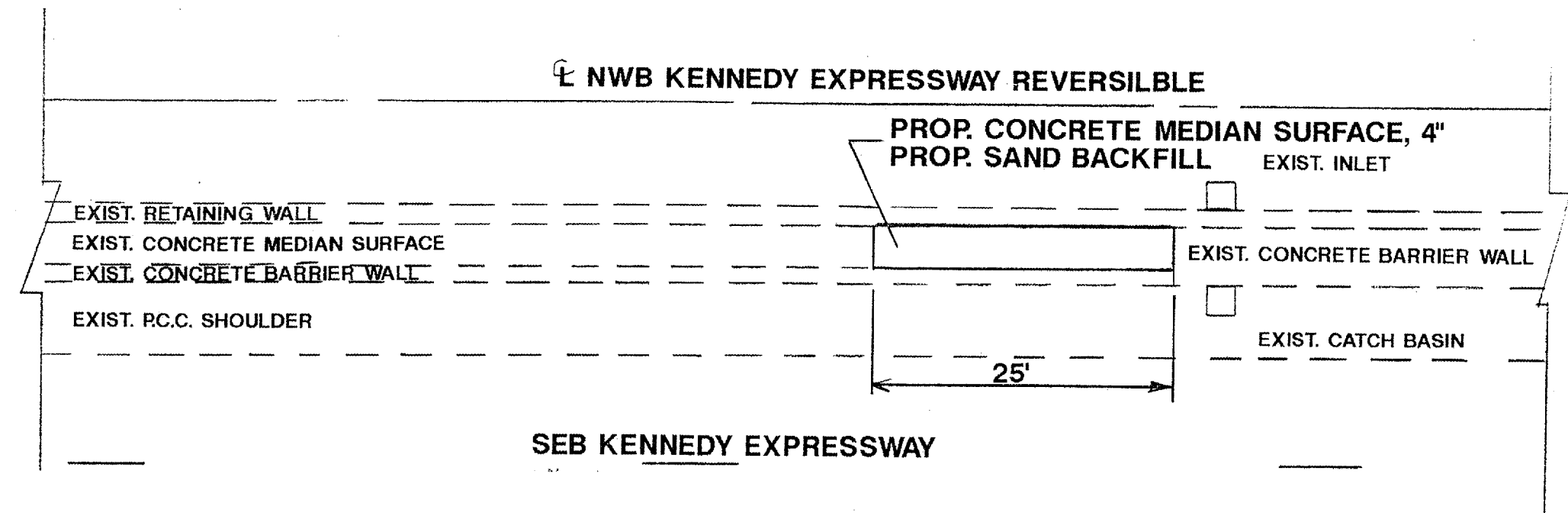
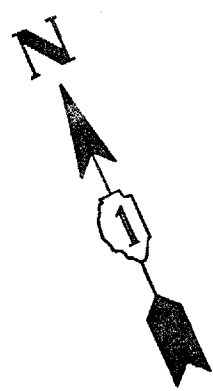
NOTE:
INCLUDED IN THE COST OF CONCRETE REMOVAL

ILLINOIS DEPARTMENT OF TRANSPORTATION

EXIST. PLAN SHEET

ROUTE	SECTION	COUNTY	TOTAL SHEETS	SHEET NUMBER
FAI 90/94	2005-018 T	COOK	12	7

CONTRACT 62942

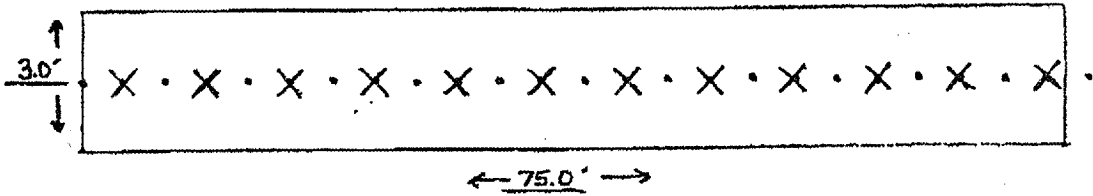


ILLINOIS DEPARTMENT OF TRANSPORTATION

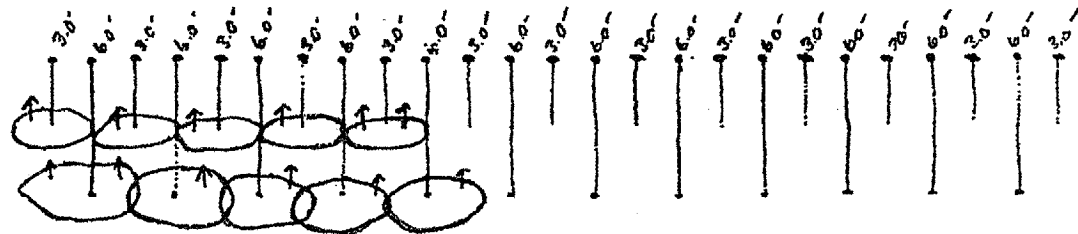
PROP. PLAN SHEET

ROUTE	SECTION	COUNTY	TOTAL SHEETS	SHEET NUMBER
FAI 90/94	2005-018 T	COOK	12	8

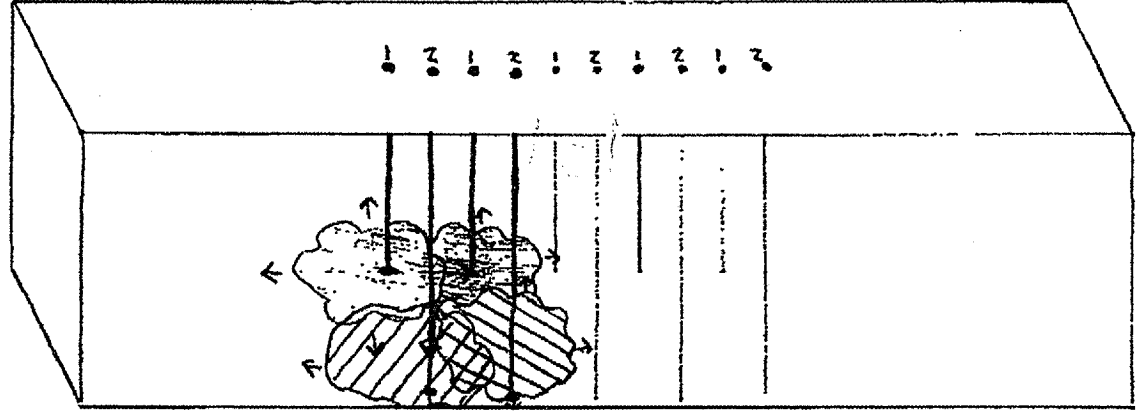
CONTRACT 62942



TOP VIEW



1 = 3.0'
2 = 6.0'



SIDE VIEW

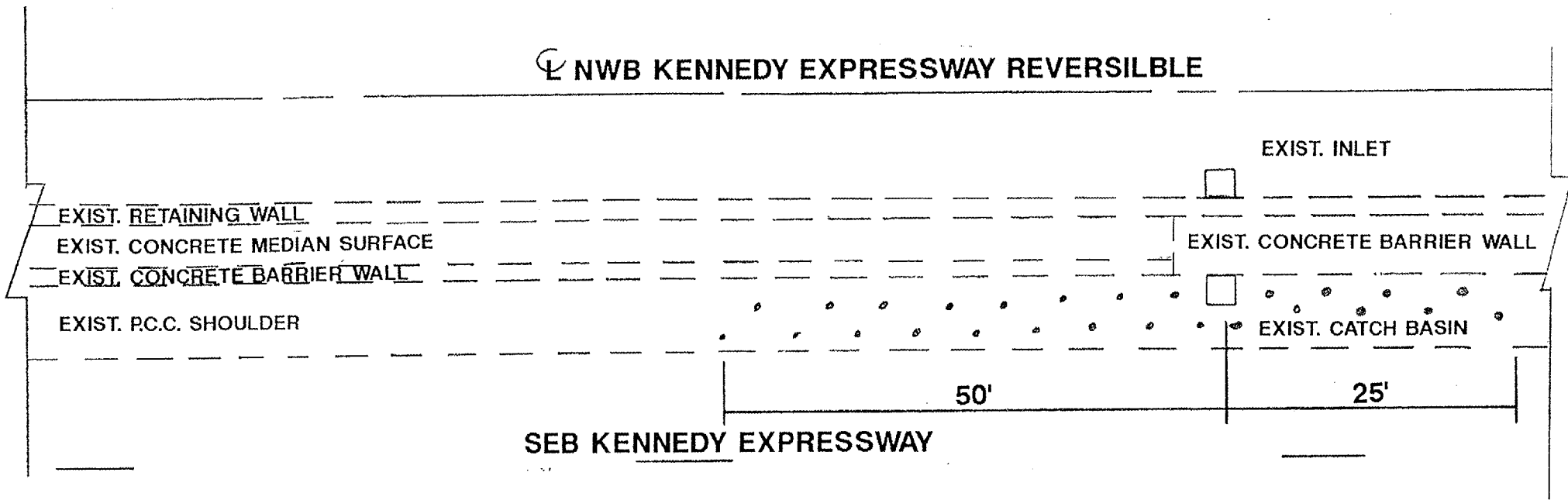
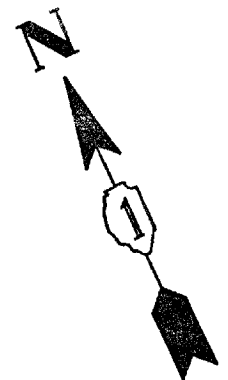
NOTES:

1. INJECTION POINTS SHALL BE SPACED EVERY 3', ALTERNATING BETWEEN 3' AND 6' DEEP.
2. ALL 3' INJECTIONS SHALL BE COMPLETED FIRST THEN COME BACK AND DO ALL 6' INJECTIONS.

ILLINOIS DEPARTMENT OF TRANSPORTATION
**INJECTION PATTERN FOR
CONCRETE MEDIAN
SURFACE**

ROUTE	SECTION	COUNTY	TOTAL SHEETS	SHEET NUMBER
FAI 90/94	2005-018 T	COOK	12	9

CONTRACT 62942



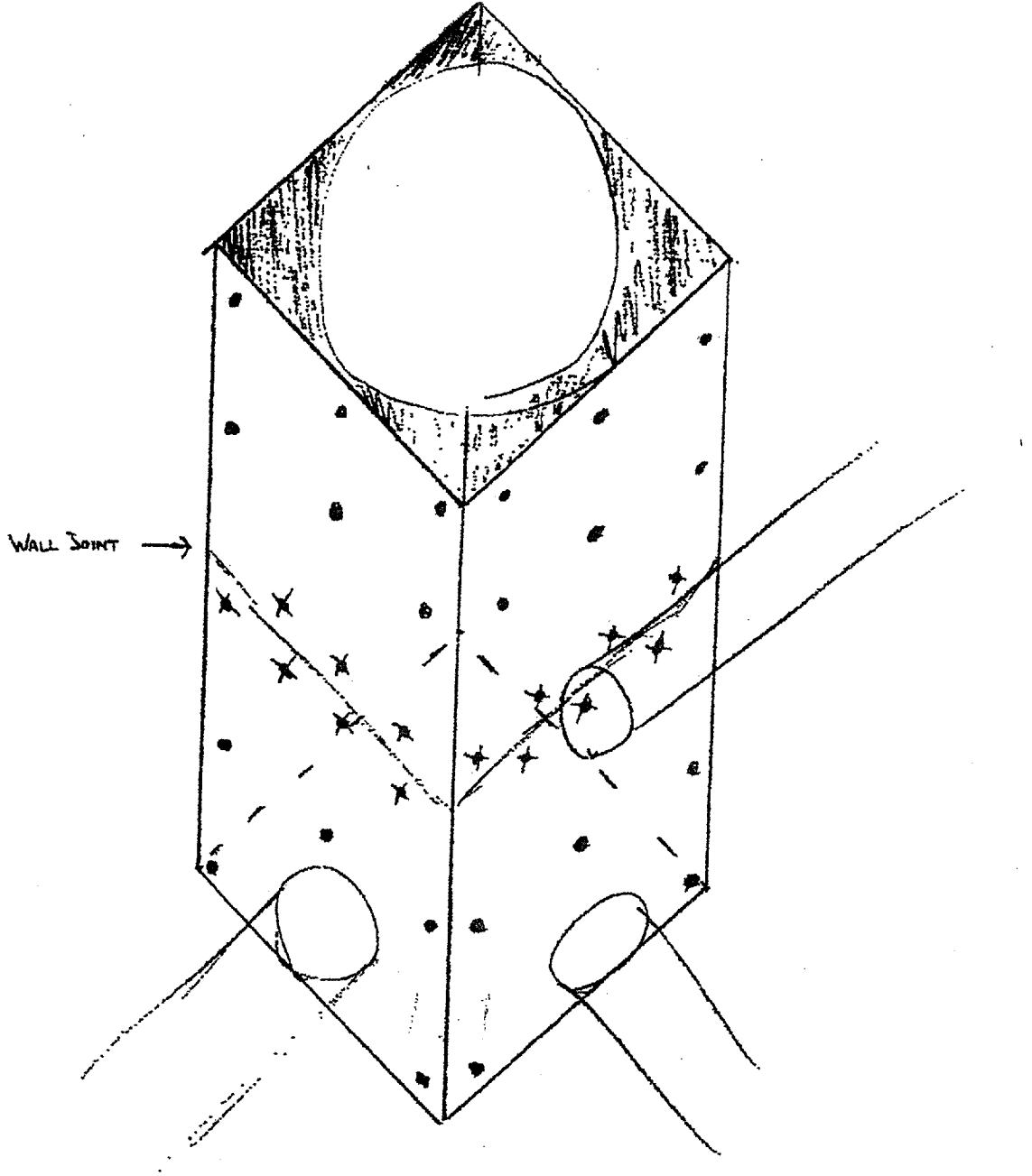
NOTE:
ONE INJECTION EVERY 3'

ILLINOIS DEPARTMENT OF TRANSPORTATION

**INJECTION PATTERN
FOR P.C.C. SHOULDER**

ROUTE	SECTION	COUNTY	TOTAL SHEETS	SHEET NUMBER
FAI 90/94	2005-018 T	COOK	12	10

CONTRACT 62942

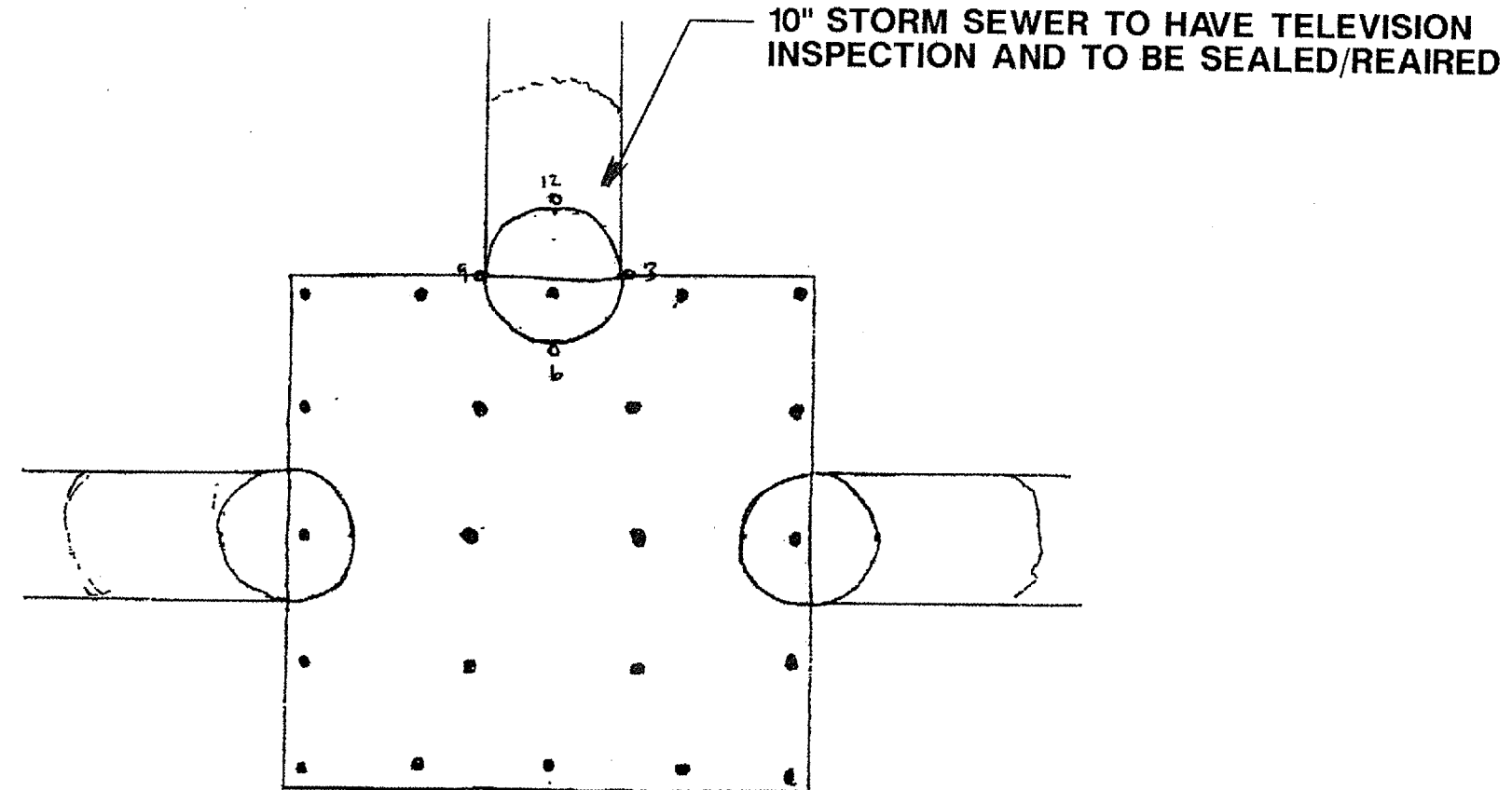


INJECTION PATTERN FOR CATCH BASIN

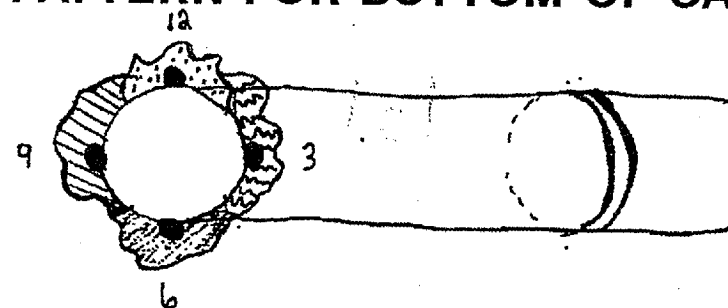
ILLINOIS DEPARTMENT OF TRANSPORTATION
**INJECTION PATTERN
FOR CATCH BASIN**

ROUTE	SECTION	COUNTY	TOTAL SHEETS	SHEET NUMBER
FAI 90/94	2005-018 T	COOK	12	11

CONTRACT 62942



INJECTION PATTERN FOR BOTTOM OF CATCH BASIN



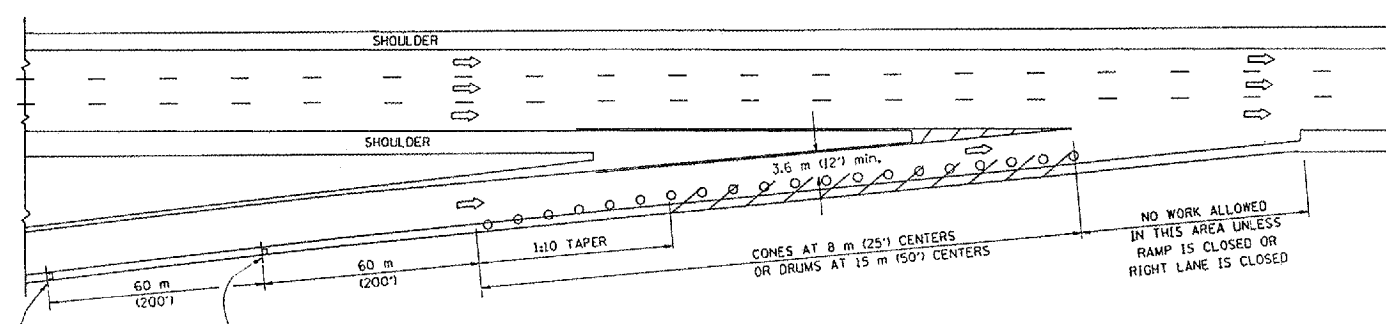
INJECTION PATTERN FOR 10" S.S. TO BE SEALED

ILLINOIS DEPARTMENT OF TRANSPORTATION
**10" STORM SEWER AND
 BOTTOM OF CATCH BASIN
 INJECTION PATTERN**

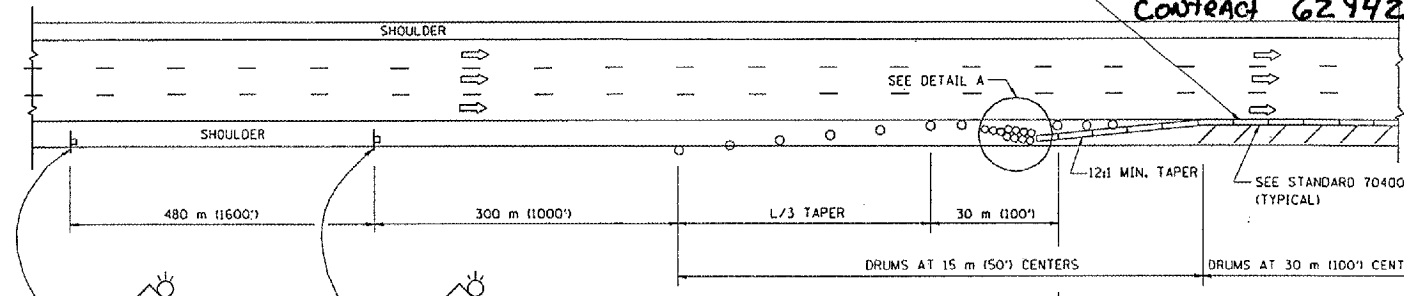
PARTIAL RAMP CLOSURE DETAILS

SHOULDER CLOSURE DETAILS

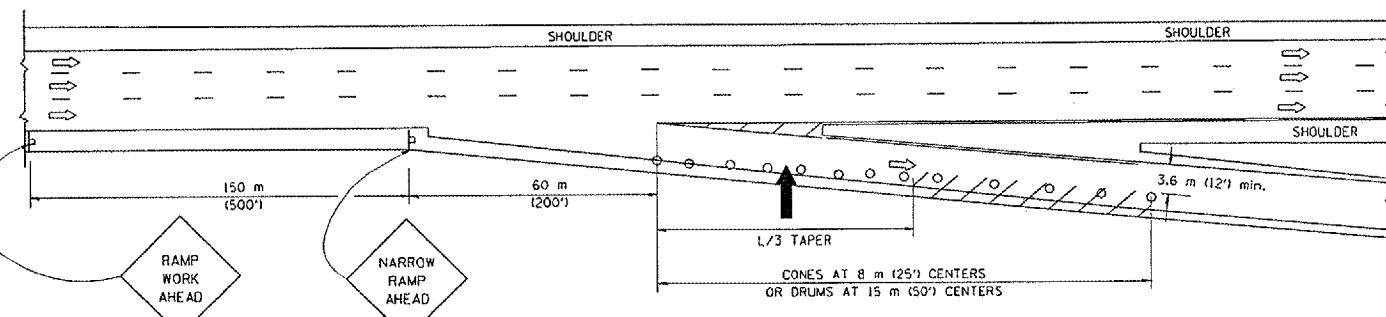
F.A. RTE.	SECTION	COUNTY	TOTAL SHEETS	SHEET NO.
90A	2005-061	COOK	12	12
STA.	TO STA.			
FED. ROAD DIST. NO. ILLINOIS FED. AID PROJECT				
Contract 62942				



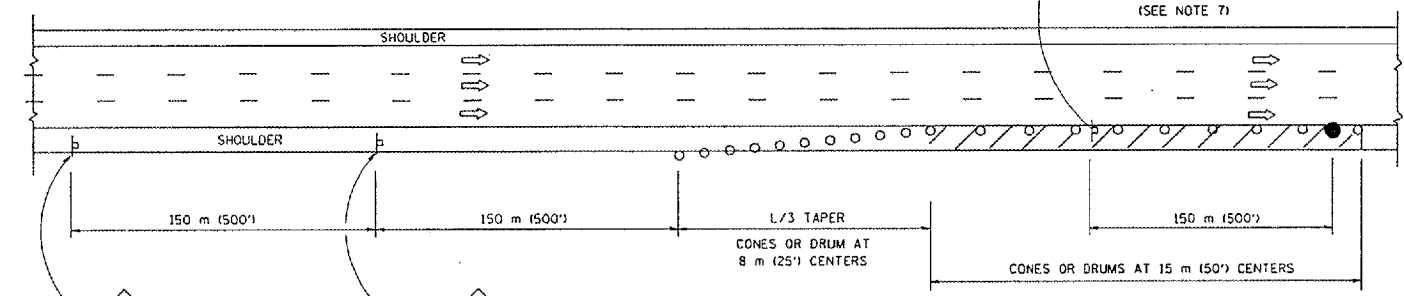
TYPICAL ENTRANCE RAMP



PERMANENT SHOULDER CLOSURE



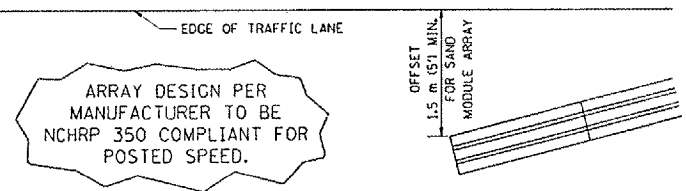
TYPICAL EXIT RAMP



DAYTIME SHOULDER CLOSURE

THIS DETAIL IS USED WHERE:

- VEHICLES, EQUIPMENT, WORKERS OR THEIR ACTIVITIES ENCRUSH IN AN AREA CLOSER THAN 4.5 m (15') TO THE EDGE OF PAVEMENT FOR A PERIOD IN EXCESS OF 15 MINUTES.



DETAIL "A"
IMPACT ATTENUATOR, TEMPORARY
(SEE NOTE 5)

SYMBOLS

- ARROWBOARD
- WORK AREA
- SIGN ON PORTABLE OR PERMANENT SUPPORT
- FLAGGER WITH CONTROL SIGN
- DRUM WITH MONO-DIRECTIONAL STEADY BURNING LIGHT
- CONES - 700 (28) IN HEIGHT

GENERAL NOTES

- THE "L" DISTANCE EQUALS:

SPEED LIMIT	FORMULAS
80 km/h (45 mph) OR GREATER:	METRIC: $L=0.65(W/S)$ ENGLISH: $L=(W/S)$
	W = WIDTH OF OFFSET IN METERS (FEET)
	S = NORMAL POSTED SPEED KM/H (MPH)
- PLASTIC DRUMS WITH HIGH PERFORMANCE REFLECTIVE SHEETING AND STEADY BURNING LIGHTS ARE REQUIRED FOR ALL NIGHTTIME CLOSURES.
- ALL SIGNS SHALL BE POST MOUNTED IF THE CLOSURE TIME EXCEEDS FOUR DAYS.
- FLASHING LIGHTS SHALL BE USED DURING THE HOURS OF DARKNESS AND SHALL BE INSTALLED ABOVE THE FIRST TWO SETS OF SIGNS.

- THE IMPACT ATTENUATOR, TEMPORARY IS NOT REQUIRED WHEN THE TEMPORARY CONCRETE BARRIER WALL IS OUTSIDE THE CLEAR ZONE OR IS TIED INTO THE EXISTING GUARDRAIL. IF OFFSET IS LESS THAN 5 FEET USE "TRAFFIC BARRIER TERMINAL, TYPE III, TEMPORARY" DEVICE TO MEET NCHRP350 FOR POSTED SPEED.
- AUTHORIZATION FROM THE DISTRICT'S BUREAU OF TRAFFIC IS REQUIRED FOR ALL FREEWAY CLOSURES.
- THE FLAGGER AND FLAGGER SIGN ARE REQUIRED AT THE ABOVE WORK SITES WHEN:
 - FOUR OR MORE WORK VEHICLES ENTER THE TRAFFIC LANES IN A ONE HOUR PERIOD.
 - THE WORK ACTIVITY REQUIRES FREQUENT ENCRUSHMENT INTO THE LANE OPEN TO TRAFFIC.
 THE FLAGGER SHALL BE STATIONED APPROXIMATELY 30 m (100') TO 60 m (200') IN ADVANCE OF THE WORKERS.

ALL DIMENSIONS ARE IN MILLIMETERS (INCHES) UNLESS OTHERWISE SHOWN.

TRAFFIC CONTROL DETAILS FOR FREEWAY SHOULDER CLOSURES PARTIAL RAMP CLOSURES

REVISIONS	
NAME	DATE
DWS	11/96
JAF	12/02
NCHRP 350	04/03

SCALE: NONE
DATE: 05/06/2003
DRAWN BY: DWS
DESIGNED BY: DWS
CHECKED BY:
TC-17