

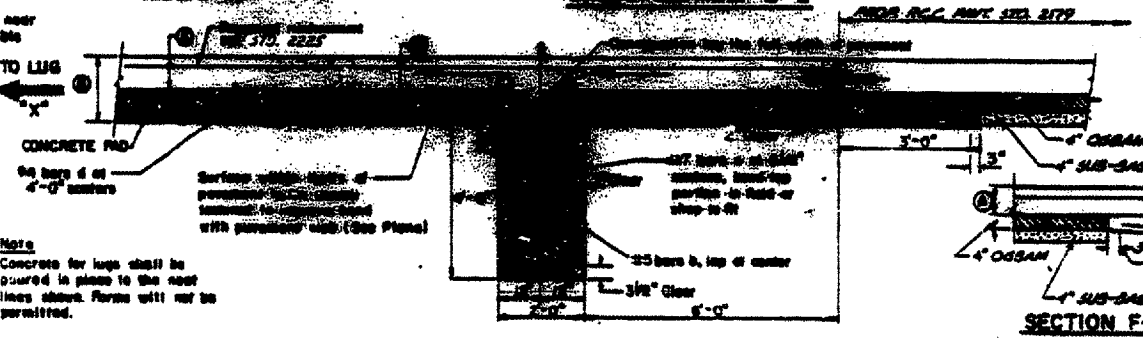
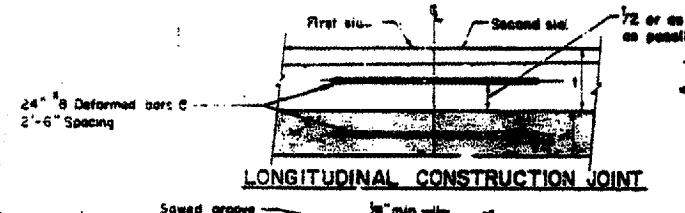
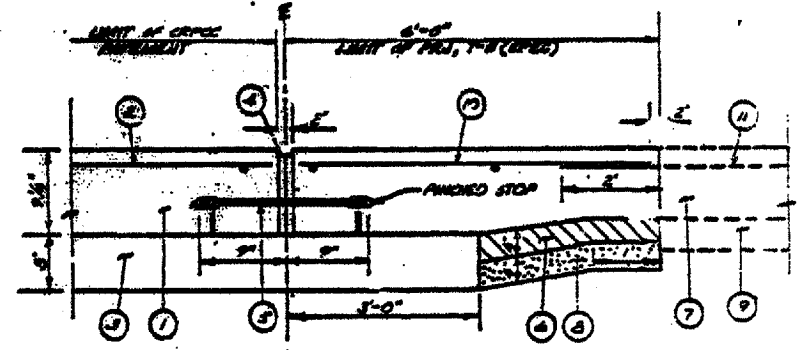
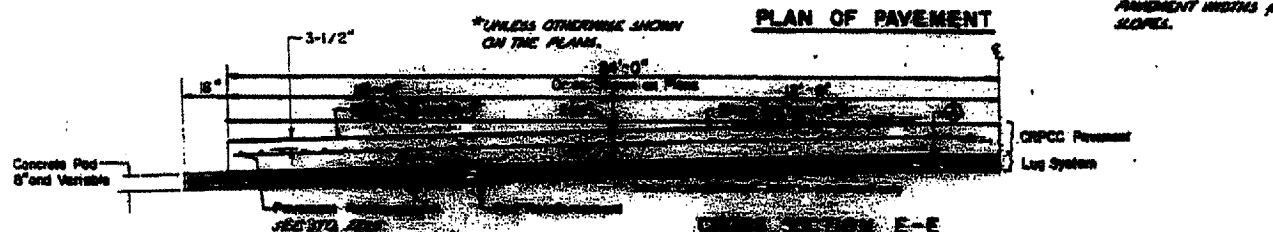
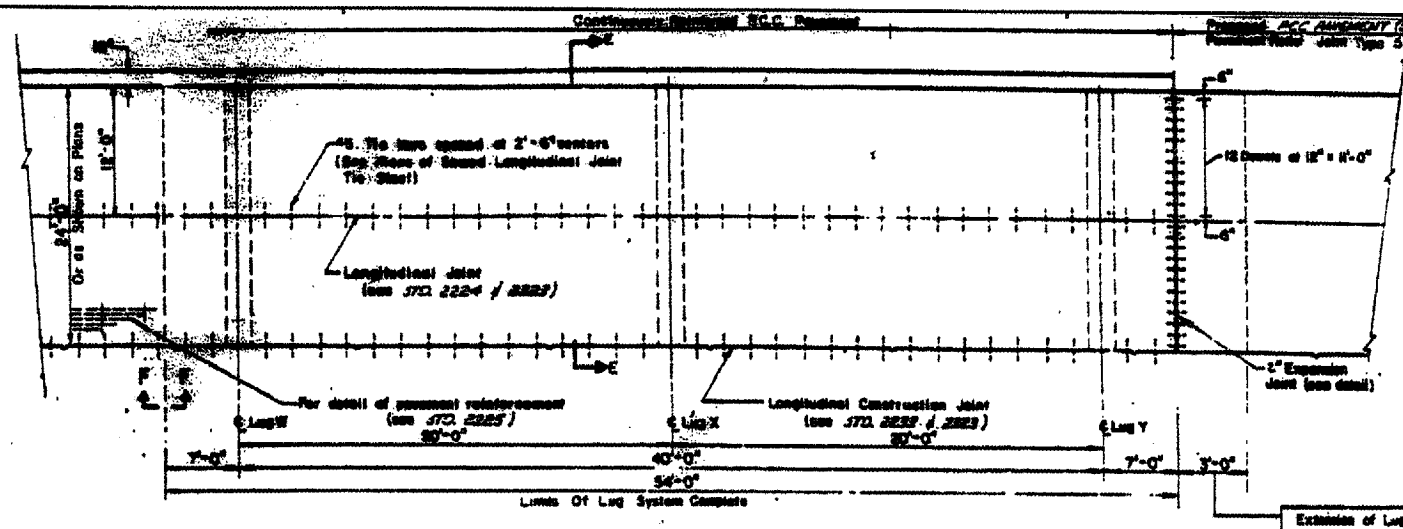
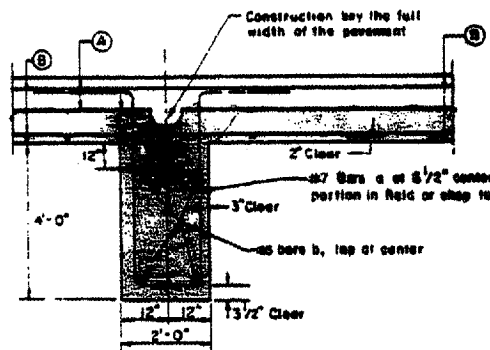
TOTAL SHEETS	SHEET NUMBER
16	11

62962

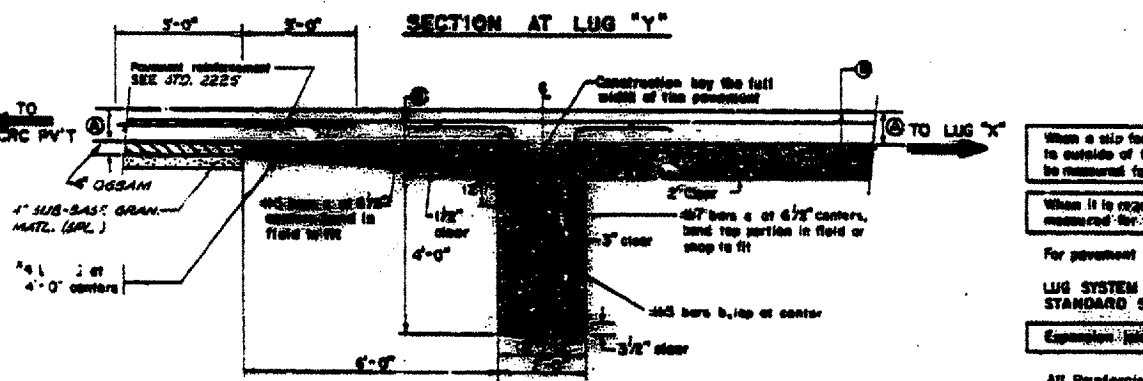
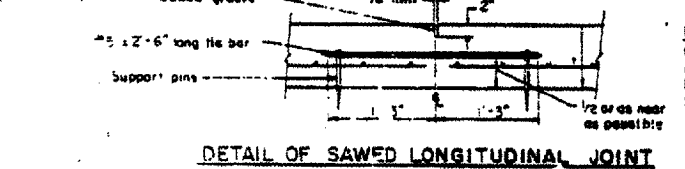
**LOCATION OF LUG SYSTEMS COMPLETE**

LOCATION	REINFORCEMENT WIDTH
STA. 463+00 TO 463+54 LT	36'
STA. 463+00 TO 463+54 RT	36'
STA. 491+00 TO 491+62 RT	24'
STA. 503+71.93 TO 504+82.93 LT	24'

\* MEET TESTING OR REINFORCEMENT. USE REINFORCEMENT RELIEF JOINT TYPE 5. (SPECIAL).



- PAVEMENT RELIEF JOINT, TYPE 5 (SPECIAL)**
- |  |                                      |
|--|--------------------------------------|
| 1 PROPOSED CRCP CONCRETE PAVEMENT                | 6 PROPOSED GRANULAR                  |
| 2 PROPOSED ANCHORAGE REINFORCEMENT PER STD. 2225 | 7 EXISTING CRCP REINFORCEMENT        |
| 3 LUG SYSTEM COMPLETE                            | 8 PROPOSED 4\"/>                     |
| 4 PROPOSED PROPOSED EXPANSION JOINT              | 9 EXISTING STABILIZED SUB-BASE 4\"/> |
| 5 PROPOSED 1/2\"/>                               |                                      |
| <b>GENERAL NOTES</b>                             |                                      |
| 11 EXIST. CRCP ANCHORAGE REINFORCEMENT           |                                      |



When a slip form paver is used, the OCSA shall be constructed to a width 6 inches wider than the width from outside to outside of the slip form pavers tracks. When this results in a width greater than shown on the plans, such extended width will not be measured for payment, but shall be considered incidental to CRCP GRADED BITUMINOUS AGGREGATE MIXTURE.

When it is required that the concrete pad be extended beyond the width shown in SECTION E-E, such extended width will not be measured for payment, but shall be considered incidental to LUG SYSTEM COMPLETE.

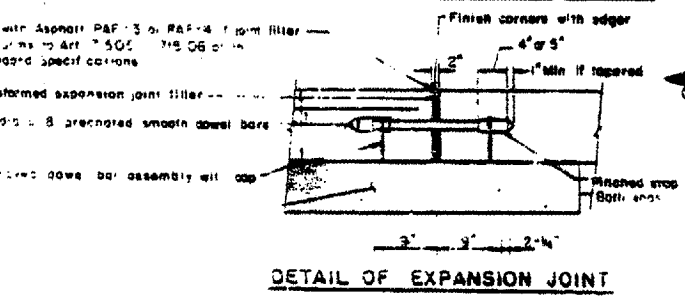
For pavement reinforcement see STANDARD 2225.

LUG SYSTEM COMPLETE shall be performed in accordance with applicable portions of Section 409 of the STANDARD SPECIFICATIONS. The RCC Pavement over the lugs will be paid for as C.R.C. Pavement 7.4.

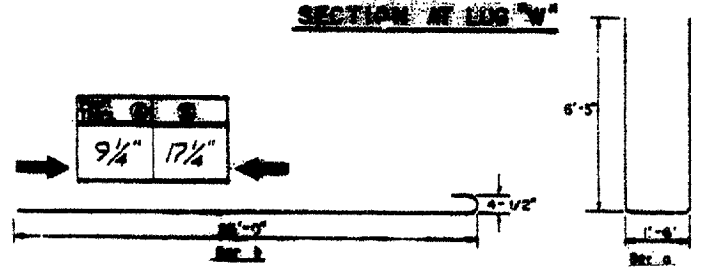
Expansion joint shall be considered incidental to the cost of C.R.C. Pavement.

All Reinforcing Steel shall be epoxy coated. Detail Bar Assembly shall be epoxy or plastic coated.

In locations where the Proposed C.R.C. Pavement meets existing Pavement, the construction of a Pavement Relief Joint shall be required as detailed in the Plans.



INFORMATION ONLY



ILLINOIS DEPARTMENT OF TRANSPORTATION

IL ROUTE 53 EXTENSION  
PAVEMENT RELIEF JOINT  
(INFORMATION ONLY)