

64577

F.A.P. RTE.	SECTION	COUNTY	TOTAL SHEETS	SHEET NO.
301		STEPHENSON	292	1
FED. ROAD DIST. NO. 2 ILLINOIS FED. AID PROJECT				
• 177-13, 4, 4-1-1				

STATE OF ILLINOIS
DEPARTMENT OF TRANSPORTATION
DIVISION OF HIGHWAYS

PLANS FOR PROPOSED

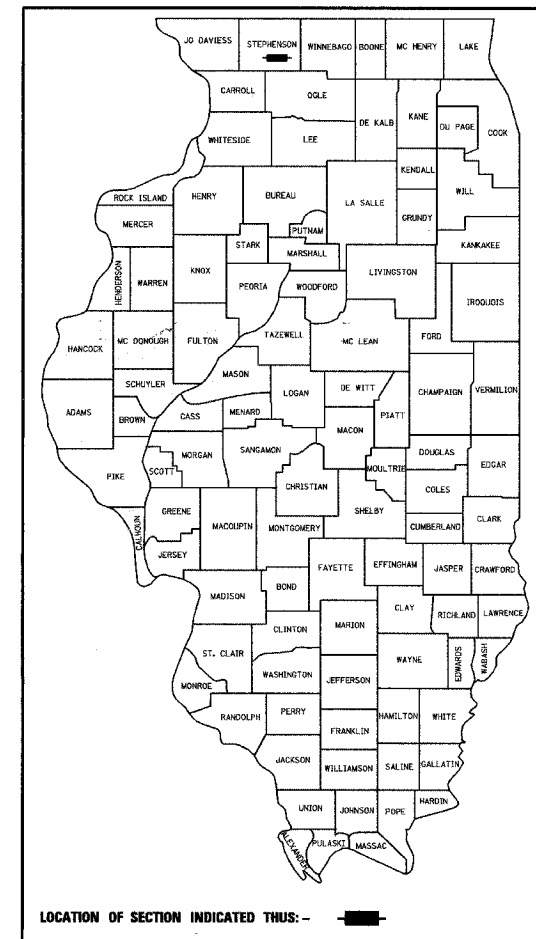
F.A.P. ROUTE 301 (US RTE. 20)
SECTION 177 - (3,4,4-1)-1
PROJECT NO. NHF - 301 (034)
STEPHENSON COUNTY
C-92-012-03

FOR INDEX OF SHEETS SEE SHEET NO. 2

IDOT LIASON ENGINEER: SAM ABDULLAH (815) 284-5935
IDOT PROJECT ENGINEER: ROBERT WAGNER (815) 284-5358

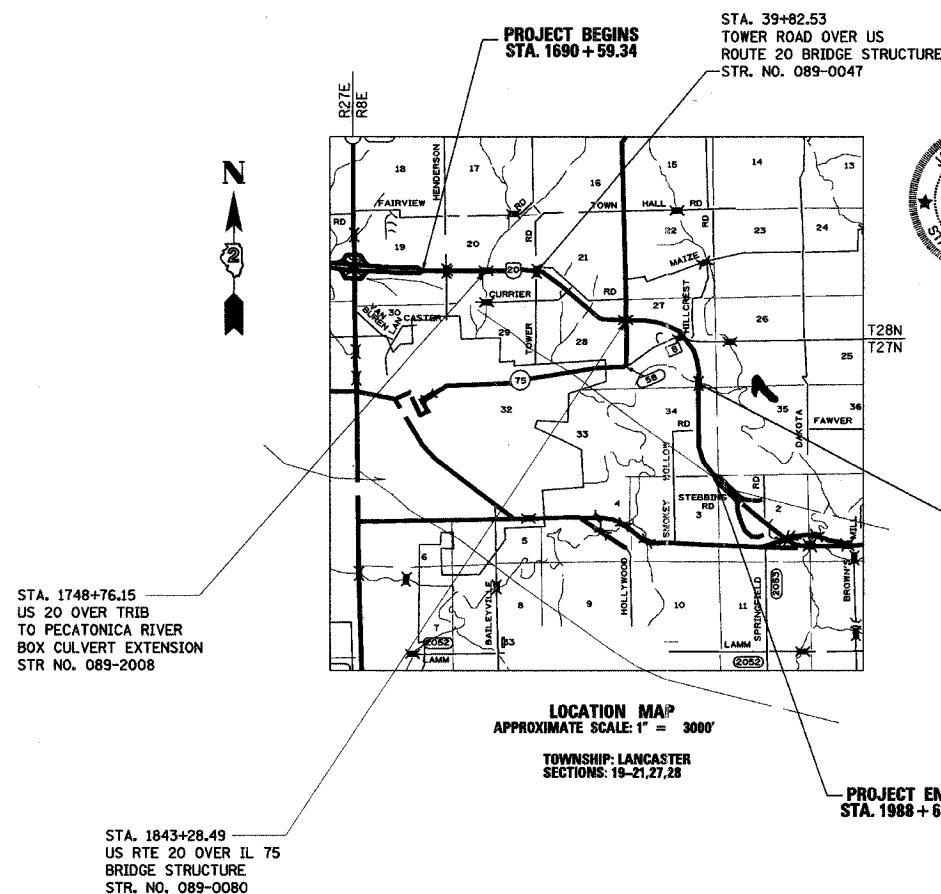
CONSULTANT: HDR, INC. (773) 380-7900
CONSULTANT: V3 COMPANIES OF ILLINOIS, LTD. (630) 724-9200

D-92-102-00



LOCATION OF SECTION INDICATED THUS: -

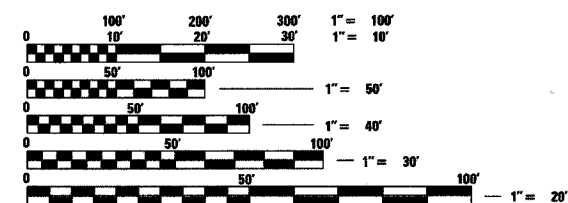
DESIGN DESIGNATION
US ROUTE 20: 1070(24) OPA
ILLINOIS RTE 75: 440 (24) MIN. ARTERIAL
SPRINGFIELD RD: LOCAL ROAD



Jeffrey A. Menard 10/27/05
DATE
JEFFREY A. MENARD
IL REGISTRATION 062-054021
V3 COMPANIES OF ILLINOIS, LTD.
TEL 630-724-9270
PLAN SHEETS: 1-5, 10-12, 15-17, 24-41, 43, 68-73, 86, 98-99, 108, 128-142, 225-247



Jay Chiglo 10/19/2005
DATE
JAY CHIGLO
IL REGISTRATION 062-054360
HDR ENGINEERING, INC.
TEL 773-380-7900
PLAN SHEETS: 6-8, 13-14, 16-23, 44-47, 74-85, 89-97, 100-107, 109-127, 143-225, 249-299



FULL SIZE PLANS HAVE BEEN PREPARED USING STANDARD ENGINEERING SCALES, REDUCED SIZED PLANS WILL NOT CONFORM TO STANDARD SCALES, IN MAKING MEASUREMENTS ON REDUCED PLANS, THE ABOVE SCALES MAY BE USED.

J.U.L.I.E.
JOINT UTILITY LOCATION INFORMATION FOR EXCAVATION
1-800-892-0123

CONTRACT NO. 64577

GROSS AND NET LENGTH OF PROJECT = 21441 FT = 4.06 MI (US ROUTE 20) HDR SECTION
GROSS AND NET LENGTH OF PROJECT = 3288 FT = 0.62 MI (IL ROUTE 75) HDR SECTION
GROSS AND NET LENGTH OF PROJECT = 8361 FT = 1.58 MI (US ROUTE 20) V3 SECTION

TOTAL GROSS AND NET LENGTH OF PROJECT = 33,090 FT = 6.27 MI



V3 Companies
7325 Jones Avenue
Woodridge, IL 60517
630.724.9200 phone
630.724.9202 fax
www.v3coo.com

Visio, Virtute, Virtute... "The Vision To Transform with Excellence"



HDR Engineering, Inc.

PRINTED BY THE AUTHORITY
OF THE STATE OF ILLINOIS

DISTRICT 2
DIXON, IL

STATE OF ILLINOIS
DEPARTMENT OF TRANSPORTATION
DIVISION OF HIGHWAYS

SUBMITTED October 27 2005
Gregory L. Monte
DEPUTY DIRECTOR OF HIGHWAYS, REGION TWO ENGINEER
2005

ENGINEER OF PROJECT DEVELOPMENT AND IMPLEMENTATION
December 9, 2005
Mike Stone
ENGINEER OF DESIGN AND ENVIRONMENT

December 9, 2005
Eric Horn
DEPUTY DIRECTOR, DIVISION OF HIGHWAYS, CHIEF ENGINEER